

# V&V Reference Report

## L2 ASCDS Version : 10.2.1

Observation 52905 - L2 Version 1  
Chandra X-Ray Center

L2 Processing Date : Mar 24 2014

## Contents

<b>1</b>	<b>Front</b>	<b>2</b>
<b>2</b>	<b>OBI</b>	<b>3</b>
2.1	OBI . . . . .	3
2.1.1	Images . . . . .	3
2.1.2	Bias . . . . .	3
2.1.3	Parameters . . . . .	4
2.1.4	Events . . . . .	4
2.2	Compared Parameters . . . . .	5
2.3	Star Slots . . . . .	6
2.4	FID Slots . . . . .	6
<b>A</b>	<b>Summary</b>	<b>7</b>
A.1	Status . . . . .	7
A.2	Comments . . . . .	7

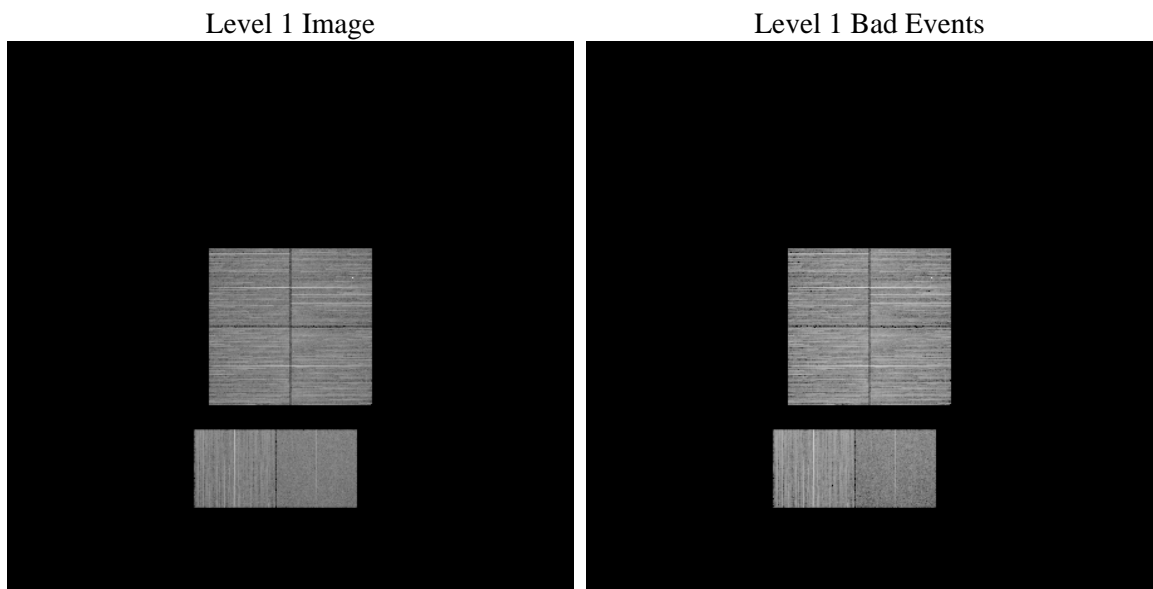
# 1 Front

seq_num	&#160	Sequence number
obs_id	52905	Observation id
title	ACIS-012367 diagnostics	Proposal title
observer	CHANDRA engineering request/realtime commanding	Principal investig
object	&#160	Source name
dtcycle	0	&#160
cycle	P	events from which exps? Prim/Second/Both
ra_targ	0.0	Observer's specified target RA [deg]
dec_targ	0.0	Observer's specified target Dec [deg]
ra_nom	148.02411791905	Nominal RA [deg]
dec_nom	-0.019889491817124	Nominal Dec [deg]
roll_nom	267.9334411448	Nominal Roll [deg]
revision	1	Processing version of data
ontime	8291.0330875516	Sum of GTIs [s]
livetime	8186.0470343362	Livetime [s]
ontime0	8290.9920475483	Sum of GTIs [s]
ontime1	8290.951007545	Sum of GTIs [s]
ontime2	8290.9099675417	Sum of GTIs [s]
ontime3	8291.0741275549	Sum of GTIs [s]
ontime6	8290.8689275384	Sum of GTIs [s]
ontime7	8291.0330875516	Sum of GTIs [s]
l2events	176344	Number of level 2 events

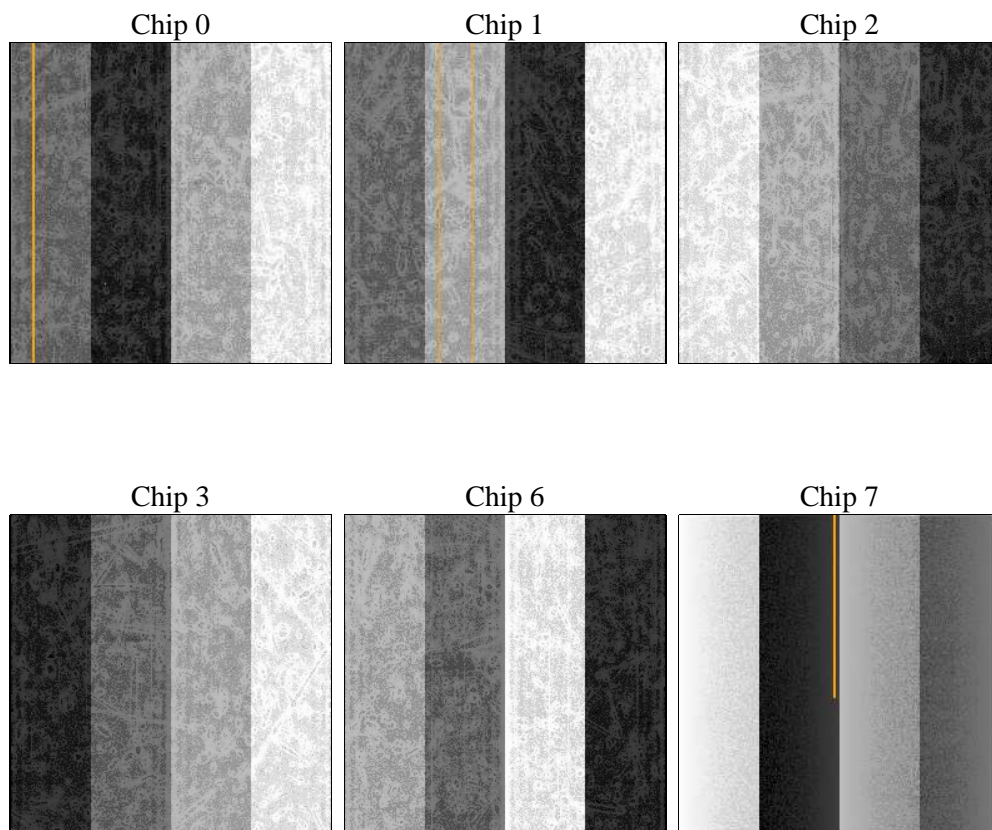
## 2 OBI

### 2.1 OBI

#### 2.1.1 Images



#### 2.1.2 Bias



### 2.1.3 Parameters

obi_num	0	Obi number	sched_exp_time	0.0	[s] Scheduled observation exposure time
ascdsver	10.2.1	Processing system revision	ontime	8291.0330875516	Sum of GTIs [s]
caldbver	4.6.0	&#160	ontime0	8290.9920475483	Sum of GTIs [s]
date	2014-03-24T15:15:02	Date and time of file creation	ontime1	8290.951007545	Sum of GTIs [s]
revision	1	Processing version of data	ontime2	8290.9099675417	Sum of GTIs [s]
			ontime3	8291.0741275549	Sum of GTIs [s]
			ontime6	8290.8689275384	Sum of GTIs [s]
			ontime7	8291.0330875516	Sum of GTIs [s]
			l1events	836502	Number of level 1 events

### 2.1.4 Events

	ccd 0	ccd 1	ccd 2	ccd 3	ccd 6	ccd 7		ccd 0	ccd 1	ccd 2	ccd 3	ccd 6	ccd 7
level 1 events	132332	146009	151607	149381	142420	114753	grade 0 events	13562	13262	14067	13996	13452	7005
rejected events	105468	117197	124435	122365	114503	64096		10%	9%	9%	9%	9%	6%
rejected %	79%	80%	82%	81%	80%	55%	grade 1 events	77	57	76	85	55	87
								0%	0%	0%	0%	0%	0%
							grade 2 events	5493	7505	5263	5169	5884	12623
								4%	5%	3%	3%	4%	11%
							grade 3 events	1804	1782	1864	1915	1855	4028
								1%	1%	1%	1%	1%	3%
							grade 4 events	1849	1779	1938	1883	1851	3967
								1%	1%	1%	1%	1%	3%
							grade 5 events	2630	2693	2516	3010	2954	6968
								1%	1%	1%	2%	2%	6%
							grade 6 events	4167	4495	4049	4061	4882	23049
								3%	3%	2%	2%	3%	20%
							grade 7 events	102750	114436	121834	119262	111487	57026
								77%	78%	80%	79%	78%	49%

## 2.2 Compared Parameters

Parameter	Planned	Actual	Parameter	Planned	Actual
Instrument	ACIS	ACIS	Obspar format version number	7	7
Detector	ACIS-012367	ACIS-012367	Obspar file type	PREDICTED	ACTUAL
Grating	NONE	NONE	Obspar update status	NONE	UPDATED
Data mode	FAINT	FAINT	Number of optional ACIS chips dropped	0	0
Observation mode	SECONDARY	SECONDARY	On-chip summing requested	N	N
[deg] Pointing RA	0	148.0241179190478	Subarray requested	NONE	NONE
[deg] Pointing Dec	0	-0.01988949181712393	Alternating exposures requested	N	N
[deg] Pointing Roll	0.0	267.9334411448013	[s] Primary exposure time	3.2	3.2
[mm] SIM focus pos	-1.429586	-1.428180813131781			
[mm] SIM defocus	0.1037507710433287	0.1051558262725154			
[mm] SIM translation stage pos	250.455976	250.466033080201			
[mm] SIM translation stage offset	0	-0.01005468664627074			
[s] Observation start time (MET)	512007468.833908	512007467.80891			
Observation start date	2014-03-24T00:17:49	2014-03-24T00:17:47			
[s] Observation end time (MET)	512017388.784454	512017387.75945			
Observation end date	2014-03-24T03:03:09	2014-03-24T03:03:07			
Read mode	TIMED	TIMED			

## 2.3 Star Slots

## 2.4 FID Slots

## A Summary

### A.1 Status

V&V Scientist	Beth Sundheim
V&V Date (YYYY-MM-DD)	2014.03.24
V&V Edition	1
V&V Disposition and Status	OK
V&V Charge Time	8.2910330875516

### A.2 Comments