

V&V Reference Report

L2 ASCDS Version : 10.2.1

Observation 52816 - L2 Version 1
Chandra X-Ray Center

L2 Processing Date : Apr 25 2014

Contents

1	Front	2
2	OBI	3
2.1	OBI	3
2.1.1	Images	3
2.1.2	Bias	3
2.1.3	Parameters	4
2.1.4	Events	4
2.2	Compared Parameters	5
2.3	Star Slots	6
2.4	FID Slots	6
A	Summary	7
A.1	Status	7
A.2	Comments	7

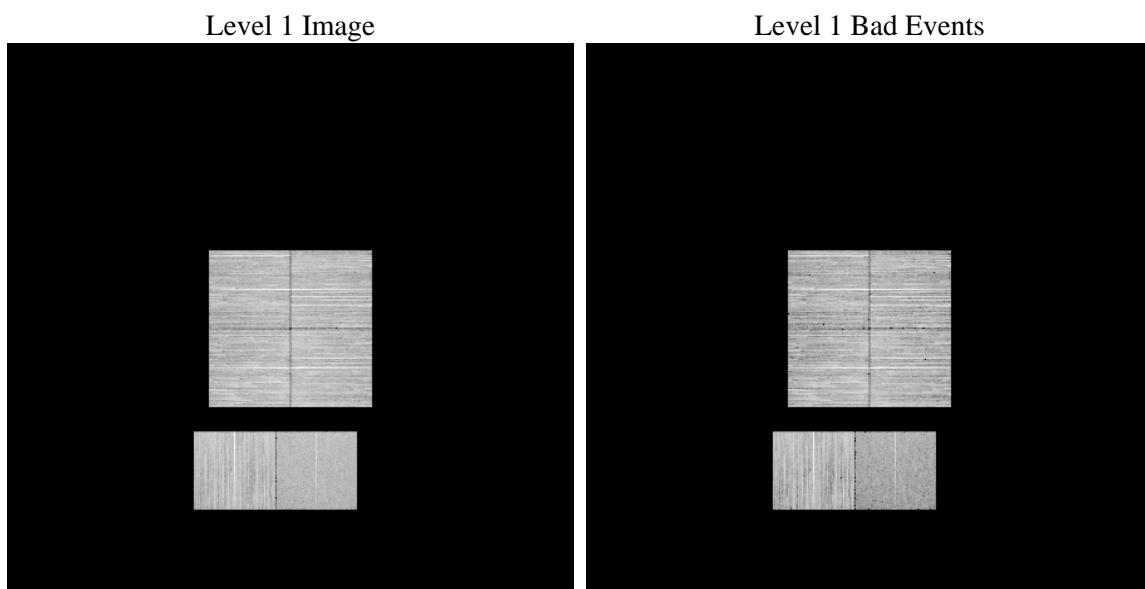
1 Front

seq_num	 	Sequence number
obs_id	52816	Observation id
title	ACIS-012367 diagnostics	Proposal title
observer	CHANDRA engineering request/realtime commanding	Principal investig
object	 	Source name
dtcycle	0	
cycle	P	events from which exps? Prim/Second/Both
ra_targ	0.0	Observer's specified target RA [deg]
dec_targ	0.0	Observer's specified target Dec [deg]
ra_nom	229.00808156276	Nominal RA [deg]
dec_nom	-31.872114734096	Nominal Dec [deg]
roll_nom	43.330607832031	Nominal Roll [deg]
revision	1	Processing version of data
ontime	8293.24775666	Sum of GTIs [s]
livetime	8188.2336599709	Livetime [s]
ontime0	8293.2887966633	Sum of GTIs [s]
ontime1	8293.3298366666	Sum of GTIs [s]
ontime2	8293.3708766699	Sum of GTIs [s]
ontime3	8293.2067166567	Sum of GTIs [s]
ontime6	8294.3999691606	Sum of GTIs [s]
ontime7	8293.24775666	Sum of GTIs [s]
l2events	174333	Number of level 2 events

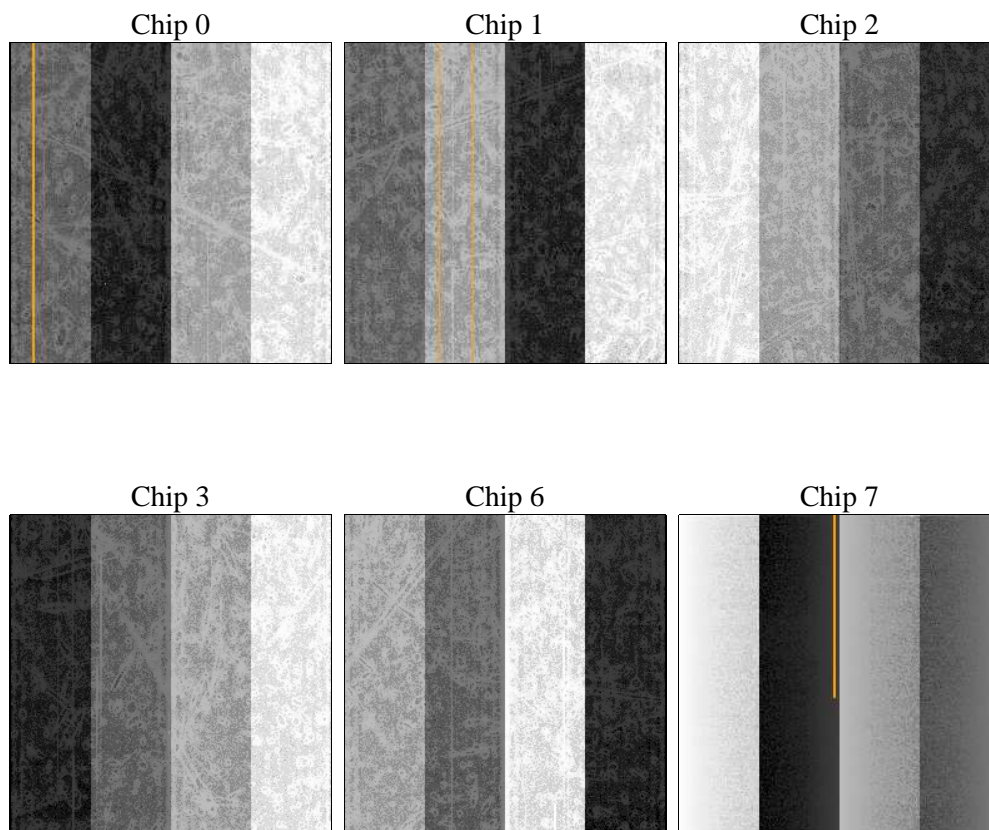
2 OBI

2.1 OBI

2.1.1 Images



2.1.2 Bias



2.1.3 Parameters

obi_num	0	Obi number	sched_exp_time	0.0	[s] Scheduled observation exposure time
ascdsver	10.2.1	Processing system revision	ontime	8293.24775666	Sum of GTIs [s]
caldsver	4.6.1	 	ontime0	8293.2887966633	Sum of GTIs [s]
date	2014-04-25T16:32:46	Date and time of file creation	ontime1	8293.3298366666	Sum of GTIs [s]
revision	1	Processing version of data	ontime2	8293.3708766699	Sum of GTIs [s]
			ontime3	8293.2067166567	Sum of GTIs [s]
			ontime6	8294.3999691606	Sum of GTIs [s]
			ontime7	8293.24775666	Sum of GTIs [s]
			l1events	810800	Number of level 1 events

2.1.4 Events

	ccd 0	ccd 1	ccd 2	ccd 3	ccd 6	ccd 7		ccd 0	ccd 1	ccd 2	ccd 3	ccd 6	ccd 7
level 1 events	130525	138699	143781	143888	141448	112459	grade 0 events	13354	12926	13893	13776	13260	7030
rejected events	104039	112159	116848	117148	114103	61631		10%	9%	9%	9%	9%	6%
rejected %	79%	80%	81%	81%	80%	54%	grade 1 events	71	48	91	81	59	83
								0%	0%	0%	0%	0%	0%
							grade 2 events	5423	5602	5180	5155	5622	12398
								4%	4%	3%	3%	3%	11%
							grade 3 events	1831	1811	1951	1839	1872	4217
								1%	1%	1%	1%	1%	3%
							grade 4 events	1783	1857	1877	1869	1833	4124
								1%	1%	1%	1%	1%	3%
							grade 5 events	2707	2758	2571	3005	2878	7177
								2%	1%	1%	2%	2%	6%
							grade 6 events	4095	4344	4032	4101	4764	23059
								3%	3%	2%	2%	3%	20%
							grade 7 events	101261	109353	114186	114062	111160	54371
								77%	78%	79%	79%	78%	48%

2.2 Compared Parameters

Parameter	Planned	Actual	Parameter	Planned	Actual
Instrument	ACIS	ACIS	Obspar format version number	7	7
Detector	ACIS-012367	ACIS-012367	Obspar file type	PREDICTED	ACTUAL
Grating	NONE	NONE	Obspar update status	NONE	UPDATED
Data mode	FAINT	FAINT	Number of optional ACIS chips dropped	0	0
Observation mode	SECONDARY	SECONDARY	On-chip summing requested	N	N
[deg] Pointing RA	0	229.008081562756	Subarray requested	NONE	NONE
[deg] Pointing Dec	0	-31.87211473409581	Alternating exposures requested	N	N
[deg] Pointing Roll	0.0	43.33060783203119	[s] Primary exposure time	3.2	3.2
[mm] SIM focus pos	-1.429586	-1.428180813131781			
[mm] SIM defocus	0.1037507710433287	0.1051558262725154			
[mm] SIM translation stage pos	250.455976	250.466033080201			
[mm] SIM translation stage offset	0	-0.01005468664627074			
[s] Observation start time (MET)	514749469.03515	514749468.01015			
Observation start date	2014-04-24T17:57:49	2014-04-24T17:57:48			
[s] Observation end time (MET)	514765942.836059	514765941.81106			
Observation end date	2014-04-24T22:32:23	2014-04-24T22:32:21			
Read mode	TIMED	TIMED			

2.3 Star Slots

2.4 FID Slots

A Summary

A.1 Status

V&V Scientist	Beth Sundheim
V&V Date (YYYY-MM-DD)	2014.04.25
V&V Edition	1
V&V Disposition and Status	OK
V&V Charge Time	8.29324775666

A.2 Comments