

# V&V Reference Report

## L2 ASCDS Version : 10.2.2

Observation 52752 - L2 Version 1  
Chandra X-Ray Center

L2 Processing Date : May 25 2014

## Contents

<b>1</b>	<b>Front</b>	<b>2</b>
<b>2</b>	<b>OBI</b>	<b>3</b>
2.1	OBI . . . . .	3
2.1.1	Images . . . . .	3
2.1.2	Bias . . . . .	3
2.1.3	Parameters . . . . .	4
2.1.4	Events . . . . .	4
2.2	Compared Parameters . . . . .	5
2.3	Star Slots . . . . .	6
2.4	FID Slots . . . . .	6
<b>A</b>	<b>Summary</b>	<b>7</b>
A.1	Status . . . . .	7
A.2	Comments . . . . .	7

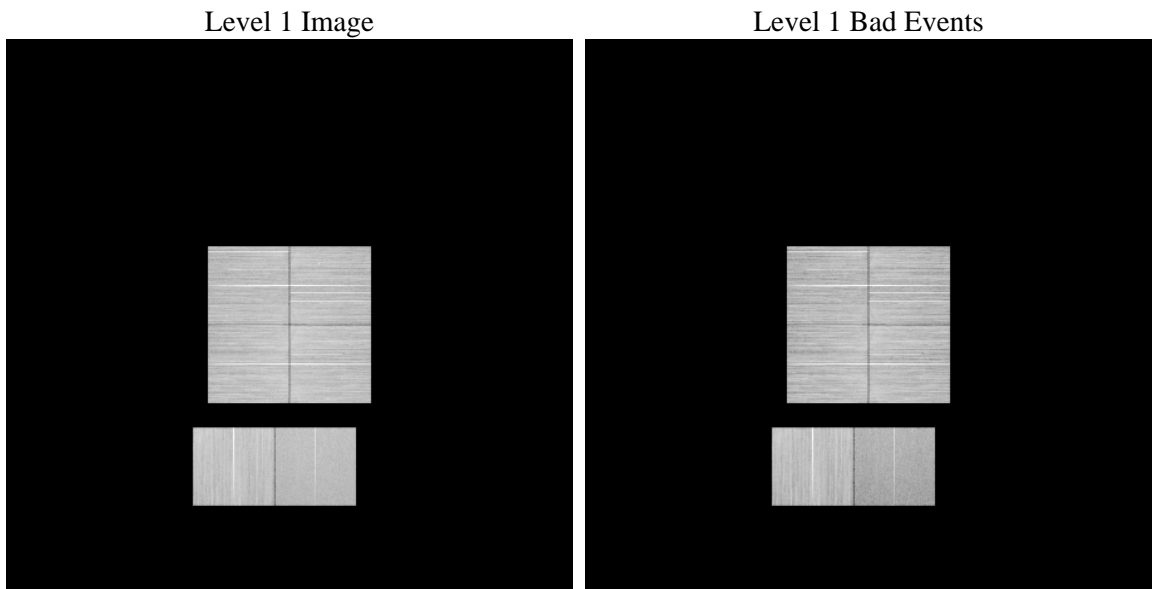
# 1 Front

seq_num	&#160	Sequence number
obs_id	52752	Observation id
title	ACIS-012367 diagnostics	Proposal title
observer	CHANDRA engineering request/realtime commanding	Principal investig
object	&#160	Source name
dtcycle	0	&#160
cycle	P	events from which exps? Prim/Second/Both
ra_targ	0.0	Observer's specified target RA [deg]
dec_targ	0.0	Observer's specified target Dec [deg]
ra_nom	277.1077340051	Nominal RA [deg]
dec_nom	-84.972876271584	Nominal Dec [deg]
roll_nom	38.036909053519	Nominal Roll [deg]
revision	1	Processing version of data
ontime	28796.762878656	Sum of GTIs [s]
livetime	28432.120927758	Livetime [s]
ontime0	28793.48083818	Sum of GTIs [s]
ontime1	28796.68079865	Sum of GTIs [s]
ontime2	28796.639758646	Sum of GTIs [s]
ontime3	28796.799892783	Sum of GTIs [s]
ontime6	28796.598718643	Sum of GTIs [s]
ontime7	28796.762878656	Sum of GTIs [s]
l2events	599350	Number of level 2 events

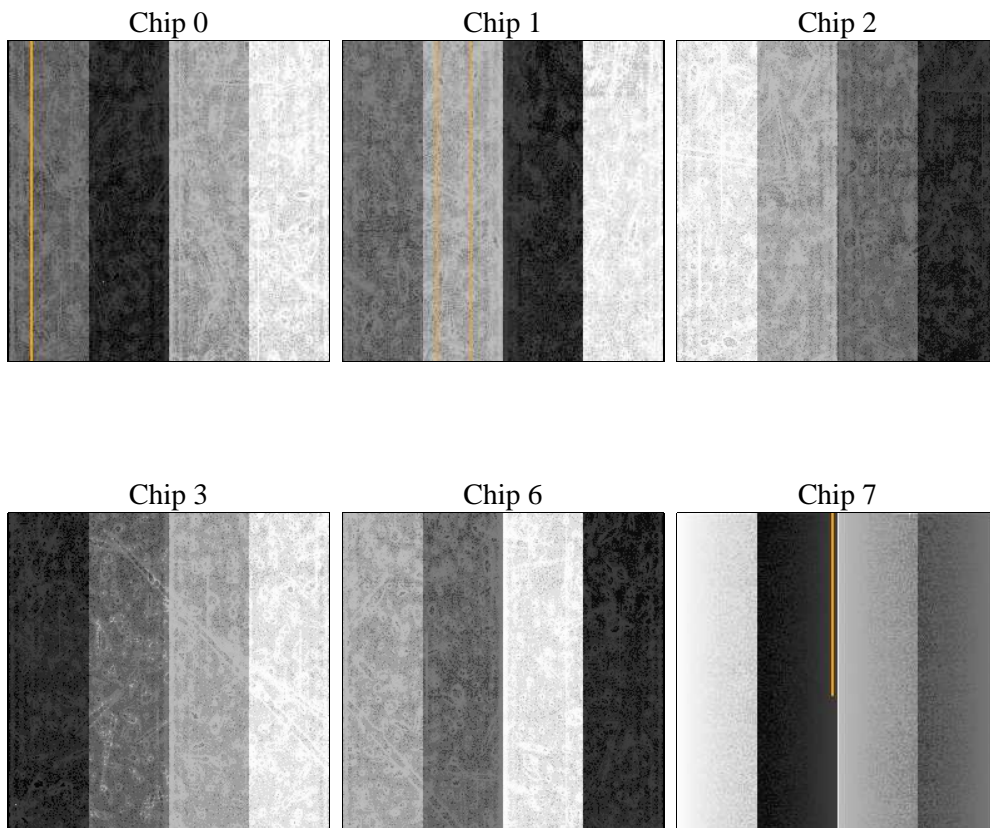
## 2 OBI

### 2.1 OBI

#### 2.1.1 Images



#### 2.1.2 Bias



### 2.1.3 Parameters

obi_num	1	Obi number	sched_exp_time	0.0	[s] Scheduled observation exposure time
ascdsver	10.2.2	Processing system revision	ontime	28796.762878656	Sum of GTIs [s]
caldsver	4.6.1	&#160	ontime0	28793.48083818	Sum of GTIs [s]
date	2014-05-25T03:57:03	Date and time of file creation	ontime1	28796.68079865	Sum of GTIs [s]
revision	1	Processing version of data	ontime2	28796.639758646	Sum of GTIs [s]
			ontime3	28796.799892783	Sum of GTIs [s]
			ontime6	28796.598718643	Sum of GTIs [s]
			ontime7	28796.762878656	Sum of GTIs [s]
			l1events	2883145	Number of level 1 events

### 2.1.4 Events

	ccd 0	ccd 1	ccd 2	ccd 3	ccd 6	ccd 7		ccd 0	ccd 1	ccd 2	ccd 3	ccd 6	ccd 7
level 1 events	465463	485103	502627	520376	513799	395777	grade 0 events	45825	44603	47342	47170	46749	24472
rejected events	374661	393997	411498	428871	418410	219805		9%	9%	9%	9%	9%	6%
rejected %	80%	81%	81%	82%	81%	55%	grade 1 events	241	207	245	250	226	291
								0%	0%	0%	0%	0%	0%
							grade 2 events	18250	19325	17581	17628	19426	42777
								3%	3%	3%	3%	3%	10%
							grade 3 events	6282	6007	6347	6365	6400	14203
								1%	1%	1%	1%	1%	3%
							grade 4 events	6247	6143	6412	6547	6343	14158
								1%	1%	1%	1%	1%	3%
							grade 5 events	9489	9488	8886	10563	10085	24557
								2%	1%	1%	2%	1%	6%
							grade 6 events	14389	15236	13657	14007	16689	80712
								3%	3%	2%	2%	3%	20%
							grade 7 events	364740	384094	402157	417846	407881	194607
								78%	79%	80%	80%	79%	49%

## 2.2 Compared Parameters

Parameter	Planned	Actual	Parameter	Planned	Actual
Instrument	ACIS	ACIS	Obspar format version number	7	7
Detector	ACIS-012367	ACIS-012367	Obspar file type	PREDICTED	ACTUAL
Grating	NONE	NONE	Obspar update status	NONE	UPDATED
Data mode	FAINT	FAINT	Number of optional ACIS chips dropped	0	0
Observation mode	SECONDARY	SECONDARY	On-chip summing requested	N	N
[deg] Pointing RA	0	277.1077340051019	Subarray requested	NONE	NONE
[deg] Pointing Dec	0	-84.97287627158448	Alternating exposures requested	N	N
[deg] Pointing Roll	0.0	38.0369090535189	[s] Primary exposure time	3.2	3.2
[mm] SIM focus pos	-1.429586	-1.428180813131781			
[mm] SIM defocus	0.1037507710433287	0.1051558262725154			
[mm] SIM translation stage pos	250.455976	250.466033080201			
[mm] SIM translation stage offset	0	-0.01005468664627074			
[s] Observation start time (MET)	517296883.225834	517296882.20083			
Observation start date	2014-05-24T05:34:43	2014-05-24T05:34:42			
[s] Observation end time (MET)	517327448.727524	517327447.70252			
Observation end date	2014-05-24T14:04:09	2014-05-24T14:04:07			
Read mode	TIMED	TIMED			

## 2.3 Star Slots

## 2.4 FID Slots

## A Summary

### A.1 Status

V&V Scientist	Jen Lauer
V&V Date (YYYY-MM-DD)	2014.05.27
V&V Edition	1
V&V Disposition and Status	OK
V&V Charge Time	28.796762878656

### A.2 Comments