

V&V Reference Report

L2 ASCDS Version : 10.2.2

Observation 52729 - L2 Version 1
Chandra X-Ray Center

L2 Processing Date : Jun 4 2014

Contents

1	Front	2
2	OBI	3
2.1	OBI	3
2.1.1	Images	3
2.1.2	Bias	3
2.1.3	Parameters	4
2.1.4	Events	4
2.2	Compared Parameters	5
2.3	Star Slots	6
2.4	FID Slots	6
A	Summary	7
A.1	Status	7
A.2	Comments	7

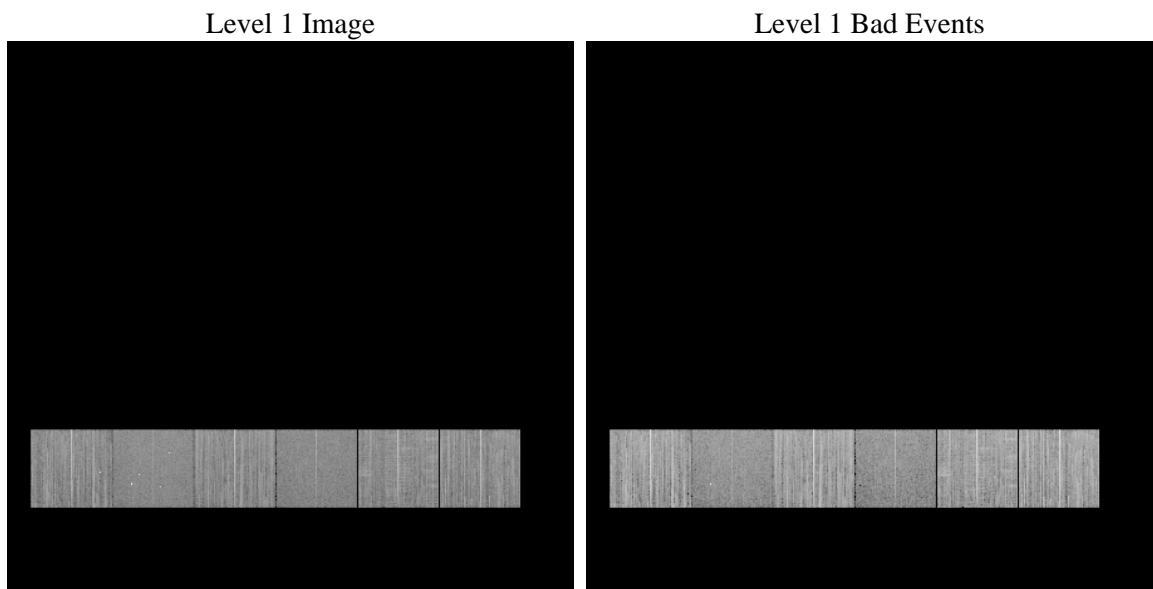
1 Front

seq_num	 	Sequence number
obs_id	52729	Observation id
title	ACIS-456789 diagnostics	Proposal title
observer	CHANDRA engineering request/realtime commanding	Principal investig
object	 	Source name
dtcycle	0	
cycle	P	events from which exps? Prim/Second/Both
ra_targ	0.0	Observer's specified target RA [deg]
dec_targ	0.0	Observer's specified target Dec [deg]
ra_nom	151.31055327048	Nominal RA [deg]
dec_nom	31.472745161316	Nominal Dec [deg]
roll_nom	255.3990894653	Nominal Roll [deg]
revision	1	Processing version of data
ontime	8422.3999686837	Sum of GTIs [s]
livetime	8315.7504689198	Livetime [s]
ontime4	8422.3999686837	Sum of GTIs [s]
ontime5	8422.3999686837	Sum of GTIs [s]
ontime6	8422.3999686837	Sum of GTIs [s]
ontime7	8422.3999686837	Sum of GTIs [s]
ontime8	8422.3999686837	Sum of GTIs [s]
ontime9	8422.3999686837	Sum of GTIs [s]
l2events	206871	Number of level 2 events

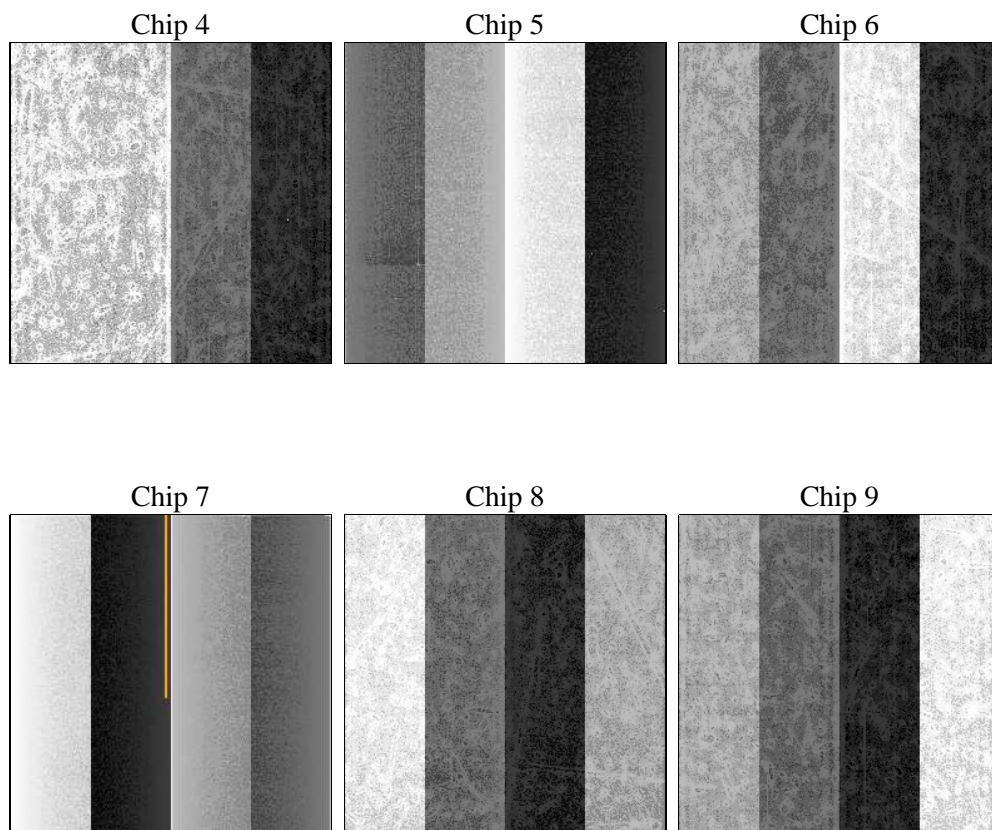
2 OBI

2.1 OBI

2.1.1 Images



2.1.2 Bias



2.1.3 Parameters

obi_num	0	Obi number	sched_exp_time	0.0	[s] Scheduled observation exposure time
ascdsver	10.2.2	Processing system revision	ontime	8422.3999686837	Sum of GTIs [s]
caldsver	4.6.1	 	ontime4	8422.3999686837	Sum of GTIs [s]
date	2014-06-04T05:16:08	Date and time of file creation	ontime5	8422.3999686837	Sum of GTIs [s]
revision	1	Processing version of data	ontime6	8422.3999686837	Sum of GTIs [s]
			ontime7	8422.3999686837	Sum of GTIs [s]
			ontime8	8422.3999686837	Sum of GTIs [s]
			ontime9	8422.3999686837	Sum of GTIs [s]
			l1events	867195	Number of level 1 events

2.1.4 Events

	ccd 4	ccd 5	ccd 6	ccd 7	ccd 8	ccd 9		ccd 4	ccd 5	ccd 6	ccd 7	ccd 8	ccd 9
level 1 events	148995	132235	153833	118646	153603	159883	grade 0 events	15759	7319	13661	7080	15808	13567
rejected events	120332	72782	125739	66095	116624	132609		10%	5%	8%	5%	10%	8%
rejected %	80%	55%	81%	55%	75%	82%	grade 1 events	96	154	54	75	81	72
								0%	0%	0%	0%	0%	0%
							grade 2 events	5276	21765	5873	12924	7763	5437
								3%	16%	3%	10%	5%	3%
							grade 3 events	1944	2046	1807	4254	2973	2036
								1%	1%	1%	3%	1%	1%
							grade 4 events	1823	1969	1848	4083	2910	1813
								1%	1%	1%	3%	1%	1%
							grade 5 events	3216	6291	3004	7414	3962	3521
								2%	4%	1%	6%	2%	2%
							grade 6 events	3923	26468	4952	24302	7598	4476
								2%	20%	3%	20%	4%	2%
							grade 7 events	116958	66223	122634	58514	112508	128961
								78%	50%	79%	49%	73%	80%

2.2 Compared Parameters

Parameter	Planned	Actual	Parameter	Planned	Actual
Instrument	ACIS	ACIS	Obspar format version number	7	7
Detector	ACIS-456789	ACIS-456789	Obspar file type	PREDICTED	ACTUAL
Grating	NONE	NONE	Obspar update status	NONE	UPDATED
Data mode	FAINT	FAINT	Number of optional ACIS chips dropped	0	0
Observation mode	SECONDARY	SECONDARY	On-chip summing requested	N	N
[deg] Pointing RA	0	151.3105532704816	Subarray requested	NONE	NONE
[deg] Pointing Dec	0	31.47274516131609	Alternating exposures requested	N	N
[deg] Pointing Roll	0.0	255.3990894652958	[s] Primary exposure time	3.2	3.2
[mm] SIM focus pos	-1.429586	-1.428180813131781			
[mm] SIM defocus	0.1037507710433287	0.1051558262725154			
[mm] SIM translation stage pos	250.455976	250.466033080201			
[mm] SIM translation stage offset	0	-0.01005468664627074			
[s] Observation start time (MET)	518210357.126287	518210356.10129			
Observation start date	2014-06-03T19:19:17	2014-06-03T19:19:16			
[s] Observation end time (MET)	518222300.426947	518222299.40195			
Observation end date	2014-06-03T22:38:20	2014-06-03T22:38:19			
Read mode	TIMED	TIMED			

2.3 Star Slots

2.4 FID Slots

A Summary

A.1 Status

V&V Scientist	Jen Lauer
V&V Date (YYYY-MM-DD)	2014.06.04
V&V Edition	1
V&V Disposition and Status	OK
V&V Charge Time	8.4223999686837

A.2 Comments