

V&V Reference Report

L2 ASCDS Version : 10.2.2

Observation 52675 - L2 Version 1
Chandra X-Ray Center

L2 Processing Date : Jun 27 2014

Contents

1	Front	2
2	OBI	3
2.1	OBI	3
2.1.1	Images	3
2.1.2	Bias	3
2.1.3	Parameters	4
2.1.4	Events	4
2.2	Compared Parameters	5
2.3	Star Slots	6
2.4	FID Slots	6
A	Summary	7
A.1	Status	7
A.2	Comments	7

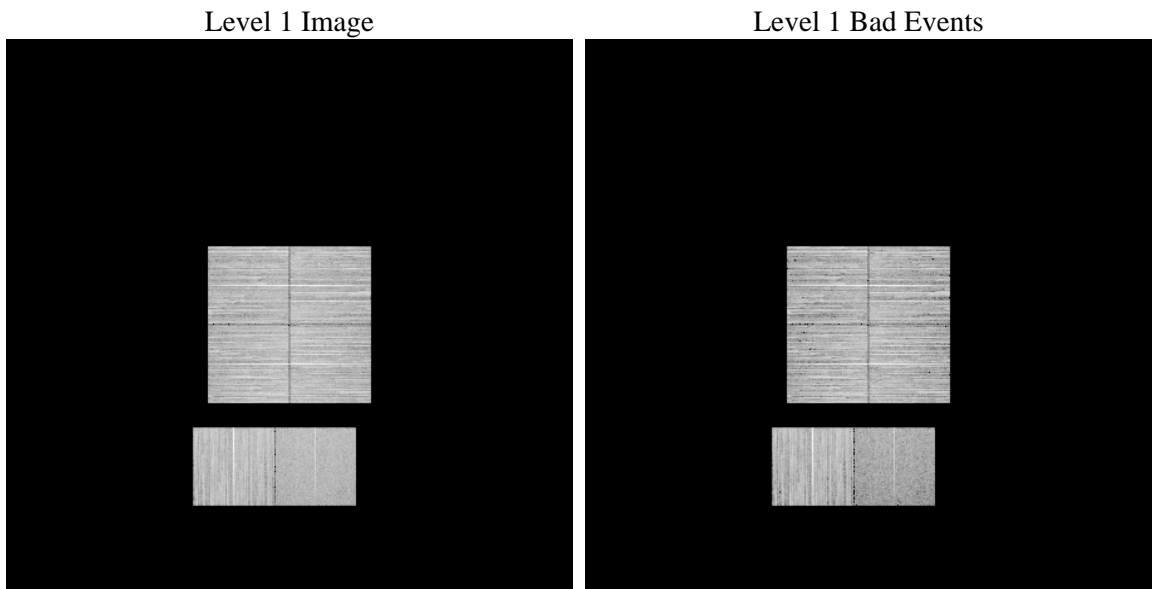
1 Front

seq_num	 	Sequence number
obs_id	52675	Observation id
title	ACIS-012367 diagnostics	Proposal title
observer	CHANDRA engineering request/realtime commanding	Principal investig
object	 	Source name
dtcycle	0	
cycle	P	events from which exps? Prim/Second/Both
ra_targ	0.0	Observer's specified target RA [deg]
dec_targ	0.0	Observer's specified target Dec [deg]
ra_nom	92.572264316027	Nominal RA [deg]
dec_nom	-25.013927137646	Nominal Dec [deg]
roll_nom	176.19301660305	Nominal Roll [deg]
revision	1	Processing version of data
ontime	8291.1999691725	Sum of GTIs [s]
livetime	8186.2118028016	Livetime [s]
ontime0	8291.1999691725	Sum of GTIs [s]
ontime1	8291.1999691725	Sum of GTIs [s]
ontime2	8291.1999691725	Sum of GTIs [s]
ontime3	8291.1999691725	Sum of GTIs [s]
ontime6	8291.1999691725	Sum of GTIs [s]
ontime7	8291.1999691725	Sum of GTIs [s]
l2events	174065	Number of level 2 events

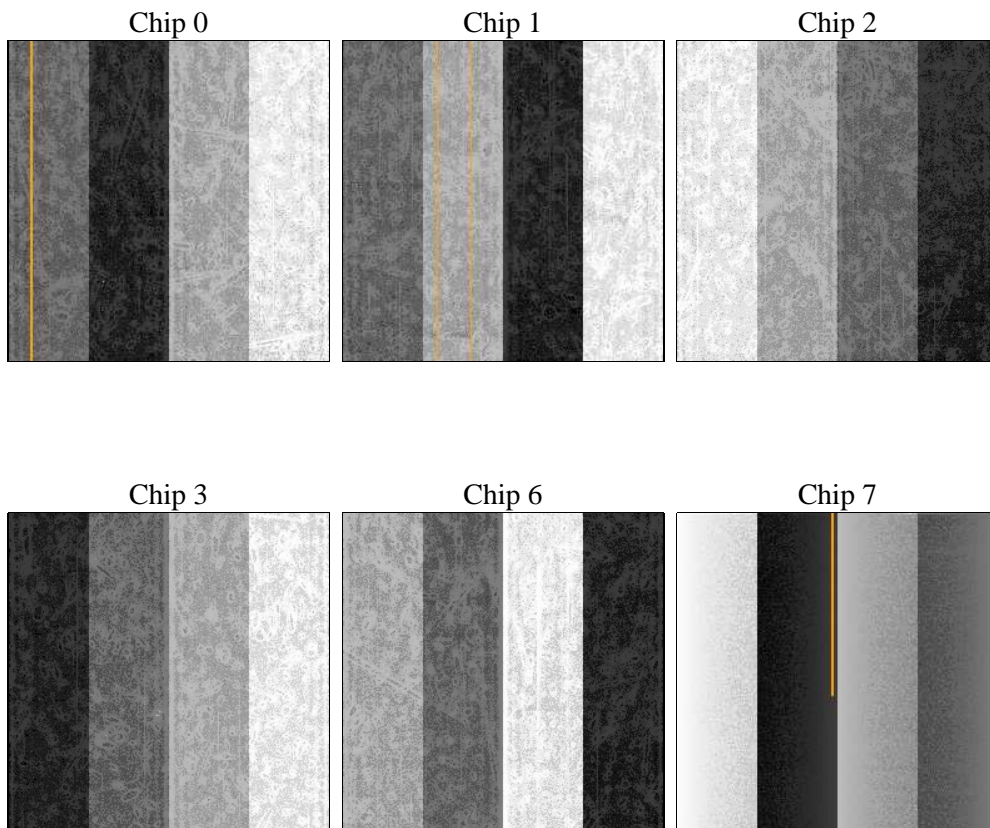
2 OBI

2.1 OBI

2.1.1 Images



2.1.2 Bias



2.1.3 Parameters

obi_num	0	Obi number	sched_exp_time	0.0	[s] Scheduled observation exposure time
ascdsver	10.2.2	Processing system revision	ontime	8291.1999691725	Sum of GTIs [s]
caldsver	4.6.1	 	ontime0	8291.1999691725	Sum of GTIs [s]
date	2014-06-28T01:06:21	Date and time of file creation	ontime1	8291.1999691725	Sum of GTIs [s]
revision	1	Processing version of data	ontime2	8291.1999691725	Sum of GTIs [s]
			ontime3	8291.1999691725	Sum of GTIs [s]
			ontime6	8291.1999691725	Sum of GTIs [s]
			ontime7	8291.1999691725	Sum of GTIs [s]
			l1events	809092	Number of level 1 events

2.1.4 Events

	ccd 0	ccd 1	ccd 2	ccd 3	ccd 6	ccd 7		ccd 0	ccd 1	ccd 2	ccd 3	ccd 6	ccd 7
level 1 events	131972	134658	143639	142924	143267	112632	grade 0 events	13255	13016	13927	13665	13468	7114
rejected events	105493	107807	116776	116488	115597	62002		10%	9%	9%	9%	9%	6%
rejected %	79%	80%	81%	81%	80%	55%	grade 1 events	73	68	81	80	63	79
								0%	0%	0%	0%	0%	0%
							grade 2 events	5372	5783	5117	5058	5648	12442
								4%	4%	3%	3%	3%	11%
							grade 3 events	1767	1750	1834	1817	1780	4133
								1%	1%	1%	1%	1%	3%
							grade 4 events	1801	1815	1921	1867	1838	4143
								1%	1%	1%	1%	1%	3%
							grade 5 events	2663	2659	2435	3001	2874	7087
								2%	1%	1%	2%	2%	6%
							grade 6 events	4284	4487	4064	4029	4936	22798
								3%	3%	2%	2%	3%	20%
							grade 7 events	102757	105080	114260	113407	112660	54836
								77%	78%	79%	79%	78%	48%

2.2 Compared Parameters

Parameter	Planned	Actual	Parameter	Planned	Actual
Instrument	ACIS	ACIS	Obspar format version number	7	7
Detector	ACIS-012367	ACIS-012367	Obspar file type	PREDICTED	ACTUAL
Grating	NONE	NONE	Obspar update status	NONE	UPDATED
Data mode	FAINT	FAINT	Number of optional ACIS chips dropped	0	0
Observation mode	SECONDARY	SECONDARY	On-chip summing requested	N	N
[deg] Pointing RA	0	92.57226431602712	Subarray requested	NONE	NONE
[deg] Pointing Dec	0	-25.01392713764579	Alternating exposures requested	N	N
[deg] Pointing Roll	0.0	176.1930166030477	[s] Primary exposure time	3.2	3.2
[mm] SIM focus pos	-1.429586	-1.428180813131781			
[mm] SIM defocus	0.1037507710433287	0.1051558262725154			
[mm] SIM translation stage pos	250.455976	250.466033080201			
[mm] SIM translation stage offset	0	-0.01005468664627074			
[s] Observation start time (MET)	520230070.537989	520230069.51299			
Observation start date	2014-06-27T04:21:11	2014-06-27T04:21:09			
[s] Observation end time (MET)	520245080.63882	520245079.61382			
Observation end date	2014-06-27T08:31:21	2014-06-27T08:31:19			
Read mode	TIMED	TIMED			

2.3 Star Slots

2.4 FID Slots

A Summary

A.1 Status

V&V Scientist	Beth Sundheim
V&V Date (YYYY-MM-DD)	2014.06.28
V&V Edition	1
V&V Disposition and Status	OK
V&V Charge Time	8.2911999691725

A.2 Comments