

V&V Reference Report

L2 ASCDS Version : 10.2.2

Observation 52660 - L2 Version 1
Chandra X-Ray Center

L2 Processing Date : Jul 5 2014

Contents

1	Front	2
2	OBI	3
2.1	OBI	3
2.1.1	Images	3
2.1.2	Bias	3
2.1.3	Parameters	4
2.1.4	Events	4
2.2	Compared Parameters	5
2.3	Star Slots	6
2.4	FID Slots	6
A	Summary	7
A.1	Status	7
A.2	Comments	7

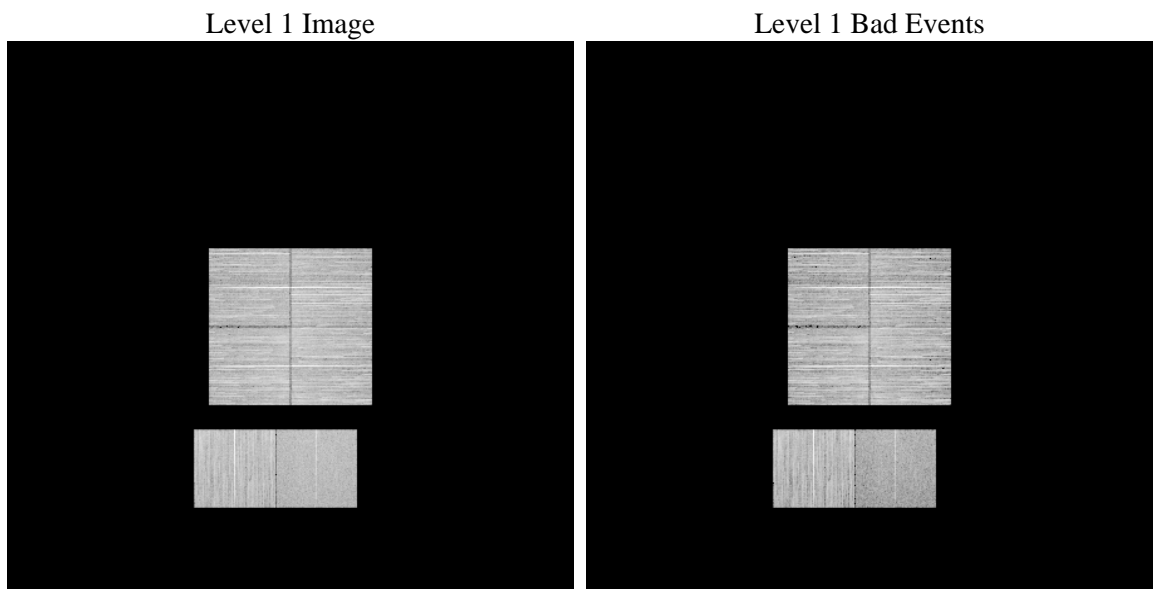
1 Front

seq_num	 	Sequence number
obs_id	52660	Observation id
title	ACIS-012367 diagnostics	Proposal title
observer	CHANDRA engineering request/realtime commanding	Principal investig
object	 	Source name
dtcycle	0	
cycle	P	events from which exps? Prim/Second/Both
ra_targ	0.0	Observer's specified target RA [deg]
dec_targ	0.0	Observer's specified target Dec [deg]
ra_nom	181.28346302717	Nominal RA [deg]
dec_nom	-11.357034828547	Nominal Dec [deg]
roll_nom	250.29818292589	Nominal Roll [deg]
revision	1	Processing version of data
ontime	8089.5999699235	Sum of GTIs [s]
livetime	7987.164584132	Livetime [s]
ontime0	8089.5770350099	Sum of GTIs [s]
ontime1	8089.5359950066	Sum of GTIs [s]
ontime2	8089.4949550033	Sum of GTIs [s]
ontime3	8089.5999699235	Sum of GTIs [s]
ontime6	8089.453915	Sum of GTIs [s]
ontime7	8089.5999699235	Sum of GTIs [s]
l2events	175747	Number of level 2 events

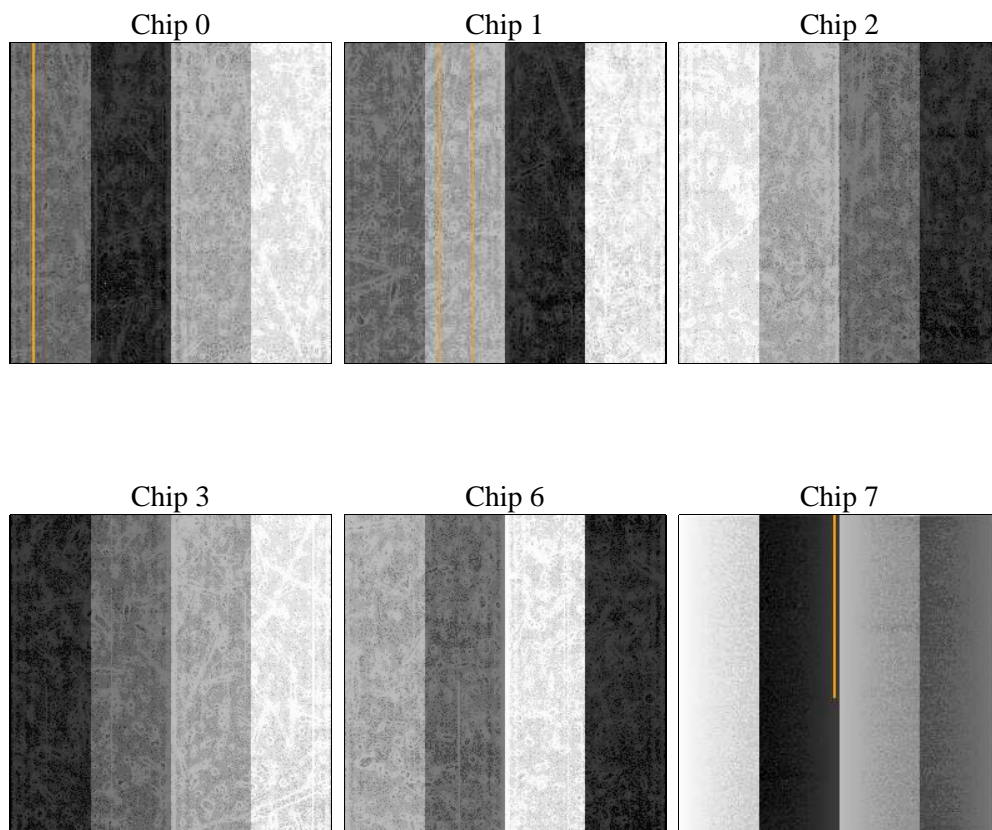
2 OBI

2.1 OBI

2.1.1 Images



2.1.2 Bias



2.1.3 Parameters

obi_num	0	Obi number	sched_exp_time	0.0	[s] Scheduled observation exposure time
ascdsver	10.2.2	Processing system revision	ontime	8089.5999699235	Sum of GTIs [s]
caldbver	4.6.1	 	ontime0	8089.5770350099	Sum of GTIs [s]
date	2014-07-05T17:00:56	Date and time of file creation	ontime1	8089.5359950066	Sum of GTIs [s]
revision	1	Processing version of data	ontime2	8089.4949550033	Sum of GTIs [s]
			ontime3	8089.5999699235	Sum of GTIs [s]
			ontime6	8089.453915	Sum of GTIs [s]
			ontime7	8089.5999699235	Sum of GTIs [s]
			l1events	818889	Number of level 1 events

2.1.4 Events

	ccd 0	ccd 1	ccd 2	ccd 3	ccd 6	ccd 7		ccd 0	ccd 1	ccd 2	ccd 3	ccd 6	ccd 7
level 1 events	128832	138988	145358	147630	142155	115926	grade 0 events	13621	13061	14169	14000	13883	7349
rejected events	102130	112009	118377	120802	114102	65035		10%	9%	9%	9%	9%	6%
rejected %	79%	80%	81%	81%	80%	56%	grade 1 events	77	59	72	83	68	74
								0%	0%	0%	0%	0%	0%
							grade 2 events	5712	6071	5486	5295	6150	12731
								4%	4%	3%	3%	4%	10%
							grade 3 events	1837	1876	1841	1947	1938	4221
								1%	1%	1%	1%	1%	3%
							grade 4 events	1863	1930	1890	1955	1855	4139
								1%	1%	1%	1%	1%	3%
							grade 5 events	2773	2678	2629	2947	2879	7237
								2%	1%	1%	1%	2%	6%
							grade 6 events	4586	4945	4455	4520	5170	23901
								3%	3%	3%	3%	3%	20%
							grade 7 events	98363	108368	114816	116883	110212	56274
								76%	77%	78%	79%	77%	48%

2.2 Compared Parameters

Parameter	Planned	Actual
Instrument	ACIS	ACIS
Detector	ACIS-012367	ACIS-012367
Grating	NONE	NONE
Data mode	FAINT	FAINT
Observation mode	SECONDARY	SECONDARY
[deg] Pointing RA	0	181.2834630271665
[deg] Pointing Dec	0	-11.35703482854697
[deg] Pointing Roll	0.0	250.2981829258916
SIM focus pos (mm)	-1.4281808131	-1.4281808131
[mm] SIM defocus	0.1051557500557434	0.1051557500557434
SIM translation stage pos (mm)	250.4660330802	250.4660330802
[mm] SIM translation stage offset	-0.01005726120527584	-0.01005726120527584
[s] Observation start time (MET)	520914762.375887	520914762.375887
Observation start date	2014-07-05T02:32:42	2014-07-05T02:32:42
[s] Observation end time (MET)	520925003.248974	520925003.248974
Observation end date	2014-07-05T05:23:23	2014-07-05T05:23:23
Read mode	TIMED	TIMED

Parameter	Planned	Actual
Obspar format version number	7	7
Obspar file type	PREDICTED	ACTUAL
Obspar update status	OVERRIDE	OVERRIDE
Number of optional ACIS chips dropped	0	0
On-chip summing requested	N	N
Subarray requested	NONE	NONE
Alternating exposures requested	N	N
[s] Primary exposure time	3.2	3.2

2.3 Star Slots

2.4 FID Slots

A Summary

A.1 Status

V&V Scientist	Beth Sundheim
V&V Date (YYYY-MM-DD)	2014.07.06
V&V Edition	1
V&V Disposition and Status	OK
V&V Charge Time	8.0895999699235

A.2 Comments