

V&V Reference Report

L2 ASCDS Version : 10.2.4

Observation 52597 - L2 Version 1
Chandra X-Ray Center

L2 Processing Date : Jul 30 2014

Contents

1	Front	2
2	OBI	3
2.1	OBI	3
2.1.1	Images	3
2.1.2	Bias	3
2.1.3	Parameters	4
2.1.4	Events	4
2.2	Compared Parameters	5
2.3	Star Slots	6
2.4	FID Slots	6
A	Summary	7
A.1	Status	7
A.2	Comments	7

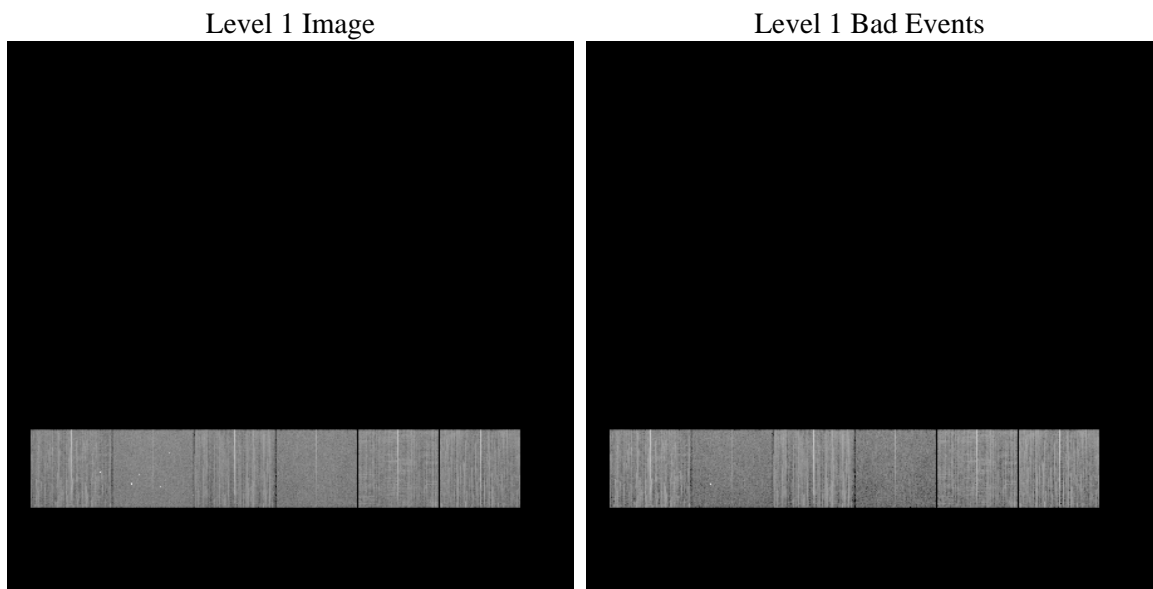
1 Front

seq_num	 	Sequence number
obs_id	52597	Observation id
title	ACIS-456789 diagnostics	Proposal title
observer	CHANDRA engineering request/realtime commanding	Principal investig
object	 	Source name
dtcycle	0	
cycle	P	events from which exps? Prim/Second/Both
ra_targ	0.0	Observer's specified target RA [deg]
dec_targ	0.0	Observer's specified target Dec [deg]
ra_nom	283.01688599737	Nominal RA [deg]
dec_nom	-27.019513114731	Nominal Dec [deg]
roll_nom	284.1808041628	Nominal Roll [deg]
revision	1	Processing version of data
ontime	8460.7999685407	Sum of GTIs [s]
livetime	8353.6642248569	Livetime [s]
ontime4	8457.5048457384	Sum of GTIs [s]
ontime5	8460.7999685407	Sum of GTIs [s]
ontime6	8460.7869160771	Sum of GTIs [s]
ontime7	8460.7999685407	Sum of GTIs [s]
ontime8	8460.7048360705	Sum of GTIs [s]
ontime9	8460.7999685407	Sum of GTIs [s]
l2events	203344	Number of level 2 events

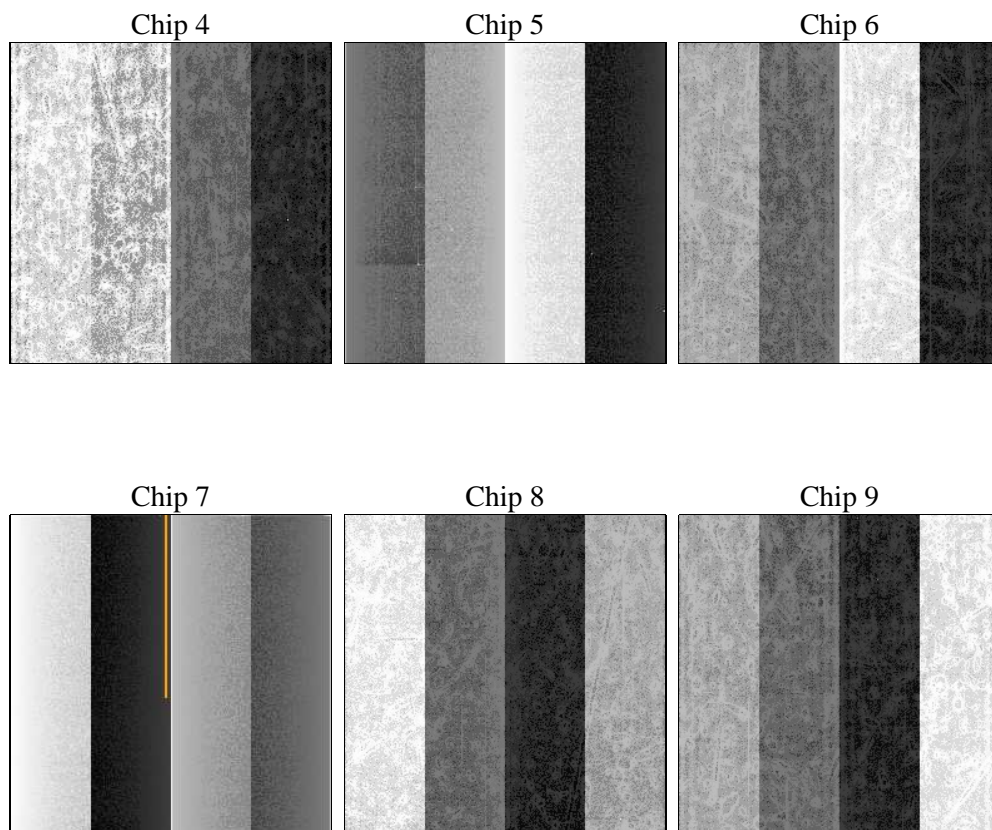
2 OBI

2.1 OBI

2.1.1 Images



2.1.2 Bias



2.1.3 Parameters

obi_num	1	Obi number	sched_exp_time	0.0	[s] Scheduled observation exposure time
ascdsver	10.2.4	Processing system revision	ontime	8460.7999685407	Sum of GTIs [s]
caldsver	4.6.2	 	ontime4	8457.5048457384	Sum of GTIs [s]
date	2014-07-30T03:48:10	Date and time of file creation	ontime5	8460.7999685407	Sum of GTIs [s]
revision	1	Processing version of data	ontime6	8460.7869160771	Sum of GTIs [s]
			ontime7	8460.7999685407	Sum of GTIs [s]
			ontime8	8460.7048360705	Sum of GTIs [s]
			ontime9	8460.7999685407	Sum of GTIs [s]
			l1events	849939	Number of level 1 events

2.1.4 Events

	ccd 4	ccd 5	ccd 6	ccd 7	ccd 8	ccd 9		ccd 4	ccd 5	ccd 6	ccd 7	ccd 8	ccd 9
level 1 events	147316	131452	150171	119651	151275	150074	grade 0 events	16093	5892	13120	7090	15585	13175
rejected events	118711	74220	122939	67296	115356	123399		10%	4%	8%	5%	10%	8%
rejected %	80%	56%	81%	56%	76%	82%	grade 1 events	122	121	59	102	87	77
								0%	0%	0%	0%	0%	0%
							grade 2 events	5183	21175	5774	12892	7417	5208
								3%	16%	3%	10%	4%	3%
							grade 3 events	1867	1924	1774	4228	2976	1985
								1%	1%	1%	3%	1%	1%
							grade 4 events	1926	1969	1822	4186	2922	1813
								1%	1%	1%	3%	1%	1%
							grade 5 events	3073	6091	3018	7452	4016	3426
								2%	4%	2%	6%	2%	2%
							grade 6 events	3536	26272	4742	23959	7019	4494
								2%	19%	3%	20%	4%	2%
							grade 7 events	115516	68008	119862	59742	111253	119896
								78%	51%	79%	49%	73%	79%

2.2 Compared Parameters

Parameter	Planned	Actual	Parameter	Planned	Actual
Instrument	ACIS	ACIS	Obspar format version number	7	7
Detector	ACIS-456789	ACIS-456789	Obspar file type	PREDICTED	ACTUAL
Grating	NONE	NONE	Obspar update status	NONE	UPDATED
Data mode	FAINT	FAINT	Number of optional ACIS chips dropped	0	0
Observation mode	SECONDARY	SECONDARY	On-chip summing requested	N	N
[deg] Pointing RA	0	283.016885997373	Subarray requested	NONE	NONE
[deg] Pointing Dec	0	-27.01951311473104	Alternating exposures requested	N	N
[deg] Pointing Roll	0.0	284.1808041628026	[s] Primary exposure time	3.2	3.2
[mm] SIM focus pos	-1.429586	-1.428180813131781			
[mm] SIM defocus	0.1037507710433287	0.1051558262725154			
[mm] SIM translation stage pos	250.455976	250.466033080201			
[mm] SIM translation stage offset	0	-0.01005468664627074			
[s] Observation start time (MET)	523008044.141722	523008043.11672			
Observation start date	2014-07-29T08:00:44	2014-07-29T08:00:43			
[s] Observation end time (MET)	523019247.392341	523019246.36734			
Observation end date	2014-07-29T11:07:27	2014-07-29T11:07:26			
Read mode	TIMED	TIMED			

2.3 Star Slots

2.4 FID Slots

A Summary

A.1 Status

V&V Scientist	Joy Nichols
V&V Date (YYYY-MM-DD)	2014.07.30
V&V Edition	1
V&V Disposition and Status	OK
V&V Charge Time	8.4607999685407

A.2 Comments