

V&V Reference Report

L2 ASCDS Version : 10.2.4

Observation 52559 - L2 Version 1
Chandra X-Ray Center

L2 Processing Date : Aug 11 2014

Contents

1	Front	2
2	OBI	3
2.1	OBI	3
2.1.1	Images	3
2.1.2	Bias	3
2.1.3	Parameters	4
2.1.4	Events	4
2.2	Compared Parameters	5
2.3	Star Slots	6
2.4	FID Slots	6
A	Summary	7
A.1	Status	7
A.2	Comments	7

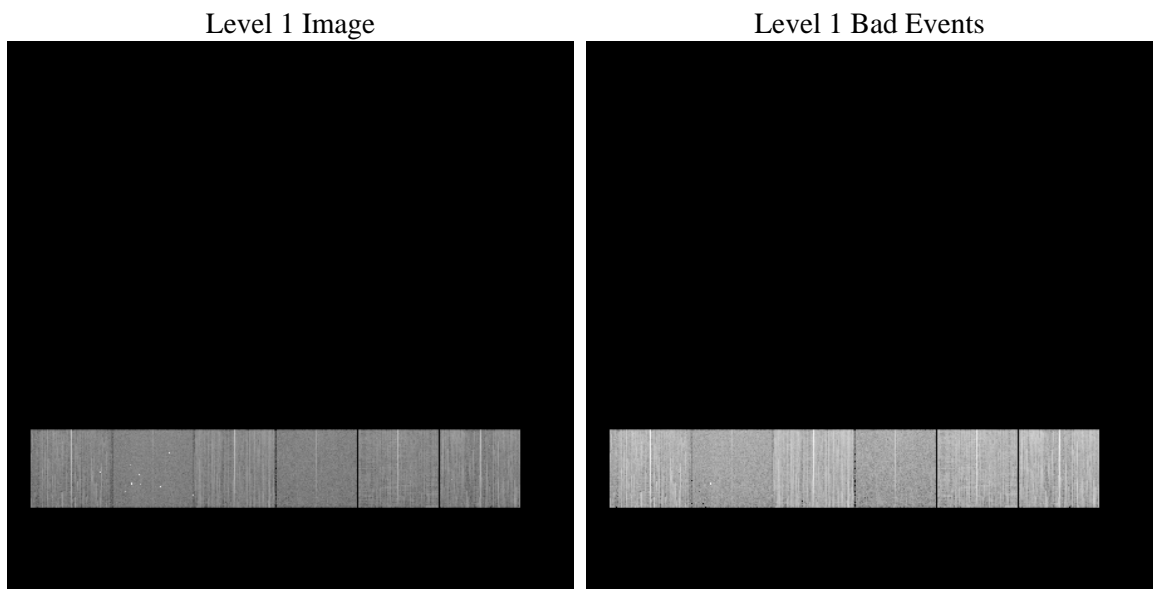
1 Front

seq_num	 	Sequence number
obs_id	52559	Observation id
title	ACIS-456789 diagnostics	Proposal title
observer	CHANDRA engineering request/realtime commanding	Principal investig
object	 	Source name
dtcycle	0	
cycle	P	events from which exps? Prim/Second/Both
ra_targ	0.0	Observer's specified target RA [deg]
dec_targ	0.0	Observer's specified target Dec [deg]
ra_nom	191.84153629241	Nominal RA [deg]
dec_nom	13.722122947641	Nominal Dec [deg]
roll_nom	261.47764051083	Nominal Roll [deg]
revision	1	Processing version of data
ontime	8252.6945489645	Sum of GTIs [s]
livetime	8148.1939614094	Livetime [s]
ontime4	8252.5714289546	Sum of GTIs [s]
ontime5	8252.6535089612	Sum of GTIs [s]
ontime6	8252.6124689579	Sum of GTIs [s]
ontime7	8252.6945489645	Sum of GTIs [s]
ontime8	8252.5303889513	Sum of GTIs [s]
ontime9	8252.7355889678	Sum of GTIs [s]
l2events	194847	Number of level 2 events

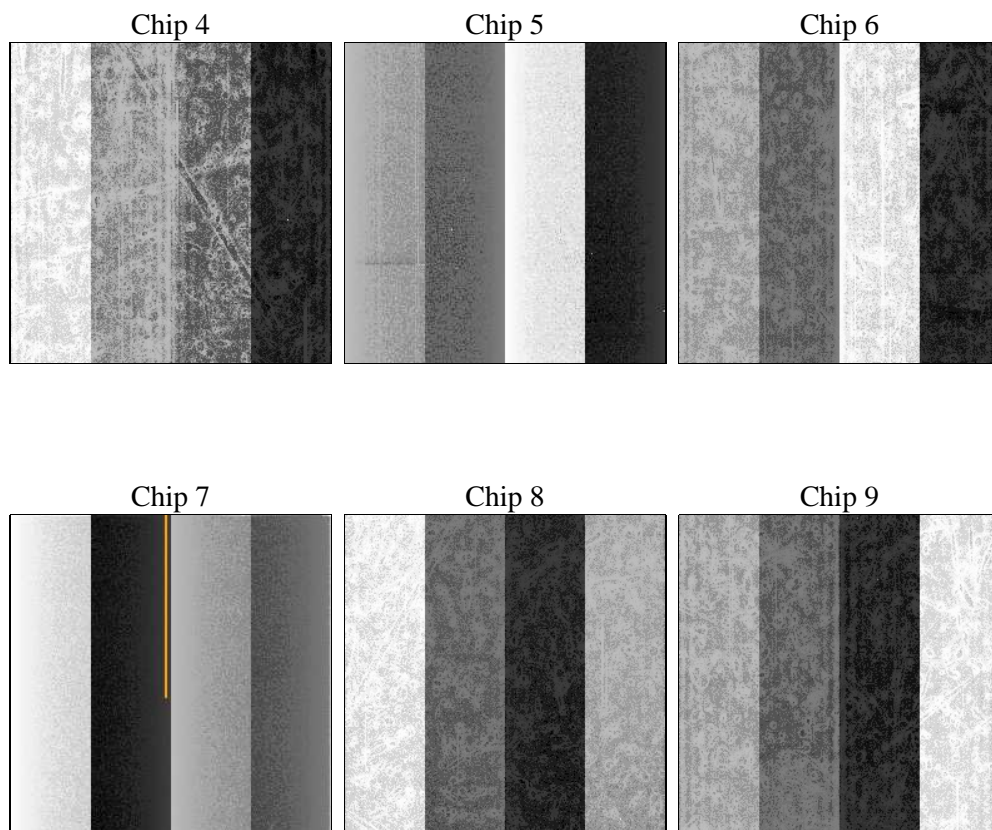
2 OBI

2.1 OBI

2.1.1 Images



2.1.2 Bias



2.1.3 Parameters

obi_num	0	Obi number	sched_exp_time	0.0	[s] Scheduled observation exposure time
ascdsver	10.2.4	Processing system revision	ontime	8252.6945489645	Sum of GTIs [s]
caldsver	4.6.2	 	ontime4	8252.5714289546	Sum of GTIs [s]
date	2014-08-11T19:13:00	Date and time of file creation	ontime5	8252.6535089612	Sum of GTIs [s]
revision	1	Processing version of data	ontime6	8252.6124689579	Sum of GTIs [s]
			ontime7	8252.6945489645	Sum of GTIs [s]
			ontime8	8252.5303889513	Sum of GTIs [s]
			ontime9	8252.7355889678	Sum of GTIs [s]
			l1events	867575	Number of level 1 events

2.1.4 Events

	ccd 4	ccd 5	ccd 6	ccd 7	ccd 8	ccd 9		ccd 4	ccd 5	ccd 6	ccd 7	ccd 8	ccd 9
level 1 events	144918	134698	161022	117303	152164	157470	grade 0 events	15684	12167	11433	6169	14902	12399
rejected events	117188	71200	135143	67881	117375	131646		10%	9%	7%	5%	9%	7%
rejected %	80%	52%	83%	57%	77%	83%	grade 1 events	87	532	57	63	74	71
								0%	0%	0%	0%	0%	0%
							grade 2 events	5100	22108	6510	12500	7713	5530
								3%	16%	4%	10%	5%	3%
							grade 3 events	1791	1687	1562	3617	2670	1660
								1%	1%	0%	3%	1%	1%
							grade 4 events	1791	1587	1586	3621	2530	1769
								1%	1%	0%	3%	1%	1%
							grade 5 events	3012	5341	2940	6972	3941	3298
								2%	3%	1%	5%	2%	2%
							grade 6 events	3471	26174	4891	23716	7107	4567
								2%	19%	3%	20%	4%	2%
							grade 7 events	113982	65102	132043	60645	113227	128176
								78%	48%	82%	51%	74%	81%

2.2 Compared Parameters

Parameter	Planned	Actual	Parameter	Planned	Actual
Instrument	ACIS	ACIS	Obspar format version number	7	7
Detector	ACIS-456789	ACIS-456789	Obspar file type	PREDICTED	ACTUAL
Grating	NONE	NONE	Obspar update status	NONE	UPDATED
Data mode	FAINT	FAINT	Number of optional ACIS chips dropped	0	0
Observation mode	SECONDARY	SECONDARY	On-chip summing requested	N	N
[deg] Pointing RA	0	191.8415362924102	Subarray requested	NONE	NONE
[deg] Pointing Dec	0	13.72212294764052	Alternating exposures requested	N	N
[deg] Pointing Roll	0.0	261.4776405108336	[s] Primary exposure time	3.2	3.2
[mm] SIM focus pos	-1.429586	-1.428180813131781			
[mm] SIM defocus	0.1037507710433287	0.1051558262725154			
[mm] SIM translation stage pos	250.455976	250.466033080201			
[mm] SIM translation stage offset	0	-0.01005468664627074			
[s] Observation start time (MET)	524114601.403173	524114600.37817			
Observation start date	2014-08-11T03:23:21	2014-08-11T03:23:20			
[s] Observation end time (MET)	524124189.253705	524124188.2287			
Observation end date	2014-08-11T06:03:09	2014-08-11T06:03:08			
Read mode	TIMED	TIMED			

2.3 Star Slots

2.4 FID Slots

A Summary

A.1 Status

V&V Scientist	Beth Sundheim
V&V Date (YYYY-MM-DD)	2014.08.11
V&V Edition	1
V&V Disposition and Status	OK
V&V Charge Time	8.2526945489645

A.2 Comments