

V&V Reference Report

L2 ASCDS Version : 10.2.4

Observation 52435 - L2 Version 1
Chandra X-Ray Center

L2 Processing Date : Sep 28 2014

Contents

1	Front	2
2	OBI	3
2.1	OBI	3
2.1.1	Images	3
2.1.2	Bias	3
2.1.3	Parameters	4
2.1.4	Events	4
2.2	Compared Parameters	5
2.3	Star Slots	6
2.4	FID Slots	6
A	Summary	7
A.1	Status	7
A.2	Comments	7

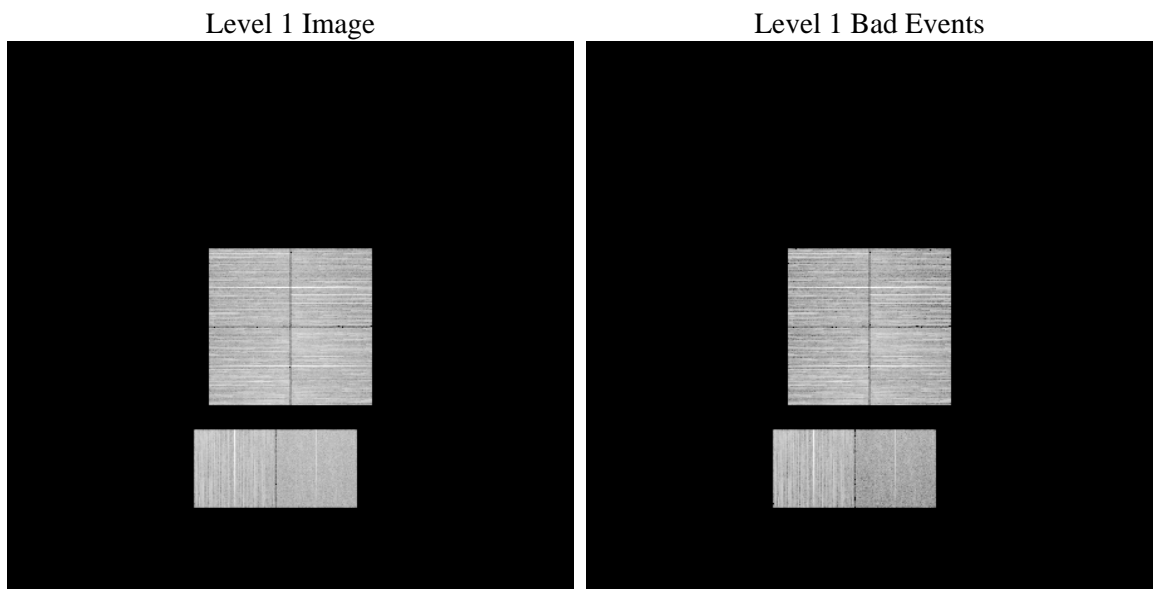
1 Front

seq_num	 	Sequence number
obs_id	52435	Observation id
title	ACIS-012367 diagnostics	Proposal title
observer	CHANDRA engineering request/realtime commanding	Principal investig
object	 	Source name
dtcycle	0	
cycle	P	events from which exps? Prim/Second/Both
ra_targ	0.0	Observer's specified target RA [deg]
dec_targ	0.0	Observer's specified target Dec [deg]
ra_nom	22.405009694304	Nominal RA [deg]
dec_nom	-15.371576255555	Nominal Dec [deg]
roll_nom	47.47296405648	Nominal Roll [deg]
revision	1	Processing version of data
ontime	8467.1999685168	Sum of GTIs [s]
livetime	8359.9831841797	Livetime [s]
ontime0	8467.1999685168	Sum of GTIs [s]
ontime1	8467.1999685168	Sum of GTIs [s]
ontime2	8467.1999685168	Sum of GTIs [s]
ontime3	8467.1999685168	Sum of GTIs [s]
ontime6	8467.1999685168	Sum of GTIs [s]
ontime7	8467.1999685168	Sum of GTIs [s]
l2events	171745	Number of level 2 events

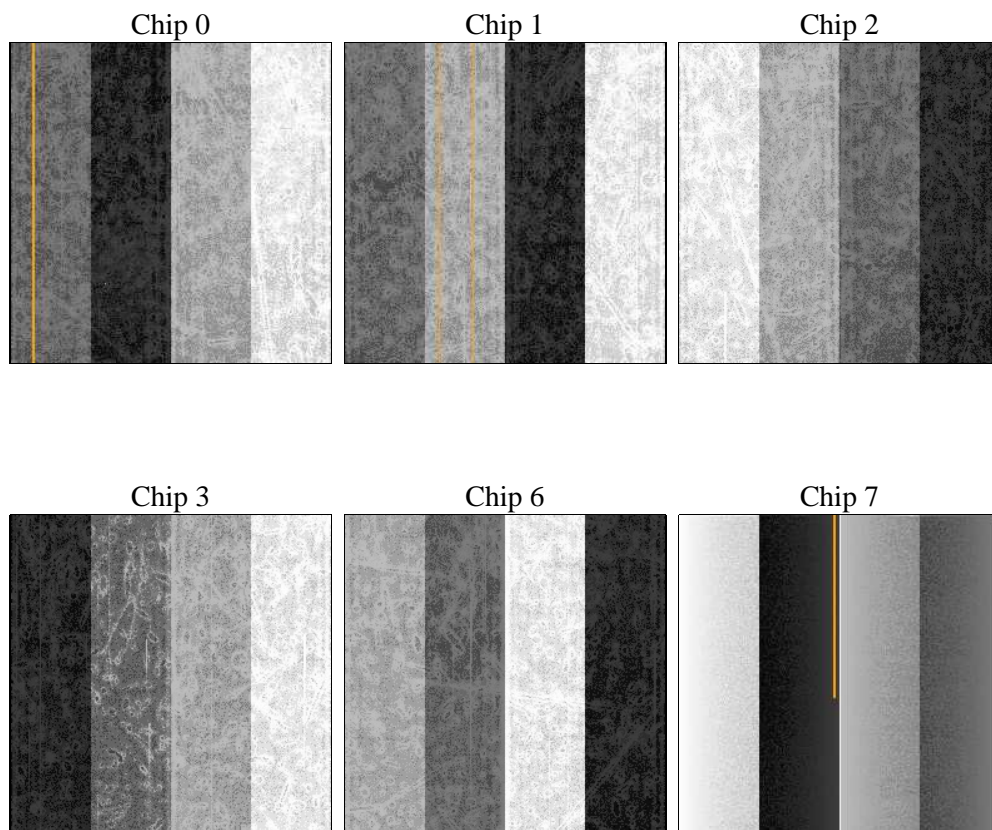
2 OBI

2.1 OBI

2.1.1 Images



2.1.2 Bias



2.1.3 Parameters

obi_num	0	Obi number	sched_exp_time	0.0	[s] Scheduled observation exposure time
ascdsver	10.2.4	Processing system revision	ontime	8467.1999685168	Sum of GTIs [s]
caldsver	4.6.3	 	ontime0	8467.1999685168	Sum of GTIs [s]
date	2014-09-28T23:14:33	Date and time of file creation	ontime1	8467.1999685168	Sum of GTIs [s]
revision	1	Processing version of data	ontime2	8467.1999685168	Sum of GTIs [s]
			ontime3	8467.1999685168	Sum of GTIs [s]
			ontime6	8467.1999685168	Sum of GTIs [s]
			ontime7	8467.1999685168	Sum of GTIs [s]
			l1events	883176	Number of level 1 events

2.1.4 Events

	ccd 0	ccd 1	ccd 2	ccd 3	ccd 6	ccd 7		ccd 0	ccd 1	ccd 2	ccd 3	ccd 6	ccd 7
level 1 events	140605	141229	157282	161583	158700	123777	grade 0 events	12762	12163	13033	13226	12557	6825
rejected events	114782	115461	131648	135566	132209	71045		9%	8%	8%	8%	7%	5%
rejected %	81%	81%	83%	83%	83%	57%	grade 1 events	49	66	72	75	63	97
								0%	0%	0%	0%	0%	0%
							grade 2 events	5360	5483	5031	5053	5506	12754
								3%	3%	3%	3%	3%	10%
							grade 3 events	1804	1850	1715	1807	1796	4250
								1%	1%	1%	1%	1%	3%
							grade 4 events	1773	1816	1821	1949	1853	4180
								1%	1%	1%	1%	1%	3%
							grade 5 events	3008	3018	2790	3333	3083	7970
								2%	2%	1%	2%	1%	6%
							grade 6 events	4124	4456	4034	3982	4779	24723
								2%	3%	2%	2%	3%	19%
							grade 7 events	111725	112377	128786	132158	129063	62978
								79%	79%	81%	81%	81%	50%

2.2 Compared Parameters

Parameter	Planned	Actual	Parameter	Planned	Actual
Instrument	ACIS	ACIS	Obspar format version number	7	7
Detector	ACIS-012367	ACIS-012367	Obspar file type	PREDICTED	ACTUAL
Grating	NONE	NONE	Obspar update status	NONE	UPDATED
Data mode	FAINT	FAINT	Number of optional ACIS chips dropped	0	0
Observation mode	SECONDARY	SECONDARY	On-chip summing requested	N	N
[deg] Pointing RA	0	22.40500969430411	Subarray requested	NONE	NONE
[deg] Pointing Dec	0	-15.37157625555479	Alternating exposures requested	N	N
[deg] Pointing Roll	0.0	47.47296405647974	[s] Primary exposure time	3.2	3.2
[mm] SIM focus pos	-1.429586	-1.428180813131781			
[mm] SIM defocus	0.1037507710433287	0.1051558262725154			
[mm] SIM translation stage pos	250.455976	250.466033080201			
[mm] SIM translation stage offset	0	-0.01005468664627074			
[s] Observation start time (MET)	528262926.283386	528262925.25839			
Observation start date	2014-09-28T03:42:06	2014-09-28T03:42:05			
[s] Observation end time (MET)	528274902.384051	528274901.35905			
Observation end date	2014-09-28T07:01:42	2014-09-28T07:01:41			
Read mode	TIMED	TIMED			

2.3 Star Slots

2.4 FID Slots

A Summary

A.1 Status

V&V Scientist	Joy Nichols
V&V Date (YYYY-MM-DD)	2014.09.29
V&V Edition	1
V&V Disposition and Status	OK
V&V Charge Time	8.4671999685168

A.2 Comments