

# V&V Reference Report

## L2 ASCDS Version : 10.2.4

Observation 52402 - L2 Version 1  
Chandra X-Ray Center

L2 Processing Date : Oct 11 2014

## Contents

<b>1</b>	<b>Front</b>	<b>2</b>
<b>2</b>	<b>OBI</b>	<b>3</b>
2.1	OBI . . . . .	3
2.1.1	Images . . . . .	3
2.1.2	Bias . . . . .	3
2.1.3	Parameters . . . . .	4
2.1.4	Events . . . . .	4
2.2	Compared Parameters . . . . .	5
2.3	Star Slots . . . . .	6
2.4	FID Slots . . . . .	6
<b>A</b>	<b>Summary</b>	<b>7</b>
A.1	Status . . . . .	7
A.2	Comments . . . . .	7

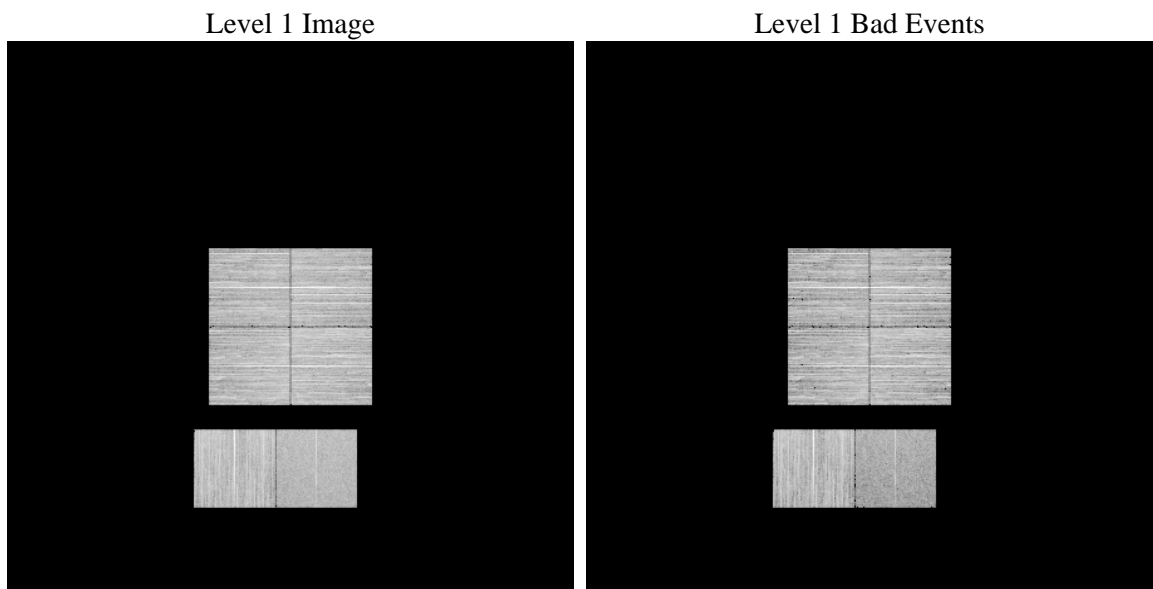
# 1 Front

seq_num	&#160	Sequence number
obs_id	52402	Observation id
title	ACIS-012367 diagnostics	Proposal title
observer	CHANDRA engineering request/realtime commanding	Principal investig
object	&#160	Source name
dtcycle	0	&#160
cycle	P	events from which exps? Prim/Second/Both
ra_targ	0.0	Observer's specified target RA [deg]
dec_targ	0.0	Observer's specified target Dec [deg]
ra_nom	28.512918712437	Nominal RA [deg]
dec_nom	-13.973993828795	Nominal Dec [deg]
roll_nom	31.497095172522	Nominal Roll [deg]
revision	1	Processing version of data
ontime	7119.0058407187	Sum of GTIs [s]
livetime	7028.8607022129	Livetime [s]
ontime0	7118.9648007154	Sum of GTIs [s]
ontime1	7118.9237607121	Sum of GTIs [s]
ontime2	7118.8827207088	Sum of GTIs [s]
ontime3	7119.046880722	Sum of GTIs [s]
ontime6	7118.8416807055	Sum of GTIs [s]
ontime7	7119.0058407187	Sum of GTIs [s]
l2events	143204	Number of level 2 events

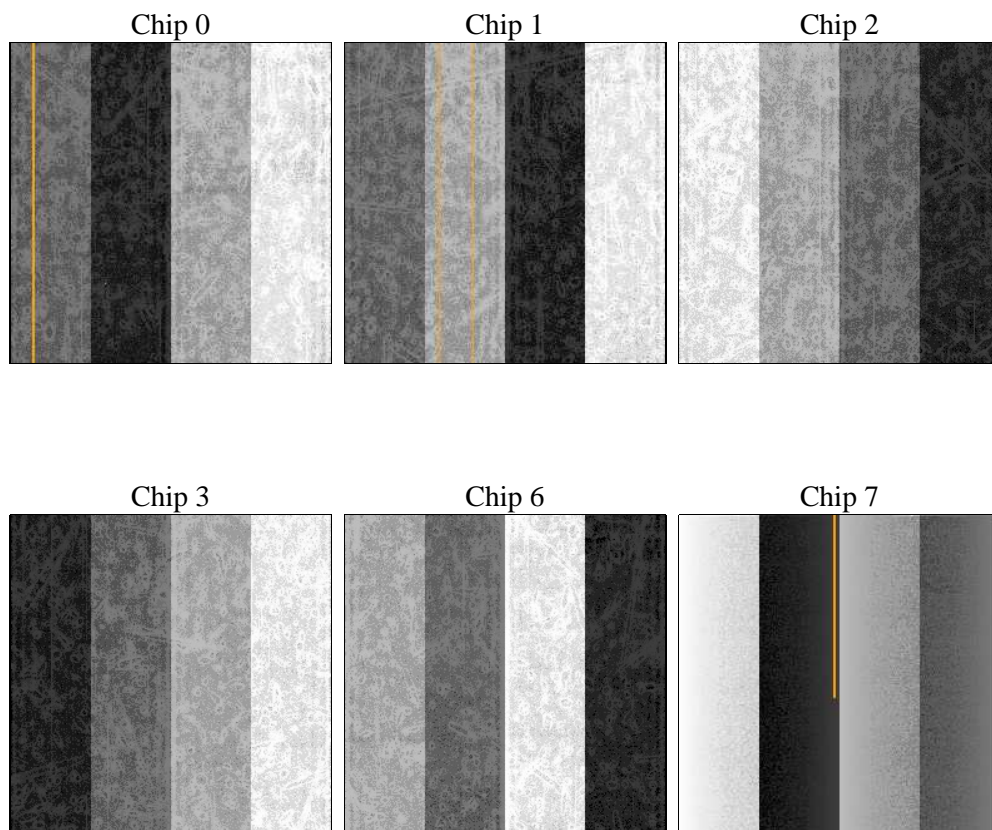
## 2 OBI

### 2.1 OBI

#### 2.1.1 Images



#### 2.1.2 Bias



### 2.1.3 Parameters

obi_num	0	Obi number	sched_exp_time	0.0	[s] Scheduled observation exposure time
ascdsver	10.2.4	Processing system revision	ontime	7119.0058407187	Sum of GTIs [s]
caldsver	4.6.3	&#160	ontime0	7118.9648007154	Sum of GTIs [s]
date	2014-10-11T18:39:17	Date and time of file creation	ontime1	7118.9237607121	Sum of GTIs [s]
revision	1	Processing version of data	ontime2	7118.8827207088	Sum of GTIs [s]
			ontime3	7119.046880722	Sum of GTIs [s]
			ontime6	7118.8416807055	Sum of GTIs [s]
			ontime7	7119.0058407187	Sum of GTIs [s]
			l1events	764135	Number of level 1 events

### 2.1.4 Events

	ccd 0	ccd 1	ccd 2	ccd 3	ccd 6	ccd 7		ccd 0	ccd 1	ccd 2	ccd 3	ccd 6	ccd 7
level 1 events	124863	130188	127828	138078	137840	105338	grade 0 events	10962	10532	11385	11336	10870	5681
rejected events	103313	108583	106339	116690	115576	61597		8%	8%	8%	8%	7%	5%
rejected %	82%	83%	83%	84%	83%	58%	grade 1 events	60	52	64	69	57	70
								0%	0%	0%	0%	0%	0%
							grade 2 events	4594	4938	4403	4337	4978	11115
								3%	3%	3%	3%	3%	10%
							grade 3 events	1574	1546	1550	1572	1564	3639
								1%	1%	1%	1%	1%	3%
							grade 4 events	1510	1439	1583	1576	1499	3441
								1%	1%	1%	1%	1%	3%
							grade 5 events	2502	2495	2351	2804	2664	6509
								2%	1%	1%	2%	1%	6%
							grade 6 events	3657	3896	3335	3315	4133	21404
								2%	2%	2%	2%	2%	20%
							grade 7 events	100004	105290	103157	113069	112075	53479
								80%	80%	80%	81%	81%	50%

## 2.2 Compared Parameters

Parameter	Planned	Actual
Instrument	ACIS	ACIS
Detector	ACIS-012367	ACIS-012367
Grating	NONE	NONE
Data mode	FAINT	FAINT
Observation mode	SECONDARY	SECONDARY
[deg] Pointing RA	0	28.51291871243745
[deg] Pointing Dec	0	-13.97399382879451
[deg] Pointing Roll	0.0	31.49709517252221
SIM focus pos (mm)	-1.4281808131	-1.4281808131
[mm] SIM defocus	0.1051557500557434	0.1051557500557434
SIM translation stage pos (mm)	250.4660330802	250.4660330802
[mm] SIM translation stage offset	-0.01005726120527584	-0.01005726120527584
[s] Observation start time (MET)	529370996.444957	529370996.444957
Observation start date	2014-10-10T23:29:56	2014-10-10T23:29:56
[s] Observation end time (MET)	529378753.156608	529378753.156608
Observation end date	2014-10-11T01:39:13	2014-10-11T01:39:13
Read mode	TIMED	TIMED

Parameter	Planned	Actual
Obspar format version number	7	7
Obspar file type	PREDICTED	ACTUAL
Obspar update status	OVERRIDE	OVERRIDE
Number of optional ACIS chips dropped	0	0
On-chip summing requested	N	N
Subarray requested	NONE	NONE
Alternating exposures requested	N	N
[s] Primary exposure time	3.2	3.2

## **2.3 Star Slots**

## **2.4 FID Slots**

## A Summary

### A.1 Status

V&V Scientist	Beth Sundheim
V&V Date (YYYY-MM-DD)	2014.10.11
V&V Edition	1
V&V Disposition and Status	OK
V&V Charge Time	7.1190058407187

### A.2 Comments