

V&V Reference Report

L2 ASCDS Version : 10.3

Observation 52316 - L2 Version 1
Chandra X-Ray Center

L2 Processing Date : Nov 17 2014

Contents

1	Front	2
2	OBI	3
2.1	OBI	3
2.1.1	Images	3
2.1.2	Bias	3
2.1.3	Parameters	4
2.1.4	Events	4
2.2	Compared Parameters	5
2.3	Star Slots	6
2.4	FID Slots	6
A	Summary	7
A.1	Status	7
A.2	Comments	7

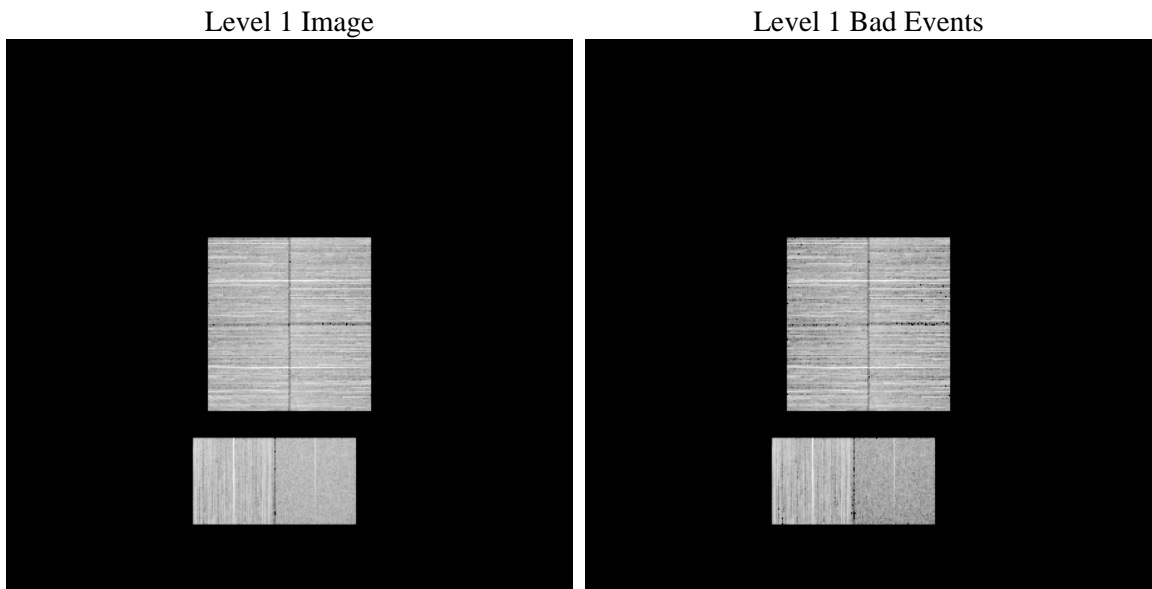
1 Front

seq_num	 	Sequence number
obs_id	52316	Observation id
title	ACIS-012367 diagnostics	Proposal title
observer	CHANDRA engineering request/realtime commanding	Principal investig
object	 	Source name
dtcycle	0	
cycle	P	events from which exps? Prim/Second/Both
ra_targ	0.0	Observer's specified target RA [deg]
dec_targ	0.0	Observer's specified target Dec [deg]
ra_nom	65.9811225157	Nominal RA [deg]
dec_nom	26.014951906006	Nominal Dec [deg]
roll_nom	116.11321578057	Nominal Roll [deg]
revision	1	Processing version of data
ontime	6089.5999773741	Sum of GTIs [s]
livetime	6012.4897957437	Livetime [s]
ontime0	6089.5999773741	Sum of GTIs [s]
ontime1	6089.5999773741	Sum of GTIs [s]
ontime2	6089.5999773741	Sum of GTIs [s]
ontime3	6089.5999773741	Sum of GTIs [s]
ontime6	6089.5980221033	Sum of GTIs [s]
ontime7	6089.5999773741	Sum of GTIs [s]
l2events	128449	Number of level 2 events

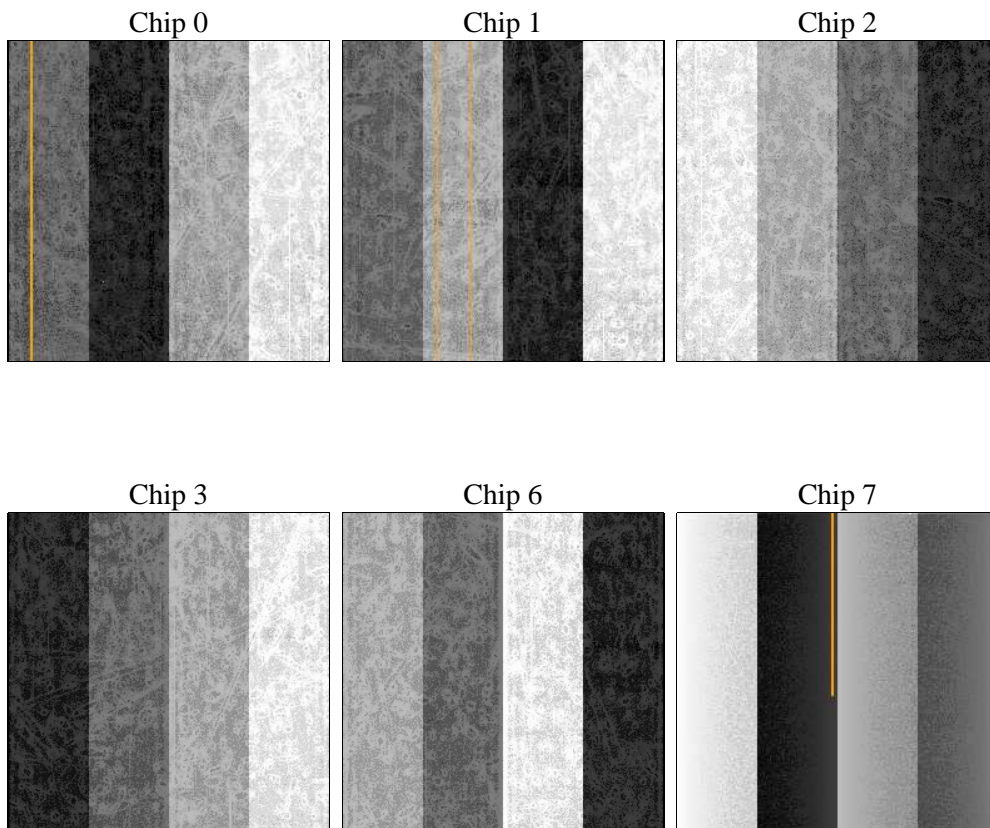
2 OBI

2.1 OBI

2.1.1 Images



2.1.2 Bias



2.1.3 Parameters

obi_num	0	Obi number	sched_exp_time	0.0	[s] Scheduled observation exposure time
ascdsver	10.3	Processing system revision	ontime	6089.5999773741	Sum of GTIs [s]
caldsver	4.6.4	 	ontime0	6089.5999773741	Sum of GTIs [s]
date	2014-11-17T18:40:37	Date and time of file creation	ontime1	6089.5999773741	Sum of GTIs [s]
revision	1	Processing version of data	ontime2	6089.5999773741	Sum of GTIs [s]
			ontime3	6089.5999773741	Sum of GTIs [s]
			ontime6	6089.5980221033	Sum of GTIs [s]
			ontime7	6089.5999773741	Sum of GTIs [s]
			l1events	661407	Number of level 1 events

2.1.4 Events

	ccd 0	ccd 1	ccd 2	ccd 3	ccd 6	ccd 7		ccd 0	ccd 1	ccd 2	ccd 3	ccd 6	ccd 7
level 1 events	105349	111383	111070	117988	125049	90568	grade 0 events	9109	9150	9598	9735	9593	5245
rejected events	86419	92050	92045	98809	104768	51080		8%	8%	8%	8%	7%	5%
rejected %	82%	82%	82%	83%	83%	56%	grade 1 events	47	43	45	73	48	75
								0%	0%	0%	0%	0%	0%
							grade 2 events	3995	4247	3702	3685	4263	9620
								3%	3%	3%	3%	3%	10%
							grade 3 events	1403	1298	1324	1339	1386	3273
								1%	1%	1%	1%	1%	3%
							grade 4 events	1243	1278	1337	1361	1420	3132
								1%	1%	1%	1%	1%	3%
							grade 5 events	2250	2139	2123	2422	2360	5815
								2%	1%	1%	2%	1%	6%
							grade 6 events	3180	3360	3064	3059	3619	18218
								3%	3%	2%	2%	2%	20%
							grade 7 events	84122	89868	89877	96314	102360	45190
								79%	80%	80%	81%	81%	49%

2.2 Compared Parameters

Parameter	Planned	Actual	Parameter	Planned	Actual
Instrument	ACIS	ACIS	Obspar format version number	7	7
Detector	ACIS-012367	ACIS-012367	Obspar file type	PREDICTED	ACTUAL
Grating	NONE	NONE	Obspar update status	NONE	UPDATED
Data mode	FAINT	FAINT	Number of optional ACIS chips dropped	0	0
Observation mode	SECONDARY	SECONDARY	On-chip summing requested	N	N
[deg] Pointing RA	0	65.98112251570006	Subarray requested	NONE	NONE
[deg] Pointing Dec	0	26.01495190600619	Alternating exposures requested	N	N
[deg] Pointing Roll	0.0	116.1132157805672	[s] Primary exposure time	3.2	3.2
[mm] SIM focus pos	-1.429586	-1.428180813131781			
[mm] SIM defocus	0.1037507710433287	0.1051558262725154			
[mm] SIM translation stage pos	250.455976	250.466033080201			
[mm] SIM translation stage offset	0	-0.01005468664627074			
[s] Observation start time (MET)	532570874.42289	532570873.39789			
Observation start date	2014-11-17T00:21:14	2014-11-17T00:21:13			
[s] Observation end time (MET)	532586714.773772	532586713.74877			
Observation end date	2014-11-17T04:45:15	2014-11-17T04:45:13			
Read mode	TIMED	TIMED			

2.3 Star Slots

2.4 FID Slots

A Summary

A.1 Status

V&V Scientist	Jen Lauer
V&V Date (YYYY-MM-DD)	2014.11.17
V&V Edition	1
V&V Disposition and Status	OK
V&V Charge Time	6.0895999773741

A.2 Comments