

V&V Reference Report

L2 ASCDS Version : 10.3

Observation 52304 - L2 Version 1
Chandra X-Ray Center

L2 Processing Date : Nov 20 2014

Contents

1	Front	2
2	OBI	3
2.1	OBI	3
2.1.1	Images	3
2.1.2	Bias	3
2.1.3	Parameters	4
2.1.4	Events	4
2.2	Compared Parameters	5
2.3	Star Slots	6
2.4	FID Slots	6
A	Summary	7
A.1	Status	7
A.2	Comments	7

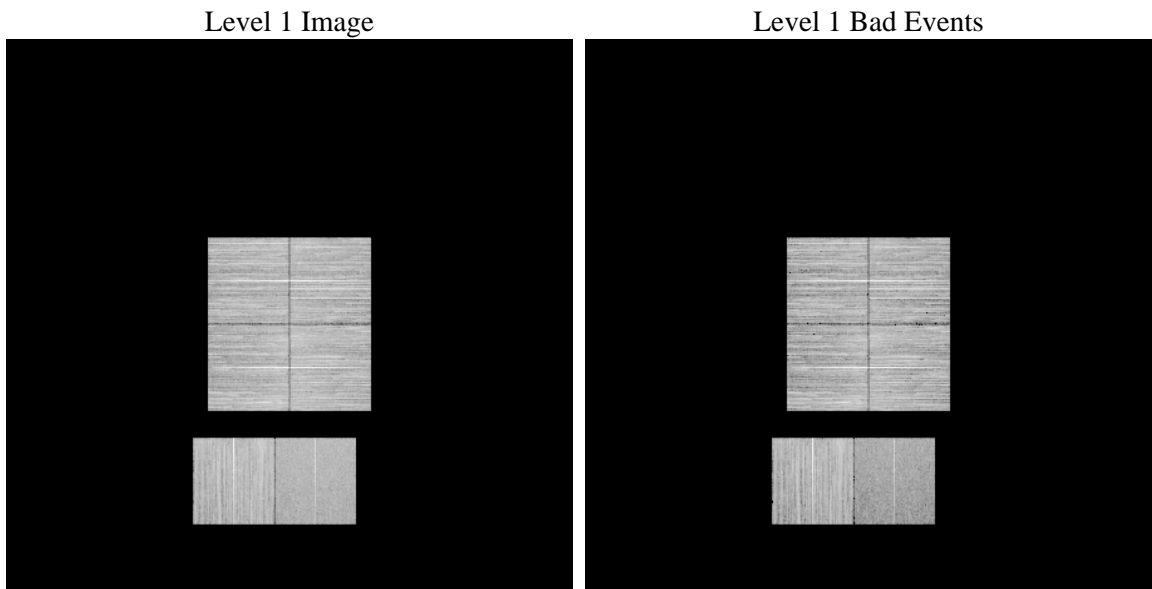
1 Front

seq_num	 	Sequence number
obs_id	52304	Observation id
title	ACIS-012367 diagnostics	Proposal title
observer	CHANDRA engineering request/realtime commanding	Principal investig
object	 	Source name
dtcycle	0	
cycle	P	events from which exps? Prim/Second/Both
ra_targ	0.0	Observer's specified target RA [deg]
dec_targ	0.0	Observer's specified target Dec [deg]
ra_nom	242.15062791997	Nominal RA [deg]
dec_nom	-23.124419158732	Nominal Dec [deg]
roll_nom	193.81513163658	Nominal Roll [deg]
revision	1	Processing version of data
ontime	8435.199968636	Sum of GTIs [s]
livetime	8328.3883875655	Livetime [s]
ontime0	8435.199968636	Sum of GTIs [s]
ontime1	8435.199968636	Sum of GTIs [s]
ontime2	8435.199968636	Sum of GTIs [s]
ontime3	8435.199968636	Sum of GTIs [s]
ontime6	8435.199968636	Sum of GTIs [s]
ontime7	8435.199968636	Sum of GTIs [s]
l2events	172618	Number of level 2 events

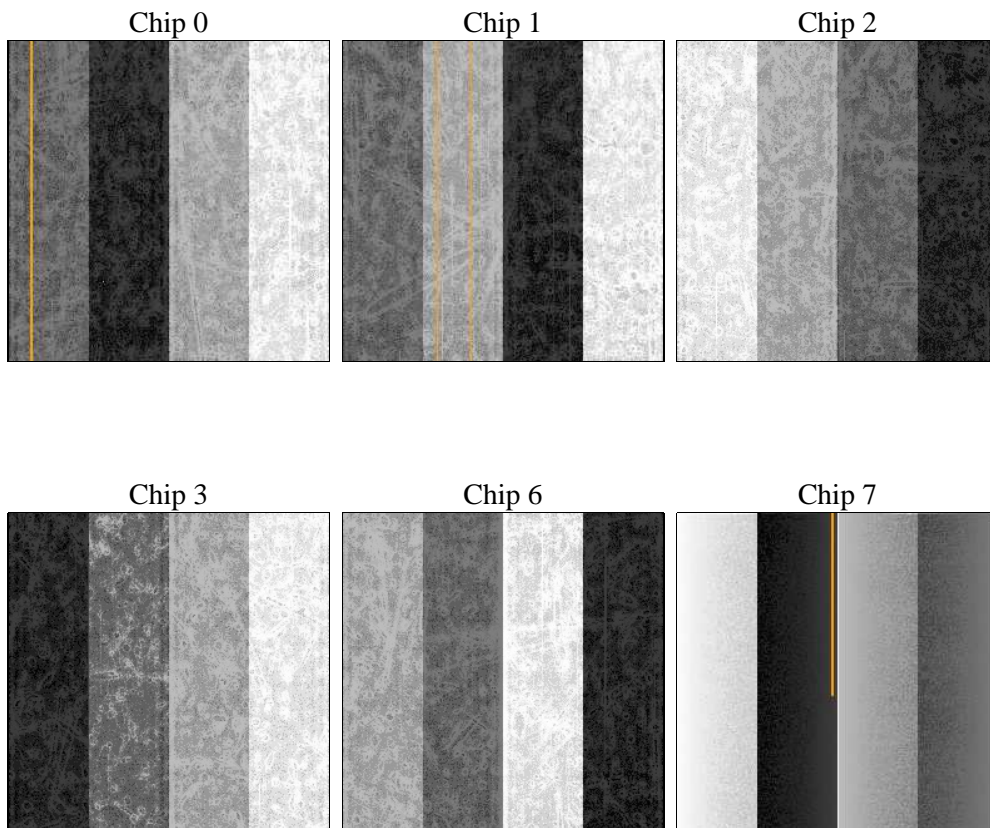
2 OBI

2.1 OBI

2.1.1 Images



2.1.2 Bias



2.1.3 Parameters

obi_num	0	Obi number	sched_exp_time	0.0	[s] Scheduled observation exposure time
ascdsver	10.3	Processing system revision	ontime	8435.199968636	Sum of GTIs [s]
caldsver	4.6.4	 	ontime0	8435.199968636	Sum of GTIs [s]
date	2014-11-20T18:04:38	Date and time of file creation	ontime1	8435.199968636	Sum of GTIs [s]
revision	1	Processing version of data	ontime2	8435.199968636	Sum of GTIs [s]
			ontime3	8435.199968636	Sum of GTIs [s]
			ontime6	8435.199968636	Sum of GTIs [s]
			ontime7	8435.199968636	Sum of GTIs [s]
			l1events	959148	Number of level 1 events

2.1.4 Events

	ccd 0	ccd 1	ccd 2	ccd 3	ccd 6	ccd 7		ccd 0	ccd 1	ccd 2	ccd 3	ccd 6	ccd 7
level 1 events	161815	165258	160171	174200	166375	131329	grade 0 events	12365	11745	13019	12810	12358	6800
rejected events	136457	139637	134562	148727	140073	76164		7%	7%	8%	7%	7%	5%
rejected %	84%	84%	84%	85%	84%	57%	grade 1 events	76	64	95	87	68	92
								0%	0%	0%	0%	0%	0%
							grade 2 events	5430	5945	5127	5066	5750	13704
								3%	3%	3%	2%	3%	10%
							grade 3 events	1819	1746	1806	1788	1730	4352
								1%	1%	1%	1%	1%	3%
							grade 4 events	1690	1717	1802	1805	1774	4280
								1%	1%	1%	1%	1%	3%
							grade 5 events	3143	3123	3026	3471	3143	8198
								1%	1%	1%	1%	1%	6%
							grade 6 events	4133	4556	3961	4106	4790	26239
								2%	2%	2%	2%	2%	19%
							grade 7 events	133159	136362	131335	145067	136762	67664
								82%	82%	81%	83%	82%	51%

2.2 Compared Parameters

Parameter	Planned	Actual
Instrument	ACIS	ACIS
Detector	ACIS-012367	ACIS-012367
Grating	NONE	NONE
Data mode	FAINT	FAINT
Observation mode	SECONDARY	SECONDARY
[deg] Pointing RA	0	242.1506279199745
[deg] Pointing Dec	0	-23.1244191587319
[deg] Pointing Roll	0.0	193.8151316365849
SIM focus pos (mm)	-1.4281808131	-1.4281808131
[mm] SIM defocus	0.1051557500557434	0.1051557500557434
SIM translation stage pos (mm)	250.4660330802	250.4660330802
[mm] SIM translation stage offset	-0.01005726120527584	-0.01005726120527584
[s] Observation start time (MET)	532835021.037591	532835021.037591
Observation start date	2014-11-20T01:43:41	2014-11-20T01:43:41
[s] Observation end time (MET)	532845019.854167	532845019.854167
Observation end date	2014-11-20T04:30:20	2014-11-20T04:30:19
Read mode	TIMED	TIMED

Parameter	Planned	Actual
Obspar format version number	7	7
Obspar file type	PREDICTED	ACTUAL
Obspar update status	OVERRIDE	OVERRIDE
Number of optional ACIS chips dropped	0	0
On-chip summing requested	N	N
Subarray requested	NONE	NONE
Alternating exposures requested	N	N
[s] Primary exposure time	3.2	3.2

2.3 Star Slots

2.4 FID Slots

A Summary

A.1 Status

V&V Scientist	Jen Lauer
V&V Date (YYYY-MM-DD)	2014.11.21
V&V Edition	1
V&V Disposition and Status	OK
V&V Charge Time	8.435199968636

A.2 Comments