

# V&V Reference Report

## L2 ASCDS Version : 10.3

Observation 52294 - L2 Version 1  
Chandra X-Ray Center

L2 Processing Date : Nov 25 2014

## Contents

<b>1</b>	<b>Front</b>	<b>2</b>
<b>2</b>	<b>OBI</b>	<b>3</b>
2.1	OBI . . . . .	3
2.1.1	Images . . . . .	3
2.1.2	Bias . . . . .	3
2.1.3	Parameters . . . . .	4
2.1.4	Events . . . . .	4
2.2	Compared Parameters . . . . .	5
2.3	Star Slots . . . . .	6
2.4	FID Slots . . . . .	6
<b>A</b>	<b>Summary</b>	<b>7</b>
A.1	Status . . . . .	7
A.2	Comments . . . . .	7

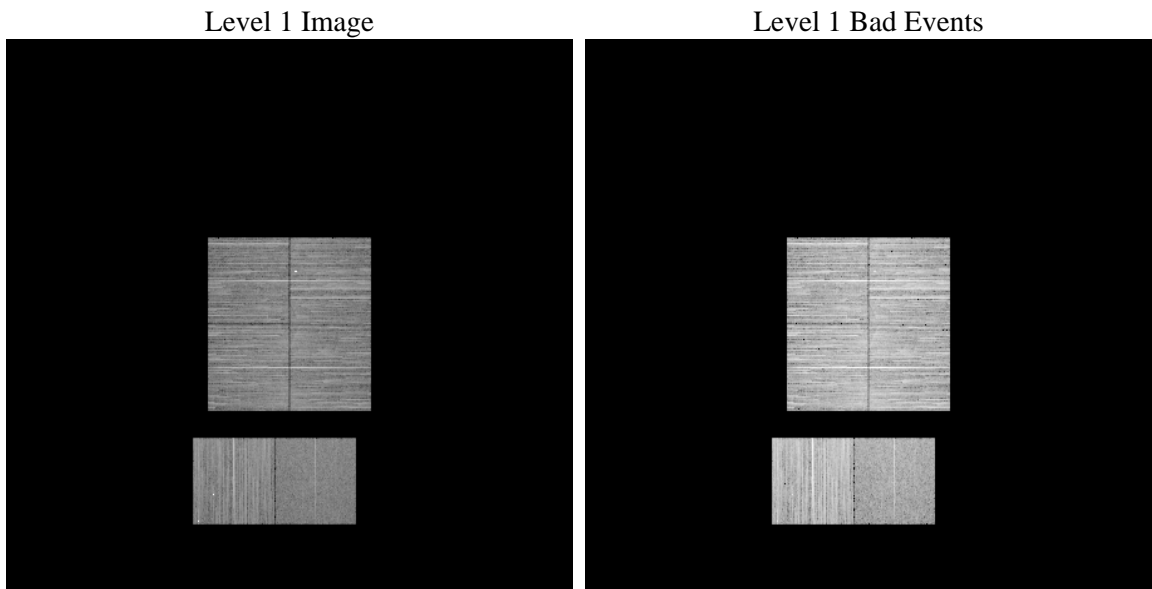
# 1 Front

seq_num	&#160	Sequence number
obs_id	52294	Observation id
title	ACIS-012367 diagnostics	Proposal title
observer	CHANDRA engineering request/realtime commanding	Principal investig
object	&#160	Source name
dtcycle	0	&#160
cycle	P	events from which exps? Prim/Second/Both
ra_targ	0.0	Observer's specified target RA [deg]
dec_targ	0.0	Observer's specified target Dec [deg]
ra_nom	44.718127209533	Nominal RA [deg]
dec_nom	39.367263243531	Nominal Dec [deg]
roll_nom	226.770376533	Nominal Roll [deg]
revision	1	Processing version of data
ontime	6408.9304317832	Sum of GTIs [s]
livetime	6327.7766956614	Livetime [s]
ontime0	6408.8893917799	Sum of GTIs [s]
ontime1	6408.8483517766	Sum of GTIs [s]
ontime2	6408.8073117733	Sum of GTIs [s]
ontime3	6408.9714717865	Sum of GTIs [s]
ontime6	6408.76627177	Sum of GTIs [s]
ontime7	6408.9304317832	Sum of GTIs [s]
l2events	126921	Number of level 2 events

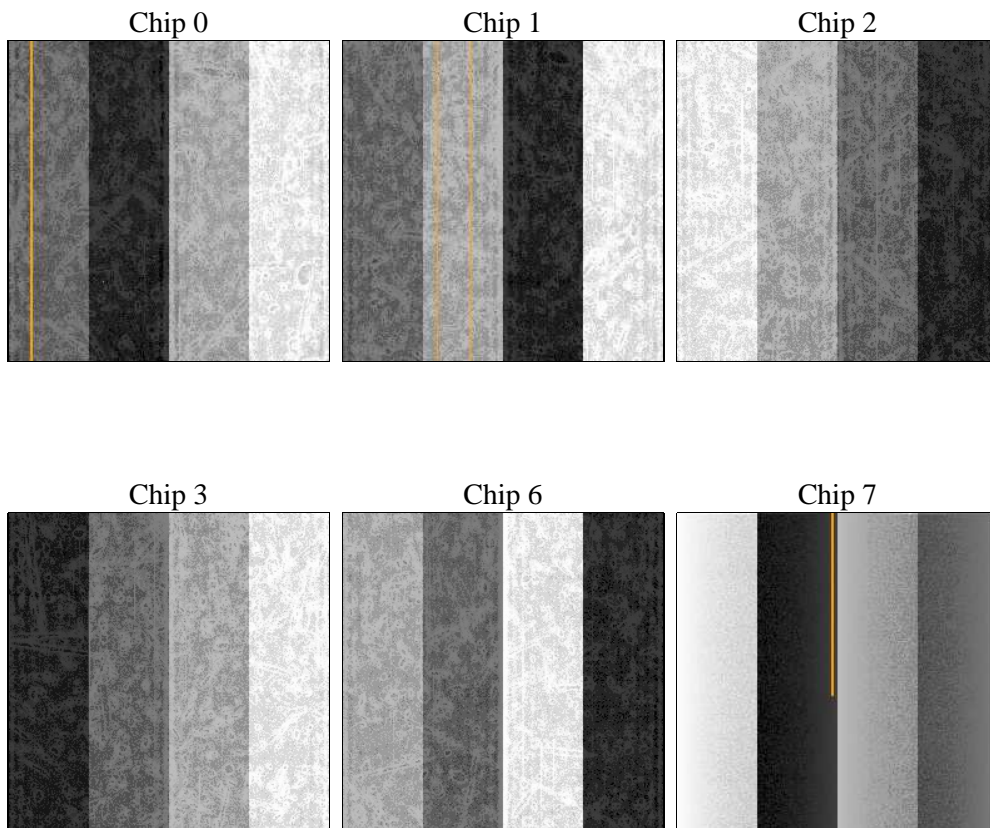
## 2 OBI

### 2.1 OBI

#### 2.1.1 Images



#### 2.1.2 Bias



### 2.1.3 Parameters

obi_num	0	Obi number	sched_exp_time	0.0	[s] Scheduled observation exposure time
ascdsver	10.3	Processing system revision	ontime	6408.9304317832	Sum of GTIs [s]
caldsver	4.6.4	&#160	ontime0	6408.8893917799	Sum of GTIs [s]
date	2014-11-25T05:16:15	Date and time of file creation	ontime1	6408.8483517766	Sum of GTIs [s]
revision	1	Processing version of data	ontime2	6408.8073117733	Sum of GTIs [s]
			ontime3	6408.9714717865	Sum of GTIs [s]
			ontime6	6408.76627177	Sum of GTIs [s]
			ontime7	6408.9304317832	Sum of GTIs [s]
			l1events	712628	Number of level 1 events

### 2.1.4 Events

	ccd 0	ccd 1	ccd 2	ccd 3	ccd 6	ccd 7		ccd 0	ccd 1	ccd 2	ccd 3	ccd 6	ccd 7
level 1 events	110009	129007	124421	120377	132398	96416	grade 0 events	9355	11079	9835	9777	13495	5036
rejected events	91389	106108	105501	101460	108988	56839		8%	8%	7%	8%	10%	5%
rejected %	83%	82%	84%	84%	82%	58%	grade 1 events	48	64	54	69	74	78
								0%	0%	0%	0%	0%	0%
							grade 2 events	3937	6354	3888	3854	4335	9953
								3%	4%	3%	3%	3%	10%
							grade 3 events	1374	1315	1398	1343	1258	3112
								1%	1%	1%	1%	0%	3%
							grade 4 events	1312	1324	1338	1416	1300	3130
								1%	1%	1%	1%	0%	3%
							grade 5 events	2362	2394	2193	2640	2503	6046
								2%	1%	1%	2%	1%	6%
							grade 6 events	3108	3407	2933	3008	3603	19364
								2%	2%	2%	2%	2%	20%
							grade 7 events	88513	103070	102782	98270	105830	49697
								80%	79%	82%	81%	79%	51%

## 2.2 Compared Parameters

Parameter	Planned	Actual	Parameter	Planned	Actual
Instrument	ACIS	ACIS	Obspar format version number	7	7
Detector	ACIS-012367	ACIS-012367	Obspar file type	PREDICTED	ACTUAL
Grating	NONE	NONE	Obspar update status	OVERRIDE	OVERRIDE
Data mode	FAINT	FAINT	Number of optional ACIS chips dropped	0	0
Observation mode	SECONDARY	SECONDARY	On-chip summing requested	N	N
[deg] Pointing RA	0	44.71812720953273	Subarray requested	NONE	NONE
[deg] Pointing Dec	0	39.36726324353125	Alternating exposures requested	N	N
[deg] Pointing Roll	0.0	226.7703765330024	[s] Primary exposure time	3.2	3.2
SIM focus pos (mm)	-1.4281808131	-1.4281808131			
[mm] SIM defocus	0.1051557500557434	0.1051557500557434			
SIM translation stage pos (mm)	250.4635187649	250.4635187649			
[mm] SIM translation stage offset	-0.007542945905271381	-0.007542945905271381			
[s] Observation start time (MET)	533255836.861015	533255836.861015			
Observation start date	2014-11-24T22:37:17	2014-11-24T22:37:16			
[s] Observation end time (MET)	533263666.362311	533263666.362311			
Observation end date	2014-11-25T00:47:46	2014-11-25T00:47:46			
Read mode	TIMED	TIMED			

## **2.3 Star Slots**

## **2.4 FID Slots**

## **A Summary**

### **A.1 Status**

V&V Scientist	Jen Lauer
V&V Date (YYYY-MM-DD)	2014.11.25
V&V Edition	1
V&V Disposition and Status	OK
V&V Charge Time	6.4089304317832

### **A.2 Comments**