

V&V Reference Report

L2 ASCDS Version : 10

Observation 53653 - L2 Version 1
Chandra X-Ray Center

L2 Processing Date : Jun 6 2013

Contents

1	Front	2
2	OBI	3
2.1	OBI	3
2.1.1	Images	3
2.1.2	Bias	3
2.1.3	Parameters	4
2.1.4	Events	4
2.2	Compared Parameters	5
2.3	Star Slots	6
2.4	FID Slots	6
A	Summary	7
A.1	Status	7
A.2	Comments	7

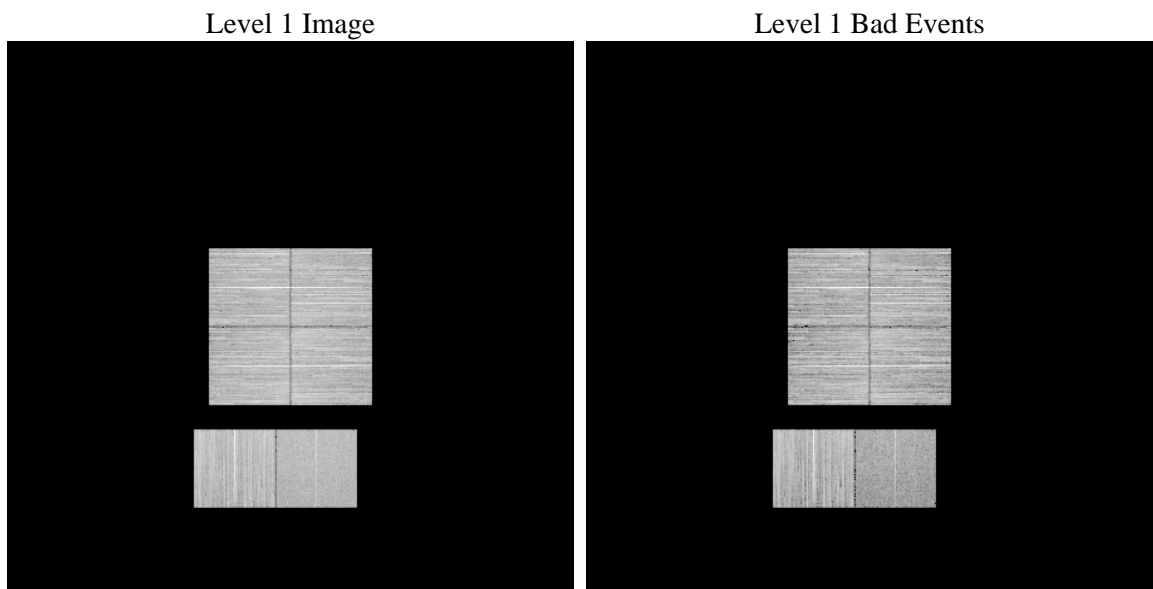
1 Front

seq_num	 	Sequence number
obs_id	53653	Observation id
title	ACIS-012367 diagnostics	Proposal title
observer	CHANDRA engineering request/realtime commanding	Principal investig
object	 	Source name
dtcycle	0	
cycle	P	events from which exps? Prim/Second/Both
ra_targ	0.0	Observer's specified target RA [deg]
dec_targ	0.0	Observer's specified target Dec [deg]
ra_nom	20.365139316016	Nominal RA [deg]
dec_nom	-9.6335508335615	Nominal Dec [deg]
roll_nom	122.38747626436	Nominal Roll [deg]
revision	1	Processing version of data
ontime	8293.1892108321	Sum of GTIs [s]
livetime	8188.1758554855	Livetime [s]
ontime0	8293.1481708288	Sum of GTIs [s]
ontime1	8293.1071308255	Sum of GTIs [s]
ontime2	8293.0660908222	Sum of GTIs [s]
ontime3	8293.2302508354	Sum of GTIs [s]
ontime6	8293.0250508189	Sum of GTIs [s]
ontime7	8293.1892108321	Sum of GTIs [s]
l2events	210777	Number of level 2 events

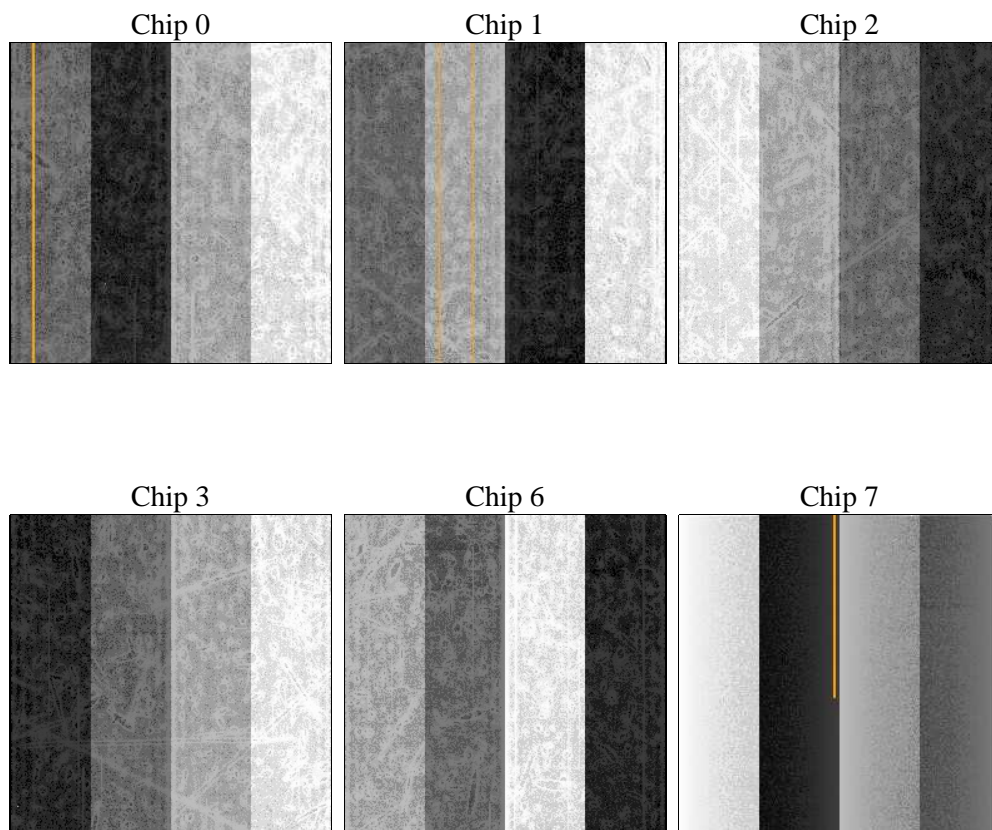
2 OBI

2.1 OBI

2.1.1 Images



2.1.2 Bias



2.1.3 Parameters

obi_num	0	Obi number	sched_exp_time	0.0	[s] Scheduled observation exposure time
ascdsver	10	Processing system revision	ontime	8293.1892108321	Sum of GTIs [s]
caldsver	4.5.6	 	ontime0	8293.1481708288	Sum of GTIs [s]
date	2013-06-06T21:28:00	Date and time of file creation	ontime1	8293.1071308255	Sum of GTIs [s]
revision	1	Processing version of data	ontime2	8293.0660908222	Sum of GTIs [s]
			ontime3	8293.2302508354	Sum of GTIs [s]
			ontime6	8293.0250508189	Sum of GTIs [s]
			ontime7	8293.1892108321	Sum of GTIs [s]
			l1events	869049	Number of level 1 events

2.1.4 Events

	ccd 0	ccd 1	ccd 2	ccd 3	ccd 6	ccd 7		ccd 0	ccd 1	ccd 2	ccd 3	ccd 6	ccd 7
level 1 events	148128	151262	148504	146509	150749	123897	grade 0 events	16766	16200	17336	17097	17022	8845
rejected events	115220	118582	115530	113931	116717	65604		11%	10%	11%	11%	11%	7%
rejected %	77%	78%	77%	77%	77%	52%	grade 1 events	79	78	93	91	65	81
								0%	0%	0%	0%	0%	0%
							grade 2 events	6512	6840	6165	6038	6832	14066
								4%	4%	4%	4%	4%	11%
							grade 3 events	2244	2051	2232	2254	2256	4930
								1%	1%	1%	1%	1%	3%
							grade 4 events	2131	2198	2305	2259	2206	4743
								1%	1%	1%	1%	1%	3%
							grade 5 events	2790	2778	2588	3026	2966	7395
								1%	1%	1%	2%	1%	5%
							grade 6 events	5255	5391	4936	4930	5716	25709
								3%	3%	3%	3%	3%	20%
							grade 7 events	112351	115726	112849	110814	113686	58128
								75%	76%	75%	75%	75%	46%

2.2 Compared Parameters

Parameter	Planned	Actual	Parameter	Planned	Actual
Instrument	ACIS	ACIS	Obspar format version number	7	7
Detector	ACIS-012367	ACIS-012367	Obspar file type	PREDICTED	ACTUAL
Grating	NONE	NONE	Obspar update status	NONE	UPDATED
Data mode	FAINT	FAINT	Number of optional ACIS chips dropped	0	0
Observation mode	SECONDARY	SECONDARY	On-chip summing requested	N	N
[deg] Pointing RA	0	20.36513931601604	Subarray requested	NONE	NONE
[deg] Pointing Dec	0	-9.633550833561545	Alternating exposures requested	N	N
[deg] Pointing Roll	0.0	122.3874762643609	[s] Primary exposure time	3.2	3.2
[mm] SIM focus pos	-1.429586	-1.428180813131781			
[mm] SIM defocus	0.1037507710433287	0.1051558262725154			
[mm] SIM translation stage pos	250.455976	250.466033080201			
[mm] SIM translation stage offset	0	-0.01005468664627074			
[s] Observation start time (MET)	486871078.808186	486871077.78319			
Observation start date	2013-06-06T01:57:59	2013-06-06T01:57:57			
[s] Observation end time (MET)	486881669.10876	486881668.08376			
Observation end date	2013-06-06T04:54:29	2013-06-06T04:54:28			
Read mode	TIMED	TIMED			

2.3 Star Slots

2.4 FID Slots

A Summary

A.1 Status

V&V Scientist	Joy Nichols
V&V Date (YYYY-MM-DD)	2013.06.07
V&V Edition	1
V&V Disposition and Status	OK
V&V Charge Time	8.2931892108321

A.2 Comments