

V&V Reference Report

L2 ASCDS Version : 10

Observation 53644 - L2 Version 1
Chandra X-Ray Center

L2 Processing Date : Jun 9 2013

Contents

1	Front	2
2	OBI	3
2.1	OBI	3
2.1.1	Images	3
2.1.2	Bias	3
2.1.3	Parameters	4
2.1.4	Events	4
2.2	Compared Parameters	5
2.3	Star Slots	6
2.4	FID Slots	6
A	Summary	7
A.1	Status	7
A.2	Comments	7

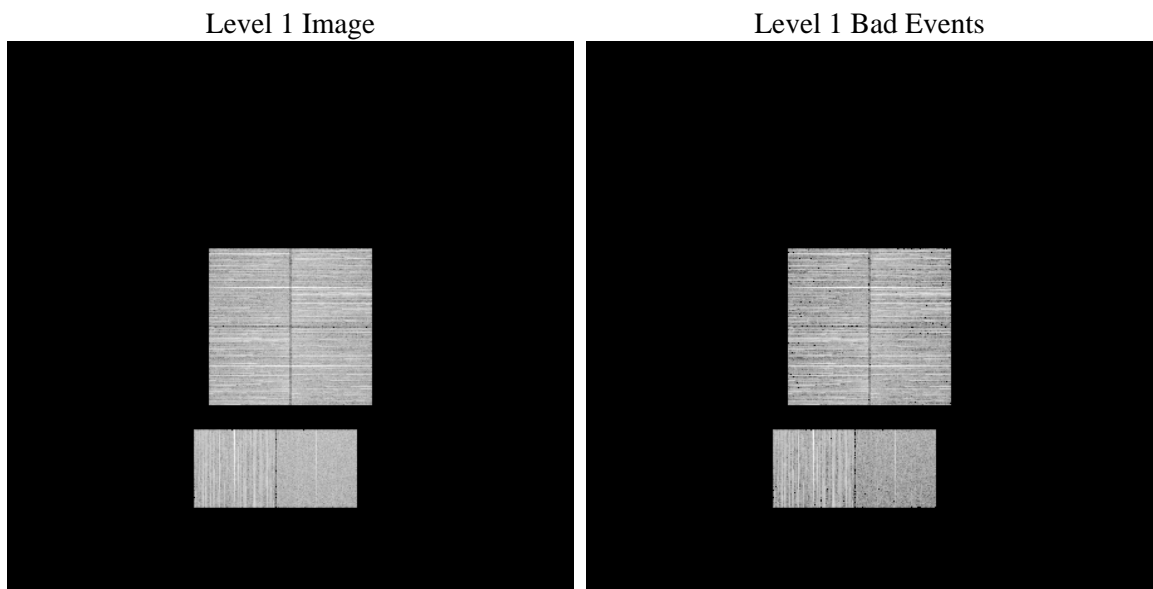
1 Front

seq_num	 	Sequence number
obs_id	53644	Observation id
title	ACIS-012367 diagnostics	Proposal title
observer	CHANDRA engineering request/realtime commanding	Principal investig
object	 	Source name
dtcycle	0	
cycle	P	events from which exps? Prim/Second/Both
ra_targ	0.0	Observer's specified target RA [deg]
dec_targ	0.0	Observer's specified target Dec [deg]
ra_nom	17.977833439646	Nominal RA [deg]
dec_nom	-7.3879240380933	Nominal Dec [deg]
roll_nom	119.50565568684	Nominal Roll [deg]
revision	1	Processing version of data
ontime	5602.8397810459	Sum of GTIs [s]
livetime	5531.8932501132	Livetime [s]
ontime0	5502.3265707493	Sum of GTIs [s]
ontime1	5502.2887459993	Sum of GTIs [s]
ontime2	5508.7297362685	Sum of GTIs [s]
ontime3	5505.6529060006	Sum of GTIs [s]
ontime6	5505.447586596	Sum of GTIs [s]
ontime7	5602.8397810459	Sum of GTIs [s]
l2events	136931	Number of level 2 events

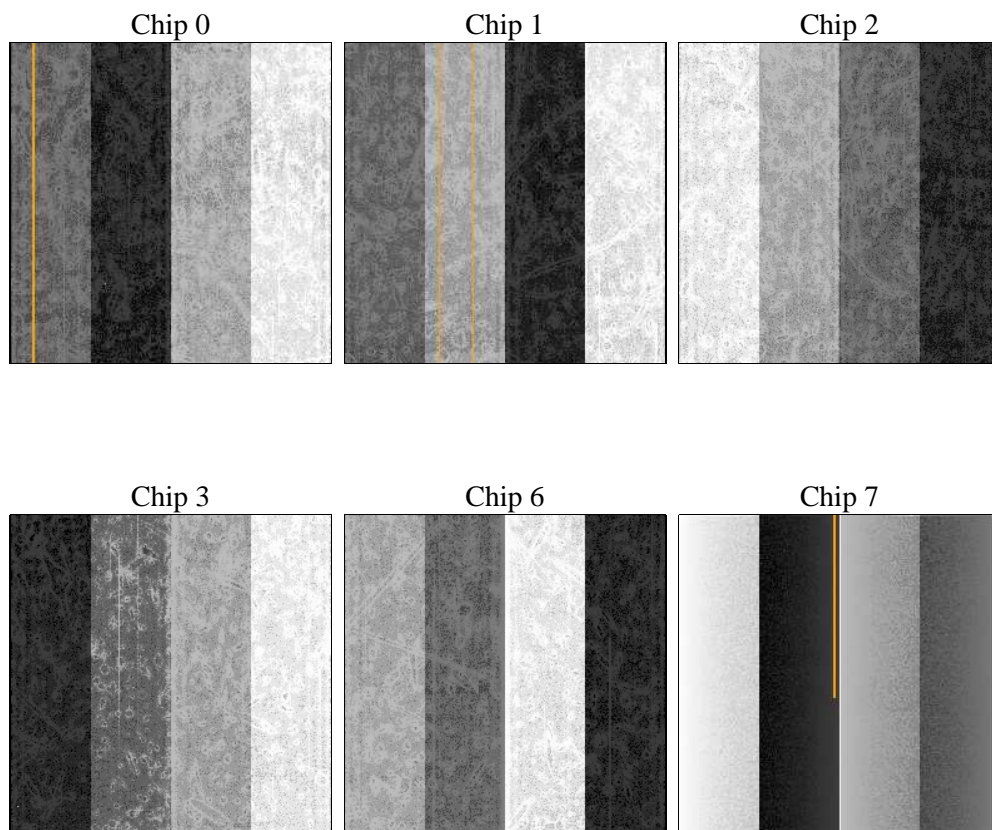
2 OBI

2.1 OBI

2.1.1 Images



2.1.2 Bias



2.1.3 Parameters

obi_num	0	Obi number	sched_exp_time	0.0	[s] Scheduled observation exposure time
ascdsver	10	Processing system revision	ontime	5602.8397810459	Sum of GTIs [s]
caldsver	4.5.6	 	ontime0	5502.3265707493	Sum of GTIs [s]
date	2013-06-09T17:12:07	Date and time of file creation	ontime1	5502.2887459993	Sum of GTIs [s]
revision	1	Processing version of data	ontime2	5508.7297362685	Sum of GTIs [s]
			ontime3	5505.6529060006	Sum of GTIs [s]
			ontime6	5505.447586596	Sum of GTIs [s]
			ontime7	5602.8397810459	Sum of GTIs [s]
			l1events	568303	Number of level 1 events

2.1.4 Events

	ccd 0	ccd 1	ccd 2	ccd 3	ccd 6	ccd 7		ccd 0	ccd 1	ccd 2	ccd 3	ccd 6	ccd 7
level 1 events	88896	102531	102085	93599	99092	82100	grade 0 events	11109	10807	11448	11364	11298	6006
rejected events	67677	81316	80781	72283	77039	43466		12%	10%	11%	12%	11%	7%
rejected %	76%	79%	79%	77%	77%	52%	grade 1 events	59	34	55	65	61	71
								0%	0%	0%	0%	0%	0%
							grade 2 events	4213	4414	4141	4062	4552	9470
								4%	4%	4%	4%	4%	11%
							grade 3 events	1517	1413	1489	1465	1479	3164
								1%	1%	1%	1%	1%	3%
							grade 4 events	1385	1453	1524	1611	1413	3208
								1%	1%	1%	1%	1%	3%
							grade 5 events	1738	1827	1639	1990	1998	4749
								1%	1%	1%	2%	2%	5%
							grade 6 events	3398	3563	3144	3188	3807	17524
								3%	3%	3%	3%	3%	21%
							grade 7 events	65477	79020	78645	69854	74484	37908
								73%	77%	77%	74%	75%	46%

2.2 Compared Parameters

Parameter	Planned	Actual	Parameter	Planned	Actual
Instrument	ACIS	ACIS	Obspar format version number	7	7
Detector	ACIS-012367	ACIS-012367	Obspar file type	PREDICTED	ACTUAL
Grating	NONE	NONE	Obspar update status	NONE	UPDATED
Data mode	FAINT	FAINT	Number of optional ACIS chips dropped	0	0
Observation mode	SECONDARY	SECONDARY	On-chip summing requested	N	N
[deg] Pointing RA	0	17.97783343964558	Subarray requested	NONE	NONE
[deg] Pointing Dec	0	-7.387924038093256	Alternating exposures requested	N	N
[deg] Pointing Roll	0.0	119.5056556868371	[s] Primary exposure time	3.2	3.2
[mm] SIM focus pos	-1.429586	-1.428180813131781			
[mm] SIM defocus	0.1037507710433287	0.1051558262725154			
[mm] SIM translation stage pos	250.455976	250.466033080201			
[mm] SIM translation stage offset	0	-0.01005468664627074			
[s] Observation start time (MET)	487130711.322269	487130710.29727			
Observation start date	2013-06-09T02:05:11	2013-06-09T02:05:10			
[s] Observation end time (MET)	487139696.472756	487139695.44776			
Observation end date	2013-06-09T04:34:56	2013-06-09T04:34:55			
Read mode	TIMED	TIMED			

2.3 Star Slots

2.4 FID Slots

A Summary

A.1 Status

V&V Scientist	Jen Lauer
V&V Date (YYYY-MM-DD)	2013.06.10
V&V Edition	1
V&V Disposition and Status	OK
V&V Charge Time	5.6028397810459

A.2 Comments