

# V&V Reference Report

## L2 ASCDS Version : 10

Observation 53617 - L2 Version 1  
Chandra X-Ray Center

L2 Processing Date : Jun 22 2013

## Contents

<b>1</b>	<b>Front</b>	<b>2</b>
<b>2</b>	<b>OBI</b>	<b>3</b>
2.1	OBI . . . . .	3
2.1.1	Images . . . . .	3
2.1.2	Bias . . . . .	3
2.1.3	Parameters . . . . .	4
2.1.4	Events . . . . .	4
2.2	Compared Parameters . . . . .	5
2.3	Star Slots . . . . .	6
2.4	FID Slots . . . . .	6
<b>A</b>	<b>Summary</b>	<b>7</b>
A.1	Status . . . . .	7
A.2	Comments . . . . .	7

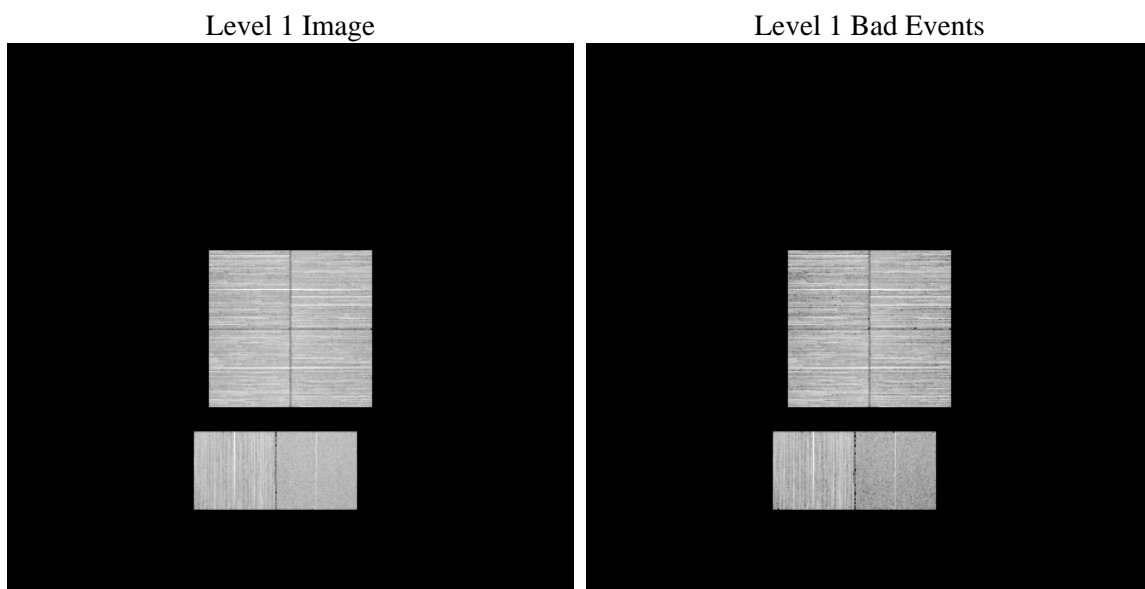
# 1 Front

seq_num	&#160	Sequence number
obs_id	53617	Observation id
title	ACIS-012367 diagnostics	Proposal title
observer	CHANDRA engineering request/realtime commanding	Principal investig
object	&#160	Source name
dtcycle	0	&#160
cycle	P	events from which exps? Prim/Second/Both
ra_targ	0.0	Observer's specified target RA [deg]
dec_targ	0.0	Observer's specified target Dec [deg]
ra_nom	273.03910668332	Nominal RA [deg]
dec_nom	-40.481331655479	Nominal Dec [deg]
roll_nom	7.5827521303024	Nominal Roll [deg]
revision	1	Processing version of data
ontime	8290.5066401958	Sum of GTIs [s]
livetime	8185.5272531739	Livetime [s]
ontime0	8290.5066303611	Sum of GTIs [s]
ontime1	8290.473990798	Sum of GTIs [s]
ontime2	8290.4329507947	Sum of GTIs [s]
ontime3	8290.5066401958	Sum of GTIs [s]
ontime6	8290.3919107914	Sum of GTIs [s]
ontime7	8290.5066401958	Sum of GTIs [s]
l2events	209920	Number of level 2 events

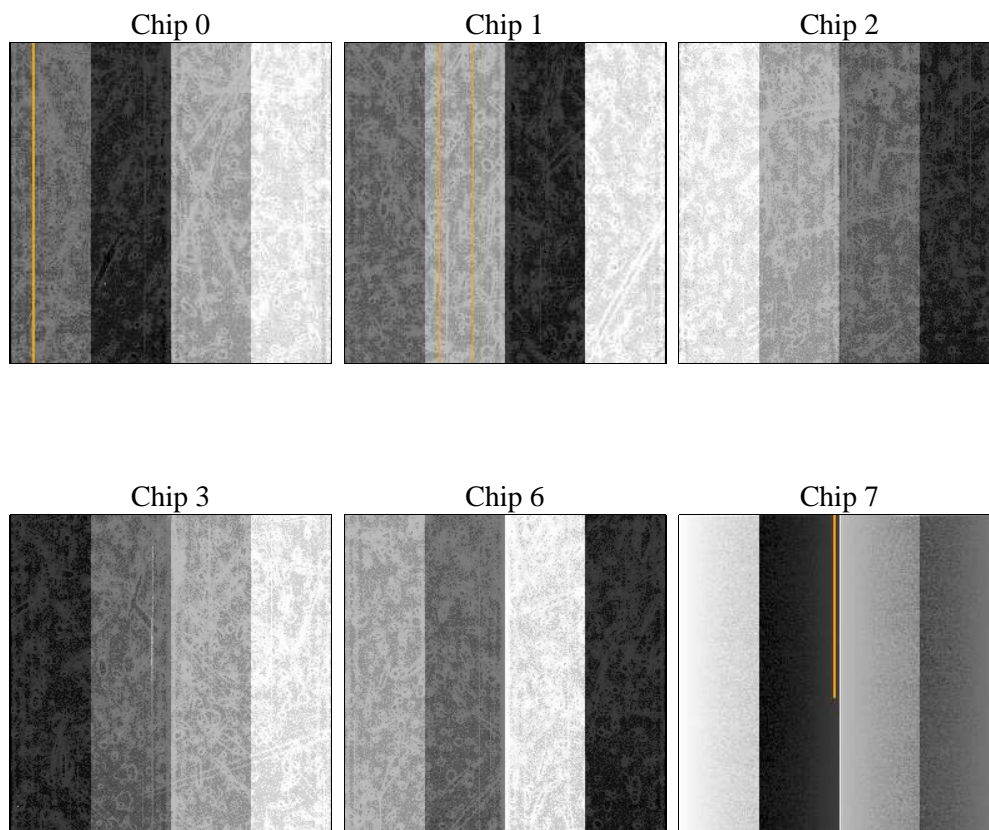
## 2 OBI

### 2.1 OBI

#### 2.1.1 Images



#### 2.1.2 Bias



### 2.1.3 Parameters

obi_num	1	Obi number	sched_exp_time	0.0	[s] Scheduled observation exposure time
ascdsver	10	Processing system revision	ontime	8290.5066401958	Sum of GTIs [s]
caldsver	4.5.6	&#160	ontime0	8290.5066303611	Sum of GTIs [s]
date	2013-06-22T15:56:38	Date and time of file creation	ontime1	8290.473990798	Sum of GTIs [s]
revision	1	Processing version of data	ontime2	8290.4329507947	Sum of GTIs [s]
			ontime3	8290.5066401958	Sum of GTIs [s]
			ontime6	8290.3919107914	Sum of GTIs [s]
			ontime7	8290.5066401958	Sum of GTIs [s]
			l1events	909356	Number of level 1 events

### 2.1.4 Events

	ccd 0	ccd 1	ccd 2	ccd 3	ccd 6	ccd 7		ccd 0	ccd 1	ccd 2	ccd 3	ccd 6	ccd 7
level 1 events	149093	161491	167205	152792	153681	125094	grade 0 events	16536	16105	16858	16853	16766	8835
rejected events	116744	128857	134819	120303	119907	66281		11%	9%	10%	11%	10%	7%
rejected %	78%	79%	80%	78%	78%	52%	grade 1 events	100	84	109	80	76	84
								0%	0%	0%	0%	0%	0%
							grade 2 events	6461	6743	6231	6128	6709	14342
								4%	4%	3%	4%	4%	11%
							grade 3 events	2217	2174	2234	2298	2278	4962
								1%	1%	1%	1%	1%	3%
							grade 4 events	2053	2196	2235	2308	2227	4854
								1%	1%	1%	1%	1%	3%
							grade 5 events	2808	2977	2746	3295	3045	7562
								1%	1%	1%	2%	1%	6%
							grade 6 events	5082	5416	4828	4902	5794	25820
								3%	3%	2%	3%	3%	20%
							grade 7 events	113836	125796	131964	116928	116786	58635
								76%	77%	78%	76%	75%	46%

## 2.2 Compared Parameters

Parameter	Planned	Actual
Instrument	ACIS	ACIS
Detector	ACIS-012367	ACIS-012367
Grating	NONE	NONE
Data mode	FAINT	FAINT
Observation mode	SECONDARY	SECONDARY
[deg] Pointing RA	0	273.0391066833246
[deg] Pointing Dec	0	-40.48133165547856
[deg] Pointing Roll	0.0	7.582752130302431
[mm] SIM focus pos	-1.429586	-1.428180813131781
[mm] SIM defocus	0.1037507710433287	0.1051558262725154
[mm] SIM translation stage pos	250.455976	250.466033080201
[mm] SIM translation stage offset	0	-0.01005468664627074
[s] Observation start time (MET)	488243611.282703	488243610.2577
Observation start date	2013-06-21T23:13:31	2013-06-21T23:13:30
[s] Observation end time (MET)	488262413.883723	488262412.85872
Observation end date	2013-06-22T04:26:54	2013-06-22T04:26:52
Read mode	TIMED	TIMED

Parameter	Planned	Actual
Obspar format version number	7	7
Obspar file type	PREDICTED	ACTUAL
Obspar update status	NONE	UPDATED
Number of optional ACIS chips dropped	0	0
On-chip summing requested	N	N
Subarray requested	NONE	NONE
Alternating exposures requested	N	N
[s] Primary exposure time	3.2	3.2

## **2.3 Star Slots**

## **2.4 FID Slots**

## A Summary

### A.1 Status

V&V Scientist	Joy Nichols
V&V Date (YYYY-MM-DD)	2013.06.24
V&V Edition	1
V&V Disposition and Status	OK
V&V Charge Time	8.2905066401958

### A.2 Comments