

# V&V Reference Report

## L2 ASCDS Version : 10

Observation 53375 - L2 Version 1  
Chandra X-Ray Center

L2 Processing Date : Sep 25 2013

## Contents

<b>1</b>	<b>Front</b>	<b>2</b>
<b>2</b>	<b>OBI</b>	<b>3</b>
2.1	OBI . . . . .	3
2.1.1	Images . . . . .	3
2.1.2	Bias . . . . .	3
2.1.3	Parameters . . . . .	4
2.1.4	Events . . . . .	4
2.2	Compared Parameters . . . . .	5
2.3	Star Slots . . . . .	6
2.4	FID Slots . . . . .	6
<b>A</b>	<b>Summary</b>	<b>7</b>
A.1	Status . . . . .	7
A.2	Comments . . . . .	7



# 1 Front

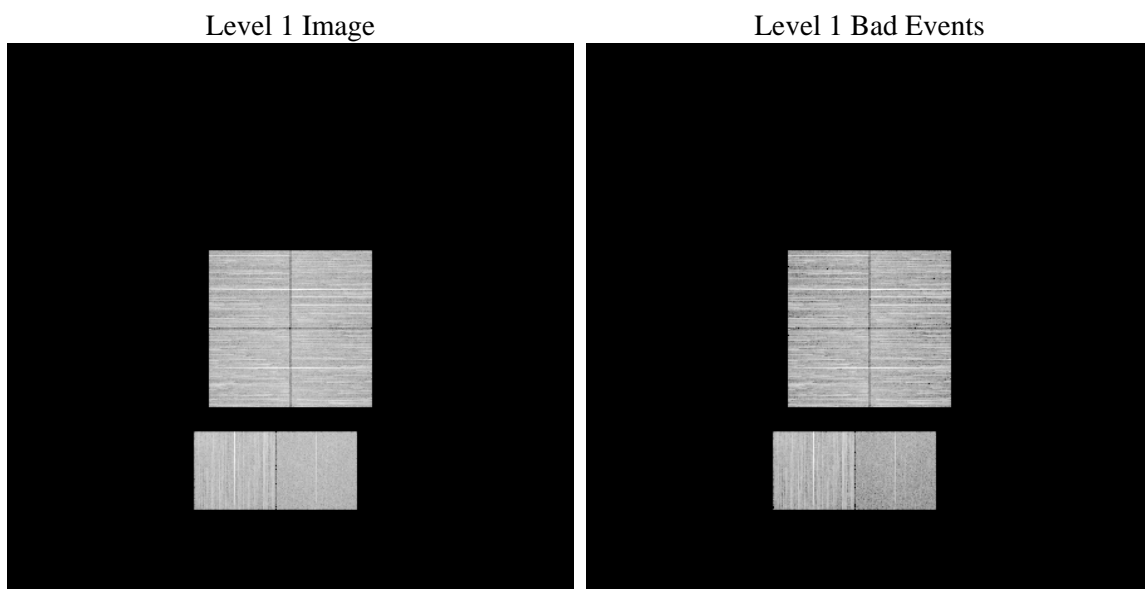
seq_num	&#160	Sequence number
obs_id	53375	Observation id
title	ACIS-012367 diagnostics	Proposal title
observer	CHANDRA engineering request/realtime commanding	Principal investig
object	&#160	Source name
dtcycle	0	&#160
cycle	P	events from which exps? Prim/Second/Both
ra_targ	0.0	Observer's specified target RA [deg]
dec_targ	0.0	Observer's specified target Dec [deg]
ra_nom	234.65849577449	Nominal RA [deg]
dec_nom	-10.175448334404	Nominal Dec [deg]
roll_nom	81.21401159417	Nominal Roll [deg]
revision	1	Processing version of data
ontime	8149.8657367826	Sum of GTIs [s]
livetime	8046.6672295634	Livetime [s]
ontime0	8149.8246967793	Sum of GTIs [s]
ontime1	8149.783656776	Sum of GTIs [s]
ontime2	8149.7426167727	Sum of GTIs [s]
ontime3	8149.9067767859	Sum of GTIs [s]
ontime6	8149.7015767694	Sum of GTIs [s]
ontime7	8149.8657367826	Sum of GTIs [s]
l2events	222058	Number of level 2 events



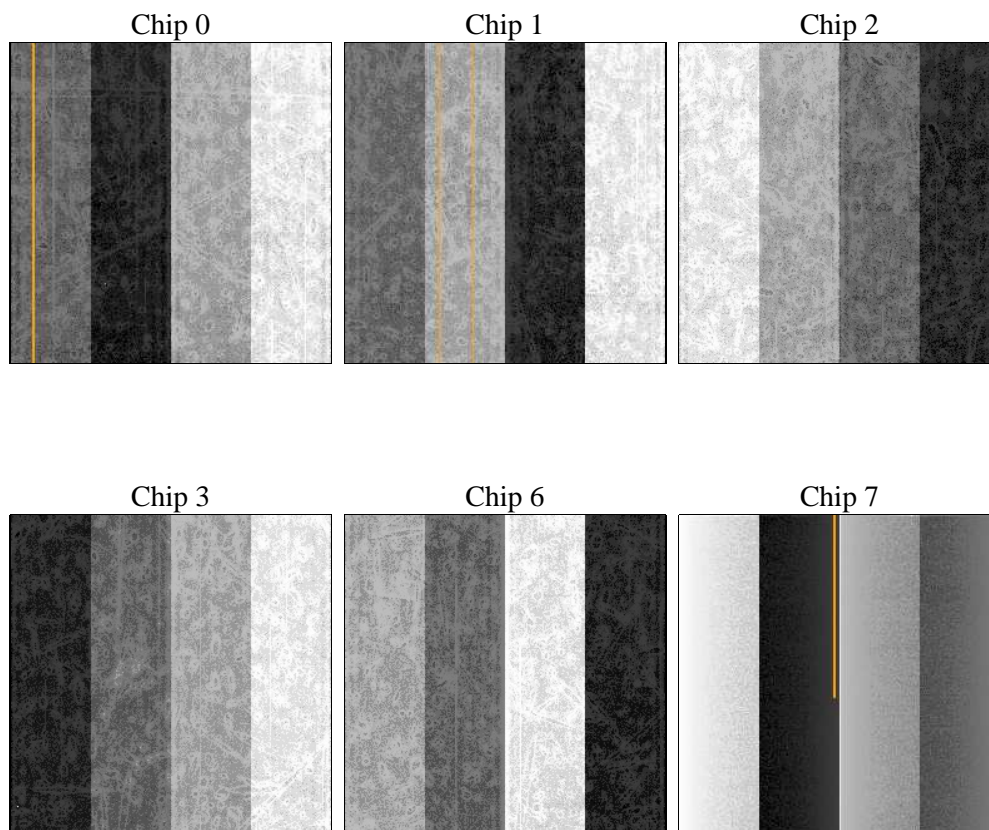
## 2 OBI

### 2.1 OBI

#### 2.1.1 Images



#### 2.1.2 Bias





### 2.1.3 Parameters

obi_num	0	Obi number	sched_exp_time	0.0	[s] Scheduled observation exposure time
ascdsver	10	Processing system revision	ontime	8149.8657367826	Sum of GTIs [s]
caldbver	4.5.8	&#160	ontime0	8149.8246967793	Sum of GTIs [s]
date	2013-09-25T17:43:09	Date and time of file creation	ontime1	8149.783656776	Sum of GTIs [s]
revision	1	Processing version of data	ontime2	8149.7426167727	Sum of GTIs [s]
			ontime3	8149.9067767859	Sum of GTIs [s]
			ontime6	8149.7015767694	Sum of GTIs [s]
			ontime7	8149.8657367826	Sum of GTIs [s]
			l1events	878289	Number of level 1 events

### 2.1.4 Events

	ccd 0	ccd 1	ccd 2	ccd 3	ccd 6	ccd 7		ccd 0	ccd 1	ccd 2	ccd 3	ccd 6	ccd 7
level 1 events	142630	149345	156291	149719	154859	125445	grade 0 events	17510	17056	18369	18109	18202	9394
rejected events	108336	114674	121331	114867	118096	66096		12%	11%	11%	12%	11%	7%
rejected %	75%	76%	77%	76%	76%	52%	grade 1 events	86	62	115	103	81	93
								0%	0%	0%	0%	0%	0%
							grade 2 events	7142	7645	6849	6729	7487	14818
								5%	5%	4%	4%	4%	11%
							grade 3 events	2401	2256	2412	2455	2340	4956
								1%	1%	1%	1%	1%	3%
							grade 4 events	2188	2252	2354	2437	2349	4784
								1%	1%	1%	1%	1%	3%
							grade 5 events	2765	2790	2656	3071	3092	7467
								1%	1%	1%	2%	1%	5%
							grade 6 events	5829	6236	5730	5917	7218	26593
								4%	4%	3%	3%	4%	21%
							grade 7 events	104709	111048	117806	110898	114090	57340
								73%	74%	75%	74%	73%	45%



## 2.2 Compared Parameters

Parameter	Planned	Actual
Instrument	ACIS	ACIS
Detector	ACIS-012367	ACIS-012367
Grating	NONE	NONE
Data mode	FAINT	FAINT
Observation mode	SECONDARY	SECONDARY
[deg] Pointing RA	0	234.6584957744864
[deg] Pointing Dec	0	-10.17544833440426
[deg] Pointing Roll	0.0	81.2140115941702
SIM focus pos (mm)	-1.4281808131	-1.4281808131
[mm] SIM defocus	0.1051557500557434	0.1051557500557434
SIM translation stage pos (mm)	250.4660330802	250.4660330802
[mm] SIM translation stage offset	-0.01005726120527584	-0.01005726120527584
[s] Observation start time (MET)	496467196.98082	496467196.98082
Observation start date	2013-09-25T03:33:17	2013-09-25T03:33:16
[s] Observation end time (MET)	496476743.982472	496476743.982472
Observation end date	2013-09-25T06:12:24	2013-09-25T06:12:23
Read mode	TIMED	TIMED

Parameter	Planned	Actual
Obspar format version number	7	7
Obspar file type	PREDICTED	ACTUAL
Obspar update status	OVERRIDE	OVERRIDE
Number of optional ACIS chips dropped	0	0
On-chip summing requested	N	N
Subarray requested	NONE	NONE
Alternating exposures requested	N	N
[s] Primary exposure time	3.2	3.2



## 2.3 Star Slots

## 2.4 FID Slots



## A Summary

### A.1 Status

V&V Scientist	Jen Lauer
V&V Date (YYYY-MM-DD)	2013.09.25
V&V Edition	1
V&V Disposition and Status	OK
V&V Charge Time	8.1498657367826

### A.2 Comments