

V&V Reference Report

L2 ASCDS Version : 10

Observation 53369 - L2 Version 1
Chandra X-Ray Center

L2 Processing Date : Sep 26 2013

Contents

1	Front	2
2	OBI	3
2.1	OBI	3
2.1.1	Images	3
2.1.2	Bias	3
2.1.3	Parameters	4
2.1.4	Events	4
2.2	Compared Parameters	5
2.3	Star Slots	6
2.4	FID Slots	6
A	Summary	7
A.1	Status	7
A.2	Comments	7

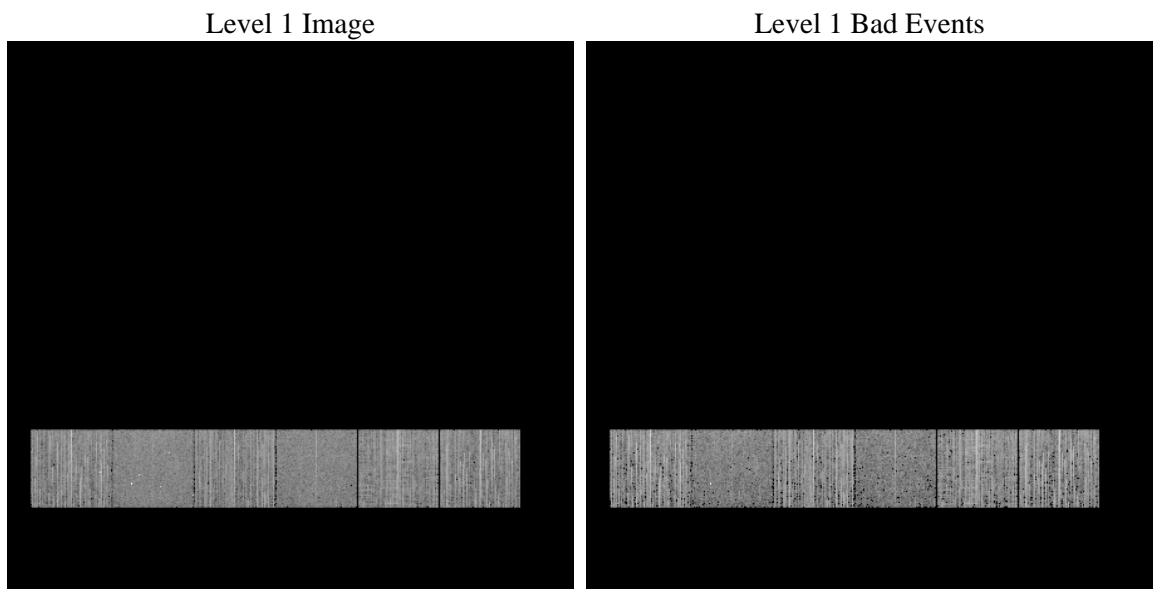
1 Front

seq_num	 	Sequence number
obs_id	53369	Observation id
title	ACIS-456789 diagnostics	Proposal title
observer	CHANDRA engineering request/realtime commanding	Principal investig
object	 	Source name
dtcycle	0	
cycle	P	events from which exps? Prim/Second/Both
ra_targ	0.0	Observer's specified target RA [deg]
dec_targ	0.0	Observer's specified target Dec [deg]
ra_nom	346.03041124828	Nominal RA [deg]
dec_nom	-20.003028820187	Nominal Dec [deg]
roll_nom	321.00771546102	Nominal Roll [deg]
revision	1	Processing version of data
ontime	3283.1999878287	Sum of GTIs [s]
livetime	3241.6261326772	Livetime [s]
ontime4	3283.1999878287	Sum of GTIs [s]
ontime5	3283.1999878287	Sum of GTIs [s]
ontime6	3283.1999878287	Sum of GTIs [s]
ontime7	3283.1999878287	Sum of GTIs [s]
ontime8	3283.1999878287	Sum of GTIs [s]
ontime9	3283.1999878287	Sum of GTIs [s]
l2events	88354	Number of level 2 events

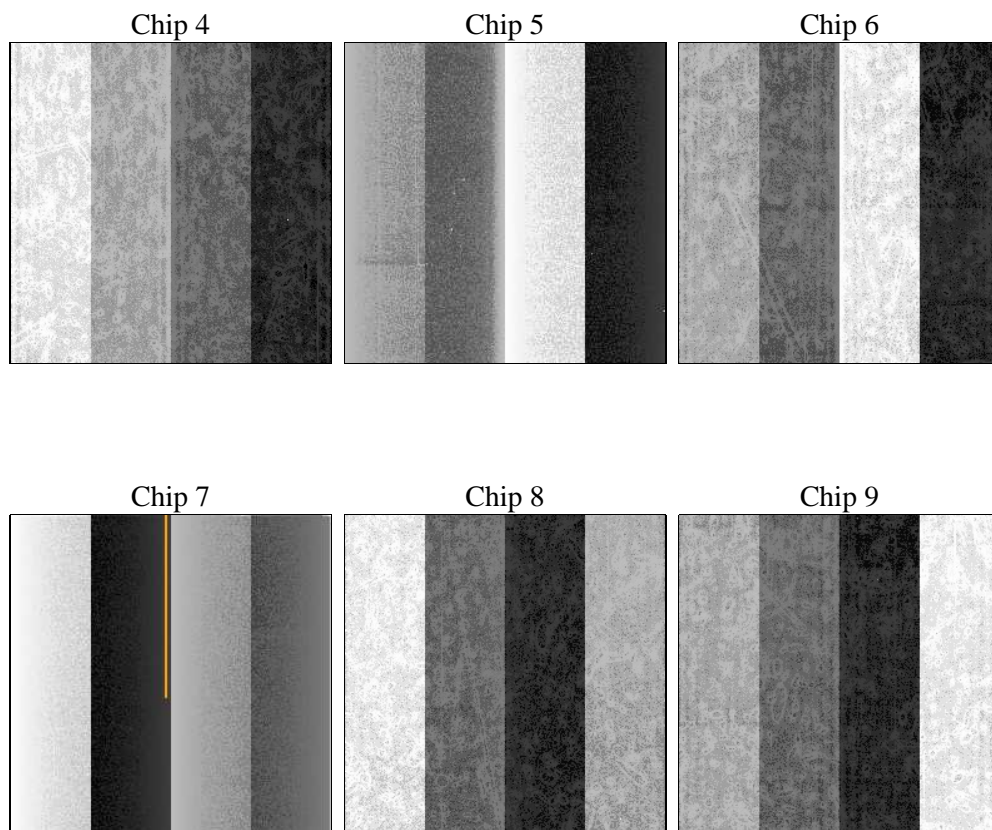
2 OBI

2.1 OBI

2.1.1 Images



2.1.2 Bias



2.1.3 Parameters

obi_num	0	Obi number	sched_exp_time	0.0	[s] Scheduled observation exposure time
ascdsver	10	Processing system revision	ontime	3283.1999878287	Sum of GTIs [s]
caldbver	4.5.8	 	ontime4	3283.1999878287	Sum of GTIs [s]
date	2013-09-26T04:17:53	Date and time of file creation	ontime5	3283.1999878287	Sum of GTIs [s]
revision	1	Processing version of data	ontime6	3283.1999878287	Sum of GTIs [s]
			ontime7	3283.1999878287	Sum of GTIs [s]
			ontime8	3283.1999878287	Sum of GTIs [s]
			ontime9	3283.1999878287	Sum of GTIs [s]
			l1events	353826	Number of level 1 events

2.1.4 Events

	ccd 4	ccd 5	ccd 6	ccd 7	ccd 8	ccd 9		ccd 4	ccd 5	ccd 6	ccd 7	ccd 8	ccd 9
level 1 events	64315	52554	61234	48013	63876	63834	grade 0 events	7231	3465	6129	3152	7209	6030
rejected events	51457	28259	48862	25922	47648	51844		11%	6%	10%	6%	11%	9%
rejected %	80%	53%	79%	53%	74%	81%	grade 1 events	56	75	29	36	37	31
								0%	0%	0%	0%	0%	0%
							grade 2 events	2273	8820	2476	5445	3225	2338
								3%	16%	4%	11%	5%	3%
							grade 3 events	881	866	763	1762	1273	795
								1%	1%	1%	3%	1%	1%
							grade 4 events	852	840	825	1799	1297	827
								1%	1%	1%	3%	2%	1%
							grade 5 events	1249	2388	1173	2933	1569	1366
								1%	4%	1%	6%	2%	2%
							grade 6 events	1630	10338	2190	9958	3234	2022
								2%	19%	3%	20%	5%	3%
							grade 7 events	50143	25762	47649	22928	46032	50425
								77%	49%	77%	47%	72%	78%

2.2 Compared Parameters

Parameter	Planned	Actual	Parameter	Planned	Actual
Instrument	ACIS	ACIS	Obspar format version number	7	7
Detector	ACIS-456789	ACIS-456789	Obspar file type	PREDICTED	ACTUAL
Grating	NONE	NONE	Obspar update status	NONE	UPDATED
Data mode	FAINT	FAINT	Number of optional ACIS chips dropped	0	0
Observation mode	SECONDARY	SECONDARY	On-chip summing requested	N	N
[deg] Pointing RA	0	346.0304112482813	Subarray requested	NONE	NONE
[deg] Pointing Dec	0	-20.0030288201868	Alternating exposures requested	N	N
[deg] Pointing Roll	0.0	321.0077154610154	[s] Primary exposure time	3.2	3.2
[mm] SIM focus pos	-1.429586	-1.428180813131781			
[mm] SIM defocus	0.1037507710433287	0.1051558262725154			
[mm] SIM translation stage pos	250.455976	250.466033080201			
[mm] SIM translation stage offset	0	-0.01005468664627074			
[s] Observation start time (MET)	496501390.982688	496501389.95769			
Observation start date	2013-09-25T13:03:11	2013-09-25T13:03:09			
[s] Observation end time (MET)	496507666.033031	496507665.00803			
Observation end date	2013-09-25T14:47:46	2013-09-25T14:47:45			
Read mode	TIMED	TIMED			

2.3 Star Slots

2.4 FID Slots

A Summary

A.1 Status

V&V Scientist	Jen Lauer
V&V Date (YYYY-MM-DD)	2013.09.26
V&V Edition	1
V&V Disposition and Status	OK
V&V Charge Time	3.2831999878287

A.2 Comments