

# V&V Reference Report

## L2 ASCDS Version : 8.4.3

Observation 54952 - L2 Version 1  
Chandra X-Ray Center

L2 Processing Date : Jan 2 2012

## Contents

<b>1</b>	<b>Front</b>	<b>2</b>
<b>2</b>	<b>OBI</b>	<b>3</b>
2.1	OBI . . . . .	3
2.1.1	Images . . . . .	3
2.1.2	Bias . . . . .	3
2.1.3	Parameters . . . . .	4
2.1.4	Events . . . . .	4
2.2	Compared Parameters . . . . .	5
2.3	Star Slots . . . . .	6
2.4	FID Slots . . . . .	6
<b>A</b>	<b>Summary</b>	<b>7</b>
A.1	Status . . . . .	7
A.2	Comments . . . . .	7

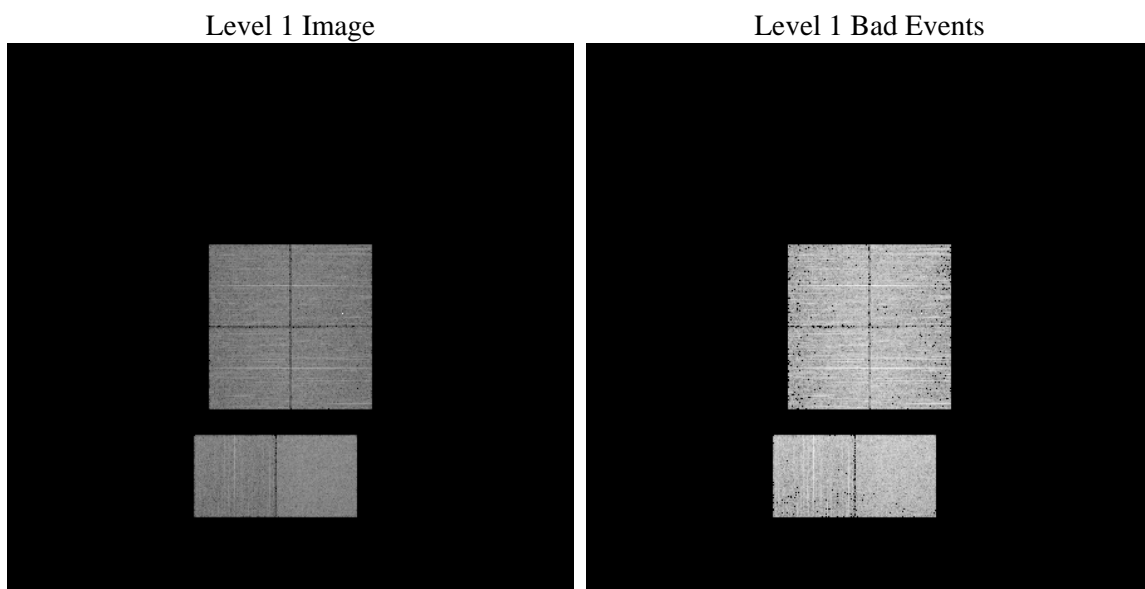
# 1 Front

seq_num	&#160	Sequence number
obs_id	54952	Observation id
title	ACIS-012367 diagnostics	Proposal title
observer	CHANDRA engineering request/realtime commanding	Principal investig
object	&#160	Source name
dtcycle	0	&#160
cycle	P	events from which exps? Prim/Second/Both
ra_targ	0.0	Observer's specified target RA [deg]
dec_targ	0.0	Observer's specified target Dec [deg]
ra_nom	80.02844455851	Nominal RA [deg]
dec_nom	-1.0037046630804	Nominal Dec [deg]
roll_nom	319.77415938972	Nominal Roll [deg]
revision	1	Processing version of data
ontime	4296.5479440093	Sum of GTIs [s]
livetime	4242.1424668717	Livetime [s]
ontime0	4296.506904006	Sum of GTIs [s]
ontime1	4296.4658640027	Sum of GTIs [s]
ontime2	4296.4248239994	Sum of GTIs [s]
ontime3	4296.5889840126	Sum of GTIs [s]
ontime6	4296.3837839961	Sum of GTIs [s]
ontime7	4296.5479440093	Sum of GTIs [s]
l2events	144769	Number of level 2 events

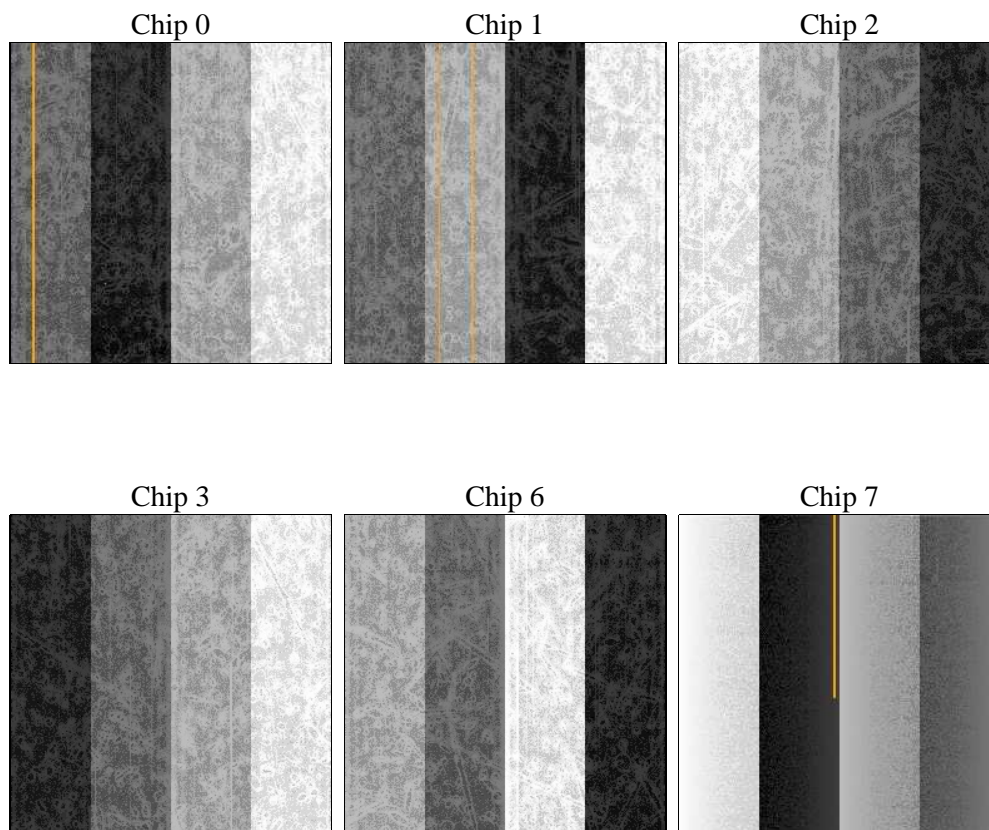
## 2 OBI

### 2.1 OBI

#### 2.1.1 Images



#### 2.1.2 Bias



### 2.1.3 Parameters

obi_num	0	Obi number	sched_exp_time	0.0	[s] Scheduled observation exposure time
ascdsver	8.4.3	Processing system revision	ontime	4296.5479440093	Sum of GTIs [s]
caldsver	4.4.7	&#160	ontime0	4296.506904006	Sum of GTIs [s]
date	2012-01-02T22:35:31	Date and time of file creation	ontime1	4296.4658640027	Sum of GTIs [s]
revision	1	Processing version of data	ontime2	4296.4248239994	Sum of GTIs [s]
			ontime3	4296.5889840126	Sum of GTIs [s]
			ontime6	4296.3837839961	Sum of GTIs [s]
			ontime7	4296.5479440093	Sum of GTIs [s]
			l1events	343415	Number of level 1 events

### 2.1.4 Events

	ccd 0	ccd 1	ccd 2	ccd 3	ccd 6	ccd 7		ccd 0	ccd 1	ccd 2	ccd 3	ccd 6	ccd 7
level 1 events	52115	54797	54546	56361	53598	71998	grade 0 events	12592	13619	12790	12861	12953	6492
rejected events	29237	30559	31678	33395	29916	33994		24%	24%	23%	22%	24%	9%
rejected %	56%	55%	58%	59%	55%	47%	grade 1 events	87	61	81	78	61	68
								0%	0%	0%	0%	0%	0%
							grade 2 events	4617	4694	4328	4375	4524	8671
								8%	8%	7%	7%	8%	12%
							grade 3 events	1667	1674	1693	1679	1613	3503
								3%	3%	3%	2%	3%	4%
							grade 4 events	1548	1651	1652	1768	1710	3606
								2%	3%	3%	3%	3%	5%
							grade 5 events	1872	1922	1754	2113	2010	4992
								3%	3%	3%	3%	3%	6%
							grade 6 events	3669	3924	3641	3513	4144	17755
								7%	7%	6%	6%	7%	24%
							grade 7 events	26063	27252	28607	29974	26583	26911
								50%	49%	52%	53%	49%	37%

## 2.2 Compared Parameters

Parameter	Planned	Actual
Instrument	ACIS	ACIS
Detector	ACIS-012367	ACIS-012367
Grating	NONE	NONE
Data mode	FAINT	FAINT
Observation mode	SECONDARY	SECONDARY
[deg] Pointing RA	0	80.02844455850953
[deg] Pointing Dec	0	-1.003704663080379
[deg] Pointing Roll	0.0	319.7741593897152
SIM focus pos (mm)	-1.4281808131	-1.4281808131
[mm] SIM defocus	0.1051557500557434	0.1051557500557434
SIM translation stage pos (mm)	250.4660330802	250.4660330802
[mm] SIM translation stage offset	-0.01005726120527584	-0.01005726120527584
[s] Observation start time (MET)	441860746.475976	441860746.475976
Observation start date	2012-01-02T03:05:46	2012-01-02T03:05:46
[s] Observation end time (MET)	441866336.076912	441866336.076912
Observation end date	2012-01-02T04:38:56	2012-01-02T04:38:56
Read mode	TIMED	TIMED

Parameter	Planned	Actual
Obspar format version number	7	7
Obspar file type	PREDICTED	ACTUAL
Obspar update status	OVERRIDE	OVERRIDE
Number of optional ACIS chips dropped	0	0
On-chip summing requested	N	N
Subarray requested	NONE	NONE
Alternating exposures requested	N	N
[s] Primary exposure time	3.2	3.2

## **2.3 Star Slots**

## **2.4 FID Slots**

## A Summary

### A.1 Status

V&V Scientist	Jen Lauer
V&V Date (YYYY-MM-DD)	2012.01.03
V&V Edition	1
V&V Disposition and Status	OK
V&V Charge Time	4.2965479440093

### A.2 Comments