

V&V Reference Report

L2 ASCDS Version : 8.4.3

Observation 54947 - L2 Version 1
Chandra X-Ray Center

L2 Processing Date : Jan 5 2012

Contents

1	Front	2
2	OBI	3
2.1	OBI	3
2.1.1	Images	3
2.1.2	Bias	3
2.1.3	Parameters	4
2.1.4	Events	4
2.2	Compared Parameters	5
2.3	Star Slots	6
2.4	FID Slots	6
A	Summary	7
A.1	Status	7
A.2	Comments	7

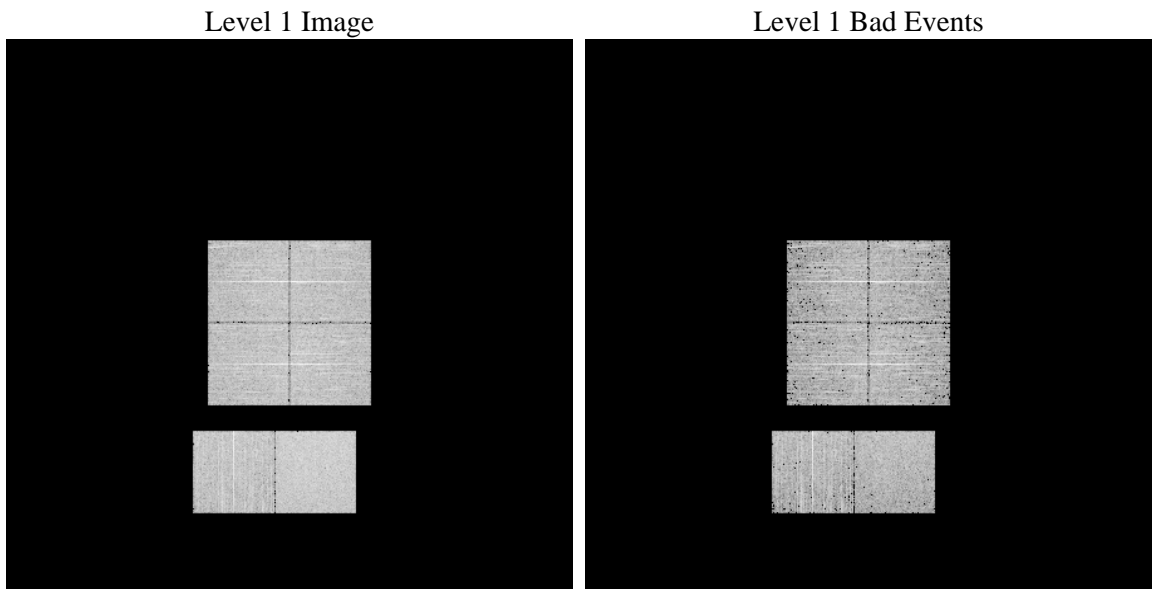
1 Front

seq_num	 	Sequence number
obs_id	54947	Observation id
title	ACIS-012367 diagnostics	Proposal title
observer	CHANDRA engineering request/realtime commanding	Principal investig
object	 	Source name
dtcycle	0	
cycle	P	events from which exps? Prim/Second/Both
ra_targ	0.0	Observer's specified target RA [deg]
dec_targ	0.0	Observer's specified target Dec [deg]
ra_nom	93.028622334243	Nominal RA [deg]
dec_nom	1.0026714374171	Nominal Dec [deg]
roll_nom	332.47206010488	Nominal Roll [deg]
revision	1	Processing version of data
ontime	4281.2177971005	Sum of GTIs [s]
livetime	4227.0064395138	Livetime [s]
ontime0	4281.2588371038	Sum of GTIs [s]
ontime1	4281.2998771667	Sum of GTIs [s]
ontime2	4281.34091717	Sum of GTIs [s]
ontime3	4281.1767571568	Sum of GTIs [s]
ontime6	4281.5999841094	Sum of GTIs [s]
ontime7	4281.2177971005	Sum of GTIs [s]
l2events	134135	Number of level 2 events

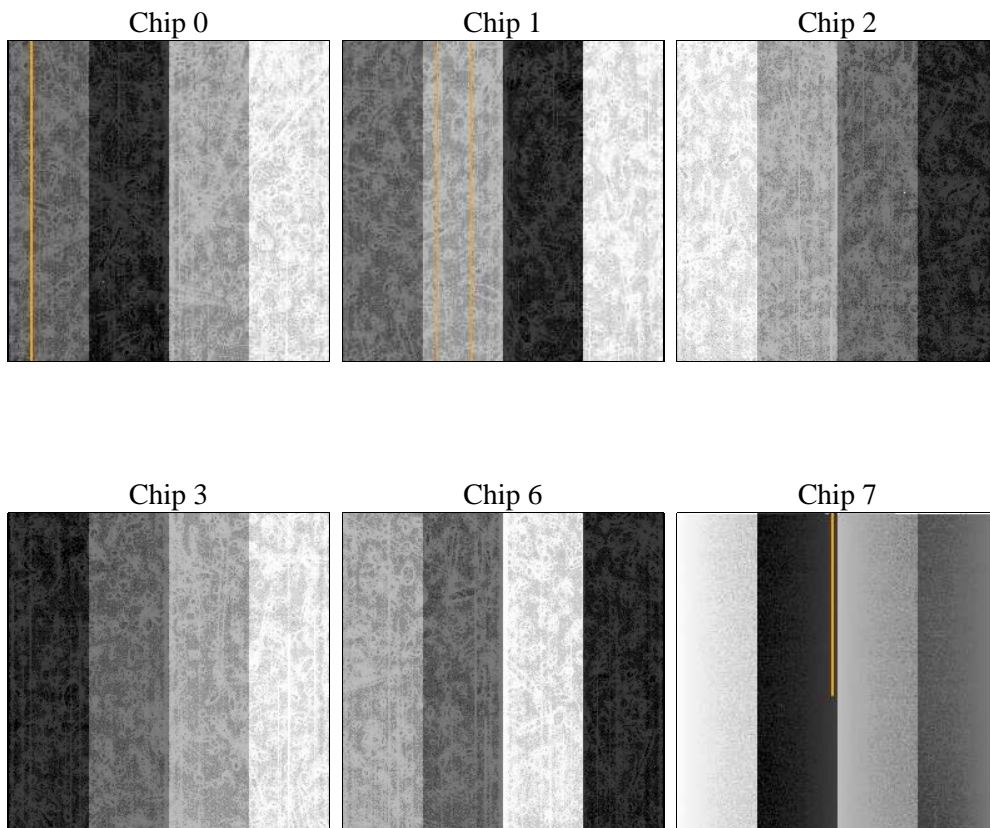
2 OBI

2.1 OBI

2.1.1 Images



2.1.2 Bias



2.1.3 Parameters

obi_num	0	Obi number	sched_exp_time	0.0	[s] Scheduled observation exposure time
ascdsver	8.4.3	Processing system revision	ontime	4281.2177971005	Sum of GTIs [s]
caldsver	4.4.7	 	ontime0	4281.2588371038	Sum of GTIs [s]
date	2012-01-05T16:36:07	Date and time of file creation	ontime1	4281.2998771667	Sum of GTIs [s]
revision	1	Processing version of data	ontime2	4281.34091717	Sum of GTIs [s]
			ontime3	4281.1767571568	Sum of GTIs [s]
			ontime6	4281.5999841094	Sum of GTIs [s]
			ontime7	4281.2177971005	Sum of GTIs [s]
			l1events	331532	Number of level 1 events

2.1.4 Events

	ccd 0	ccd 1	ccd 2	ccd 3	ccd 6	ccd 7		ccd 0	ccd 1	ccd 2	ccd 3	ccd 6	ccd 7
level 1 events	50892	50415	52548	54098	55785	67794	grade 0 events	7857	6349	8712	8270	5497	5014
rejected events	29854	29494	31547	33040	34113	31519		15%	12%	16%	15%	9%	7%
rejected %	58%	58%	60%	61%	61%	46%	grade 1 events	37	20	44	41	33	54
								0%	0%	0%	0%	0%	0%
							grade 2 events	7290	8645	6519	6913	10029	7604
								14%	17%	12%	12%	17%	11%
							grade 3 events	1027	816	1045	985	674	3301
								2%	1%	1%	1%	1%	4%
							grade 4 events	939	860	1094	992	710	2751
								1%	1%	2%	1%	1%	4%
							grade 5 events	1286	1307	1245	1447	1238	3947
								2%	2%	2%	2%	2%	5%
							grade 6 events	3925	4251	3631	3898	4776	17605
								7%	8%	6%	7%	8%	25%
							grade 7 events	28531	28167	30258	31552	32828	27518
								56%	55%	57%	58%	58%	40%

2.2 Compared Parameters

Parameter	Planned	Actual	Parameter	Planned	Actual
Instrument	ACIS	ACIS	Obspar format version number	7	7
Detector	ACIS-012367	ACIS-012367	Obspar file type	PREDICTED	ACTUAL
Grating	NONE	NONE	Obspar update status	NONE	UPDATED
Data mode	FAINT	FAINT	Number of optional ACIS chips dropped	0	0
Observation mode	SECONDARY	SECONDARY	On-chip summing requested	N	N
[deg] Pointing RA	0	93.02862233424294	Subarray requested	NONE	NONE
[deg] Pointing Dec	0	1.002671437417135	Alternating exposures requested	N	N
[deg] Pointing Roll	0.0	332.4720601048796	[s] Primary exposure time	3.2	3.2
[mm] SIM focus pos	-1.429586	-1.428180813131781			
[mm] SIM defocus	0.1037507710433287	0.1051558262725154			
[mm] SIM translation stage pos	250.455976	250.466033080201			
[mm] SIM translation stage offset	0	-0.01005468664627074			
[s] Observation start time (MET)	442112962.089298	442112961.0643			
Observation start date	2012-01-05T01:09:22	2012-01-05T01:09:21			
[s] Observation end time (MET)	442120132.989677	442120131.96468			
Observation end date	2012-01-05T03:08:53	2012-01-05T03:08:51			
Read mode	TIMED	TIMED			

2.3 Star Slots

2.4 FID Slots

A Summary

A.1 Status

V&V Scientist	Jen Lauer
V&V Date (YYYY-MM-DD)	2012.01.05
V&V Edition	1
V&V Disposition and Status	OK
V&V Charge Time	4.2812177971005

A.2 Comments