

V&V Reference Report

L2 ASCDS Version : 8.4.3

Observation 54935 - L2 Version 1
Chandra X-Ray Center

L2 Processing Date : Jan 13 2012

Contents

1	Front	2
2	OBI	3
2.1	OBI	3
2.1.1	Images	3
2.1.2	Bias	3
2.1.3	Parameters	4
2.1.4	Events	4
2.2	Compared Parameters	5
2.3	Star Slots	6
2.4	FID Slots	6
A	Summary	7
A.1	Status	7
A.2	Comments	7

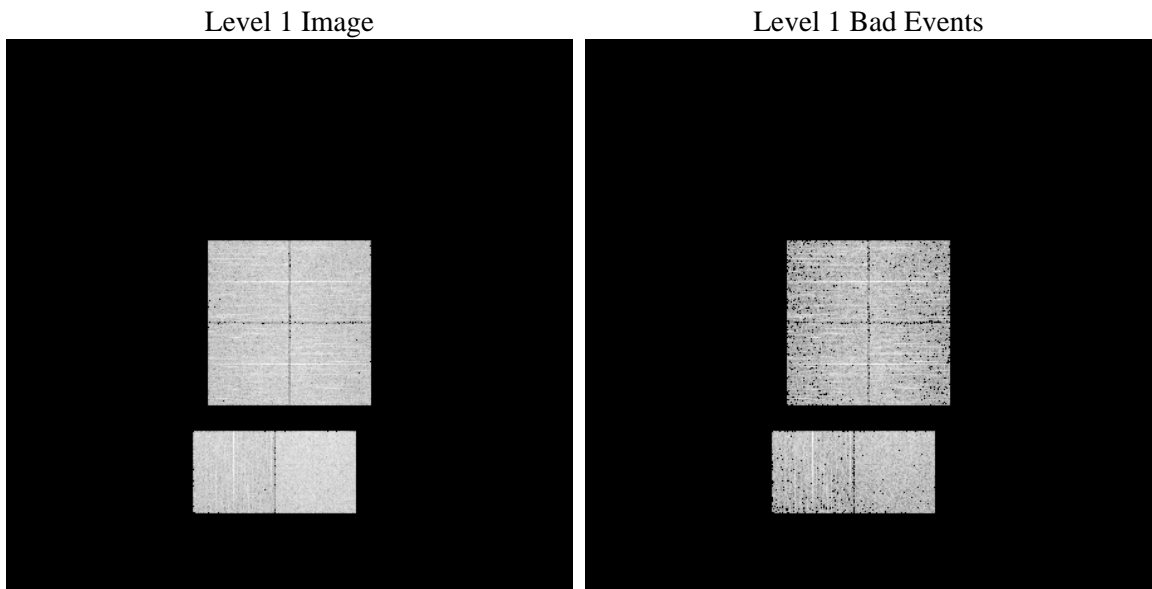
1 Front

seq_num	 	Sequence number
obs_id	54935	Observation id
title	ACIS-012367 diagnostics	Proposal title
observer	CHANDRA engineering request/realtime commanding	Principal investig
object	 	Source name
dtcycle	0	
cycle	P	events from which exps? Prim/Second/Both
ra_targ	0.0	Observer's specified target RA [deg]
dec_targ	0.0	Observer's specified target Dec [deg]
ra_nom	272.0348725873	Nominal RA [deg]
dec_nom	30.005299505182	Nominal Dec [deg]
roll_nom	24.75877039486	Nominal Roll [deg]
revision	1	Processing version of data
ontime	3647.4896906018	Sum of GTIs [s]
livetime	3601.3029798848	Livetime [s]
ontime0	3647.4486505985	Sum of GTIs [s]
ontime1	3647.4076105952	Sum of GTIs [s]
ontime2	3647.3665705919	Sum of GTIs [s]
ontime3	3647.5307306051	Sum of GTIs [s]
ontime6	3647.3255305886	Sum of GTIs [s]
ontime7	3647.4896906018	Sum of GTIs [s]
l2events	123307	Number of level 2 events

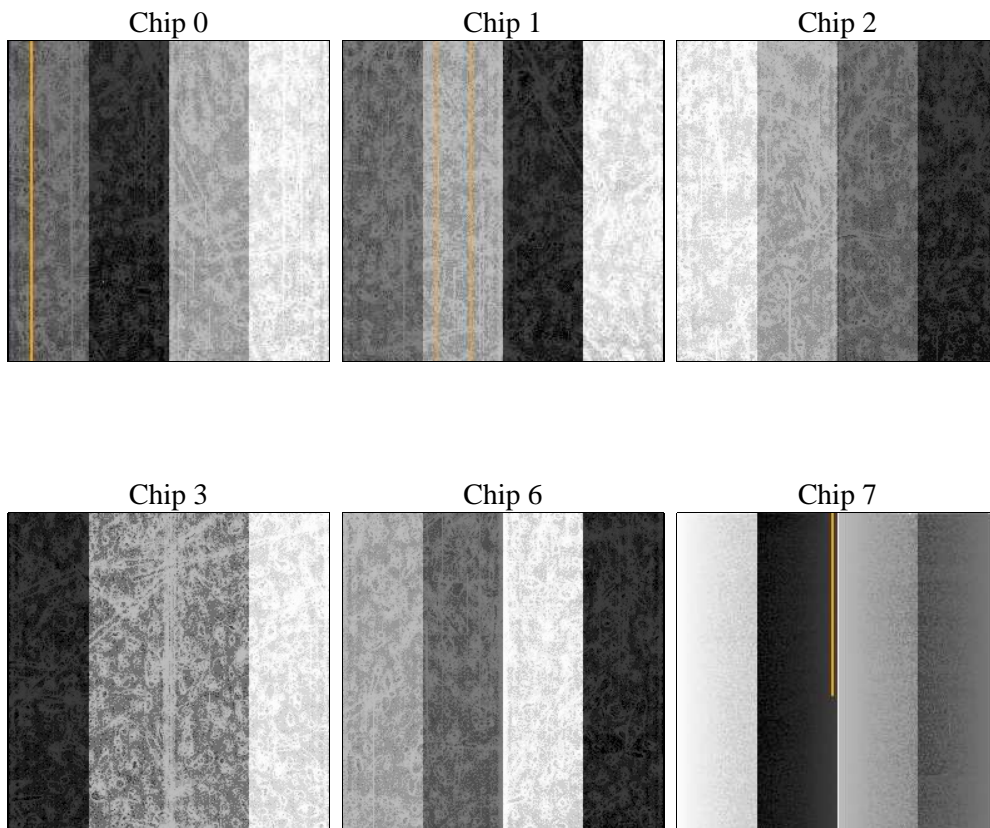
2 OBI

2.1 OBI

2.1.1 Images



2.1.2 Bias



2.1.3 Parameters

obi_num	0	Obi number	sched_exp_time	0.0	[s] Scheduled observation exposure time
ascdsver	8.4.3	Processing system revision	ontime	3647.4896906018	Sum of GTIs [s]
caldsver	4.4.7	 	ontime0	3647.4486505985	Sum of GTIs [s]
date	2012-01-13T12:22:52	Date and time of file creation	ontime1	3647.4076105952	Sum of GTIs [s]
revision	1	Processing version of data	ontime2	3647.3665705919	Sum of GTIs [s]
			ontime3	3647.5307306051	Sum of GTIs [s]
			ontime6	3647.3255305886	Sum of GTIs [s]
			ontime7	3647.4896906018	Sum of GTIs [s]
			l1events	276777	Number of level 1 events

2.1.4 Events

	ccd 0	ccd 1	ccd 2	ccd 3	ccd 6	ccd 7		ccd 0	ccd 1	ccd 2	ccd 3	ccd 6	ccd 7
level 1 events	42548	42151	43237	44657	44999	59185	grade 0 events	10091	9882	10328	10310	10398	5299
rejected events	23222	22731	23780	25367	24761	26263		23%	23%	23%	23%	23%	8%
rejected %	54%	53%	54%	56%	55%	44%	grade 1 events	68	57	65	78	60	70
								0%	0%	0%	0%	0%	0%
							grade 2 events	3629	3803	3434	3468	3720	7134
								8%	9%	7%	7%	8%	12%
							grade 3 events	1336	1267	1334	1330	1327	2894
								3%	3%	3%	2%	2%	4%
							grade 4 events	1235	1332	1425	1352	1382	2819
								2%	3%	3%	3%	3%	4%
							grade 5 events	1530	1596	1464	1685	1595	4150
								3%	3%	3%	3%	3%	7%
							grade 6 events	3059	3151	2950	2845	3429	14802
								7%	7%	6%	6%	7%	25%
							grade 7 events	21600	21063	22237	23589	23088	22017
								50%	49%	51%	52%	51%	37%

2.2 Compared Parameters

Parameter	Planned	Actual	Parameter	Planned	Actual
Instrument	ACIS	ACIS	Obspar format version number	7	7
Detector	ACIS-012367	ACIS-012367	Obspar file type	PREDICTED	ACTUAL
Grating	NONE	NONE	Obspar update status	NONE	UPDATED
Data mode	FAINT	FAINT	Number of optional ACIS chips dropped	0	0
Observation mode	SECONDARY	SECONDARY	On-chip summing requested	N	N
[deg] Pointing RA	0	272.0348725873016	Subarray requested	NONE	NONE
[deg] Pointing Dec	0	30.00529950518205	Alternating exposures requested	N	N
[deg] Pointing Roll	0.0	24.7587703948605	[s] Primary exposure time	3.2	3.2
[mm] SIM focus pos	-1.429586	-1.428180813131781			
[mm] SIM defocus	0.1037507710433287	0.1051558262725154			
[mm] SIM translation stage pos	250.455976	250.466033080201			
[mm] SIM translation stage offset	0	-0.01005468664627074			
[s] Observation start time (MET)	442796223.025429	442796222.00043			
Observation start date	2012-01-12T22:57:03	2012-01-12T22:57:02			
[s] Observation end time (MET)	442804953.97589	442804952.95089			
Observation end date	2012-01-13T01:22:34	2012-01-13T01:22:32			
Read mode	TIMED	TIMED			

2.3 Star Slots

2.4 FID Slots

A Summary

A.1 Status

V&V Scientist	Jen Lauer
V&V Date (YYYY-MM-DD)	2012.01.13
V&V Edition	1
V&V Disposition and Status	OK
V&V Charge Time	3.6474896906018

A.2 Comments