

V&V Reference Report

L2 ASCDS Version : 8.4.3

Observation 54917 - L2 Version 1
Chandra X-Ray Center

L2 Processing Date : Jan 21 2012

Contents

1	Front	2
2	OBI	3
2.1	OBI	3
2.1.1	Images	3
2.1.2	Bias	3
2.1.3	Parameters	4
2.1.4	Events	4
2.2	Compared Parameters	5
2.3	Star Slots	6
2.4	FID Slots	6
A	Summary	7
A.1	Status	7
A.2	Comments	7

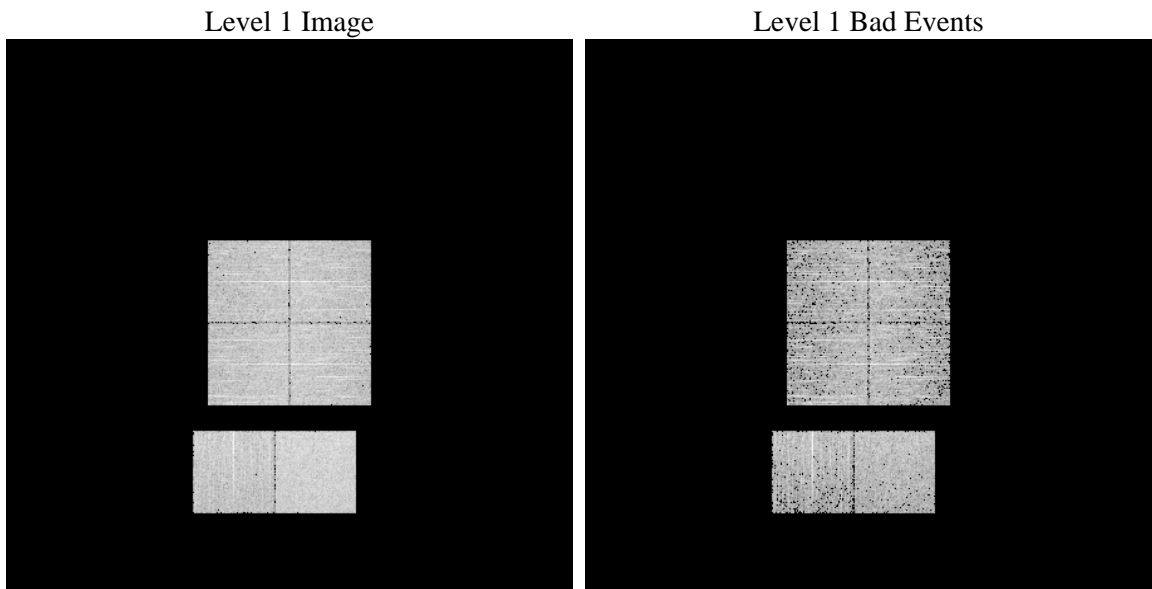
1 Front

seq_num	 	Sequence number
obs_id	54917	Observation id
title	ACIS-012367 diagnostics	Proposal title
observer	CHANDRA engineering request/realtime commanding	Principal investig
object	 	Source name
dtcycle	0	
cycle	P	events from which exps? Prim/Second/Both
ra_targ	0.0	Observer's specified target RA [deg]
dec_targ	0.0	Observer's specified target Dec [deg]
ra_nom	254.94321562571	Nominal RA [deg]
dec_nom	-62.98713064328	Nominal Dec [deg]
roll_nom	120.81680236384	Nominal Roll [deg]
revision	1	Processing version of data
ontime	3343.9999876022	Sum of GTIs [s]
livetime	3301.6562462442	Livetime [s]
ontime0	3343.9999876022	Sum of GTIs [s]
ontime1	3343.9999876022	Sum of GTIs [s]
ontime2	3343.9999876022	Sum of GTIs [s]
ontime3	3343.9999876022	Sum of GTIs [s]
ontime6	3343.9999876022	Sum of GTIs [s]
ontime7	3343.9999876022	Sum of GTIs [s]
l2events	112120	Number of level 2 events

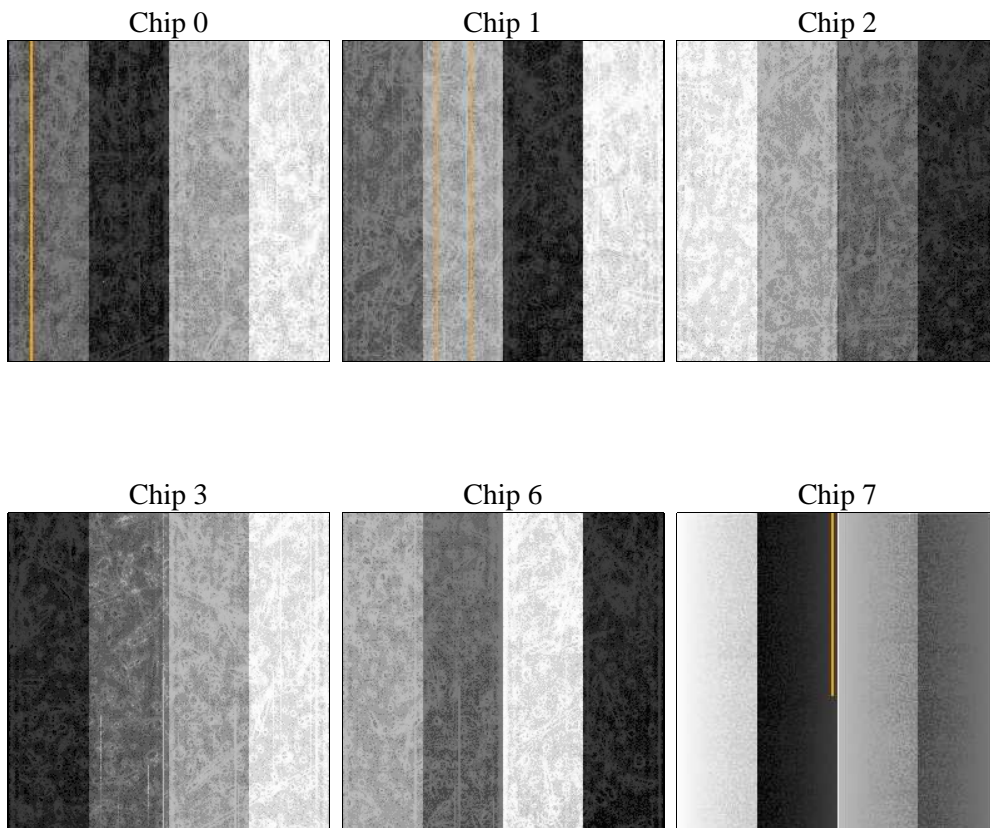
2 OBI

2.1 OBI

2.1.1 Images



2.1.2 Bias



2.1.3 Parameters

obi_num	0	Obi number	sched_exp_time	0.0	[s] Scheduled observation exposure time
ascdsver	8.4.3	Processing system revision	ontime	3343.9999876022	Sum of GTIs [s]
caldsver	4.4.7	 	ontime0	3343.9999876022	Sum of GTIs [s]
date	2012-01-22T03:32:28	Date and time of file creation	ontime1	3343.9999876022	Sum of GTIs [s]
revision	1	Processing version of data	ontime2	3343.9999876022	Sum of GTIs [s]
			ontime3	3343.9999876022	Sum of GTIs [s]
			ontime6	3343.9999876022	Sum of GTIs [s]
			ontime7	3343.9999876022	Sum of GTIs [s]
			l1events	255696	Number of level 1 events

2.1.4 Events

	ccd 0	ccd 1	ccd 2	ccd 3	ccd 6	ccd 7		ccd 0	ccd 1	ccd 2	ccd 3	ccd 6	ccd 7
level 1 events	38641	39465	40932	41317	41414	53927	grade 0 events	9165	8847	9539	9401	9345	4926
rejected events	20972	21915	23111	23600	23207	24055		23%	22%	23%	22%	22%	9%
rejected %	54%	55%	56%	57%	56%	44%	grade 1 events	60	57	64	72	55	40
								0%	0%	0%	0%	0%	0%
							grade 2 events	3354	3471	3148	3153	3379	6434
								8%	8%	7%	7%	8%	11%
							grade 3 events	1269	1179	1181	1261	1214	2660
								3%	2%	2%	3%	2%	4%
							grade 4 events	1158	1149	1282	1280	1191	2604
								2%	2%	3%	3%	2%	4%
							grade 5 events	1369	1407	1353	1461	1497	3805
								3%	3%	3%	3%	3%	7%
							grade 6 events	2757	2927	2716	2634	3108	13285
								7%	7%	6%	6%	7%	24%
							grade 7 events	19509	20428	21649	22055	21625	20173
								50%	51%	52%	53%	52%	37%

2.2 Compared Parameters

Parameter	Planned	Actual	Parameter	Planned	Actual
Instrument	ACIS	ACIS	Obspar format version number	7	7
Detector	ACIS-012367	ACIS-012367	Obspar file type	PREDICTED	ACTUAL
Grating	NONE	NONE	Obspar update status	NONE	UPDATED
Data mode	FAINT	FAINT	Number of optional ACIS chips dropped	0	0
Observation mode	SECONDARY	SECONDARY	On-chip summing requested	N	N
[deg] Pointing RA	0	254.9432156257088	Subarray requested	NONE	NONE
[deg] Pointing Dec	0	-62.98713064327951	Alternating exposures requested	N	N
[deg] Pointing Roll	0.0	120.8168023638402	[s] Primary exposure time	3.2	3.2
[mm] SIM focus pos	-1.429586	-1.428180813131781			
[mm] SIM defocus	0.1037507710433287	0.1051558262725154			
[mm] SIM translation stage pos	250.455976	250.466033080201			
[mm] SIM translation stage offset	0	-0.01005468664627074			
[s] Observation start time (MET)	443484832.411822	443484831.38682			
Observation start date	2012-01-20T22:13:52	2012-01-20T22:13:51			
[s] Observation end time (MET)	443490219.812107	443490218.78711			
Observation end date	2012-01-20T23:43:40	2012-01-20T23:43:38			
Read mode	TIMED	TIMED			

2.3 Star Slots

2.4 FID Slots

A Summary

A.1 Status

V&V Scientist	Joy Nichols
V&V Date (YYYY-MM-DD)	2012.01.23
V&V Edition	1
V&V Disposition and Status	OK
V&V Charge Time	3.3439999876022

A.2 Comments