

# V&V Reference Report

## L2 ASCDS Version : 8.4.3

Observation 54910 - L2 Version 1  
Chandra X-Ray Center

L2 Processing Date : Jan 26 2012

## Contents

<b>1</b>	<b>Front</b>	<b>2</b>
<b>2</b>	<b>OBI</b>	<b>3</b>
2.1	OBI . . . . .	3
2.1.1	Images . . . . .	3
2.1.2	Bias . . . . .	3
2.1.3	Parameters . . . . .	4
2.1.4	Events . . . . .	4
2.2	Compared Parameters . . . . .	5
2.3	Star Slots . . . . .	6
2.4	FID Slots . . . . .	6
<b>A</b>	<b>Summary</b>	<b>7</b>
A.1	Status . . . . .	7
A.2	Comments . . . . .	7

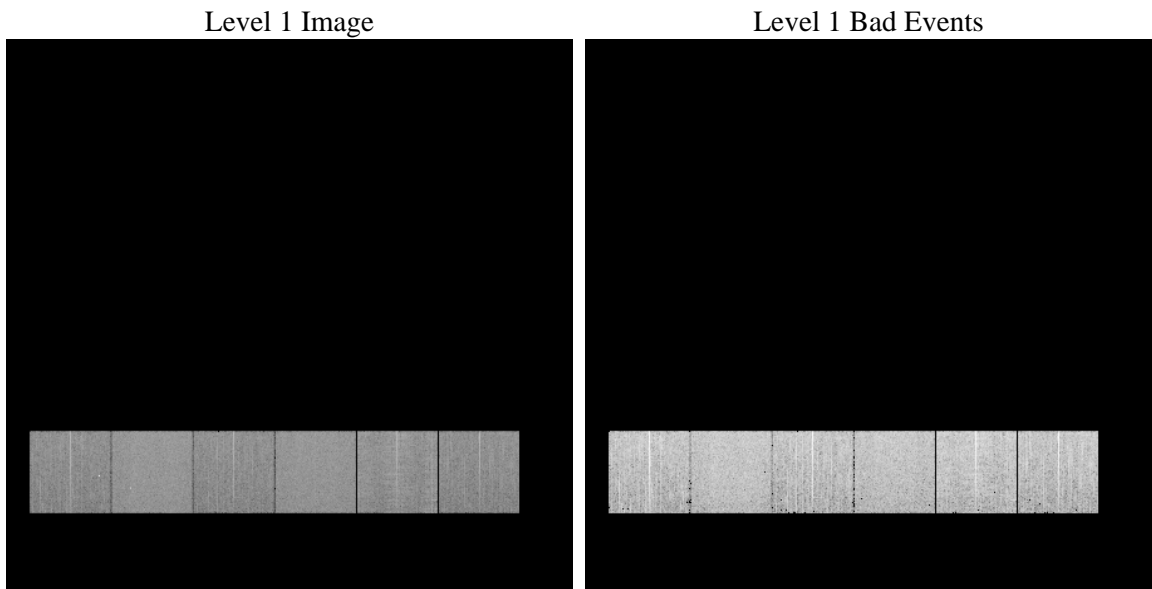
# 1 Front

seq_num	&#160	Sequence number
obs_id	54910	Observation id
title	ACIS-456789 diagnostics	Proposal title
observer	CHANDRA engineering request/realtime commanding	Principal investig
object	&#160	Source name
dtcycle	0	&#160
cycle	P	events from which exps? Prim/Second/Both
ra_targ	0.0	Observer's specified target RA [deg]
dec_targ	0.0	Observer's specified target Dec [deg]
ra_nom	350.02740561542	Nominal RA [deg]
dec_nom	11.989615682942	Nominal Dec [deg]
roll_nom	306.1118935003	Nominal Roll [deg]
revision	1	Processing version of data
ontime	7219.199973166	Sum of GTIs [s]
livetime	7127.7861162254	Livetime [s]
ontime4	7219.0918809175	Sum of GTIs [s]
ontime5	7219.1739609241	Sum of GTIs [s]
ontime6	7219.1329209208	Sum of GTIs [s]
ontime7	7219.199973166	Sum of GTIs [s]
ontime8	7219.0508409142	Sum of GTIs [s]
ontime9	7219.199973166	Sum of GTIs [s]
l2events	266339	Number of level 2 events

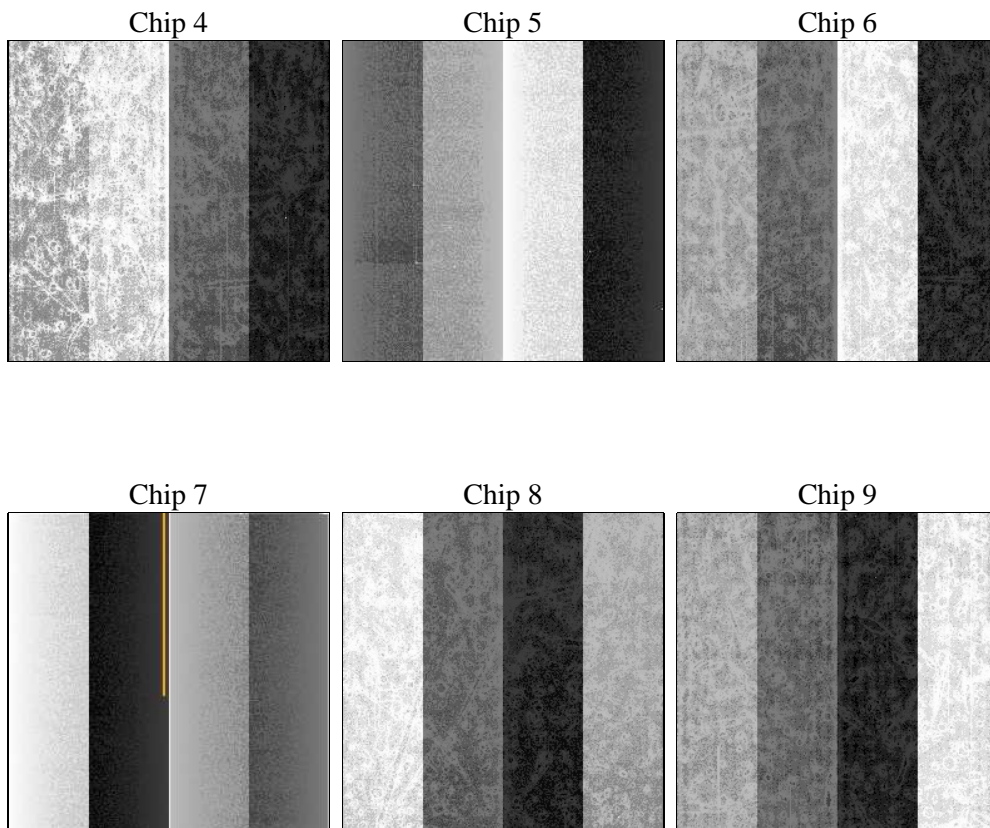
## 2 OBI

### 2.1 OBI

#### 2.1.1 Images



#### 2.1.2 Bias



### 2.1.3 Parameters

obi_num	1	Obi number	sched_exp_time	0.0	[s] Scheduled observation exposure time
ascdsver	8.4.3	Processing system revision	ontime	7219.199973166	Sum of GTIs [s]
caldsver	4.4.7	&#160	ontime4	7219.0918809175	Sum of GTIs [s]
date	2012-01-26T21:05:05	Date and time of file creation	ontime5	7219.1739609241	Sum of GTIs [s]
revision	1	Processing version of data	ontime6	7219.1329209208	Sum of GTIs [s]
			ontime7	7219.199973166	Sum of GTIs [s]
			ontime8	7219.0508409142	Sum of GTIs [s]
			ontime9	7219.199973166	Sum of GTIs [s]
			l1events	584742	Number of level 1 events

### 2.1.4 Events

	ccd 4	ccd 5	ccd 6	ccd 7	ccd 8	ccd 9		ccd 4	ccd 5	ccd 6	ccd 7	ccd 8	ccd 9
level 1 events	86627	113878	86268	109160	102773	86036	grade 0 events	21934	7384	20350	10487	22775	20022
rejected events	48223	49882	46500	47002	54031	47678		25%	6%	23%	9%	22%	23%
rejected %	55%	43%	53%	43%	52%	55%	grade 1 events	160	119	108	92	145	115
								0%	0%	0%	0%	0%	0%
							grade 2 events	6161	22845	7359	13297	9499	6989
								7%	20%	8%	12%	9%	8%
							grade 3 events	2673	2659	2549	5469	3626	2588
								3%	2%	2%	5%	3%	3%
							grade 4 events	2600	2614	2638	5389	3560	2563
								3%	2%	3%	4%	3%	2%
							grade 5 events	2896	6375	2976	7563	4157	3354
								3%	5%	3%	6%	4%	3%
							grade 6 events	5054	28513	6884	27543	9294	6209
								5%	25%	7%	25%	9%	7%
							grade 7 events	45149	43369	43404	39320	49717	44196
								52%	38%	50%	36%	48%	51%

## 2.2 Compared Parameters

Parameter	Planned	Actual	Parameter	Planned	Actual
Instrument	ACIS	ACIS	Obspar format version number	7	7
Detector	ACIS-456789	ACIS-456789	Obspar file type	PREDICTED	ACTUAL
Grating	NONE	NONE	Obspar update status	NONE	UPDATED
Data mode	FAINT	FAINT	Number of optional ACIS chips dropped	0	0
Observation mode	SECONDARY	SECONDARY	On-chip summing requested	N	N
[deg] Pointing RA	0	350.0274056154182	Subarray requested	NONE	NONE
[deg] Pointing Dec	0	11.9896156829416	Alternating exposures requested	N	N
[deg] Pointing Roll	0.0	306.1118935003017	[s] Primary exposure time	3.2	3.2
[mm] SIM focus pos	-1.429586	-0.6828225247311905			
[mm] SIM defocus	0.1037507710433287	0.8505141146731063			
[mm] SIM translation stage pos	250.455976	250.466033080201			
[mm] SIM translation stage offset	0	-0.01005468664627074			
[s] Observation start time (MET)	443943724.936094	443943723.91109			
Observation start date	2012-01-26T05:42:05	2012-01-26T05:42:03			
[s] Observation end time (MET)	443952867.936577	443952866.91158			
Observation end date	2012-01-26T08:14:28	2012-01-26T08:14:26			
Read mode	TIMED	TIMED			

## 2.3 Star Slots

## 2.4 FID Slots

## **A Summary**

### **A.1 Status**

V&V Scientist	Jen Lauer
V&V Date (YYYY-MM-DD)	2012.01.27
V&V Edition	1
V&V Disposition and Status	OK
V&V Charge Time	7.219199973166

### **A.2 Comments**