

V&V Reference Report

L2 ASCDS Version : 8.4.3

Observation 54873 - L2 Version 1
Chandra X-Ray Center

L2 Processing Date : Feb 6 2012

Contents

1	Front	2
2	OBI	3
2.1	OBI	3
2.1.1	Images	3
2.1.2	Bias	3
2.1.3	Parameters	4
2.1.4	Events	4
2.2	Compared Parameters	5
2.3	Star Slots	6
2.4	FID Slots	6
A	Summary	7
A.1	Status	7
A.2	Comments	7

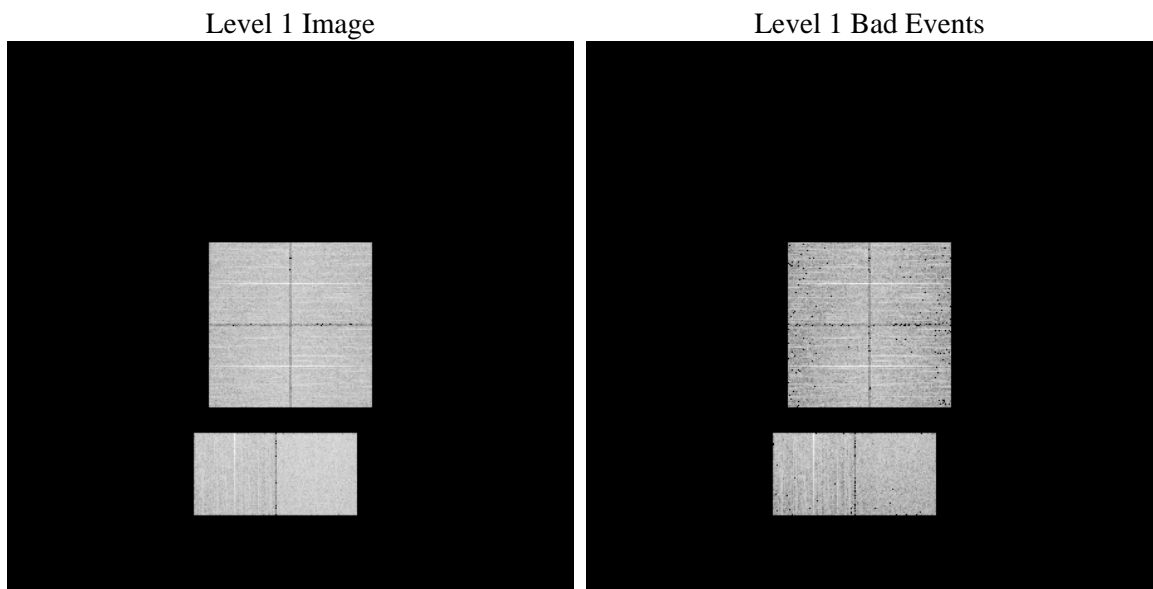
1 Front

seq_num	 	Sequence number
obs_id	54873	Observation id
title	ACIS-012367 diagnostics	Proposal title
observer	CHANDRA engineering request/realtime commanding	Principal investig
object	 	Source name
dtcycle	0	
cycle	P	events from which exps? Prim/Second/Both
ra_targ	0.0	Observer's specified target RA [deg]
dec_targ	0.0	Observer's specified target Dec [deg]
ra_nom	346.02703920441	Nominal RA [deg]
dec_nom	30.000729577574	Nominal Dec [deg]
roll_nom	326.4343169925	Nominal Roll [deg]
revision	1	Processing version of data
ontime	5401.5999799371	Sum of GTIs [s]
livetime	5333.2016685381	Livetime [s]
ontime0	5401.5999799371	Sum of GTIs [s]
ontime1	5401.5999799371	Sum of GTIs [s]
ontime2	5401.5999799371	Sum of GTIs [s]
ontime3	5401.5999799371	Sum of GTIs [s]
ontime6	5401.5999799371	Sum of GTIs [s]
ontime7	5401.5999799371	Sum of GTIs [s]
l2events	173732	Number of level 2 events

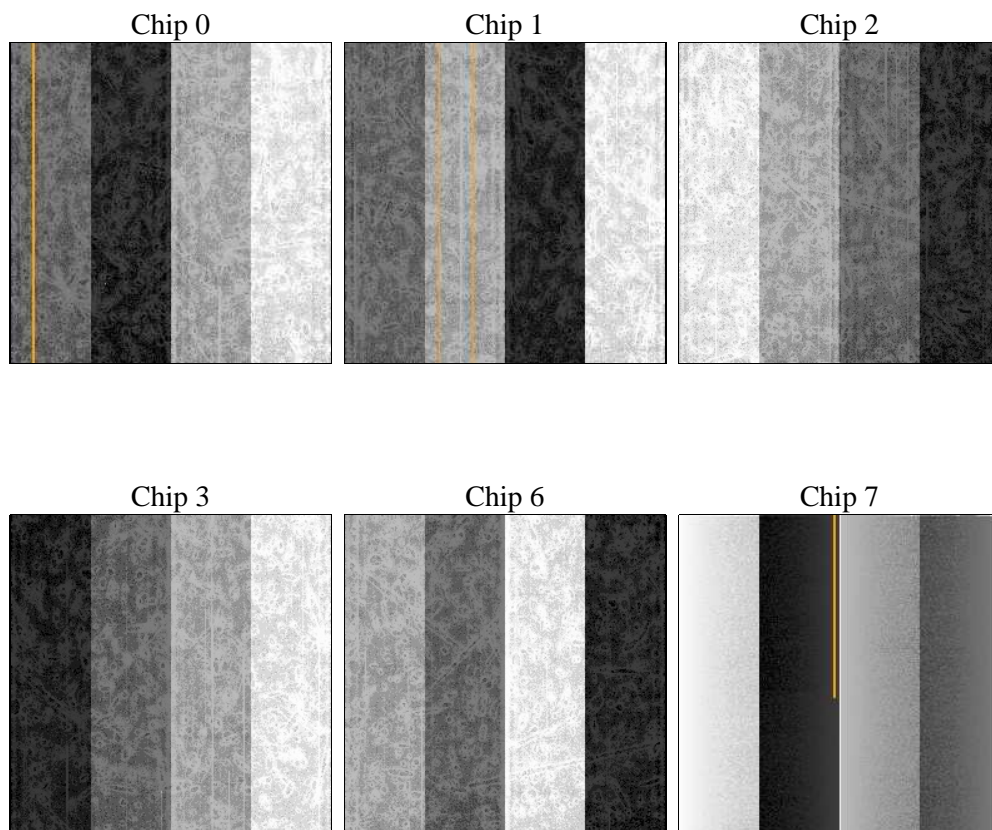
2 OBI

2.1 OBI

2.1.1 Images



2.1.2 Bias



2.1.3 Parameters

obi_num	0	Obi number	sched_exp_time	0.0	[s] Scheduled observation exposure time
ascdsver	8.4.3	Processing system revision	ontime	5401.5999799371	Sum of GTIs [s]
caldsver	4.4.7	 	ontime0	5401.5999799371	Sum of GTIs [s]
date	2012-02-06T06:10:58	Date and time of file creation	ontime1	5401.5999799371	Sum of GTIs [s]
revision	1	Processing version of data	ontime2	5401.5999799371	Sum of GTIs [s]
			ontime3	5401.5999799371	Sum of GTIs [s]
			ontime6	5401.5999799371	Sum of GTIs [s]
			ontime7	5401.5999799371	Sum of GTIs [s]
			l1events	404582	Number of level 1 events

2.1.4 Events

	ccd 0	ccd 1	ccd 2	ccd 3	ccd 6	ccd 7		ccd 0	ccd 1	ccd 2	ccd 3	ccd 6	ccd 7
level 1 events	62059	62638	62422	65095	67627	84741	grade 0 events	14002	12769	14449	14582	12947	6985
rejected events	34785	35380	35344	37710	39423	38263		22%	20%	23%	22%	19%	8%
rejected %	56%	56%	56%	57%	58%	45%	grade 1 events	76	71	84	101	59	73
								0%	0%	0%	0%	0%	0%
							grade 2 events	5320	6467	4790	4975	6822	10332
								8%	10%	7%	7%	10%	12%
							grade 3 events	1802	1712	1876	1842	1609	3839
								2%	2%	3%	2%	2%	4%
							grade 4 events	1781	1615	1842	1858	1658	3757
								2%	2%	2%	2%	2%	4%
							grade 5 events	2070	2022	1952	2195	2189	5420
								3%	3%	3%	3%	3%	6%
							grade 6 events	4386	4712	4133	4149	5190	21591
								7%	7%	6%	6%	7%	25%
							grade 7 events	32622	33270	33296	35393	37153	32744
								52%	53%	53%	54%	54%	38%

2.2 Compared Parameters

Parameter	Planned	Actual	Parameter	Planned	Actual
Instrument	ACIS	ACIS	Obspar format version number	7	7
Detector	ACIS-012367	ACIS-012367	Obspar file type	PREDICTED	ACTUAL
Grating	NONE	NONE	Obspar update status	NONE	UPDATED
Data mode	FAINT	FAINT	Number of optional ACIS chips dropped	0	0
Observation mode	SECONDARY	SECONDARY	On-chip summing requested	N	N
[deg] Pointing RA	0	346.0270392044127	Subarray requested	NONE	NONE
[deg] Pointing Dec	0	30.00072957757387	Alternating exposures requested	N	N
[deg] Pointing Roll	0.0	326.4343169924985	[s] Primary exposure time	3.2	3.2
[mm] SIM focus pos	-1.429586	-1.428180813131781			
[mm] SIM defocus	0.1037507710433287	0.1051558262725154			
[mm] SIM translation stage pos	250.455976	250.466033080201			
[mm] SIM translation stage offset	0	-0.01005468664627074			
[s] Observation start time (MET)	444855314.884325	444855313.85933			
Observation start date	2012-02-05T18:55:15	2012-02-05T18:55:13			
[s] Observation end time (MET)	444864000.734785	444863999.70979			
Observation end date	2012-02-05T21:20:01	2012-02-05T21:19:59			
Read mode	TIMED	TIMED			

2.3 Star Slots

2.4 FID Slots

A Summary

A.1 Status

V&V Scientist	Joy Nichols
V&V Date (YYYY-MM-DD)	2012.02.06
V&V Edition	1
V&V Disposition and Status	OK
V&V Charge Time	5.4015999799371

A.2 Comments