

V&V Reference Report

L2 ASCDS Version : 8.4.3

Observation 54848 - L2 Version 1
Chandra X-Ray Center

L2 Processing Date : Feb 19 2012

Contents

| | | |
|----------|-------------------------------|----------|
| 1 | Front | 2 |
| 2 | OBI | 3 |
| 2.1 | OBI | 3 |
| 2.1.1 | Images | 3 |
| 2.1.2 | Bias | 3 |
| 2.1.3 | Parameters | 4 |
| 2.1.4 | Events | 4 |
| 2.2 | Compared Parameters | 5 |
| 2.3 | Star Slots | 6 |
| 2.4 | FID Slots | 6 |
| A | Summary | 7 |
| A.1 | Status | 7 |
| A.2 | Comments | 7 |

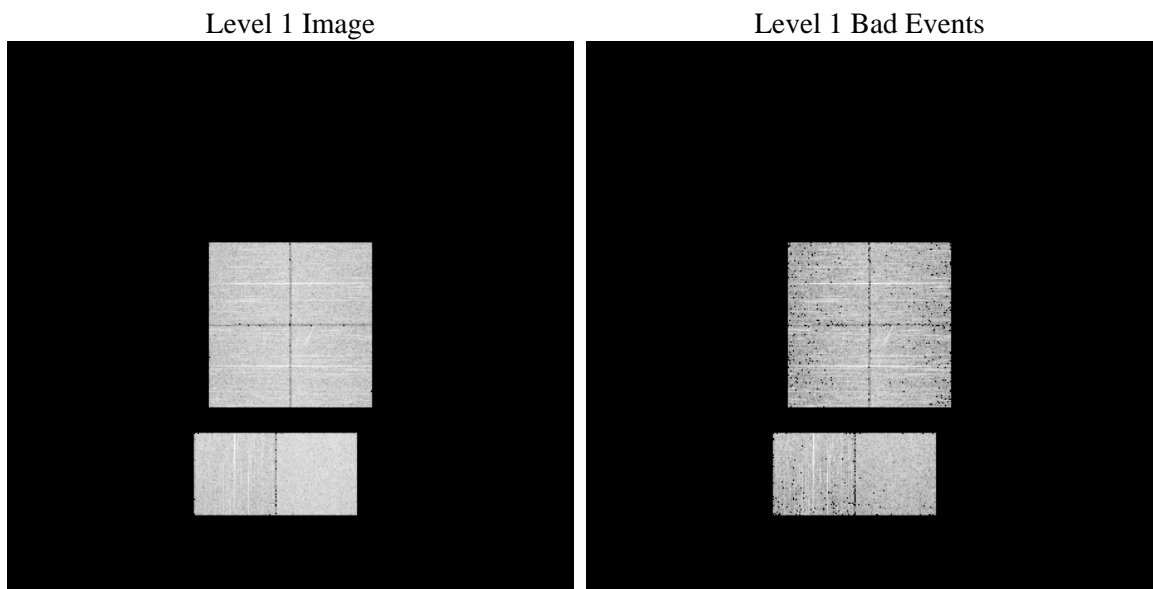
1 Front

| | | |
|----------|---|---|
| seq_num | | Sequence number |
| obs_id | 54848 | Observation id |
| title | ACIS-012367 diagnostics | Proposal title |
| observer | CHANDRA engineering request/realtime commanding | Principal investig |
| object | | Source name |
| dtcycle | 0 | |
| cycle | P | events from which exps? Prim/Second/Both |
| ra_targ | 0.0 | Observer's specified target RA [deg] |
| dec_targ | 0.0 | Observer's specified target Dec [deg] |
| ra_nom | 143.02871024023 | Nominal RA [deg] |
| dec_nom | -14.992232503268 | Nominal Dec [deg] |
| roll_nom | 342.29922257955 | Nominal Roll [deg] |
| revision | 1 | Processing version of data |
| ontime | 4966.3999815583 | Sum of GTIs [s] |
| livetime | 4903.5124345848 | Livetime [s] |
| ontime0 | 4966.3999815583 | Sum of GTIs [s] |
| ontime1 | 4966.3999815583 | Sum of GTIs [s] |
| ontime2 | 4966.3999815583 | Sum of GTIs [s] |
| ontime3 | 4966.3999815583 | Sum of GTIs [s] |
| ontime6 | 4966.3999815583 | Sum of GTIs [s] |
| ontime7 | 4966.3999815583 | Sum of GTIs [s] |
| l2events | 161072 | Number of level 2 events |

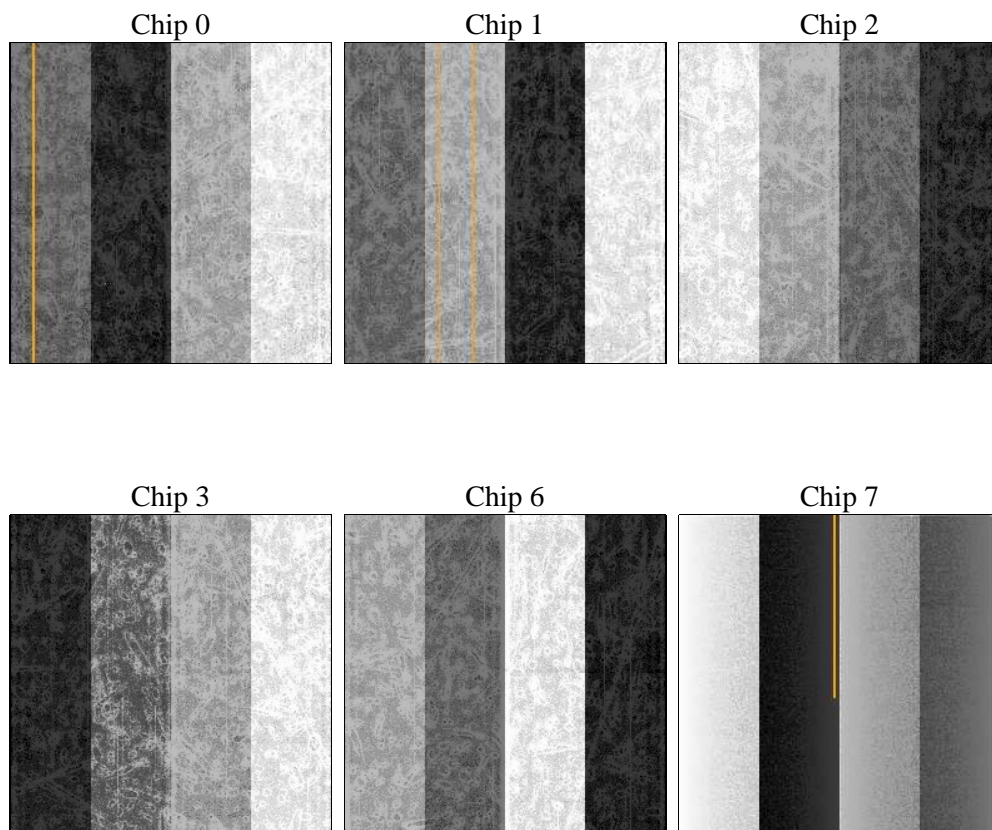
2 OBI

2.1 OBI

2.1.1 Images



2.1.2 Bias



2.1.3 Parameters

| | | | | | |
|----------|---------------------|--------------------------------|----------------|-----------------|---|
| obi_num | 0 | Obi number | sched_exp_time | 0.0 | [s] Scheduled observation exposure time |
| ascdsver | 8.4.3 | Processing system revision | ontime | 4966.3999815583 | Sum of GTIs [s] |
| caldsver | 4.4.8 | | ontime0 | 4966.3999815583 | Sum of GTIs [s] |
| date | 2012-02-19T15:54:58 | Date and time of file creation | ontime1 | 4966.3999815583 | Sum of GTIs [s] |
| revision | 1 | Processing version of data | ontime2 | 4966.3999815583 | Sum of GTIs [s] |
| | | | ontime3 | 4966.3999815583 | Sum of GTIs [s] |
| | | | ontime6 | 4966.3999815583 | Sum of GTIs [s] |
| | | | ontime7 | 4966.3999815583 | Sum of GTIs [s] |
| | | | l1events | 359517 | Number of level 1 events |

2.1.4 Events

| | ccd 0 | ccd 1 | ccd 2 | ccd 3 | ccd 6 | ccd 7 | | ccd 0 | ccd 1 | ccd 2 | ccd 3 | ccd 6 | ccd 7 |
|-----------------|-------|-------|-------|-------|-------|-------|----------------|-------|-------|-------|-------|-------|-------|
| level 1 events | 55045 | 55491 | 55866 | 58472 | 58729 | 75914 | grade 0 events | 13299 | 12975 | 13795 | 13586 | 13581 | 7003 |
| rejected events | 29750 | 30140 | 30281 | 33179 | 32156 | 33637 | | 24% | 23% | 24% | 23% | 23% | 9% |
| rejected % | 54% | 54% | 54% | 56% | 54% | 44% | grade 1 events | 86 | 88 | 84 | 80 | 79 | 71 |
| | | | | | | | | 0% | 0% | 0% | 0% | 0% | 0% |
| | | | | | | | grade 2 events | 4703 | 4879 | 4551 | 4439 | 4954 | 9056 |
| | | | | | | | | 8% | 8% | 8% | 7% | 8% | 11% |
| | | | | | | | grade 3 events | 1841 | 1657 | 1766 | 1755 | 1769 | 3970 |
| | | | | | | | | 3% | 2% | 3% | 3% | 3% | 5% |
| | | | | | | | grade 4 events | 1566 | 1732 | 1703 | 1757 | 1785 | 3716 |
| | | | | | | | | 2% | 3% | 3% | 3% | 3% | 4% |
| | | | | | | | grade 5 events | 1958 | 1989 | 1871 | 2186 | 2152 | 5179 |
| | | | | | | | | 3% | 3% | 3% | 3% | 3% | 6% |
| | | | | | | | grade 6 events | 3886 | 4108 | 3770 | 3756 | 4484 | 18532 |
| | | | | | | | | 7% | 7% | 6% | 6% | 7% | 24% |
| | | | | | | | grade 7 events | 27706 | 28063 | 28326 | 30913 | 29925 | 28387 |
| | | | | | | | | 50% | 50% | 50% | 52% | 50% | 37% |

2.2 Compared Parameters

| Parameter | Planned | Actual | Parameter | Planned | Actual |
|-----------------------------------|---------------------|----------------------|---------------------------------------|-----------|---------|
| Instrument | ACIS | ACIS | Obspar format version number | 7 | 7 |
| Detector | ACIS-012367 | ACIS-012367 | Obspar file type | PREDICTED | ACTUAL |
| Grating | NONE | NONE | Obspar update status | NONE | UPDATED |
| Data mode | FAINT | FAINT | Number of optional ACIS chips dropped | 0 | 0 |
| Observation mode | SECONDARY | SECONDARY | On-chip summing requested | N | N |
| [deg] Pointing RA | 0 | 143.0287102402322 | Subarray requested | NONE | NONE |
| [deg] Pointing Dec | 0 | -14.99223250326793 | Alternating exposures requested | N | N |
| [deg] Pointing Roll | 0.0 | 342.2992225795518 | [s] Primary exposure time | 3.2 | 3.2 |
| [mm] SIM focus pos | -1.429586 | -1.428180813131781 | | | |
| [mm] SIM defocus | 0.1037507710433287 | 0.1051558262725154 | | | |
| [mm] SIM translation stage pos | 250.455976 | 250.466033080201 | | | |
| [mm] SIM translation stage offset | 0 | -0.01005468664627074 | | | |
| [s] Observation start time (MET) | 445971956.093456 | 445971955.06846 | | | |
| Observation start date | 2012-02-18T17:05:56 | 2012-02-18T17:05:55 | | | |
| [s] Observation end time (MET) | 445984044.944098 | 445984043.9191 | | | |
| Observation end date | 2012-02-18T20:27:25 | 2012-02-18T20:27:23 | | | |
| Read mode | TIMED | TIMED | | | |

2.3 Star Slots

2.4 FID Slots

A Summary

A.1 Status

| | |
|----------------------------|-----------------|
| V&V Scientist | Jen Lauer |
| V&V Date (YYYY-MM-DD) | 2012.02.21 |
| V&V Edition | 1 |
| V&V Disposition and Status | OK |
| V&V Charge Time | 4.9663999815583 |

A.2 Comments