

V&V Reference Report

L2 ASCDS Version : 8.4.3

Observation 54845 - L2 Version 1
Chandra X-Ray Center

L2 Processing Date : Feb 19 2012

Contents

1	Front	2
2	OBI	3
2.1	OBI	3
2.1.1	Images	3
2.1.2	Bias	3
2.1.3	Parameters	4
2.1.4	Events	4
2.2	Compared Parameters	5
2.3	Star Slots	6
2.4	FID Slots	6
A	Summary	7
A.1	Status	7
A.2	Comments	7

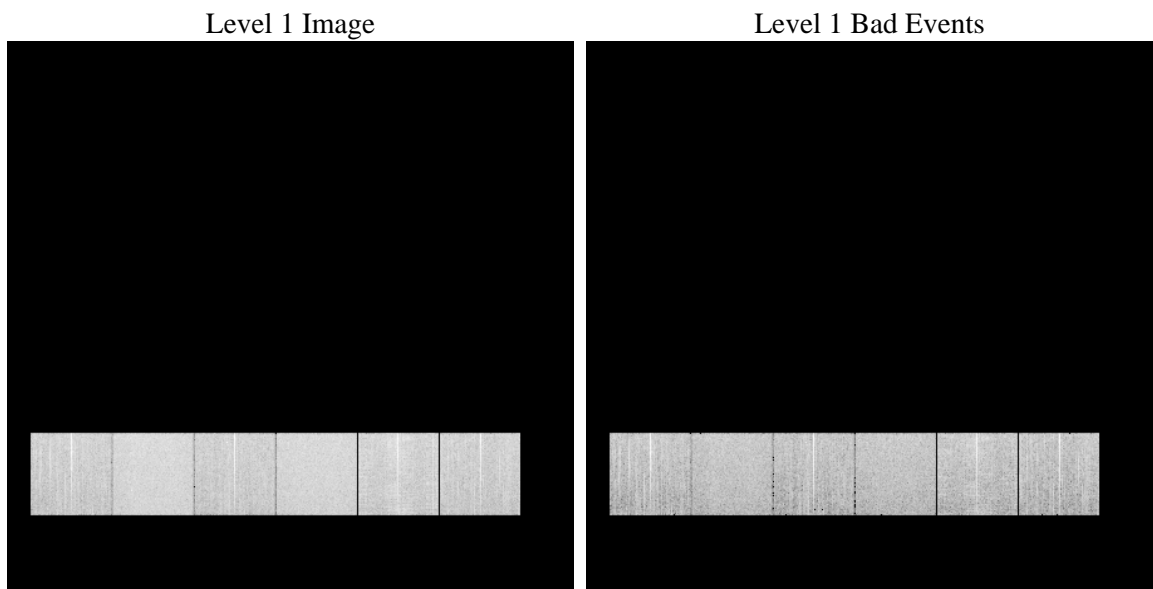
1 Front

seq_num	 	Sequence number
obs_id	54845	Observation id
title	ACIS-456789 diagnostics	Proposal title
observer	CHANDRA engineering request/realtime commanding	Principal investig
object	 	Source name
dtcycle	0	
cycle	P	events from which exps? Prim/Second/Both
ra_targ	0.0	Observer's specified target RA [deg]
dec_targ	0.0	Observer's specified target Dec [deg]
ra_nom	1.8297320071823	Nominal RA [deg]
dec_nom	-34.426677867827	Nominal Dec [deg]
roll_nom	236.31555025079	Nominal Roll [deg]
revision	1	Processing version of data
ontime	8213.2953622341	Sum of GTIs [s]
livetime	8109.2936709048	Livetime [s]
ontime4	8213.1722422242	Sum of GTIs [s]
ontime5	8213.2543222308	Sum of GTIs [s]
ontime6	8213.2132822275	Sum of GTIs [s]
ontime7	8213.2953622341	Sum of GTIs [s]
ontime8	8213.1312022209	Sum of GTIs [s]
ontime9	8213.3364022374	Sum of GTIs [s]
l2events	297700	Number of level 2 events

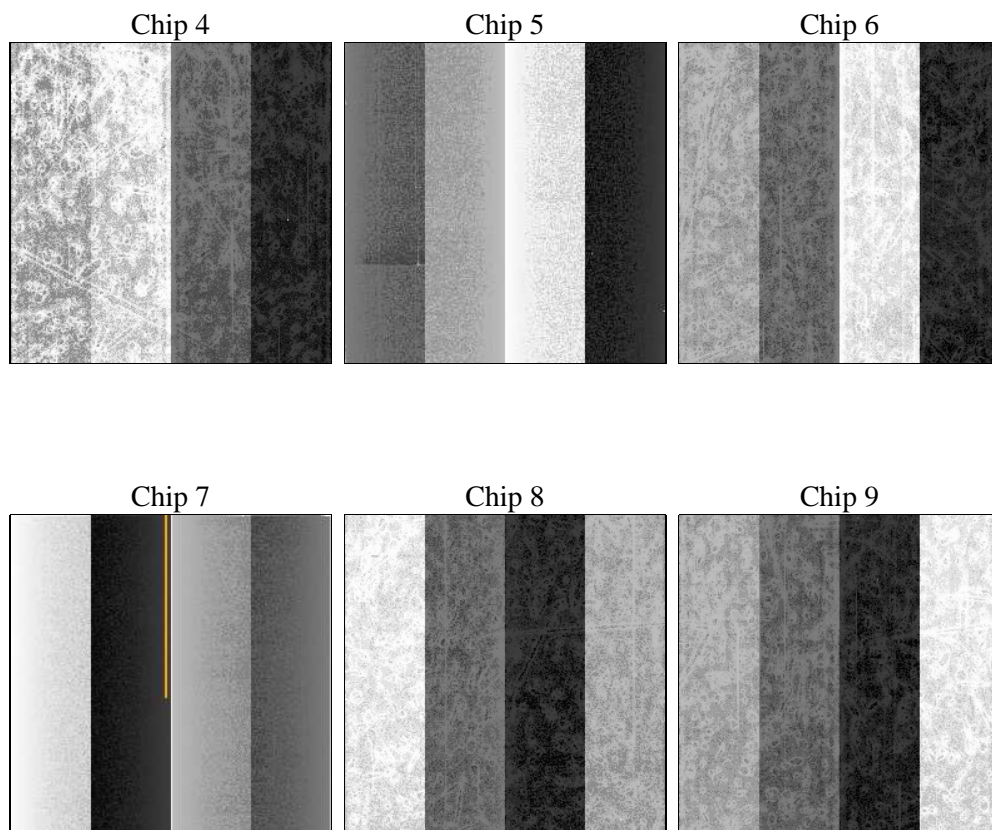
2 OBI

2.1 OBI

2.1.1 Images



2.1.2 Bias



2.1.3 Parameters

obi_num	0	Obi number	sched_exp_time	0.0	[s] Scheduled observation exposure time
ascdsver	8.4.3	Processing system revision	ontime	8213.2953622341	Sum of GTIs [s]
caldsver	4.4.8	 	ontime4	8213.1722422242	Sum of GTIs [s]
date	2012-02-19T19:32:41	Date and time of file creation	ontime5	8213.2543222308	Sum of GTIs [s]
revision	1	Processing version of data	ontime6	8213.2132822275	Sum of GTIs [s]
			ontime7	8213.2953622341	Sum of GTIs [s]
			ontime8	8213.1312022209	Sum of GTIs [s]
			ontime9	8213.3364022374	Sum of GTIs [s]
			l1events	691035	Number of level 1 events

2.1.4 Events

	ccd 4	ccd 5	ccd 6	ccd 7	ccd 8	ccd 9		ccd 4	ccd 5	ccd 6	ccd 7	ccd 8	ccd 9
level 1 events	103785	135135	101491	128728	119647	102249	grade 0 events	23425	8486	22918	11679	26389	23138
rejected events	62804	61727	57654	59193	65049	59384		22%	6%	22%	9%	22%	22%
rejected %	60%	45%	56%	45%	54%	58%	grade 1 events	175	120	132	117	162	140
								0%	0%	0%	0%	0%	0%
							grade 2 events	6994	26847	8585	15540	10796	7848
								6%	19%	8%	12%	9%	7%
							grade 3 events	3048	3039	2926	6417	4374	3076
								2%	2%	2%	4%	3%	3%
							grade 4 events	3082	3153	3029	6269	4254	2991
								2%	2%	2%	4%	3%	2%
							grade 5 events	3454	7430	3557	8891	4694	3961
								3%	5%	3%	6%	3%	3%
							grade 6 events	5664	34108	7783	31823	10402	7072
								5%	25%	7%	24%	8%	6%
							grade 7 events	57943	51952	52561	47992	58576	54023
								55%	38%	51%	37%	48%	52%

2.2 Compared Parameters

Parameter	Planned	Actual
Instrument	ACIS	ACIS
Detector	ACIS-456789	ACIS-456789
Grating	NONE	NONE
Data mode	FAINT	FAINT
Observation mode	SECONDARY	SECONDARY
[deg] Pointing RA	0	1.829732007182255
[deg] Pointing Dec	0	-34.42667786782745
[deg] Pointing Roll	0.0	236.3155502507862
SIM focus pos (mm)	-1.4281808131	-1.4281808131
[mm] SIM defocus	0.1051557500557434	0.1051557500557434
SIM translation stage pos (mm)	250.4660330802	250.4660330802
[mm] SIM translation stage offset	-0.01005726120527584	-0.01005726120527584
[s] Observation start time (MET)	445999055.044894	445999055.044894
Observation start date	2012-02-19T00:37:35	2012-02-19T00:37:35
[s] Observation end time (MET)	446009052.820355	446009052.820355
Observation end date	2012-02-19T03:24:13	2012-02-19T03:24:12
Read mode	TIMED	TIMED

Parameter	Planned	Actual
Obspar format version number	7	7
Obspar file type	PREDICTED	ACTUAL
Obspar update status	OVERRIDE	OVERRIDE
Number of optional ACIS chips dropped	0	0
On-chip summing requested	N	N
Subarray requested	NONE	NONE
Alternating exposures requested	N	N
[s] Primary exposure time	3.2	3.2

2.3 Star Slots

2.4 FID Slots

A Summary

A.1 Status

V&V Scientist	Jen Lauer
V&V Date (YYYY-MM-DD)	2012.02.21
V&V Edition	1
V&V Disposition and Status	OK
V&V Charge Time	8.2132953622341

A.2 Comments