

V&V Reference Report

L2 ASCDS Version : 8.4.3

Observation 54770 - L2 Version 1
Chandra X-Ray Center

L2 Processing Date : Mar 21 2012

Contents

1	Front	2
2	OBI	3
2.1	OBI	3
2.1.1	Images	3
2.1.2	Bias	3
2.1.3	Parameters	4
2.1.4	Events	4
2.2	Compared Parameters	5
2.3	Star Slots	6
2.4	FID Slots	6
A	Summary	7
A.1	Status	7
A.2	Comments	7

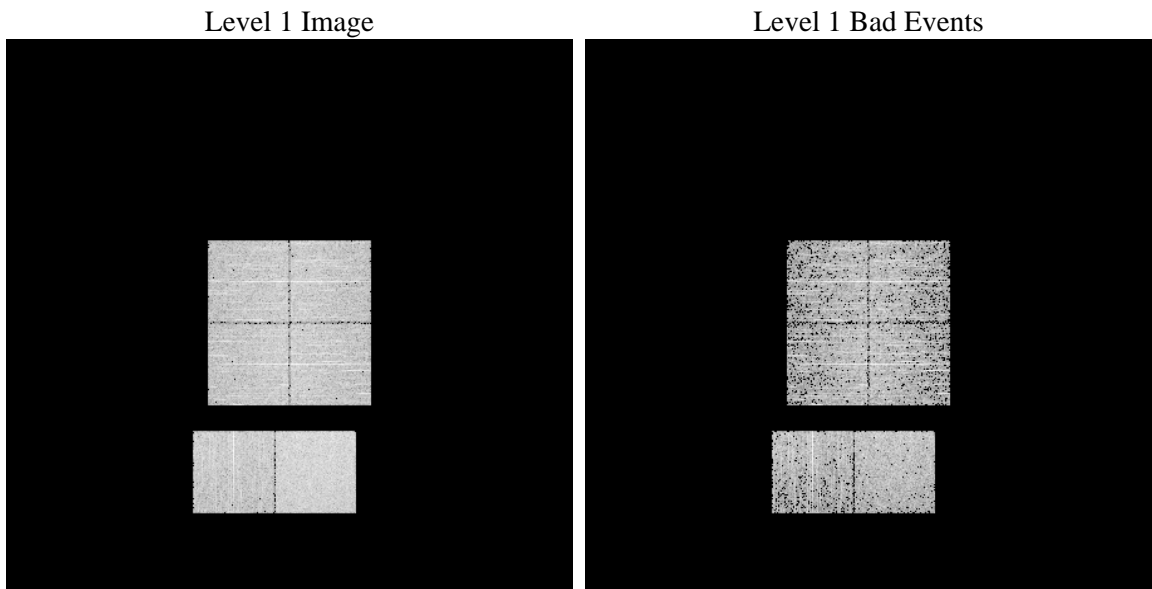
1 Front

seq_num	 	Sequence number
obs_id	54770	Observation id
title	ACIS-012367 diagnostics	Proposal title
observer	CHANDRA engineering request/realtime commanding	Principal investig
object	 	Source name
dtcycle	0	
cycle	P	events from which exps? Prim/Second/Both
ra_targ	0.0	Observer's specified target RA [deg]
dec_targ	0.0	Observer's specified target Dec [deg]
ra_nom	289.96324268752	Nominal RA [deg]
dec_nom	-53.981105386405	Nominal Dec [deg]
roll_nom	105.85417225233	Nominal Roll [deg]
revision	1	Processing version of data
ontime	3292.799987793	Sum of GTIs [s]
livetime	3251.1045716614	Livetime [s]
ontime0	3292.799987793	Sum of GTIs [s]
ontime1	3292.799987793	Sum of GTIs [s]
ontime2	3292.799987793	Sum of GTIs [s]
ontime3	3292.799987793	Sum of GTIs [s]
ontime6	3292.799987793	Sum of GTIs [s]
ontime7	3292.799987793	Sum of GTIs [s]
l2events	103716	Number of level 2 events

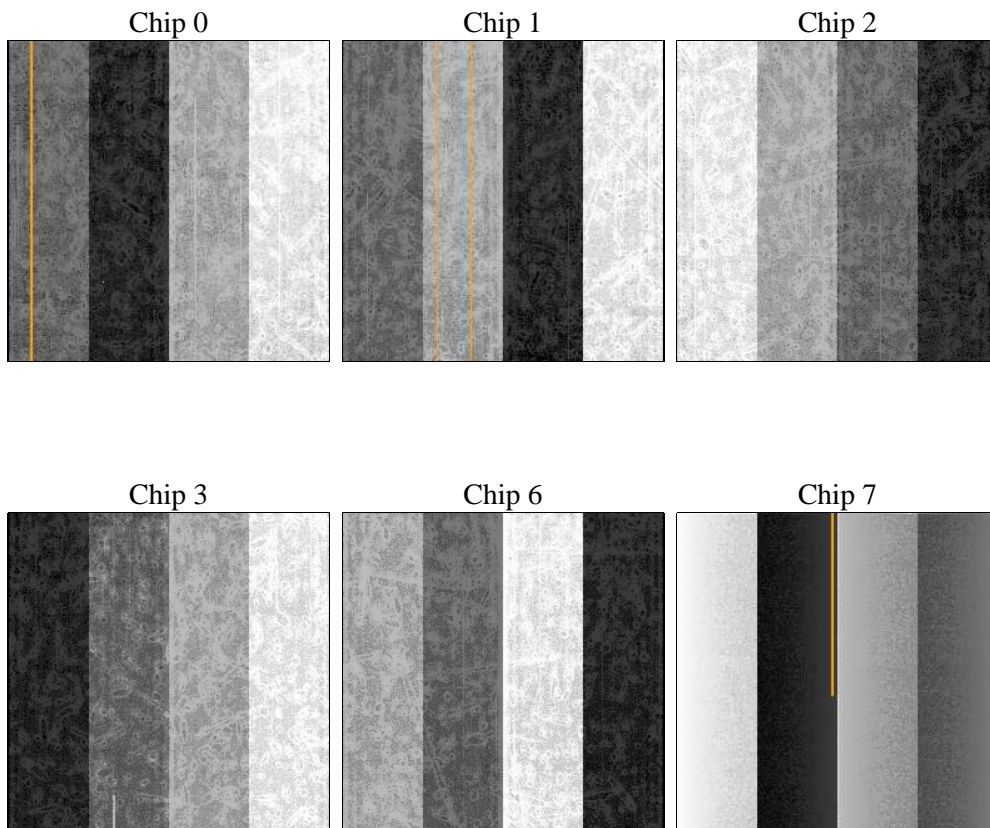
2 OBI

2.1 OBI

2.1.1 Images



2.1.2 Bias



2.1.3 Parameters

obi_num	0	Obi number	sched_exp_time	0.0	[s] Scheduled observation exposure time
ascdsver	8.4.3	Processing system revision	ontime	3292.799987793	Sum of GTIs [s]
caldsver	4.4.8	 	ontime0	3292.799987793	Sum of GTIs [s]
date	2012-03-22T02:42:18	Date and time of file creation	ontime1	3292.799987793	Sum of GTIs [s]
revision	1	Processing version of data	ontime2	3292.799987793	Sum of GTIs [s]
			ontime3	3292.799987793	Sum of GTIs [s]
			ontime6	3292.799987793	Sum of GTIs [s]
			ontime7	3292.799987793	Sum of GTIs [s]
			l1events	221713	Number of level 1 events

2.1.4 Events

	ccd 0	ccd 1	ccd 2	ccd 3	ccd 6	ccd 7		ccd 0	ccd 1	ccd 2	ccd 3	ccd 6	ccd 7
level 1 events	33717	34472	34588	35542	36076	47318	grade 0 events	8680	8438	8651	8917	8665	4589
rejected events	17272	18024	18242	19033	18899	20484		25%	24%	25%	25%	24%	9%
rejected %	51%	52%	52%	53%	52%	43%	grade 1 events	36	35	50	67	46	38
								0%	0%	0%	0%	0%	0%
							grade 2 events	3047	3270	2904	2997	3187	5808
								9%	9%	8%	8%	8%	12%
							grade 3 events	1103	1043	1129	1113	1245	2423
								3%	3%	3%	3%	3%	5%
							grade 4 events	1076	1064	1175	1068	1166	2356
								3%	3%	3%	3%	3%	4%
							grade 5 events	1163	1206	1177	1320	1228	3171
								3%	3%	3%	3%	3%	6%
							grade 6 events	2554	2650	2498	2428	2931	11688
								7%	7%	7%	6%	8%	24%
							grade 7 events	16058	16766	17004	17632	17608	17245
								47%	48%	49%	49%	48%	36%

2.2 Compared Parameters

Parameter	Planned	Actual	Parameter	Planned	Actual
Instrument	ACIS	ACIS	Obspar format version number	7	7
Detector	ACIS-012367	ACIS-012367	Obspar file type	PREDICTED	ACTUAL
Grating	NONE	NONE	Obspar update status	NONE	UPDATED
Data mode	FAINT	FAINT	Number of optional ACIS chips dropped	0	0
Observation mode	SECONDARY	SECONDARY	On-chip summing requested	N	N
[deg] Pointing RA	0	289.9632426875154	Subarray requested	NONE	NONE
[deg] Pointing Dec	0	-53.98110538640547	Alternating exposures requested	N	N
[deg] Pointing Roll	0.0	105.85417225233	[s] Primary exposure time	3.2	3.2
[mm] SIM focus pos	-1.429586	-1.428180813131781			
[mm] SIM defocus	0.1037507710433287	0.1051558262725154			
[mm] SIM translation stage pos	250.455976	250.466033080201			
[mm] SIM translation stage offset	0	-0.01005468664627074			
[s] Observation start time (MET)	448715961.188826	448715960.16383			
Observation start date	2012-03-21T11:19:21	2012-03-21T11:19:20			
[s] Observation end time (MET)	448724319.039269	448724318.01427			
Observation end date	2012-03-21T13:38:39	2012-03-21T13:38:38			
Read mode	TIMED	TIMED			

2.3 Star Slots

2.4 FID Slots

A Summary

A.1 Status

V&V Scientist	Joy Nichols
V&V Date (YYYY-MM-DD)	2012.03.22
V&V Edition	1
V&V Disposition and Status	OK
V&V Charge Time	3.292799987793

A.2 Comments