

V&V Reference Report

L2 ASCDS Version : 8.4.4

Observation 54628 - L2 Version 1
Chandra X-Ray Center

L2 Processing Date : May 8 2012

Contents

1	Front	2
2	OBI	3
2.1	OBI	3
2.1.1	Images	3
2.1.2	Bias	3
2.1.3	Parameters	4
2.1.4	Events	4
2.2	Compared Parameters	5
2.3	Star Slots	6
2.4	FID Slots	6
A	Summary	7
A.1	Status	7
A.2	Comments	7

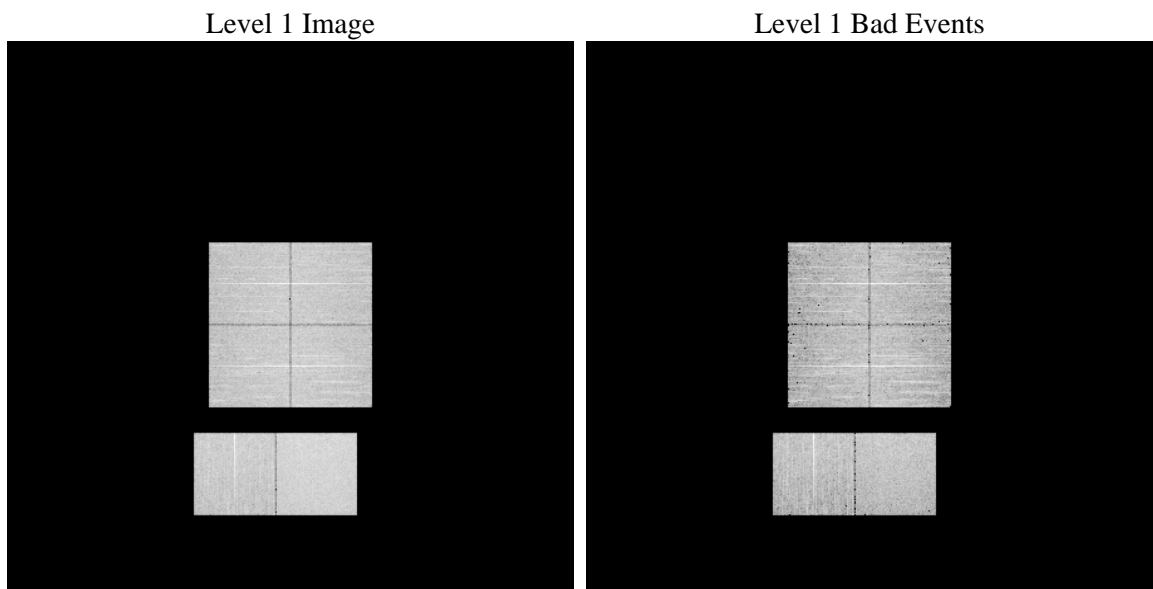
1 Front

seq_num	 	Sequence number
obs_id	54628	Observation id
title	ACIS-012367 diagnostics	Proposal title
observer	CHANDRA engineering request/realtime commanding	Principal investig
object	 	Source name
dtcycle	0	
cycle	P	events from which exps? Prim/Second/Both
ra_targ	0.0	Observer's specified target RA [deg]
dec_targ	0.0	Observer's specified target Dec [deg]
ra_nom	349.98088606365	Nominal RA [deg]
dec_nom	20.025309292418	Nominal Dec [deg]
roll_nom	96.788028342643	Nominal Roll [deg]
revision	1	Processing version of data
ontime	8283.9167883396	Sum of GTIs [s]
livetime	8179.0208459898	Livetime [s]
ontime0	8283.8757483363	Sum of GTIs [s]
ontime1	8283.834708333	Sum of GTIs [s]
ontime2	8283.7936683297	Sum of GTIs [s]
ontime3	8283.9578283429	Sum of GTIs [s]
ontime6	8283.7526283264	Sum of GTIs [s]
ontime7	8283.9167883396	Sum of GTIs [s]
l2events	256012	Number of level 2 events

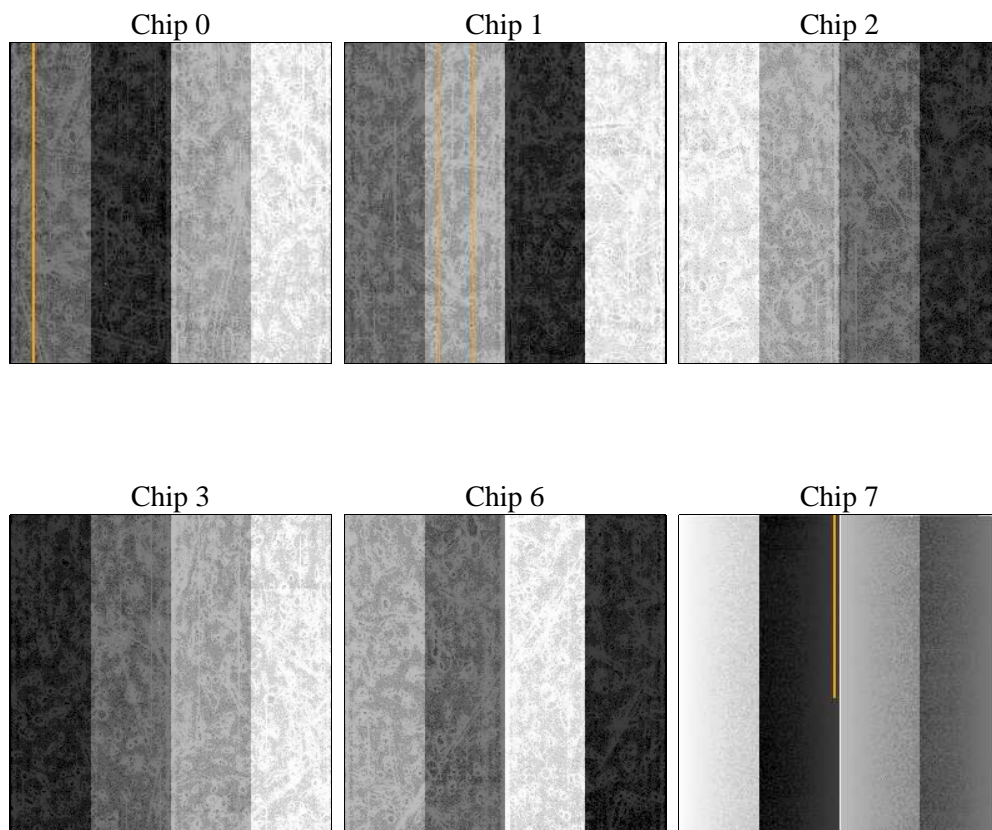
2 OBI

2.1 OBI

2.1.1 Images



2.1.2 Bias



2.1.3 Parameters

obi_num	0	Obi number	sched_exp_time	0.0	[s] Scheduled observation exposure time
ascdsver	8.4.4	Processing system revision	ontime	8283.9167883396	Sum of GTIs [s]
caldsver	4.4.9	 	ontime0	8283.8757483363	Sum of GTIs [s]
date	2012-05-08T22:28:14	Date and time of file creation	ontime1	8283.834708333	Sum of GTIs [s]
revision	1	Processing version of data	ontime2	8283.7936683297	Sum of GTIs [s]
			ontime3	8283.9578283429	Sum of GTIs [s]
			ontime6	8283.7526283264	Sum of GTIs [s]
			ontime7	8283.9167883396	Sum of GTIs [s]
			l1events	598548	Number of level 1 events

2.1.4 Events

	ccd 0	ccd 1	ccd 2	ccd 3	ccd 6	ccd 7		ccd 0	ccd 1	ccd 2	ccd 3	ccd 6	ccd 7
level 1 events	90734	92446	92481	97167	98561	127159	grade 0 events	20586	19337	21353	21590	19725	10330
rejected events	50381	52365	52537	56889	56784	58583		22%	20%	23%	22%	20%	8%
rejected %	55%	56%	56%	58%	57%	46%	grade 1 events	122	111	138	122	104	101
								0%	0%	0%	0%	0%	0%
							grade 2 events	7922	8837	6978	7123	9371	15279
								8%	9%	7%	7%	9%	12%
							grade 3 events	2798	2489	2843	2801	2528	5567
								3%	2%	3%	2%	2%	4%
							grade 4 events	2722	2527	2748	2798	2533	5614
								2%	2%	2%	2%	2%	4%
							grade 5 events	3161	3094	2898	3428	3136	8366
								3%	3%	3%	3%	3%	6%
							grade 6 events	6325	6891	6022	5966	7620	31786
								6%	7%	6%	6%	7%	24%
							grade 7 events	47098	49160	49501	53339	53544	50116
								51%	53%	53%	54%	54%	39%

2.2 Compared Parameters

Parameter	Planned	Actual	Parameter	Planned	Actual
Instrument	ACIS	ACIS	Obspar format version number	7	7
Detector	ACIS-012367	ACIS-012367	Obspar file type	PREDICTED	ACTUAL
Grating	NONE	NONE	Obspar update status	NONE	UPDATED
Data mode	FAINT	FAINT	Number of optional ACIS chips dropped	0	0
Observation mode	SECONDARY	SECONDARY	On-chip summing requested	N	N
[deg] Pointing RA	0	349.9808860636489	Subarray requested	NONE	NONE
[deg] Pointing Dec	0	20.02530929241811	Alternating exposures requested	N	N
[deg] Pointing Roll	0.0	96.78802834264266	[s] Primary exposure time	3.2	3.2
[mm] SIM focus pos	-1.429586	-1.428180813131781			
[mm] SIM defocus	0.1037507710433287	0.1051558262725154			
[mm] SIM translation stage pos	250.455976	250.466033080201			
[mm] SIM translation stage offset	0	-0.01005468664627074			
[s] Observation start time (MET)	452853355.458284	452853354.43328			
Observation start date	2012-05-08T08:35:55	2012-05-08T08:35:54			
[s] Observation end time (MET)	452864933.858899	452864932.8339			
Observation end date	2012-05-08T11:48:54	2012-05-08T11:48:52			
Read mode	TIMED	TIMED			

2.3 Star Slots

2.4 FID Slots

A Summary

A.1 Status

V&V Scientist	Joy Nichols
V&V Date (YYYY-MM-DD)	2012.05.09
V&V Edition	1
V&V Disposition and Status	OK
V&V Charge Time	8.2839167883396

A.2 Comments