

# V&V Reference Report

## L2 ASCDS Version : 8.4.4

Observation 54609 - L2 Version 1  
Chandra X-Ray Center

L2 Processing Date : May 19 2012

## Contents

<b>1</b>	<b>Front</b>	<b>2</b>
<b>2</b>	<b>OBI</b>	<b>3</b>
2.1	OBI . . . . .	3
2.1.1	Images . . . . .	3
2.1.2	Bias . . . . .	3
2.1.3	Parameters . . . . .	4
2.1.4	Events . . . . .	4
2.2	Compared Parameters . . . . .	5
2.3	Star Slots . . . . .	6
2.4	FID Slots . . . . .	6
<b>A</b>	<b>Summary</b>	<b>7</b>
A.1	Status . . . . .	7
A.2	Comments . . . . .	7

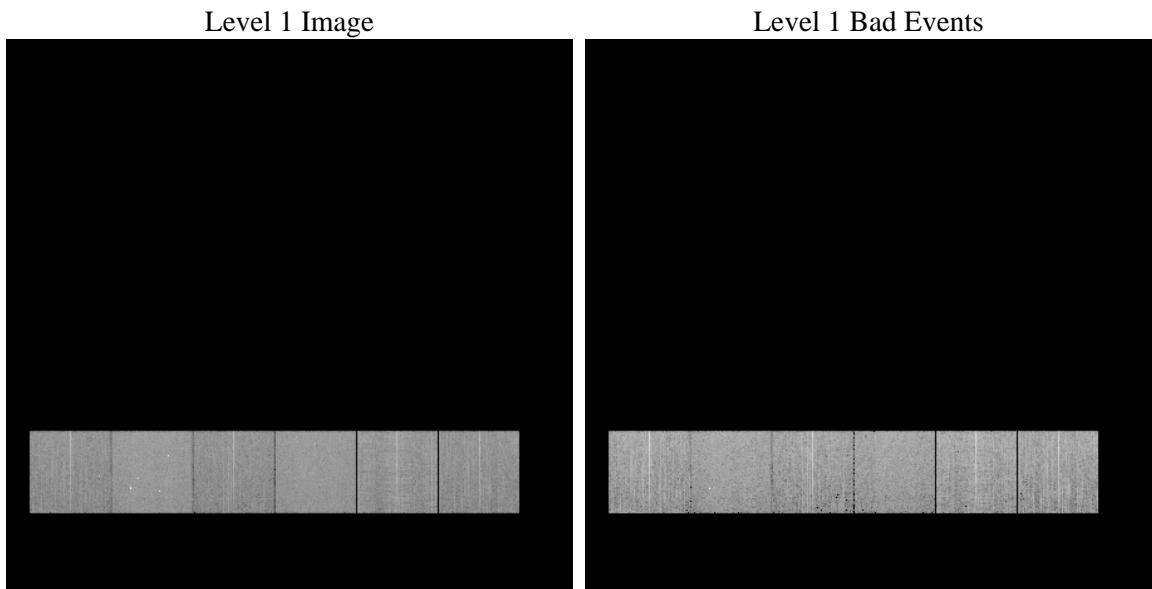
# 1 Front

seq_num	&#160	Sequence number
obs_id	54609	Observation id
title	ACIS-456789 diagnostics	Proposal title
observer	CHANDRA engineering request/realtime commanding	Principal investig
object	&#160	Source name
dtcycle	0	&#160
cycle	P	events from which exps? Prim/Second/Both
ra_targ	0.0	Observer's specified target RA [deg]
dec_targ	0.0	Observer's specified target Dec [deg]
ra_nom	150.13623508365	Nominal RA [deg]
dec_nom	-83.023476950033	Nominal Dec [deg]
roll_nom	272.09923306889	Nominal Roll [deg]
revision	1	Processing version of data
ontime	8278.3999692202	Sum of GTIs [s]
livetime	8173.5738841559	Livetime [s]
ontime4	8278.3999692202	Sum of GTIs [s]
ontime5	8278.3999692202	Sum of GTIs [s]
ontime6	8278.3999692202	Sum of GTIs [s]
ontime7	8278.3999692202	Sum of GTIs [s]
ontime8	8275.1589288116	Sum of GTIs [s]
ontime9	8278.3999692202	Sum of GTIs [s]
l2events	291508	Number of level 2 events

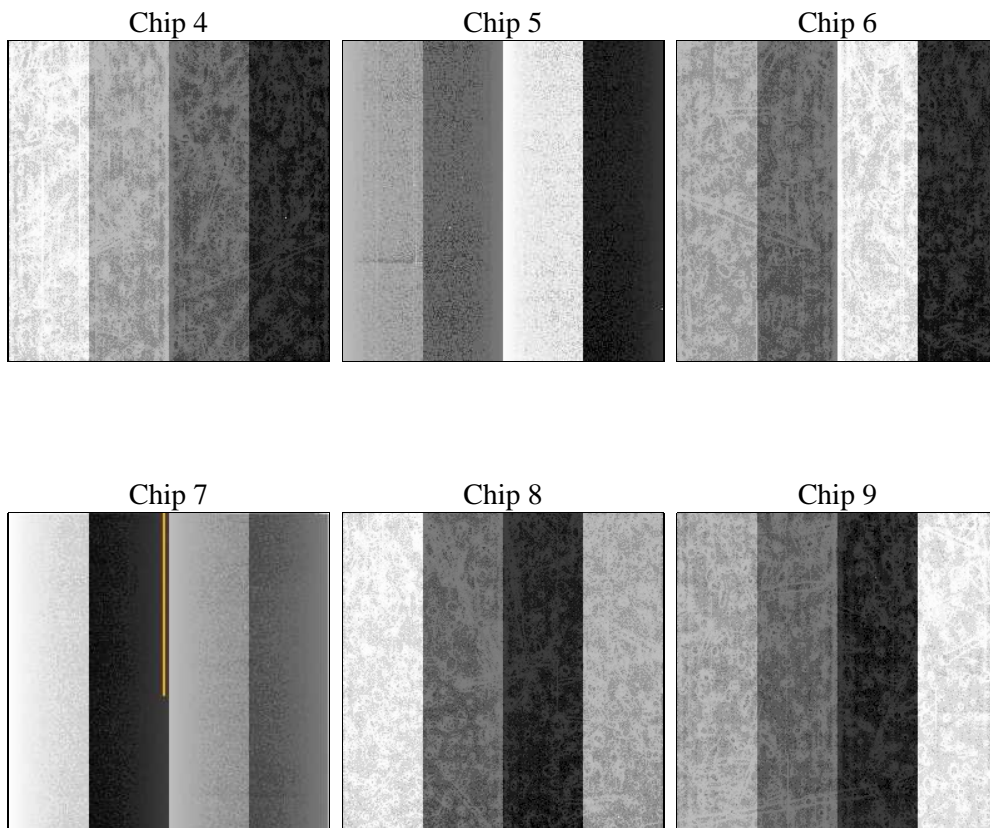
## 2 OBI

### 2.1 OBI

#### 2.1.1 Images



#### 2.1.2 Bias



### 2.1.3 Parameters

obi_num	1	Obi number	sched_exp_time	0.0	[s] Scheduled observation exposure time
ascdsver	8.4.4	Processing system revision	ontime	8278.3999692202	Sum of GTIs [s]
caldsver	4.4.9	&#160	ontime4	8278.3999692202	Sum of GTIs [s]
date	2012-05-19T17:48:52	Date and time of file creation	ontime5	8278.3999692202	Sum of GTIs [s]
revision	1	Processing version of data	ontime6	8278.3999692202	Sum of GTIs [s]
			ontime7	8278.3999692202	Sum of GTIs [s]
			ontime8	8275.1589288116	Sum of GTIs [s]
			ontime9	8278.3999692202	Sum of GTIs [s]
			l1events	683177	Number of level 1 events

### 2.1.4 Events

	ccd 4	ccd 5	ccd 6	ccd 7	ccd 8	ccd 9		ccd 4	ccd 5	ccd 6	ccd 7	ccd 8	ccd 9
level 1 events	101802	133518	99401	125864	120089	102503	grade 0 events	22226	10000	21755	11255	25219	21201
rejected events	61879	58741	56970	56138	65640	61637		21%	7%	21%	8%	21%	20%
rejected %	60%	43%	57%	44%	54%	60%	grade 1 events	196	544	112	112	132	137
								0%	0%	0%	0%	0%	0%
							grade 2 events	6691	26138	7915	15132	10527	7404
								6%	19%	7%	12%	8%	7%
							grade 3 events	2840	2888	2839	6155	4319	2784
								2%	2%	2%	4%	3%	2%
							grade 4 events	2855	2831	2773	6137	4184	2792
								2%	2%	2%	4%	3%	2%
							grade 5 events	3479	7294	3583	8837	4607	4029
								3%	5%	3%	7%	3%	3%
							grade 6 events	5335	32951	7165	31063	10218	6706
								5%	24%	7%	24%	8%	6%
							grade 7 events	58180	50872	53259	47173	60883	57450
								57%	38%	53%	37%	50%	56%

## 2.2 Compared Parameters

Parameter	Planned	Actual	Parameter	Planned	Actual
Instrument	ACIS	ACIS	Obspar format version number	7	7
Detector	ACIS-456789	ACIS-456789	Obspar file type	PREDICTED	ACTUAL
Grating	NONE	NONE	Obspar update status	NONE	UPDATED
Data mode	FAINT	FAINT	Number of optional ACIS chips dropped	0	0
Observation mode	SECONDARY	SECONDARY	On-chip summing requested	N	N
[deg] Pointing RA	0	150.1362350836505	Subarray requested	NONE	NONE
[deg] Pointing Dec	0	-83.02347695003279	Alternating exposures requested	N	N
[deg] Pointing Roll	0.0	272.0992330688906	[s] Primary exposure time	3.2	3.2
[mm] SIM focus pos	-1.429586	-1.428180813131781			
[mm] SIM defocus	0.1037507710433287	0.1051558262725154			
[mm] SIM translation stage pos	250.455976	250.466033080201			
[mm] SIM translation stage offset	0	-0.01005468664627074			
[s] Observation start time (MET)	453737418.005317	453737416.98032			
Observation start date	2012-05-18T14:10:18	2012-05-18T14:10:16			
[s] Observation end time (MET)	453756872.506351	453756871.48135			
Observation end date	2012-05-18T19:34:33	2012-05-18T19:34:31			
Read mode	TIMED	TIMED			

## **2.3 Star Slots**

## **2.4 FID Slots**

## A Summary

### A.1 Status

V&V Scientist	Joy Nichols
V&V Date (YYYY-MM-DD)	2012.05.21
V&V Edition	1
V&V Disposition and Status	OK
V&V Charge Time	8.2783999692202

### A.2 Comments