

V&V Reference Report

L2 ASCDS Version : 8.4.5

Observation 54316 - L2 Version 1
Chandra X-Ray Center

L2 Processing Date : Sep 20 2012

Contents

1	Front	2
2	OBI	3
2.1	OBI	3
2.1.1	Images	3
2.1.2	Bias	3
2.1.3	Parameters	4
2.1.4	Events	4
2.2	Compared Parameters	5
2.3	Star Slots	6
2.4	FID Slots	6
A	Summary	7
A.1	Status	7
A.2	Comments	7

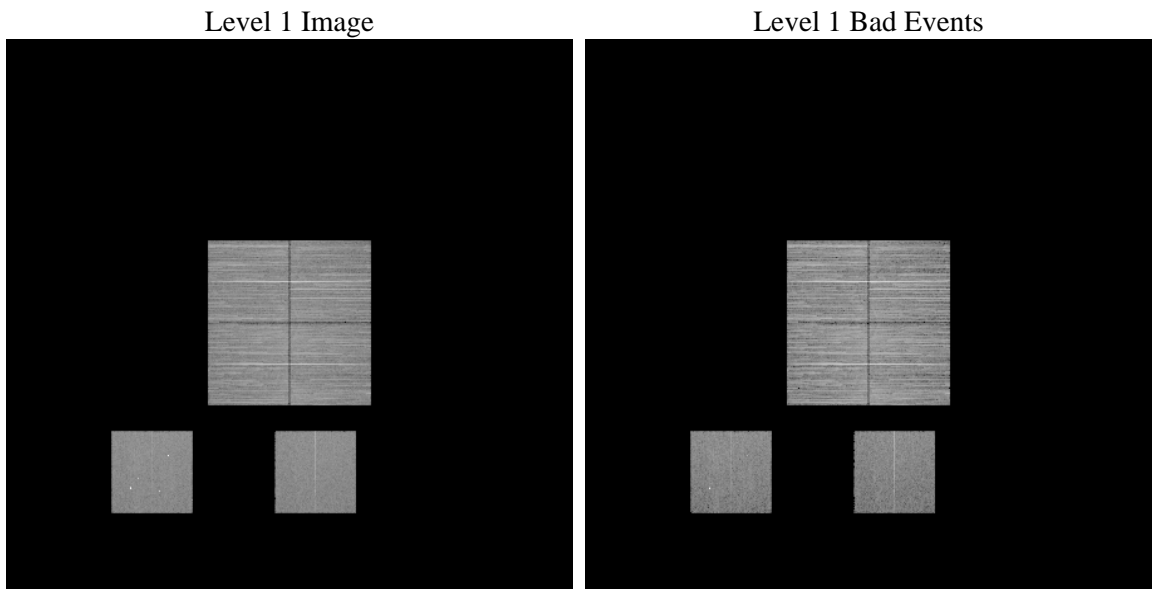
1 Front

seq_num	 	Sequence number
obs_id	54316	Observation id
title	ACIS-012357 diagnostics	Proposal title
observer	CHANDRA engineering request/realtime commanding	Principal investig
object	 	Source name
dtcycle	0	
cycle	P	events from which exps? Prim/Second/Both
ra_targ	0.0	Observer's specified target RA [deg]
dec_targ	0.0	Observer's specified target Dec [deg]
ra_nom	330.33125255288	Nominal RA [deg]
dec_nom	-8.2754493657465	Nominal Dec [deg]
roll_nom	283.19888260614	Nominal Roll [deg]
revision	1	Processing version of data
ontime	8035.1999701262	Sum of GTIs [s]
livetime	7933.4534298879	Livetime [s]
ontime0	8035.1999701262	Sum of GTIs [s]
ontime1	8035.1999701262	Sum of GTIs [s]
ontime2	8035.1999701262	Sum of GTIs [s]
ontime3	8035.1999701262	Sum of GTIs [s]
ontime5	8035.1999701262	Sum of GTIs [s]
ontime7	8035.1999701262	Sum of GTIs [s]
l2events	320969	Number of level 2 events

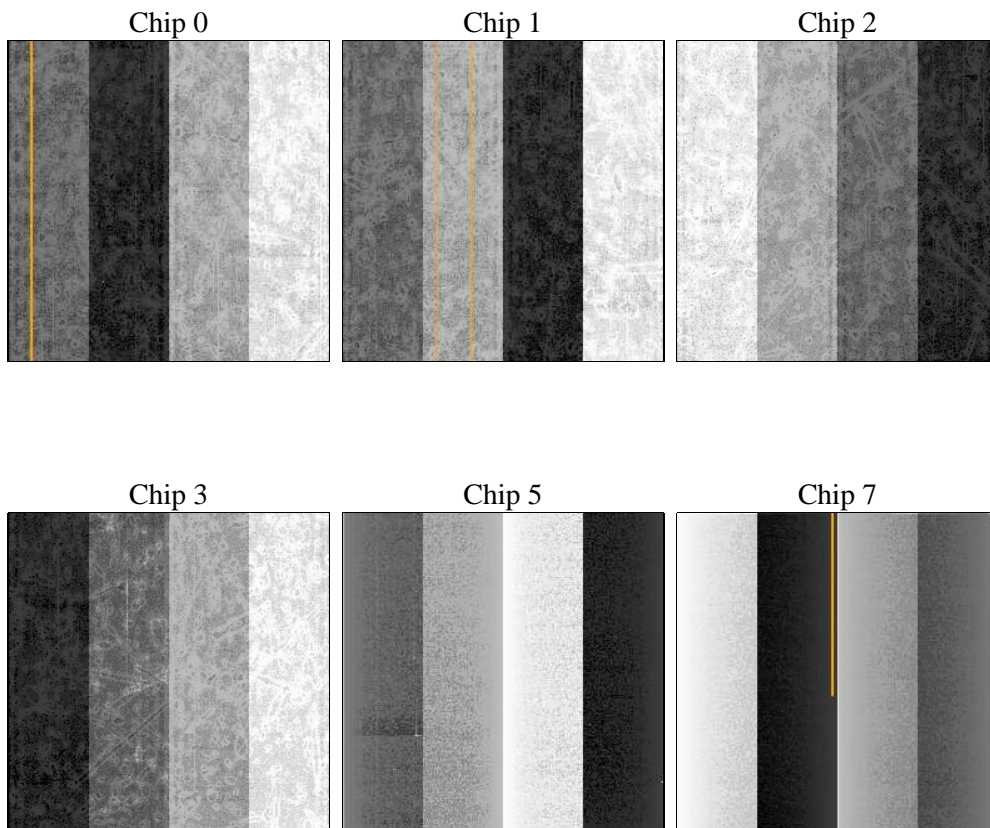
2 OBI

2.1 OBI

2.1.1 Images



2.1.2 Bias



2.1.3 Parameters

obi_num	0	Obi number	sched_exp_time	0.0	[s] Scheduled observation exposure time
ascdsver	8.4.5	Processing system revision	ontime	8035.1999701262	Sum of GTIs [s]
caldsver	4.5.1.1	 	ontime0	8035.1999701262	Sum of GTIs [s]
date	2012-09-20T14:44:27	Date and time of file creation	ontime1	8035.1999701262	Sum of GTIs [s]
revision	1	Processing version of data	ontime2	8035.1999701262	Sum of GTIs [s]
			ontime3	8035.1999701262	Sum of GTIs [s]
			ontime5	8035.1999701262	Sum of GTIs [s]
			ontime7	8035.1999701262	Sum of GTIs [s]
			l1events	1046169	Number of level 1 events

2.1.4 Events

	ccd 0	ccd 1	ccd 2	ccd 3	ccd 5	ccd 7		ccd 0	ccd 1	ccd 2	ccd 3	ccd 5	ccd 7
level 1 events	187420	178747	186998	183028	159942	150034	grade 0 events	26184	24925	26718	27117	11842	13598
rejected events	139888	131384	139724	135277	82798	76602		13%	13%	14%	14%	7%	9%
rejected %	74%	73%	74%	73%	51%	51%	grade 1 events	138	125	170	149	148	105
								0%	0%	0%	0%	0%	0%
							grade 2 events	10398	11083	9747	9730	30894	19159
								5%	6%	5%	5%	19%	12%
							grade 3 events	3264	3222	3359	3369	3020	6480
								1%	1%	1%	1%	1%	4%
							grade 4 events	3278	3263	3331	3381	3038	6430
								1%	1%	1%	1%	1%	4%
							grade 5 events	3030	3211	3044	3355	6839	8193
								1%	1%	1%	1%	4%	5%
							grade 6 events	8977	9557	8537	8674	32978	32578
								4%	5%	4%	4%	20%	21%
							grade 7 events	132151	123361	132092	127253	71183	63491
								70%	69%	70%	69%	44%	42%

2.2 Compared Parameters

Parameter	Planned	Actual
Instrument	ACIS	ACIS
Detector	ACIS-012357	ACIS-012357
Grating	NONE	NONE
Data mode	FAINT	FAINT
Observation mode	SECONDARY	SECONDARY
[deg] Pointing RA	0	330.331252552882
[deg] Pointing Dec	0	-8.275449365746507
[deg] Pointing Roll	0.0	283.1988826061432
SIM focus pos (mm)	-1.4281808131	-1.4281808131
[mm] SIM defocus	0.1051557500557434	0.1051557500557434
SIM translation stage pos (mm)	250.4660330802	250.4660330802
[mm] SIM translation stage offset	-0.01005726120527584	-0.01005726120527584
[s] Observation start time (MET)	464478164.999998	464478164.999998
Observation start date	2012-09-19T21:42:45	2012-09-19T21:42:44
[s] Observation end time (MET)	464486655.215424	464486655.215424
Observation end date	2012-09-20T00:04:15	2012-09-20T00:04:15
Read mode	TIMED	TIMED

Parameter	Planned	Actual
Obspar format version number	7	7
Obspar file type	PREDICTED	ACTUAL
Obspar update status	OVERRIDE	OVERRIDE
Number of optional ACIS chips dropped	0	0
On-chip summing requested	N	N
Subarray requested	NONE	NONE
Alternating exposures requested	N	N
[s] Primary exposure time	3.2	3.2

2.3 Star Slots

2.4 FID Slots

A Summary

A.1 Status

V&V Scientist	Jen Lauer
V&V Date (YYYY-MM-DD)	2012.09.20
V&V Edition	1
V&V Disposition and Status	OK
V&V Charge Time	8.0351999701262

A.2 Comments