

V&V Reference Report

L2 ASCDS Version : 8.4.5

Observation 54153 - L2 Version 1
Chandra X-Ray Center

L2 Processing Date : Nov 20 2012

Contents

1	Front	2
2	OBI	3
2.1	OBI	3
2.1.1	Images	3
2.1.2	Bias	3
2.1.3	Parameters	4
2.1.4	Events	4
2.2	Compared Parameters	5
2.3	Star Slots	6
2.4	FID Slots	6
A	Summary	7
A.1	Status	7
A.2	Comments	7

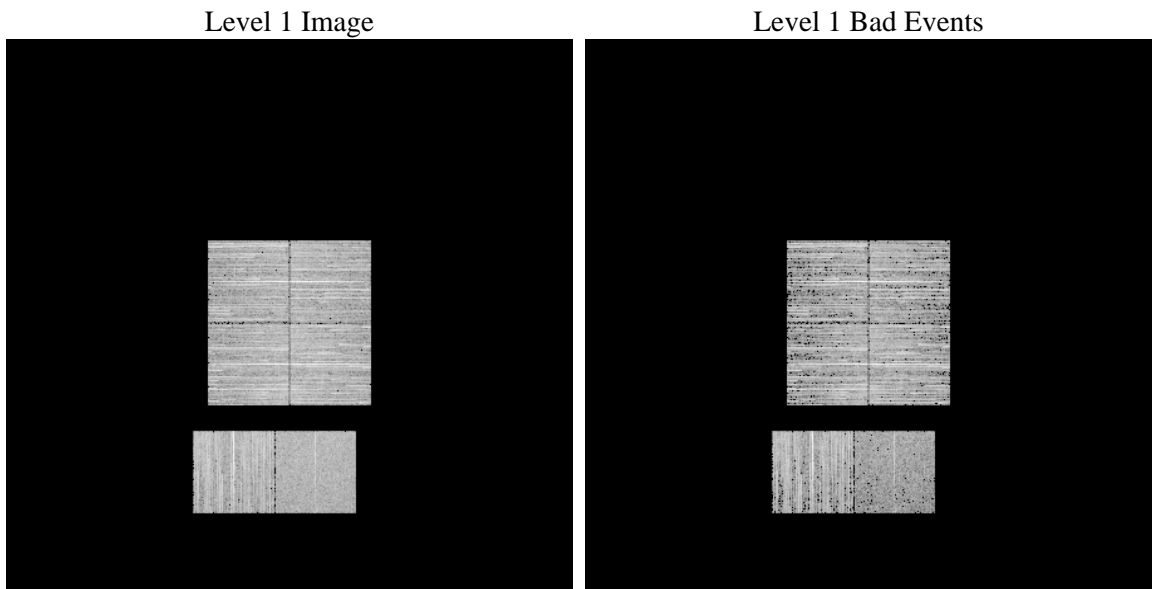
1 Front

seq_num	 	Sequence number
obs_id	54153	Observation id
title	ACIS-012367 diagnostics	Proposal title
observer	CHANDRA engineering request/realtime commanding	Principal investig
object	 	Source name
dtcycle	0	
cycle	P	events from which exps? Prim/Second/Both
ra_targ	0.0	Observer's specified target RA [deg]
dec_targ	0.0	Observer's specified target Dec [deg]
ra_nom	41.328789831624	Nominal RA [deg]
dec_nom	-0.00080353008060679	Nominal Dec [deg]
roll_nom	325.73789976422	Nominal Roll [deg]
revision	1	Processing version of data
ontime	3247.9999879599	Sum of GTIs [s]
livetime	3206.8718564015	Livetime [s]
ontime0	3247.9999879599	Sum of GTIs [s]
ontime1	3247.9999879599	Sum of GTIs [s]
ontime2	3247.9999879599	Sum of GTIs [s]
ontime3	3247.9999879599	Sum of GTIs [s]
ontime6	3247.9999879599	Sum of GTIs [s]
ontime7	3247.9999879599	Sum of GTIs [s]
l2events	92706	Number of level 2 events

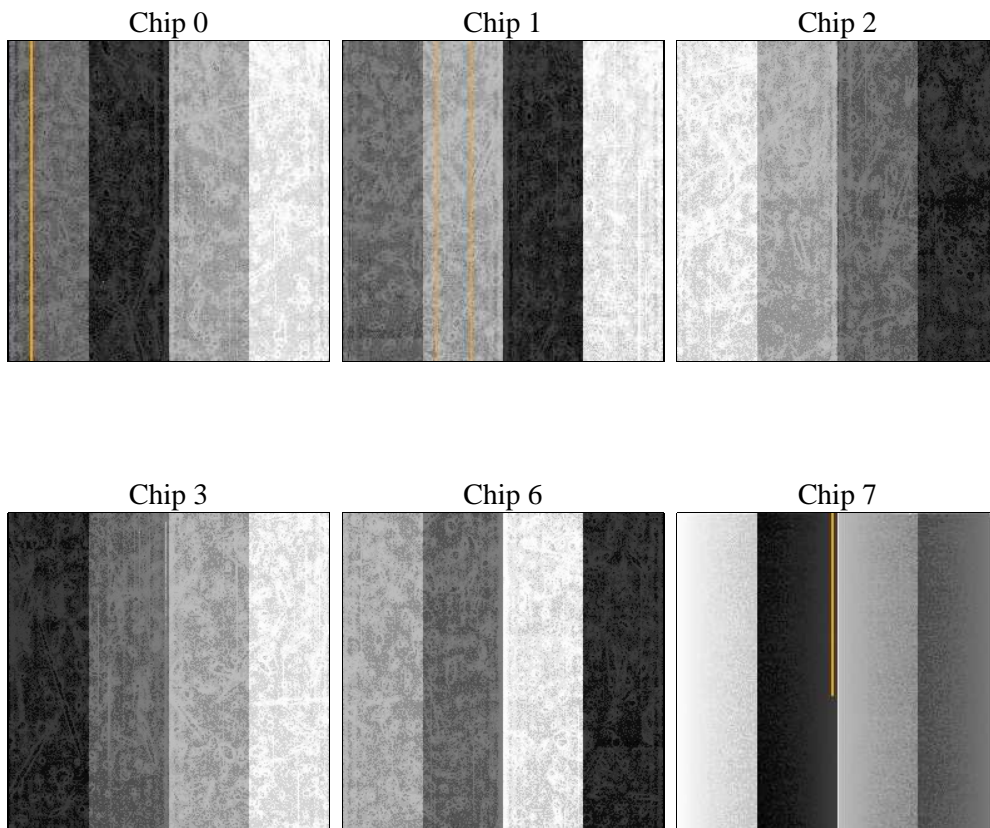
2 OBI

2.1 OBI

2.1.1 Images



2.1.2 Bias



2.1.3 Parameters

obi_num	0	Obi number	sched_exp_time	0.0	[s] Scheduled observation exposure time
ascdsver	8.4.5	Processing system revision	ontime	3247.9999879599	Sum of GTIs [s]
caldbver	4.5.2	 	ontime0	3247.9999879599	Sum of GTIs [s]
date	2012-11-20T16:10:20	Date and time of file creation	ontime1	3247.9999879599	Sum of GTIs [s]
revision	1	Processing version of data	ontime2	3247.9999879599	Sum of GTIs [s]
			ontime3	3247.9999879599	Sum of GTIs [s]
			ontime6	3247.9999879599	Sum of GTIs [s]
			ontime7	3247.9999879599	Sum of GTIs [s]
			l1events	372953	Number of level 1 events

2.1.4 Events

	ccd 0	ccd 1	ccd 2	ccd 3	ccd 6	ccd 7		ccd 0	ccd 1	ccd 2	ccd 3	ccd 6	ccd 7
level 1 events	61017	60966	64146	67245	66559	53020	grade 0 events	7360	7210	7598	7668	7557	4090
rejected events	46734	46502	49720	52778	51666	27317		12%	11%	11%	11%	11%	7%
rejected %	76%	76%	77%	78%	77%	51%	grade 1 events	44	31	29	46	35	40
								0%	0%	0%	0%	0%	0%
							grade 2 events	2900	3003	2822	2744	3007	6261
								4%	4%	4%	4%	4%	11%
							grade 3 events	945	1020	1017	1014	956	2180
								1%	1%	1%	1%	1%	4%
							grade 4 events	968	1009	1001	1079	1010	2316
								1%	1%	1%	1%	1%	4%
							grade 5 events	1145	1191	1098	1339	1245	3226
								1%	1%	1%	1%	1%	6%
							grade 6 events	2305	2403	2169	2181	2588	11202
								3%	3%	3%	3%	3%	21%
							grade 7 events	45350	45099	48412	51174	50161	23705
								74%	73%	75%	76%	75%	44%

2.2 Compared Parameters

Parameter	Planned	Actual
Instrument	ACIS	ACIS
Detector	ACIS-012367	ACIS-012367
Grating	NONE	NONE
Data mode	FAINT	FAINT
Observation mode	SECONDARY	SECONDARY
[deg] Pointing RA	0	41.32878983162436
[deg] Pointing Dec	0	-0.0008035300806067925
[deg] Pointing Roll	0.0	325.7378997642174
SIM focus pos (mm)	-1.4281808131	-1.4281808131
[mm] SIM defocus	0.1051557500557434	0.1051557500557434
SIM translation stage pos (mm)	250.4660330802	250.4660330802
[mm] SIM translation stage offset	-0.01005726120527584	-0.01005726120527584
[s] Observation start time (MET)	469737567.382382	469737567.382382
Observation start date	2012-11-19T18:39:27	2012-11-19T18:39:27
[s] Observation end time (MET)	469742115.595476	469742115.595476
Observation end date	2012-11-19T19:55:16	2012-11-19T19:55:15
Read mode	TIMED	TIMED

Parameter	Planned	Actual
Obspar format version number	7	7
Obspar file type	PREDICTED	ACTUAL
Obspar update status	OVERRIDE	OVERRIDE
Number of optional ACIS chips dropped	0	0
On-chip summing requested	N	N
Subarray requested	NONE	NONE
Alternating exposures requested	N	N
[s] Primary exposure time	3.2	3.2

2.3 Star Slots

2.4 FID Slots

A Summary

A.1 Status

V&V Scientist	Jen Lauer
V&V Date (YYYY-MM-DD)	2012.11.20
V&V Edition	1
V&V Disposition and Status	OK
V&V Charge Time	3.2479999879599

A.2 Comments