

V&V Reference Report

L2 ASCDS Version : 8.4.3

Observation 62807 - L2 Version 2
Chandra X-Ray Center

L2 Processing Date : Feb 5 2012

Contents

1	Front	2
2	OBI	3
2.1	OBI	3
2.1.1	Images	3
2.1.2	Bias	3
2.1.3	Parameters	4
2.1.4	Events	4
2.2	Compared Parameters	5
2.3	Star Slots	6
2.4	FID Slots	6
A	Summary	7
A.1	Status	7
A.2	Comments	7

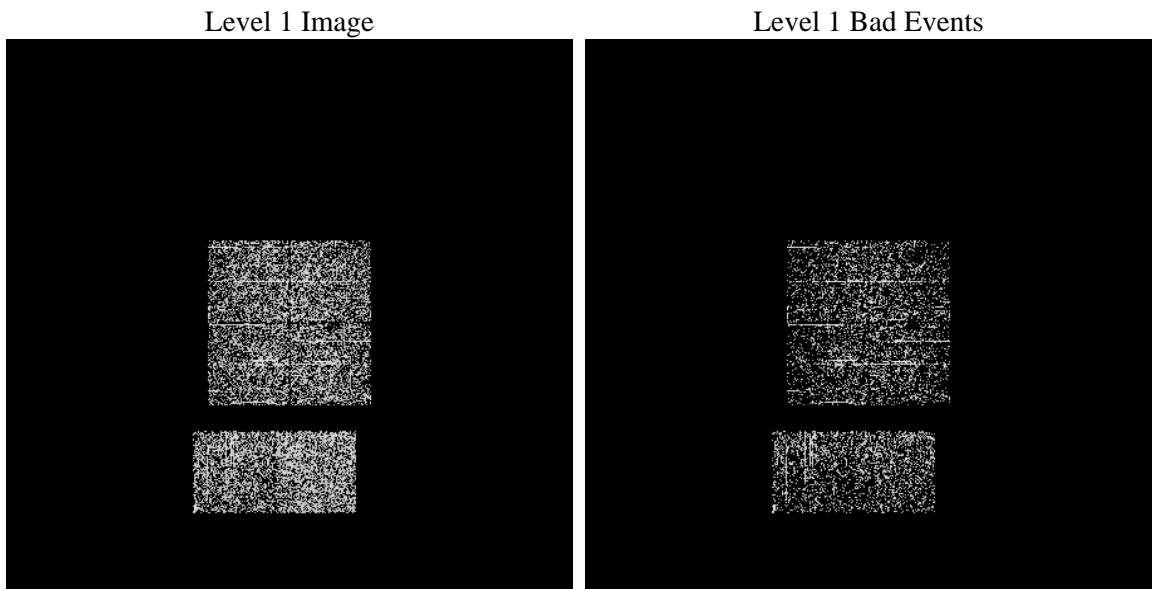
1 Front

seq_num	 	Sequence number
obs_id	62807	Observation id
title	ACIS-012367 diagnostics	Proposal title
observer	CHANDRA engineering request/realtime commanding	Principal investig
object	 	Source name
dtcycle	0	
cycle	P	events from which exps? Prim/Second/Both
ra_targ	0.0	Observer's specified target RA [deg]
dec_targ	0.0	Observer's specified target Dec [deg]
ra_nom	188.70250837736	Nominal RA [deg]
dec_nom	-10.971397369098	Nominal Dec [deg]
roll_nom	52.196839731162	Nominal Roll [deg]
revision	2	Processing version of data
ontime	239.99999916553	Sum of GTIs [s]
livetime	236.96097466545	Livetime [s]
ontime0	239.99999916553	Sum of GTIs [s]
ontime1	239.99999916553	Sum of GTIs [s]
ontime2	239.99999916553	Sum of GTIs [s]
ontime3	239.99999916553	Sum of GTIs [s]
ontime6	239.99999916553	Sum of GTIs [s]
ontime7	239.99999916553	Sum of GTIs [s]
l2events	9577	Number of level 2 events

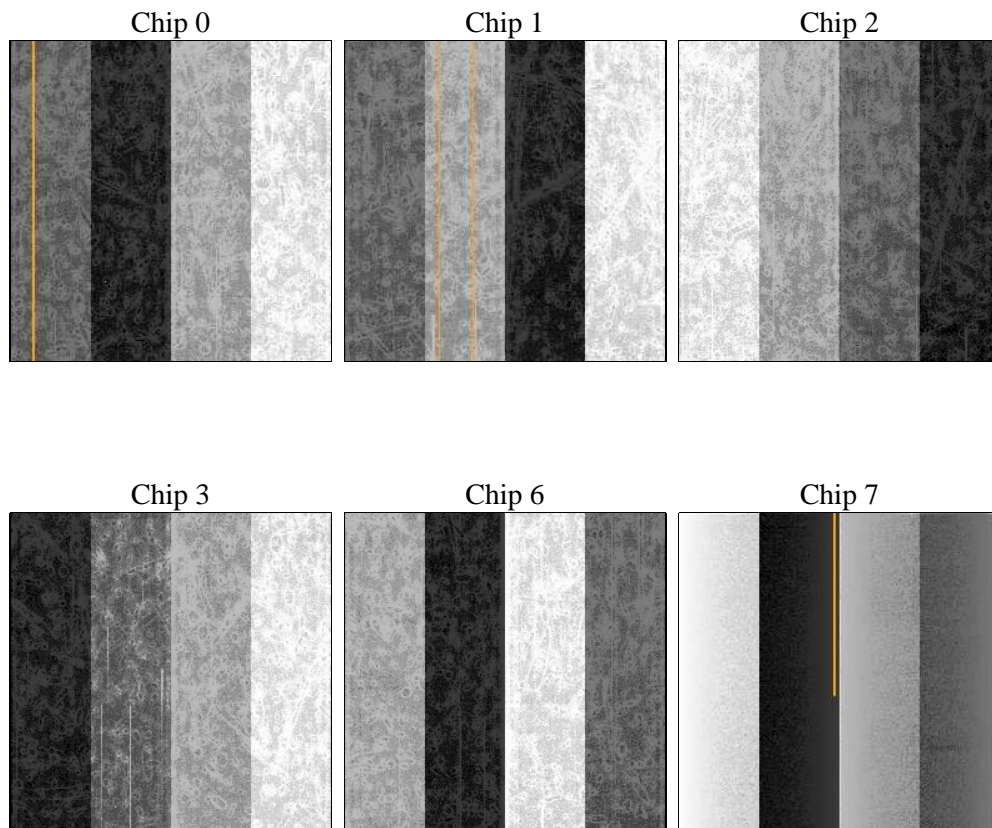
2 OBI

2.1 OBI

2.1.1 Images



2.1.2 Bias



2.1.3 Parameters

obi_num	0	Obi number	sched_exp_time	0.0	[s] Scheduled observation exposure time
ascdsver	8.4.3	Processing system revision	ontime	239.99999916553	Sum of GTIs [s]
caldsver	4.4.7	 	ontime0	239.99999916553	Sum of GTIs [s]
date	2012-02-05T17:35:16	Date and time of file creation	ontime1	239.99999916553	Sum of GTIs [s]
revision	2	Processing version of data	ontime2	239.99999916553	Sum of GTIs [s]
			ontime3	239.99999916553	Sum of GTIs [s]
			ontime6	239.99999916553	Sum of GTIs [s]
			ontime7	239.99999916553	Sum of GTIs [s]
			l1events	20751	Number of level 1 events

2.1.4 Events

	ccd 0	ccd 1	ccd 2	ccd 3	ccd 6	ccd 7
level 1 events	3151	3252	3141	3322	3552	4333
rejected events	1593	1709	1669	1807	1962	1874
rejected %	50%	52%	53%	54%	55%	43%

	ccd 0	ccd 1	ccd 2	ccd 3	ccd 6	ccd 7
grade 0 events	813	803	783	818	827	450
	25%	24%	24%	24%	23%	10%
grade 1 events	5	14	3	7	5	4
	0%	0%	0%	0%	0%	0%
grade 2 events	290	291	291	252	291	522
	9%	8%	9%	7%	8%	12%
grade 3 events	123	102	104	108	93	225
	3%	3%	3%	3%	2%	5%
grade 4 events	111	110	89	109	101	200
	3%	3%	2%	3%	2%	4%
grade 5 events	107	132	103	109	143	297
	3%	4%	3%	3%	4%	6%
grade 6 events	242	264	219	228	304	1062
	7%	8%	6%	6%	8%	24%
grade 7 events	1460	1536	1549	1691	1788	1573
	46%	47%	49%	50%	50%	36%

2.2 Compared Parameters

Parameter	Planned	Actual	Parameter	Planned	Actual
Instrument	ACIS	ACIS	Obspar format version number	7	7
Detector	ACIS-012367	ACIS-012367	Obspar file type	PREDICTED	ACTUAL
Grating	NONE	NONE	Obspar update status	NONE	UPDATED
Data mode	FAINT	FAINT	Number of optional ACIS chips dropped	0	0
Observation mode	SECONDARY	SECONDARY	On-chip summing requested	N	N
[deg] Pointing RA	0	188.7025083773578	Subarray requested	NONE	NONE
[deg] Pointing Dec	0	-10.97139736909799	Alternating exposures requested	N	N
[deg] Pointing Roll	0.0	52.19683973116188	[s] Primary exposure time	3.2	3.2
[mm] SIM focus pos	-1.429586	-1.428180813131781			
[mm] SIM defocus	0.1037507710433287	0.1051558262725154			
[mm] SIM translation stage pos	250.455976	250.466033080201			
[mm] SIM translation stage offset	0	-0.01005468664627074			
[s] Observation start time (MET)	416041399.560866	416041398.53586			
Observation start date	2011-03-09T07:03:20	2011-03-09T07:03:18			
[s] Observation end time (MET)	416043695.560985	416043694.53598			
Observation end date	2011-03-09T07:41:36	2011-03-09T07:41:34			
Read mode	TIMED	TIMED			

2.3 Star Slots

2.4 FID Slots

A Summary

A.1 Status

V&V Scientist	Jen Lauer
V&V Date (YYYY-MM-DD)	2012.02.08
V&V Edition	1
V&V Disposition and Status	OK
V&V Charge Time	0.23999999916553

A.2 Comments