

V&V Reference Report

L2 ASCDS Version : 8.4.3

Observation 55685 - L2 Version 3
Chandra X-Ray Center

L2 Processing Date : Feb 2 2012

Contents

1	Front	2
2	OBI	3
2.1	OBI	3
2.1.1	Images	3
2.1.2	Bias	3
2.1.3	Parameters	4
2.1.4	Events	4
2.2	Compared Parameters	5
2.3	Star Slots	6
2.4	FID Slots	6
A	Summary	7
A.1	Status	7
A.2	Comments	7

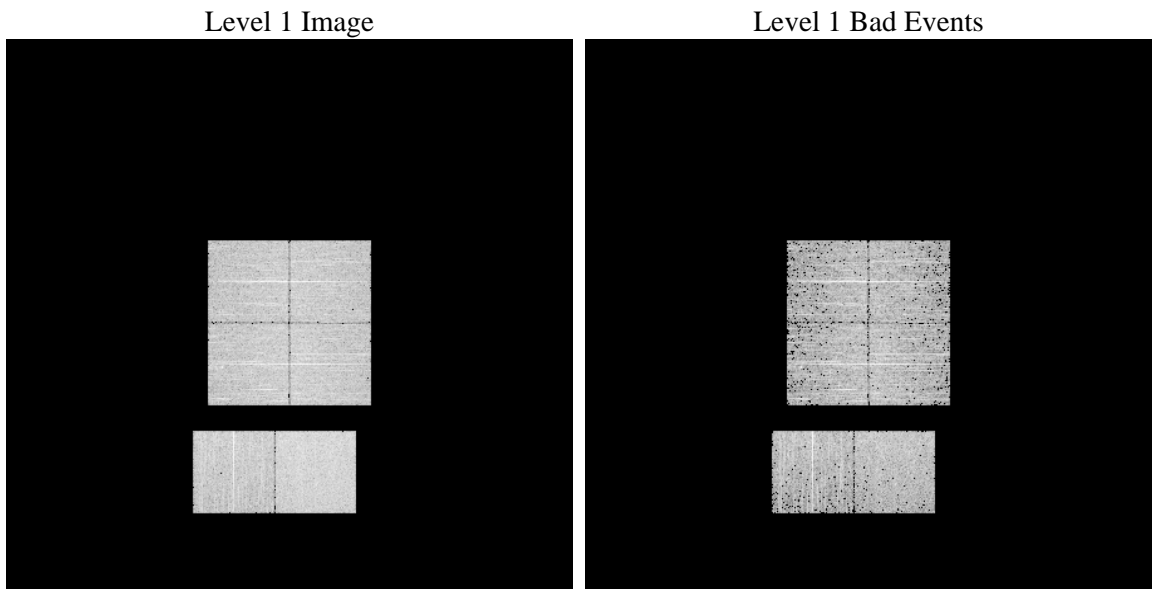
1 Front

seq_num	 	Sequence number
obs_id	55685	Observation id
title	ACIS-012367 diagnostics	Proposal title
observer	CHANDRA engineering request/realtime commanding	Principal investig
object	 	Source name
dtcycle	0	
cycle	P	events from which exps? Prim/Second/Both
ra_targ	0.0	Observer's specified target RA [deg]
dec_targ	0.0	Observer's specified target Dec [deg]
ra_nom	351.99943395064	Nominal RA [deg]
dec_nom	-56.028657015941	Nominal Dec [deg]
roll_nom	236.16090829879	Nominal Roll [deg]
revision	3	Processing version of data
ontime	3344.7109131813	Sum of GTIs [s]
livetime	3302.3581696555	Livetime [s]
ontime0	3346.4336152077	Sum of GTIs [s]
ontime1	3346.3925752044	Sum of GTIs [s]
ontime2	3346.3515352011	Sum of GTIs [s]
ontime3	3344.710863471	Sum of GTIs [s]
ontime6	3346.3104951978	Sum of GTIs [s]
ontime7	3344.7109131813	Sum of GTIs [s]
l2events	138243	Number of level 2 events

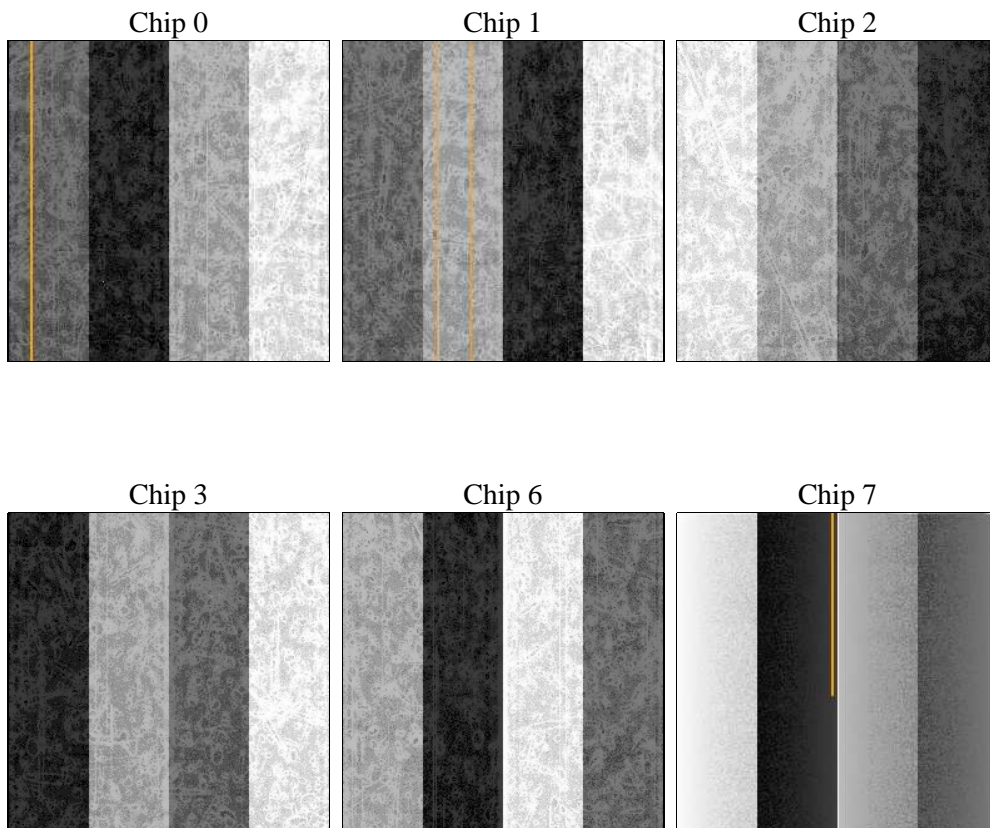
2 OBI

2.1 OBI

2.1.1 Images



2.1.2 Bias



2.1.3 Parameters

obi_num	0	Obi number	sched_exp_time	0.0	[s] Scheduled observation exposure time
ascdsver	8.4.3	Processing system revision	ontime	3344.7109131813	Sum of GTIs [s]
caldbver	4.4.7	 	ontime0	3346.4336152077	Sum of GTIs [s]
date	2012-02-03T01:15:23	Date and time of file creation	ontime1	3346.3925752044	Sum of GTIs [s]
revision	3	Processing version of data	ontime2	3346.3515352011	Sum of GTIs [s]
			ontime3	3344.710863471	Sum of GTIs [s]
			ontime6	3346.3104951978	Sum of GTIs [s]
			ontime7	3344.7109131813	Sum of GTIs [s]
			l1events	298932	Number of level 1 events

2.1.4 Events

	ccd 0	ccd 1	ccd 2	ccd 3	ccd 6	ccd 7		ccd 0	ccd 1	ccd 2	ccd 3	ccd 6	ccd 7
level 1 events	45106	46161	48084	49180	48475	61926	grade 0 events	11381	11320	11836	11887	11604	6049
rejected events	23289	24102	25883	27065	25867	26354		25%	24%	24%	24%	23%	9%
rejected %	51%	52%	53%	55%	53%	42%	grade 1 events	76	60	80	103	63	49
								0%	0%	0%	0%	0%	0%
							grade 2 events	4116	4280	3909	3894	4155	7614
								9%	9%	8%	7%	8%	12%
							grade 3 events	1456	1480	1508	1625	1570	3170
								3%	3%	3%	3%	3%	5%
							grade 4 events	1474	1458	1577	1514	1416	3132
								3%	3%	3%	3%	2%	5%
							grade 5 events	1450	1593	1503	1664	1608	4095
								3%	3%	3%	3%	3%	6%
							grade 6 events	3390	3521	3371	3195	3885	15607
								7%	7%	7%	6%	8%	25%
							grade 7 events	21763	22449	24300	25298	24174	22210
								48%	48%	50%	51%	49%	35%

2.2 Compared Parameters

Parameter	Planned	Actual	Parameter	Planned	Actual
Instrument	ACIS	ACIS	Obspar format version number	7	7
Detector	ACIS-012367	ACIS-012367	Obspar file type	PREDICTED	ACTUAL
Grating	NONE	NONE	Obspar update status	NONE	UPDATED
Data mode	FAINT	FAINT	Number of optional ACIS chips dropped	0	0
Observation mode	SECONDARY	SECONDARY	On-chip summing requested	N	N
[deg] Pointing RA	0	351.9994339506446	Subarray requested	NONE	NONE
[deg] Pointing Dec	0	-56.0286570159414	Alternating exposures requested	N	N
[deg] Pointing Roll	0.0	236.1609082987886	[s] Primary exposure time	3.2	3.2
[mm] SIM focus pos	-1.429586	-1.428180813131781			
[mm] SIM defocus	0.1037507710433287	0.1051558262725154			
[mm] SIM translation stage pos	250.455976	250.466033080201			
[mm] SIM translation stage offset	0	-0.01005468664627074			
[s] Observation start time (MET)	412641423.134855	412641422.10986			
Observation start date	2011-01-28T22:37:03	2011-01-28T22:37:02			
[s] Observation end time (MET)	412647171.335152	412647170.31016			
Observation end date	2011-01-29T00:12:51	2011-01-29T00:12:50			
Read mode	TIMED	TIMED			

2.3 Star Slots

2.4 FID Slots

A Summary

A.1 Status

V&V Scientist	Jen Lauer
V&V Date (YYYY-MM-DD)	2012.02.06
V&V Edition	1
V&V Disposition and Status	OK
V&V Charge Time	3.3447109131813

A.2 Comments

A spatial region of the original bias map for CCD = 1 suffered from anomalously high data values. Pixels in the event data that were bias-corrected by one of the original affected bias pixels may have an apparent energy shift. While the change in energy is expected to be small (~ 20 eV), it depends on many parameters that have not yet been fully explored for this bias anomaly. The bias map for CCD = 1 has been reconstructed for this processing to remove this anomaly using scaled data from a comparable bias map from another observation. The pixels affected by the anomaly are bounded by chip coordinates:
(82,1),(100,1),(100,551),(82,533)