

V&V Reference Report

L2 ASCDS Version : 8.4.3

Observation 55674 - L2 Version 2
Chandra X-Ray Center

L2 Processing Date : Feb 3 2012

Contents

1	Front	2
2	OBI	3
2.1	OBI	3
2.1.1	Images	3
2.1.2	Bias	3
2.1.3	Parameters	4
2.1.4	Events	4
2.2	Compared Parameters	5
2.3	Star Slots	6
2.4	FID Slots	6
A	Summary	7
A.1	Status	7
A.2	Comments	7

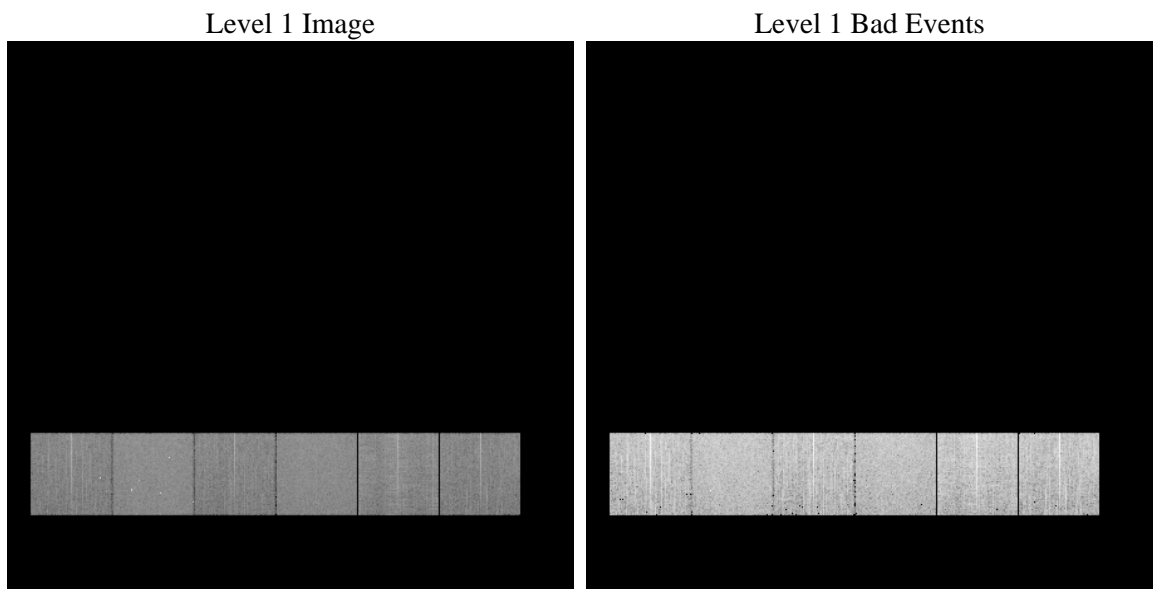
1 Front

seq_num	 	Sequence number
obs_id	55674	Observation id
title	ACIS-456789 diagnostics	Proposal title
observer	CHANDRA engineering request/realtime commanding	Principal investig
object	 	Source name
dtcycle	0	
cycle	P	events from which exps? Prim/Second/Both
ra_targ	0.0	Observer's specified target RA [deg]
dec_targ	0.0	Observer's specified target Dec [deg]
ra_nom	303.02261820222	Nominal RA [deg]
dec_nom	33.821725465187	Nominal Dec [deg]
roll_nom	16.351572765987	Nominal Roll [deg]
revision	2	Processing version of data
ontime	6099.1999773383	Sum of GTIs [s]
livetime	6021.9682347279	Livetime [s]
ontime4	6099.1999773383	Sum of GTIs [s]
ontime5	6099.1999773383	Sum of GTIs [s]
ontime6	6099.1999773383	Sum of GTIs [s]
ontime7	6099.1999773383	Sum of GTIs [s]
ontime8	6099.1999773383	Sum of GTIs [s]
ontime9	6099.1999773383	Sum of GTIs [s]
l2events	276429	Number of level 2 events

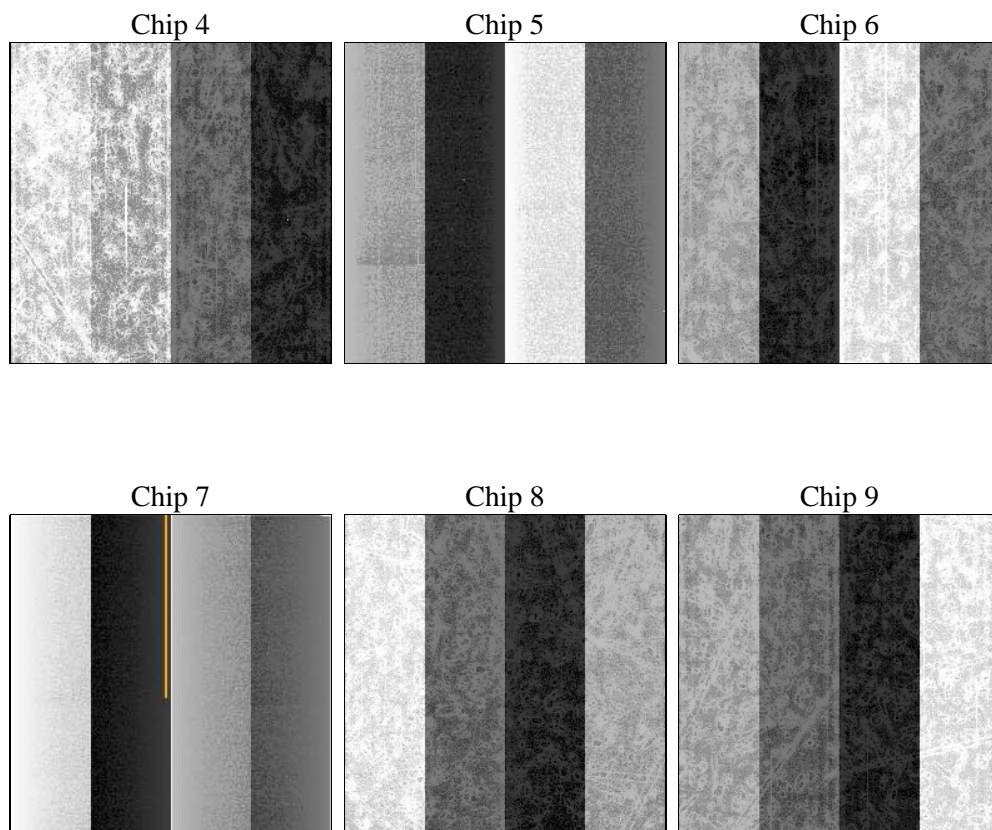
2 OBI

2.1 OBI

2.1.1 Images



2.1.2 Bias



2.1.3 Parameters

obi_num	0	Obi number	sched_exp_time	0.0	[s] Scheduled observation exposure time
ascdsver	8.4.3	Processing system revision	ontime	6099.1999773383	Sum of GTIs [s]
caldsver	4.4.7	 	ontime4	6099.1999773383	Sum of GTIs [s]
date	2012-02-03T16:38:55	Date and time of file creation	ontime5	6099.1999773383	Sum of GTIs [s]
revision	2	Processing version of data	ontime6	6099.1999773383	Sum of GTIs [s]
			ontime7	6099.1999773383	Sum of GTIs [s]
			ontime8	6099.1999773383	Sum of GTIs [s]
			ontime9	6099.1999773383	Sum of GTIs [s]
			l1events	606967	Number of level 1 events

2.1.4 Events

	ccd 4	ccd 5	ccd 6	ccd 7	ccd 8	ccd 9		ccd 4	ccd 5	ccd 6	ccd 7	ccd 8	ccd 9
level 1 events	91903	117453	90575	110655	106633	89748	grade 0 events	23423	9453	21361	10818	24410	20884
rejected events	51208	49828	49150	46502	55055	49793		25%	8%	23%	9%	22%	23%
rejected %	55%	42%	54%	42%	51%	55%	grade 1 events	223	190	132	87	160	169
								0%	0%	0%	0%	0%	0%
							grade 2 events	6361	23728	7633	13958	9910	7110
								6%	20%	8%	12%	9%	7%
							grade 3 events	2844	2957	2776	5728	3895	2767
								3%	2%	3%	5%	3%	3%
							grade 4 events	2738	2670	2680	5694	3813	2767
								2%	2%	2%	5%	3%	3%
							grade 5 events	2804	6536	2996	7372	3888	3429
								3%	5%	3%	6%	3%	3%
							grade 6 events	5345	28849	6998	27989	9575	6453
								5%	24%	7%	25%	8%	7%
							grade 7 events	48165	43070	45999	39009	50982	46169
								52%	36%	50%	35%	47%	51%

2.2 Compared Parameters

Parameter	Planned	Actual	Parameter	Planned	Actual
Instrument	ACIS	ACIS	Obspar format version number	7	7
Detector	ACIS-456789	ACIS-456789	Obspar file type	PREDICTED	ACTUAL
Grating	NONE	NONE	Obspar update status	NONE	UPDATED
Data mode	FAINT	FAINT	Number of optional ACIS chips dropped	0	0
Observation mode	SECONDARY	SECONDARY	On-chip summing requested	N	N
[deg] Pointing RA	0	303.0226182022242	Subarray requested	NONE	NONE
[deg] Pointing Dec	0	33.82172546518707	Alternating exposures requested	N	N
[deg] Pointing Roll	0.0	16.35157276598711	[s] Primary exposure time	3.2	3.2
[mm] SIM focus pos	-1.429586	-1.428180813131781			
[mm] SIM defocus	0.1037507710433287	0.1051558262725154			
[mm] SIM translation stage pos	250.455976	250.466033080201			
[mm] SIM translation stage offset	0	-0.01005468664627074			
[s] Observation start time (MET)	413097718.308475	413097717.28348			
Observation start date	2011-02-03T05:21:58	2011-02-03T05:21:57			
[s] Observation end time (MET)	413108204.059018	413108203.03402			
Observation end date	2011-02-03T08:16:44	2011-02-03T08:16:43			
Read mode	TIMED	TIMED			

2.3 Star Slots

2.4 FID Slots

A Summary

A.1 Status

V&V Scientist	Jen Lauer
V&V Date (YYYY-MM-DD)	2012.02.06
V&V Edition	1
V&V Disposition and Status	OK
V&V Charge Time	6.0991999773383

A.2 Comments