

V&V Reference Report

L2 ASCDS Version : 8.4.3

Observation 55653 - L2 Version 2
Chandra X-Ray Center

L2 Processing Date : Feb 4 2012

Contents

1	Front	2
2	OBI	3
2.1	OBI	3
2.1.1	Images	3
2.1.2	Bias	3
2.1.3	Parameters	4
2.1.4	Events	4
2.2	Compared Parameters	5
2.3	Star Slots	6
2.4	FID Slots	6
A	Summary	7
A.1	Status	7
A.2	Comments	7

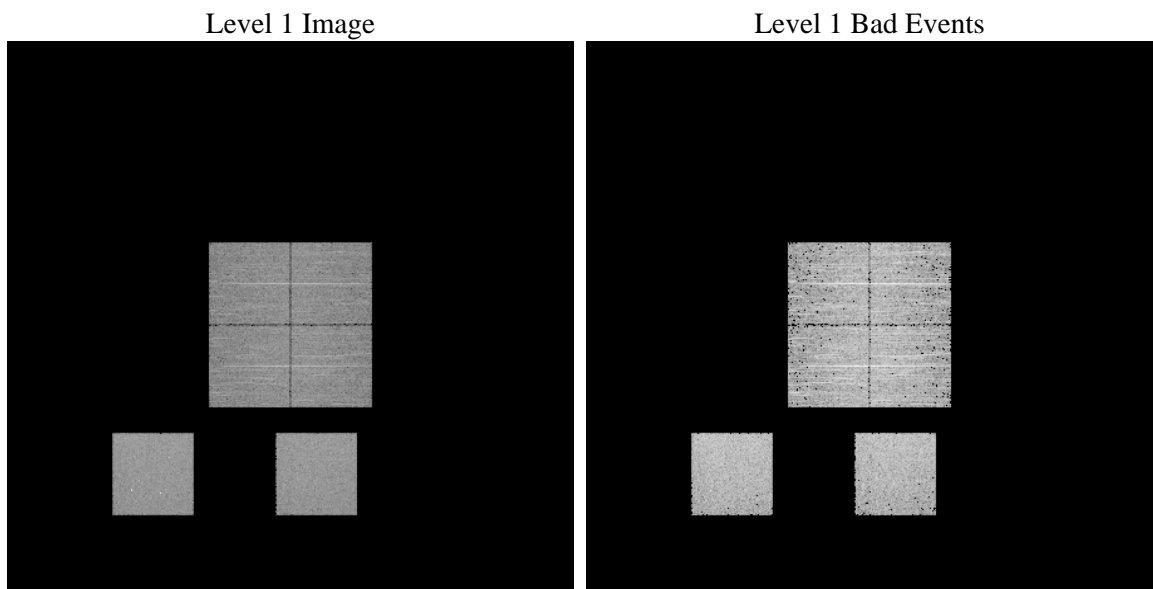
1 Front

seq_num	 	Sequence number
obs_id	55653	Observation id
title	ACIS-012357 diagnostics	Proposal title
observer	CHANDRA engineering request/realtime commanding	Principal investig
object	 	Source name
dtcycle	0	
cycle	P	events from which exps? Prim/Second/Both
ra_targ	0.0	Observer's specified target RA [deg]
dec_targ	0.0	Observer's specified target Dec [deg]
ra_nom	137.02855740449	Nominal RA [deg]
dec_nom	-11.993743775349	Nominal Dec [deg]
roll_nom	339.23696845692	Nominal Roll [deg]
revision	2	Processing version of data
ontime	4063.99998492	Sum of GTIs [s]
livetime	4012.539170064	Livetime [s]
ontime0	4063.99998492	Sum of GTIs [s]
ontime1	4063.99998492	Sum of GTIs [s]
ontime2	4063.99998492	Sum of GTIs [s]
ontime3	4063.99998492	Sum of GTIs [s]
ontime5	4063.99998492	Sum of GTIs [s]
ontime7	4063.99998492	Sum of GTIs [s]
l2events	183930	Number of level 2 events

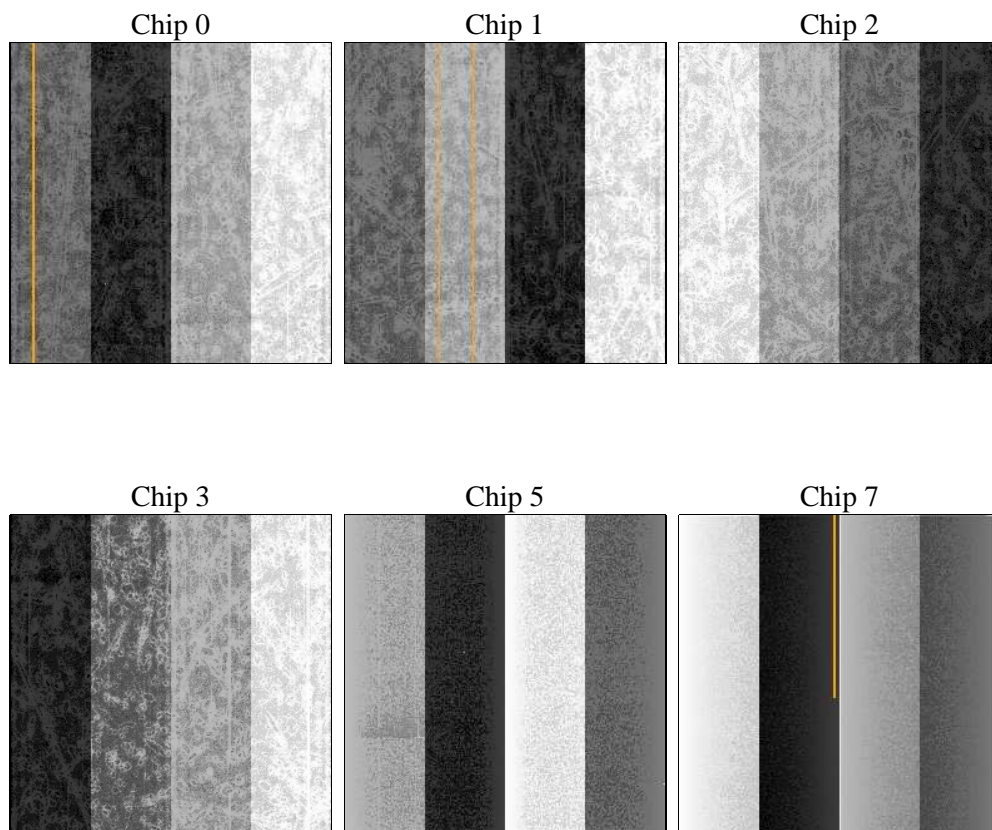
2 OBI

2.1 OBI

2.1.1 Images



2.1.2 Bias



2.1.3 Parameters

obi_num	0	Obi number	sched_exp_time	0.0	[s] Scheduled observation exposure time
ascdsver	8.4.3	Processing system revision	ontime	4063.99998492	Sum of GTIs [s]
caldsver	4.4.7	 	ontime0	4063.99998492	Sum of GTIs [s]
date	2012-02-04T06:54:39	Date and time of file creation	ontime1	4063.99998492	Sum of GTIs [s]
revision	2	Processing version of data	ontime2	4063.99998492	Sum of GTIs [s]
			ontime3	4063.99998492	Sum of GTIs [s]
			ontime5	4063.99998492	Sum of GTIs [s]
			ontime7	4063.99998492	Sum of GTIs [s]
			l1events	380979	Number of level 1 events

2.1.4 Events

	ccd 0	ccd 1	ccd 2	ccd 3	ccd 5	ccd 7		ccd 0	ccd 1	ccd 2	ccd 3	ccd 5	ccd 7
level 1 events	54148	55693	57562	59849	78235	75492	grade 0 events	13766	13427	14188	14149	6453	7622
rejected events	27888	29464	31359	33422	33077	31851		25%	24%	24%	23%	8%	10%
rejected %	51%	52%	54%	55%	42%	42%	grade 1 events	87	78	107	116	122	89
								0%	0%	0%	0%	0%	0%
							grade 2 events	4857	5160	4447	4747	15671	9479
								8%	9%	7%	7%	20%	12%
							grade 3 events	1770	1809	1854	1846	1930	4004
								3%	3%	3%	3%	2%	5%
							grade 4 events	1836	1795	1828	1835	2003	3925
								3%	3%	3%	3%	2%	5%
							grade 5 events	1822	1929	1824	2074	4208	5084
								3%	3%	3%	3%	5%	6%
							grade 6 events	4089	4100	3942	3918	19203	18719
								7%	7%	6%	6%	24%	24%
							grade 7 events	25921	27395	29372	31164	28645	26570
								47%	49%	51%	52%	36%	35%

2.2 Compared Parameters

Parameter	Planned	Actual	Parameter	Planned	Actual
Instrument	ACIS	ACIS	Obspar format version number	7	7
Detector	ACIS-012357	ACIS-012357	Obspar file type	PREDICTED	ACTUAL
Grating	NONE	NONE	Obspar update status	NONE	UPDATED
Data mode	FAINT	FAINT	Number of optional ACIS chips dropped	0	0
Observation mode	SECONDARY	SECONDARY	On-chip summing requested	N	N
[deg] Pointing RA	0	137.0285574044909	Subarray requested	NONE	NONE
[deg] Pointing Dec	0	-11.99374377534854	Alternating exposures requested	N	N
[deg] Pointing Roll	0.0	339.2369684569231	[s] Primary exposure time	3.2	3.2
[mm] SIM focus pos	-1.429586	-1.428180813131781			
[mm] SIM defocus	0.1037507710433287	0.1051558262725154			
[mm] SIM translation stage pos	250.455976	250.466033080201			
[mm] SIM translation stage offset	0	-0.01005468664627074			
[s] Observation start time (MET)	413984964.504387	413984963.4794			
Observation start date	2011-02-13T11:49:25	2011-02-13T11:49:23			
[s] Observation end time (MET)	413989566.754625	413989565.72963			
Observation end date	2011-02-13T13:06:07	2011-02-13T13:06:05			
Read mode	TIMED	TIMED			

2.3 Star Slots

2.4 FID Slots

A Summary

A.1 Status

V&V Scientist	Jen Lauer
V&V Date (YYYY-MM-DD)	2012.02.07
V&V Edition	1
V&V Disposition and Status	OK
V&V Charge Time	4.06399998492

A.2 Comments