

# V&V Reference Report

## L2 ASCDS Version : 8.4.3

Observation 55626 - L2 Version 2  
Chandra X-Ray Center

L2 Processing Date : Feb 4 2012

## Contents

<b>1</b>	<b>Front</b>	<b>2</b>
<b>2</b>	<b>OBI</b>	<b>3</b>
2.1	OBI . . . . .	3
2.1.1	Images . . . . .	3
2.1.2	Bias . . . . .	3
2.1.3	Parameters . . . . .	4
2.1.4	Events . . . . .	4
2.2	Compared Parameters . . . . .	5
2.3	Star Slots . . . . .	6
2.4	FID Slots . . . . .	6
<b>A</b>	<b>Summary</b>	<b>7</b>
A.1	Status . . . . .	7
A.2	Comments . . . . .	7

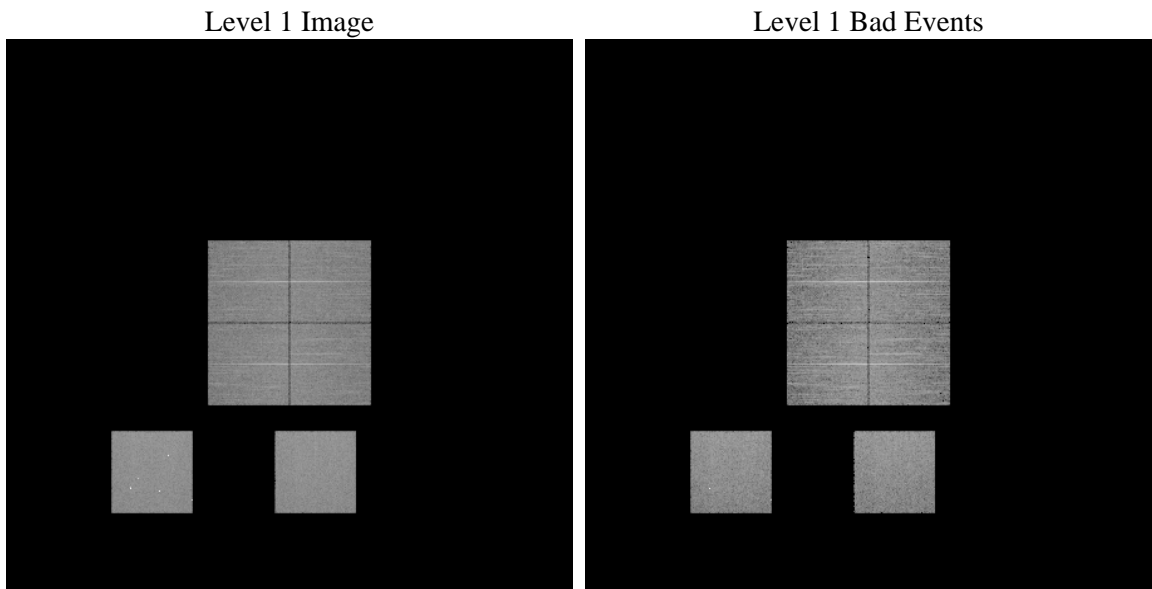
# 1 Front

seq_num	&#160	Sequence number
obs_id	55626	Observation id
title	ACIS-012357 diagnostics	Proposal title
observer	CHANDRA engineering request/realtime commanding	Principal investig
object	&#160	Source name
dtcycle	0	&#160
cycle	P	events from which exps? Prim/Second/Both
ra_targ	0.0	Observer's specified target RA [deg]
dec_targ	0.0	Observer's specified target Dec [deg]
ra_nom	180.49579628411	Nominal RA [deg]
dec_nom	-0.77165635645111	Nominal Dec [deg]
roll_nom	65.519920954287	Nominal Roll [deg]
revision	2	Processing version of data
ontime	8282.4740895033	Sum of GTIs [s]
livetime	8177.5964154748	Livetime [s]
ontime0	8282.5151195526	Sum of GTIs [s]
ontime1	8282.5561595559	Sum of GTIs [s]
ontime2	8284.7999691963	Sum of GTIs [s]
ontime3	8282.433039546	Sum of GTIs [s]
ontime5	8284.7999691963	Sum of GTIs [s]
ontime7	8282.4740895033	Sum of GTIs [s]
l2events	371816	Number of level 2 events

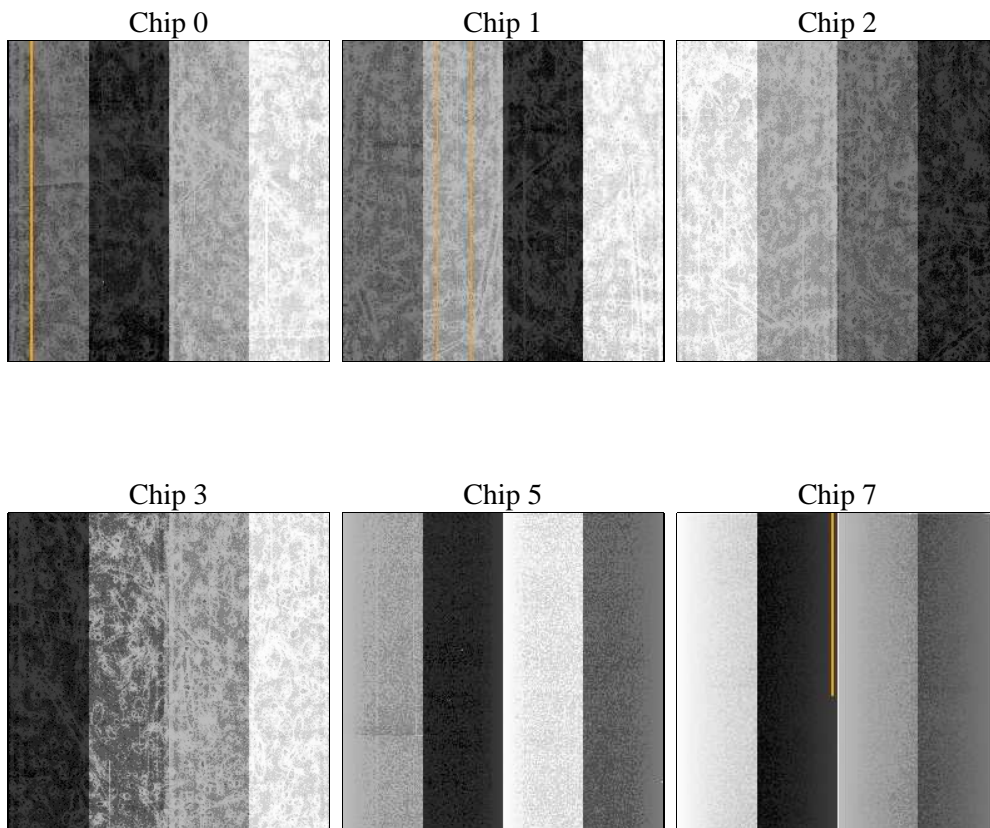
## 2 OBI

### 2.1 OBI

#### 2.1.1 Images



#### 2.1.2 Bias



### 2.1.3 Parameters

obi_num	0	Obi number	sched_exp_time	0.0	[s] Scheduled observation exposure time
ascdsver	8.4.3	Processing system revision	ontime	8282.4740895033	Sum of GTIs [s]
caldsver	4.4.7	&#160	ontime0	8282.5151195526	Sum of GTIs [s]
date	2012-02-04T21:28:35	Date and time of file creation	ontime1	8282.5561595559	Sum of GTIs [s]
revision	2	Processing version of data	ontime2	8284.7999691963	Sum of GTIs [s]
			ontime3	8282.433039546	Sum of GTIs [s]
			ontime5	8284.7999691963	Sum of GTIs [s]
			ontime7	8282.4740895033	Sum of GTIs [s]
			l1events	770019	Number of level 1 events

### 2.1.4 Events

	ccd 0	ccd 1	ccd 2	ccd 3	ccd 5	ccd 7		ccd 0	ccd 1	ccd 2	ccd 3	ccd 5	ccd 7
level 1 events	112254	112308	115557	115945	161065	152890	grade 0 events	28069	27364	28841	28893	14629	14763
rejected events	58902	58947	62078	62159	67347	65267		25%	24%	24%	24%	9%	9%
rejected %	52%	52%	53%	53%	41%	42%	grade 1 events	215	149	202	220	265	143
								0%	0%	0%	0%	0%	0%
							grade 2 events	9854	10396	9542	9572	32629	19025
								8%	9%	8%	8%	20%	12%
							grade 3 events	3667	3492	3739	3752	3796	8004
								3%	3%	3%	3%	2%	5%
							grade 4 events	3508	3534	3569	3652	3620	7750
								3%	3%	3%	3%	2%	5%
							grade 5 events	3916	3827	3534	4097	8867	10408
								3%	3%	3%	3%	5%	6%
							grade 6 events	8254	8575	7788	7936	39044	38081
								7%	7%	6%	6%	24%	24%
							grade 7 events	54771	54971	58342	57823	58215	54716
								48%	48%	50%	49%	36%	35%

## 2.2 Compared Parameters

Parameter	Planned	Actual	Parameter	Planned	Actual
Instrument	ACIS	ACIS	Obspar format version number	7	7
Detector	ACIS-012357	ACIS-012357	Obspar file type	PREDICTED	ACTUAL
Grating	NONE	NONE	Obspar update status	NONE	UPDATED
Data mode	FAINT	FAINT	Number of optional ACIS chips dropped	0	0
Observation mode	SECONDARY	SECONDARY	On-chip summing requested	N	N
[deg] Pointing RA	0	180.4957962841107	Subarray requested	NONE	NONE
[deg] Pointing Dec	0	-0.771656356451114	Alternating exposures requested	N	N
[deg] Pointing Roll	0.0	65.51992095428704	[s] Primary exposure time	3.2	3.2
[mm] SIM focus pos	-1.429586	-1.428180813131781			
[mm] SIM defocus	0.1037507710433287	0.1051558262725154			
[mm] SIM translation stage pos	250.455976	250.466033080201			
[mm] SIM translation stage offset	0	-0.01005468664627074			
[s] Observation start time (MET)	414929227.353258	414929226.32827			
Observation start date	2011-02-24T10:07:07	2011-02-24T10:07:06			
[s] Observation end time (MET)	414939407.653785	414939406.62879			
Observation end date	2011-02-24T12:56:48	2011-02-24T12:56:46			
Read mode	TIMED	TIMED			

## **2.3 Star Slots**

## **2.4 FID Slots**

## A Summary

### A.1 Status

V&V Scientist	Jen Lauer
V&V Date (YYYY-MM-DD)	2012.02.08
V&V Edition	1
V&V Disposition and Status	OK
V&V Charge Time	8.2824740895033

### A.2 Comments