

# V&V Reference Report

## L2 ASCDS Version : 8.4.3

Observation 55624 - L2 Version 2  
Chandra X-Ray Center

L2 Processing Date : Feb 4 2012

## Contents

<b>1</b>	<b>Front</b>	<b>2</b>
<b>2</b>	<b>OBI</b>	<b>3</b>
2.1	OBI . . . . .	3
2.1.1	Images . . . . .	3
2.1.2	Bias . . . . .	3
2.1.3	Parameters . . . . .	4
2.1.4	Events . . . . .	4
2.2	Compared Parameters . . . . .	5
2.3	Star Slots . . . . .	6
2.4	FID Slots . . . . .	6
<b>A</b>	<b>Summary</b>	<b>7</b>
A.1	Status . . . . .	7
A.2	Comments . . . . .	7

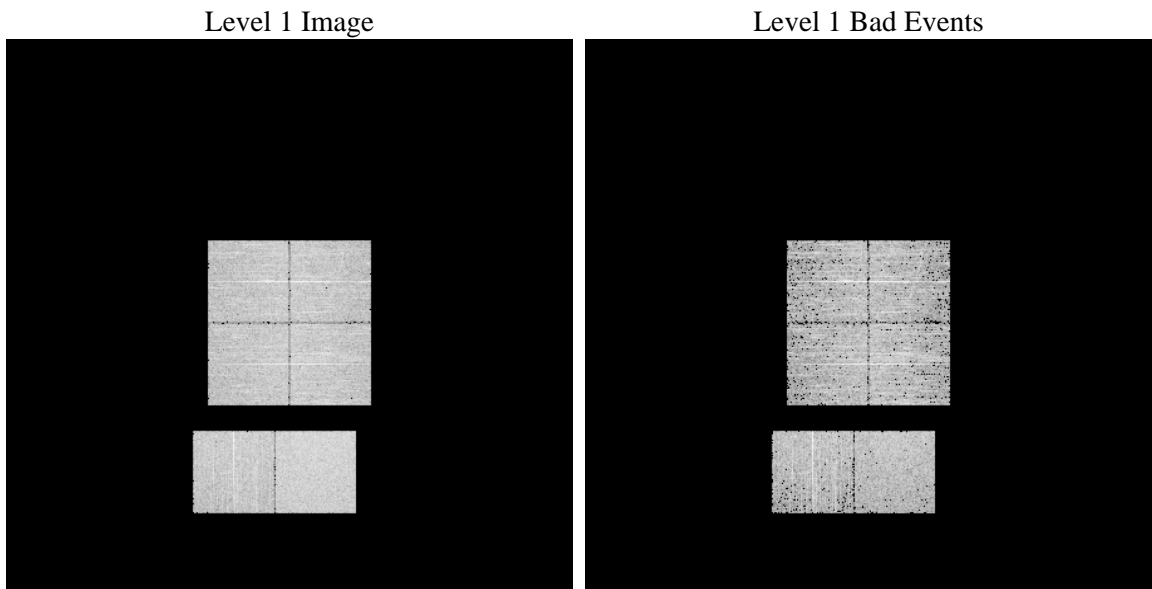
# 1 Front

seq_num	&#160	Sequence number
obs_id	55624	Observation id
title	ACIS-012367 diagnostics	Proposal title
observer	CHANDRA engineering request/realtime commanding	Principal investig
object	&#160	Source name
dtcycle	0	&#160
cycle	P	events from which exps? Prim/Second/Both
ra_targ	0.0	Observer's specified target RA [deg]
dec_targ	0.0	Observer's specified target Dec [deg]
ra_nom	136.02225302343	Nominal RA [deg]
dec_nom	-4.2240916185704	Nominal Dec [deg]
roll_nom	295.10467013848	Nominal Roll [deg]
revision	2	Processing version of data
ontime	3241.5999879837	Sum of GTIs [s]
livetime	3200.5528970787	Livetime [s]
ontime0	3241.5999879837	Sum of GTIs [s]
ontime1	3241.5999879837	Sum of GTIs [s]
ontime2	3241.5999879837	Sum of GTIs [s]
ontime3	3241.5999879837	Sum of GTIs [s]
ontime6	3241.5999879837	Sum of GTIs [s]
ontime7	3241.5999879837	Sum of GTIs [s]
l2events	132106	Number of level 2 events

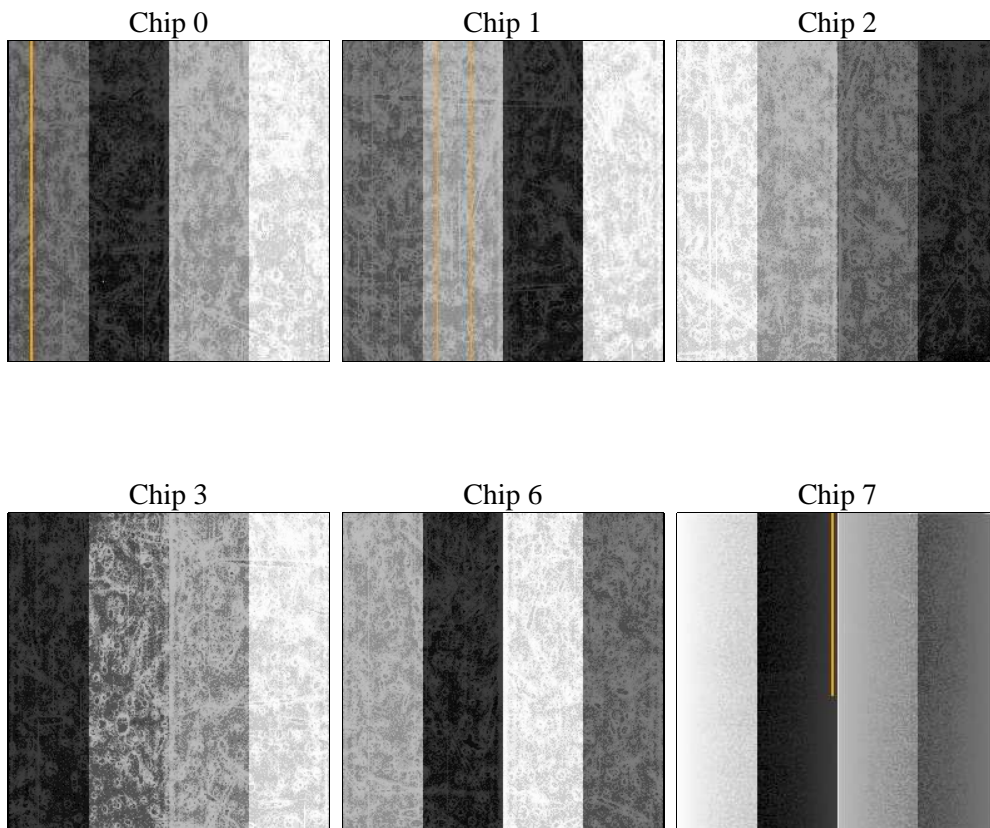
## 2 OBI

### 2.1 OBI

#### 2.1.1 Images



#### 2.1.2 Bias



### 2.1.3 Parameters

obi_num	0	Obi number	sched_exp_time	0.0	[s] Scheduled observation exposure time
ascdsver	8.4.3	Processing system revision	ontime	3241.5999879837	Sum of GTIs [s]
caldbver	4.4.7	&#160	ontime0	3241.5999879837	Sum of GTIs [s]
date	2012-02-04T22:01:52	Date and time of file creation	ontime1	3241.5999879837	Sum of GTIs [s]
revision	2	Processing version of data	ontime2	3241.5999879837	Sum of GTIs [s]
			ontime3	3241.5999879837	Sum of GTIs [s]
			ontime6	3241.5999879837	Sum of GTIs [s]
			ontime7	3241.5999879837	Sum of GTIs [s]
			l1events	293516	Number of level 1 events

### 2.1.4 Events

	ccd 0	ccd 1	ccd 2	ccd 3	ccd 6	ccd 7		ccd 0	ccd 1	ccd 2	ccd 3	ccd 6	ccd 7
level 1 events	45294	45524	44998	49033	48384	60283	grade 0 events	11069	11061	11394	11597	11306	5846
rejected events	24473	24476	24043	27879	26687	26093		24%	24%	25%	23%	23%	9%
rejected %	54%	53%	53%	56%	55%	43%	grade 1 events	74	58	76	71	62	52
								0%	0%	0%	0%	0%	0%
							grade 2 events	3892	4109	3741	3765	4016	7295
								8%	9%	8%	7%	8%	12%
							grade 3 events	1480	1382	1405	1503	1502	3112
								3%	3%	3%	3%	3%	5%
							grade 4 events	1453	1459	1523	1526	1431	3131
								3%	3%	3%	3%	2%	5%
							grade 5 events	1514	1550	1494	1688	1645	4136
								3%	3%	3%	3%	3%	6%
							grade 6 events	3212	3342	3192	3047	3758	15281
								7%	7%	7%	6%	7%	25%
							grade 7 events	22600	22563	22173	25836	24664	21430
								49%	49%	49%	52%	50%	35%

## 2.2 Compared Parameters

Parameter	Planned	Actual
Instrument	ACIS	ACIS
Detector	ACIS-012367	ACIS-012367
Grating	NONE	NONE
Data mode	FAINT	FAINT
Observation mode	SECONDARY	SECONDARY
[deg] Pointing RA	0	136.0222530234327
[deg] Pointing Dec	0	-4.224091618570442
[deg] Pointing Roll	0.0	295.1046701384845
[mm] SIM focus pos	-1.4281808131	-1.4281808131
[mm] SIM defocus	0.1051557500557434	0.1051557500557434
[mm] SIM translation stage pos	250.4660330802	250.4660330802
[mm] SIM translation stage offset	-0.01005726120527584	-0.01005726120527584
[s] Observation start time (MET)	415126781.763495	415126781.763495
Observation start date	2011-02-26T16:59:42	2011-02-26T16:59:41
[s] Observation end time (MET)	415131329.63449	415131329.63449
Observation end date	2011-02-26T18:15:30	2011-02-26T18:15:29
Read mode	TIMED	TIMED

Parameter	Planned	Actual
Obspar format version number	7	7
Obspar file type	PREDICTED	ACTUAL
Obspar update status	OVERRIDE	OVERRIDE
Number of optional ACIS chips dropped	0	0
On-chip summing requested	N	N
Subarray requested	NONE	NONE
Alternating exposures requested	N	N
[s] Primary exposure time	3.2	3.2

## 2.3 Star Slots

## 2.4 FID Slots

## A Summary

### A.1 Status

V&V Scientist	Jen Lauer
V&V Date (YYYY-MM-DD)	2012.02.07
V&V Edition	1
V&V Disposition and Status	OK
V&V Charge Time	3.2415999879837

### A.2 Comments