

V&V Reference Report

L2 ASCDS Version : 8.4.3

Observation 55617 - L2 Version 2
Chandra X-Ray Center

L2 Processing Date : Feb 5 2012

Contents

1	Front	2
2	OBI	3
2.1	OBI	3
2.1.1	Images	3
2.1.2	Bias	3
2.1.3	Parameters	4
2.1.4	Events	4
2.2	Compared Parameters	5
2.3	Star Slots	6
2.4	FID Slots	6
A	Summary	7
A.1	Status	7
A.2	Comments	7

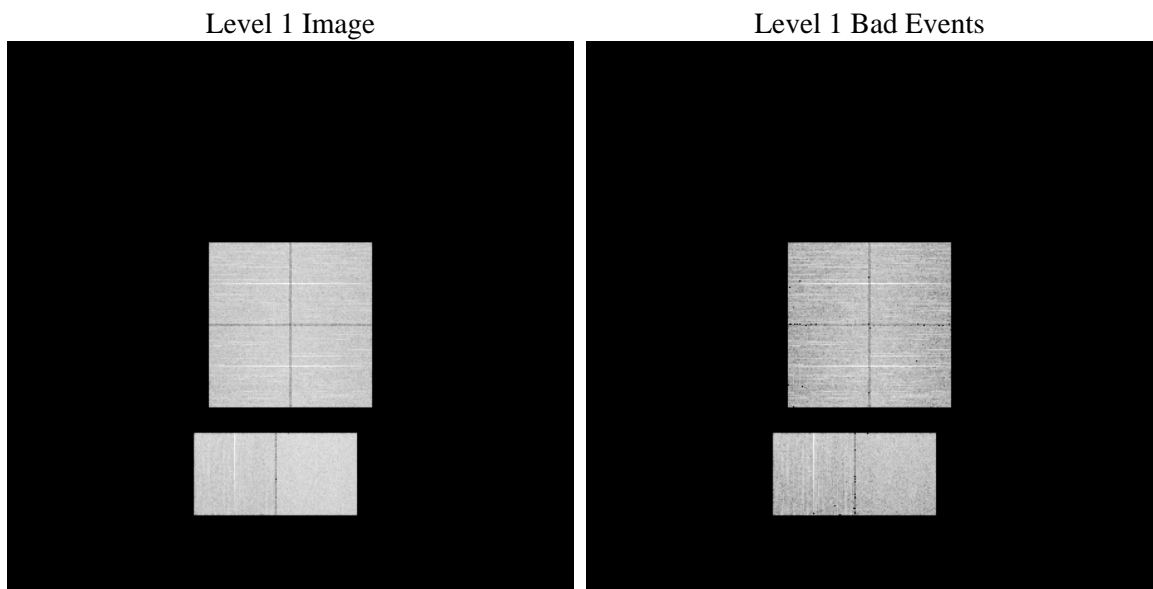
1 Front

seq_num	 	Sequence number
obs_id	55617	Observation id
title	ACIS-012367 diagnostics	Proposal title
observer	CHANDRA engineering request/realtime commanding	Principal investig
object	 	Source name
dtcycle	0	
cycle	P	events from which exps? Prim/Second/Both
ra_targ	0.0	Observer's specified target RA [deg]
dec_targ	0.0	Observer's specified target Dec [deg]
ra_nom	151.0295928657	Nominal RA [deg]
dec_nom	-15.496555262323	Nominal Dec [deg]
roll_nom	333.91485449993	Nominal Roll [deg]
revision	2	Processing version of data
ontime	7480.4842106104	Sum of GTIs [s]
livetime	7385.7618153288	Livetime [s]
ontime0	7480.4431706071	Sum of GTIs [s]
ontime1	7480.4021306038	Sum of GTIs [s]
ontime2	7480.3610906005	Sum of GTIs [s]
ontime3	7477.2842302918	Sum of GTIs [s]
ontime6	7480.3200505972	Sum of GTIs [s]
ontime7	7480.4842106104	Sum of GTIs [s]
l2events	301681	Number of level 2 events

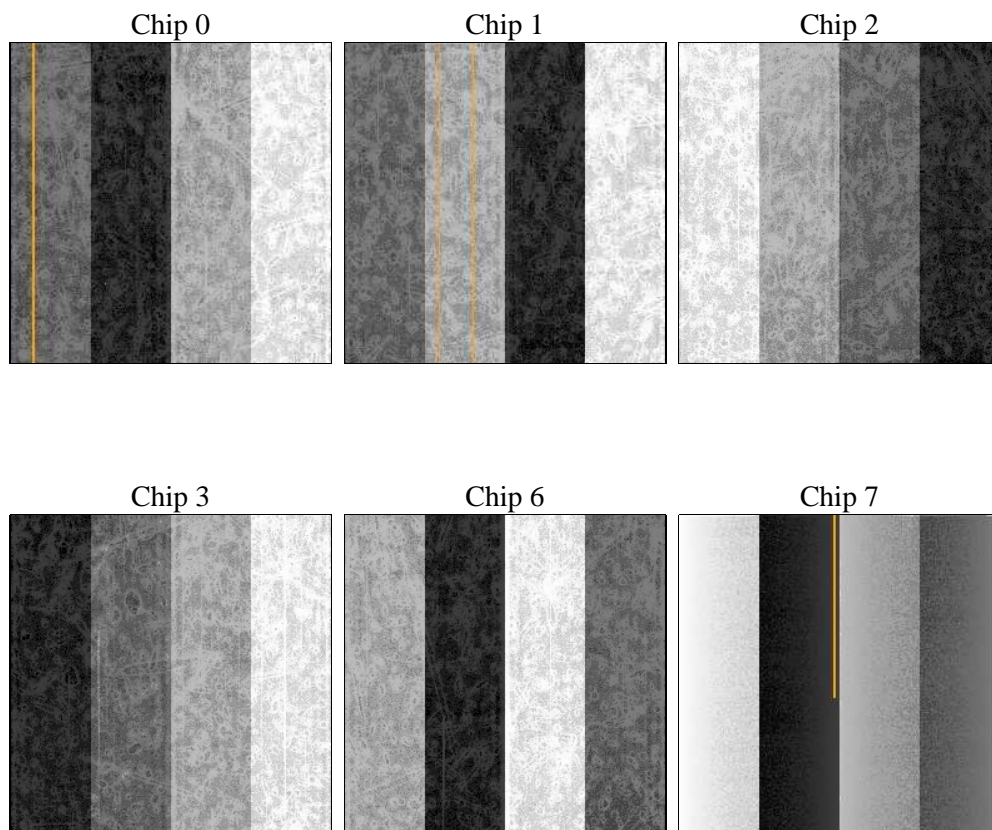
2 OBI

2.1 OBI

2.1.1 Images



2.1.2 Bias



2.1.3 Parameters

obi_num	0	Obi number	sched_exp_time	0.0	[s] Scheduled observation exposure time
ascdsver	8.4.3	Processing system revision	ontime	7480.4842106104	Sum of GTIs [s]
caldsver	4.4.7	 	ontime0	7480.4431706071	Sum of GTIs [s]
date	2012-02-05T14:34:02	Date and time of file creation	ontime1	7480.4021306038	Sum of GTIs [s]
revision	2	Processing version of data	ontime2	7480.3610906005	Sum of GTIs [s]
			ontime3	7477.2842302918	Sum of GTIs [s]
			ontime6	7480.3200505972	Sum of GTIs [s]
			ontime7	7480.4842106104	Sum of GTIs [s]
			l1events	652686	Number of level 1 events

2.1.4 Events

	ccd 0	ccd 1	ccd 2	ccd 3	ccd 6	ccd 7		ccd 0	ccd 1	ccd 2	ccd 3	ccd 6	ccd 7
level 1 events	102711	101462	102582	104282	106170	135479	grade 0 events	25119	24988	25573	25994	25567	12705
rejected events	54883	52933	54893	56143	56532	57972		24%	24%	24%	24%	24%	9%
rejected %	53%	52%	53%	53%	53%	42%	grade 1 events	173	148	196	157	157	109
								0%	0%	0%	0%	0%	0%
							grade 2 events	8829	9271	8414	8350	8972	16833
								8%	9%	8%	8%	8%	12%
							grade 3 events	3213	3257	3323	3246	3338	6926
								3%	3%	3%	3%	3%	5%
							grade 4 events	3194	3384	3280	3478	3292	7032
								3%	3%	3%	3%	3%	5%
							grade 5 events	3382	3343	3195	3582	3607	9046
								3%	3%	3%	3%	3%	6%
							grade 6 events	7493	7651	7118	7089	8484	34047
								7%	7%	6%	6%	7%	25%
							grade 7 events	51308	49420	51483	52386	52753	48781
								49%	48%	50%	50%	49%	36%

2.2 Compared Parameters

Parameter	Planned	Actual	Parameter	Planned	Actual
Instrument	ACIS	ACIS	Obspar format version number	7	7
Detector	ACIS-012367	ACIS-012367	Obspar file type	PREDICTED	ACTUAL
Grating	NONE	NONE	Obspar update status	NONE	UPDATED
Data mode	FAINT	FAINT	Number of optional ACIS chips dropped	0	0
Observation mode	SECONDARY	SECONDARY	On-chip summing requested	N	N
[deg] Pointing RA	0	151.0295928656995	Subarray requested	NONE	NONE
[deg] Pointing Dec	0	-15.49655526232329	Alternating exposures requested	N	N
[deg] Pointing Roll	0.0	333.9148544999341	[s] Primary exposure time	3.2	3.2
[mm] SIM focus pos	-1.429586	-1.428180813131781			
[mm] SIM defocus	0.1037507710433287	0.1051558262725154			
[mm] SIM translation stage pos	250.455976	250.466033080201			
[mm] SIM translation stage offset	0	-0.01005468664627074			
[s] Observation start time (MET)	415382955.926756	415382954.90175			
Observation start date	2011-03-01T16:09:16	2011-03-01T16:09:14			
[s] Observation end time (MET)	415394179.677337	415394178.65234			
Observation end date	2011-03-01T19:16:20	2011-03-01T19:16:18			
Read mode	TIMED	TIMED			

2.3 Star Slots

2.4 FID Slots

A Summary

A.1 Status

V&V Scientist	Jen Lauer
V&V Date (YYYY-MM-DD)	2012.02.08
V&V Edition	1
V&V Disposition and Status	OK
V&V Charge Time	7.4804842106104

A.2 Comments