

# V&V Reference Report

## L2 ASCDS Version : 8.4.3

Observation 55605 - L2 Version 2  
Chandra X-Ray Center

L2 Processing Date : Feb 5 2012

## Contents

<b>1</b>	<b>Front</b>	<b>2</b>
<b>2</b>	<b>OBI</b>	<b>3</b>
2.1	OBI . . . . .	3
2.1.1	Images . . . . .	3
2.1.2	Bias . . . . .	3
2.1.3	Parameters . . . . .	4
2.1.4	Events . . . . .	4
2.2	Compared Parameters . . . . .	5
2.3	Star Slots . . . . .	6
2.4	FID Slots . . . . .	6
<b>A</b>	<b>Summary</b>	<b>7</b>
A.1	Status . . . . .	7
A.2	Comments . . . . .	7

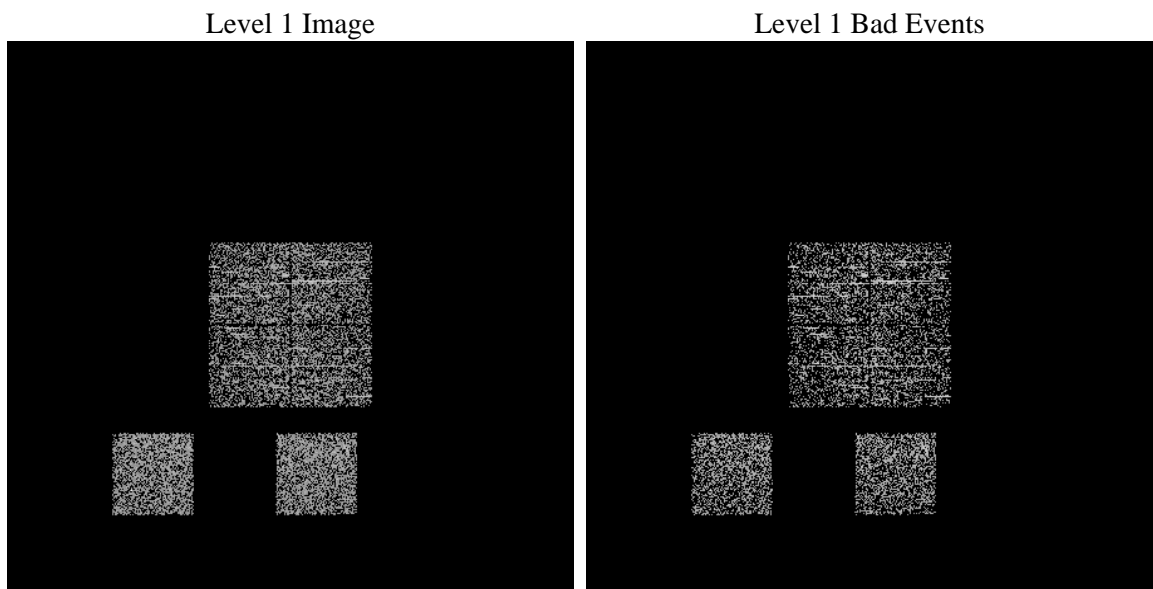
# 1 Front

seq_num	&#160	Sequence number
obs_id	55605	Observation id
title	ACIS-012357 diagnostics	Proposal title
observer	CHANDRA engineering request/realtime commanding	Principal investig
object	&#160	Source name
dtcycle	0	&#160
cycle	P	events from which exps? Prim/Second/Both
ra_targ	0.0	Observer's specified target RA [deg]
dec_targ	0.0	Observer's specified target Dec [deg]
ra_nom	235.91266163721	Nominal RA [deg]
dec_nom	-26.031713512384	Nominal Dec [deg]
roll_nom	73.714082221466	Nominal Roll [deg]
revision	2	Processing version of data
ontime	172.36862254143	Sum of GTIs [s]
livetime	170.18598725488	Livetime [s]
ontime0	172.32758253813	Sum of GTIs [s]
ontime1	172.28654253483	Sum of GTIs [s]
ontime2	172.24550253153	Sum of GTIs [s]
ontime3	172.40966254473	Sum of GTIs [s]
ontime5	172.20446252823	Sum of GTIs [s]
ontime7	172.36862254143	Sum of GTIs [s]
l2events	7765	Number of level 2 events

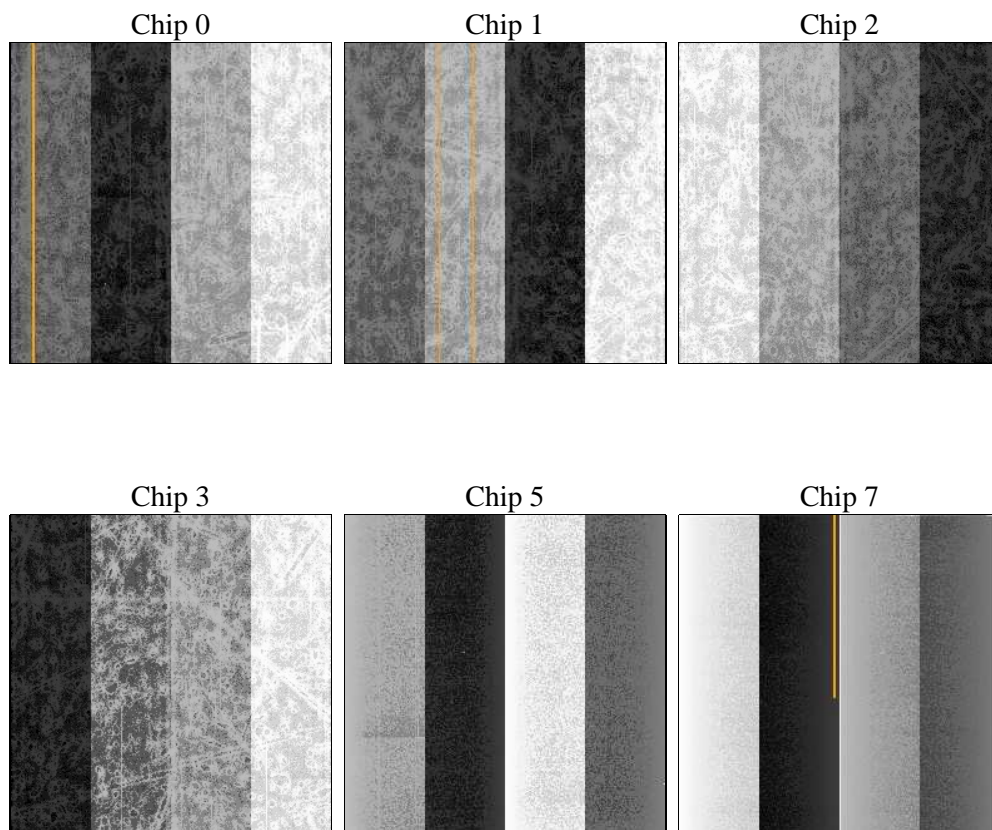
## 2 OBI

### 2.1 OBI

#### 2.1.1 Images



#### 2.1.2 Bias



### 2.1.3 Parameters

obi_num	1	Obi number	sched_exp_time	0.0	[s] Scheduled observation exposure time
ascdsver	8.4.3	Processing system revision	ontime	172.36862254143	Sum of GTIs [s]
caldsver	4.4.7	&#160	ontime0	172.32758253813	Sum of GTIs [s]
date	2012-02-05T17:35:21	Date and time of file creation	ontime1	172.28654253483	Sum of GTIs [s]
revision	2	Processing version of data	ontime2	172.24550253153	Sum of GTIs [s]
			ontime3	172.40966254473	Sum of GTIs [s]
			ontime5	172.20446252823	Sum of GTIs [s]
			ontime7	172.36862254143	Sum of GTIs [s]
			l1events	23966	Number of level 1 events

### 2.1.4 Events

	ccd 0	ccd 1	ccd 2	ccd 3	ccd 5	ccd 7
level 1 events	3717	3766	3417	3459	4896	4711
rejected events	2605	2612	2296	2366	2943	2905
rejected %	70%	69%	67%	68%	60%	61%

	ccd 0	ccd 1	ccd 2	ccd 3	ccd 5	ccd 7
grade 0 events	849	862	899	831	519	470
	22%	22%	26%	24%	10%	9%
grade 1 events	9	10	3	5	27	8
	0%	0%	0%	0%	0%	0%
grade 2 events	318	323	290	283	968	605
	8%	8%	8%	8%	19%	12%
grade 3 events	112	148	112	111	123	227
	3%	3%	3%	3%	2%	4%
grade 4 events	118	117	119	150	118	229
	3%	3%	3%	4%	2%	4%
grade 5 events	124	120	106	134	253	307
	3%	3%	3%	3%	5%	6%
grade 6 events	260	273	266	247	1196	1156
	6%	7%	7%	7%	24%	24%
grade 7 events	1927	1913	1622	1698	1692	1709
	51%	50%	47%	49%	34%	36%

## 2.2 Compared Parameters

Parameter	Planned	Actual	Parameter	Planned	Actual
Instrument	ACIS	ACIS	Obspar format version number	7	7
Detector	ACIS-012357	ACIS-012357	Obspar file type	PREDICTED	ACTUAL
Grating	NONE	NONE	Obspar update status	NONE	UPDATED
Data mode	FAINT	FAINT	Number of optional ACIS chips dropped	0	0
Observation mode	SECONDARY	SECONDARY	On-chip summing requested	N	N
[deg] Pointing RA	0	235.9126616372083	Subarray requested	NONE	NONE
[deg] Pointing Dec	0	-26.03171351238354	Alternating exposures requested	N	N
[deg] Pointing Roll	0.0	73.7140822214659	[s] Primary exposure time	3.2	3.2
[mm] SIM focus pos	-1.429586	-1.428180813131781			
[mm] SIM defocus	0.1037507710433287	0.1051558262725154			
[mm] SIM translation stage pos	250.455976	250.466033080201			
[mm] SIM translation stage offset	0	-0.01005468664627074			
[s] Observation start time (MET)	416039767.760782	416039766.73578			
Observation start date	2011-03-09T06:36:08	2011-03-09T06:36:06			
[s] Observation end time (MET)	416041399.560866	416041398.53586			
Observation end date	2011-03-09T07:03:20	2011-03-09T07:03:18			
Read mode	TIMED	TIMED			

## 2.3 Star Slots

## 2.4 FID Slots

# A Summary

## A.1 Status

V&V Scientist	Jen Lauer
V&V Date (YYYY-MM-DD)	2012.02.08
V&V Edition	1
V&V Disposition and Status	OK
V&V Charge Time	0.17236862254143

## A.2 Comments

Obsid 55605 was not in aspect mode = KALMAN during this observation. This obsid was in the load; however an ACIS anomaly for obsid 12934 caused the ACIS team to interrupt this CTI obsid before it achieved Kalman lock in order to start the test of the anomaly (obsid 62807). That is the reason this obsid has an ONTIME of 172 seconds. As soon as the ACIS team saw this obsid start to collect data, the obsid was immediately changed by CAP and the anomaly test was initiated. The bias maps were successfully collected for this obsid.