

V&V Reference Report

L2 ASCDS Version : 8.4.3

Observation 55595 - L2 Version 2
Chandra X-Ray Center

L2 Processing Date : Feb 6 2012

Contents

1	Front	2
2	OBI	3
2.1	OBI	3
2.1.1	Images	3
2.1.2	Bias	3
2.1.3	Parameters	4
2.1.4	Events	4
2.2	Compared Parameters	5
2.3	Star Slots	6
2.4	FID Slots	6
A	Summary	7
A.1	Status	7
A.2	Comments	7

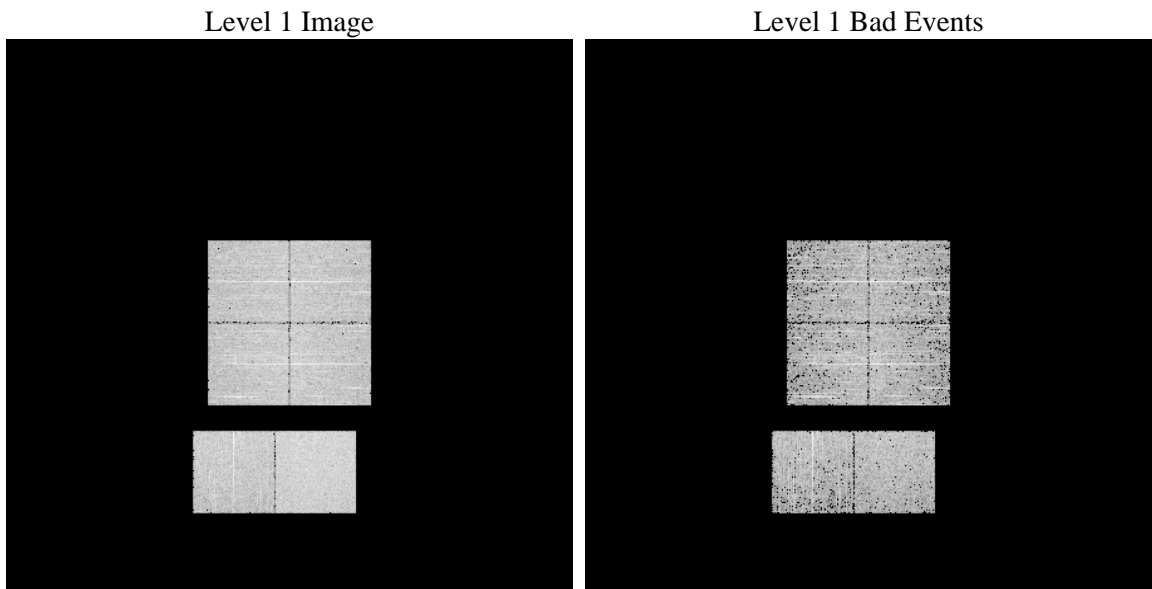
1 Front

seq_num	 	Sequence number
obs_id	55595	Observation id
title	ACIS-012367 diagnostics	Proposal title
observer	CHANDRA engineering request/realtime commanding	Principal investig
object	 	Source name
dtcycle	0	
cycle	P	events from which exps? Prim/Second/Both
ra_targ	0.0	Observer's specified target RA [deg]
dec_targ	0.0	Observer's specified target Dec [deg]
ra_nom	147.99111299424	Nominal RA [deg]
dec_nom	-9.727257929809	Nominal Dec [deg]
roll_nom	294.1607510194	Nominal Roll [deg]
revision	2	Processing version of data
ontime	3285.218958199	Sum of GTIs [s]
livetime	3243.6195376289	Livetime [s]
ontime0	3285.2599982023	Sum of GTIs [s]
ontime1	3286.3999878168	Sum of GTIs [s]
ontime2	3286.3999878168	Sum of GTIs [s]
ontime3	3285.1779181957	Sum of GTIs [s]
ontime6	3286.3999878168	Sum of GTIs [s]
ontime7	3285.218958199	Sum of GTIs [s]
l2events	130662	Number of level 2 events

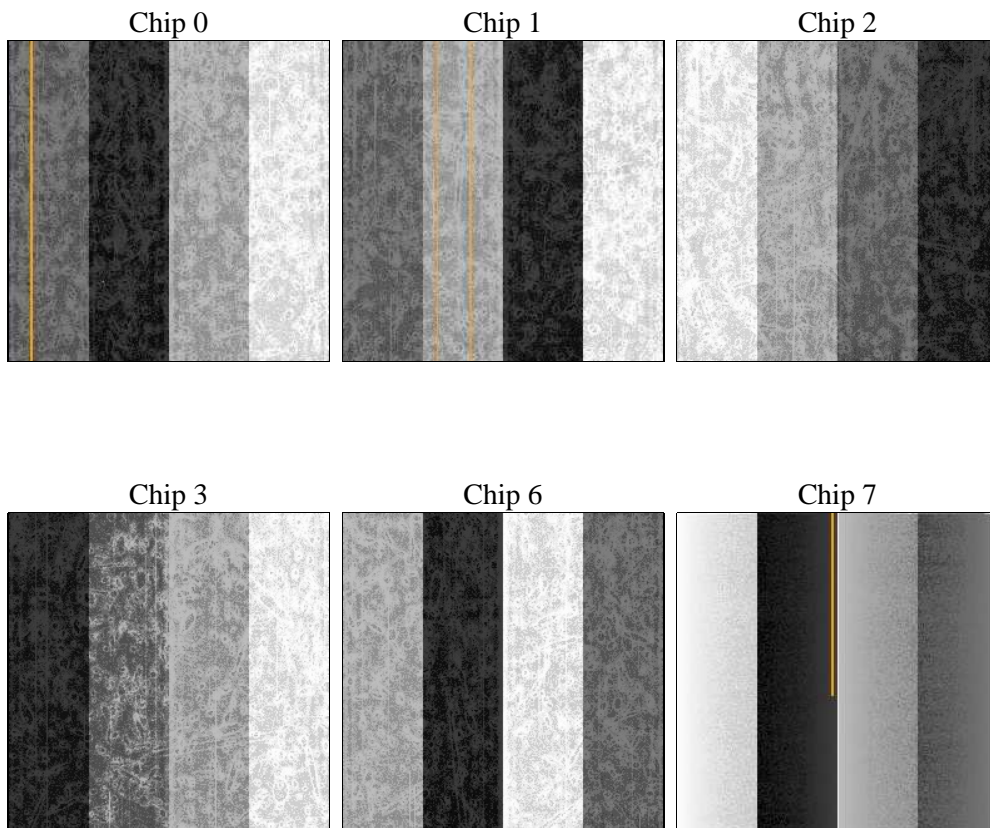
2 OBI

2.1 OBI

2.1.1 Images



2.1.2 Bias



2.1.3 Parameters

obi_num	1	Obi number	sched_exp_time	0.0	[s] Scheduled observation exposure time
ascdsver	8.4.3	Processing system revision	ontime	3285.218958199	Sum of GTIs [s]
caldsver	4.4.7	 	ontime0	3285.2599982023	Sum of GTIs [s]
date	2012-02-06T09:58:24	Date and time of file creation	ontime1	3286.3999878168	Sum of GTIs [s]
revision	2	Processing version of data	ontime2	3286.3999878168	Sum of GTIs [s]
			ontime3	3285.1779181957	Sum of GTIs [s]
			ontime6	3286.3999878168	Sum of GTIs [s]
			ontime7	3285.218958199	Sum of GTIs [s]
			l1events	275912	Number of level 1 events

2.1.4 Events

	ccd 0	ccd 1	ccd 2	ccd 3	ccd 6	ccd 7		ccd 0	ccd 1	ccd 2	ccd 3	ccd 6	ccd 7
level 1 events	42105	42709	44316	44483	45220	57079	grade 0 events	11120	10788	11184	11087	11282	5727
rejected events	21029	21901	23579	23664	23556	23893		26%	25%	25%	24%	24%	10%
rejected %	49%	51%	53%	53%	52%	41%	grade 1 events	76	46	75	60	59	33
								0%	0%	0%	0%	0%	0%
							grade 2 events	3891	4041	3689	3730	3991	7125
								9%	9%	8%	8%	8%	12%
							grade 3 events	1445	1348	1411	1391	1425	3048
								3%	3%	3%	3%	3%	5%
							grade 4 events	1430	1397	1353	1543	1372	2997
								3%	3%	3%	3%	3%	5%
							grade 5 events	1354	1460	1339	1552	1502	3880
								3%	3%	3%	3%	3%	6%
							grade 6 events	3190	3255	3114	3068	3616	14289
								7%	7%	7%	6%	7%	25%
							grade 7 events	19599	20374	22151	22052	21973	19980
								46%	47%	49%	49%	48%	35%

2.2 Compared Parameters

Parameter	Planned	Actual
Instrument	ACIS	ACIS
Detector	ACIS-012367	ACIS-012367
Grating	NONE	NONE
Data mode	FAINT	FAINT
Observation mode	SECONDARY	SECONDARY
[deg] Pointing RA	0	147.9911129942388
[deg] Pointing Dec	0	-9.727257929808951
[deg] Pointing Roll	0.0	294.1607510194028
[mm] SIM focus pos	-1.429586	-1.428180813131781
[mm] SIM defocus	0.1037507710433287	0.1051558262725154
[mm] SIM translation stage pos	250.455976	250.466033080201
[mm] SIM translation stage offset	0	-0.01005468664627074
[s] Observation start time (MET)	416497661.934509	416497660.9095
Observation start date	2011-03-14T13:47:42	2011-03-14T13:47:40
[s] Observation end time (MET)	416502668.034768	416502667.00976
Observation end date	2011-03-14T15:11:08	2011-03-14T15:11:07
Read mode	TIMED	TIMED

Parameter	Planned	Actual
Obspar format version number	7	7
Obspar file type	PREDICTED	ACTUAL
Obspar update status	NONE	UPDATED
Number of optional ACIS chips dropped	0	0
On-chip summing requested	N	N
Subarray requested	NONE	NONE
Alternating exposures requested	N	N
[s] Primary exposure time	3.2	3.2

2.3 Star Slots

2.4 FID Slots

A Summary

A.1 Status

V&V Scientist	Jen Lauer
V&V Date (YYYY-MM-DD)	2012.02.08
V&V Edition	1
V&V Disposition and Status	OK
V&V Charge Time	3.285218958199

A.2 Comments