

V&V Reference Report

L2 ASCDS Version : 8.4.3

Observation 55544 - L2 Version 2
Chandra X-Ray Center

L2 Processing Date : Feb 7 2012

Contents

1	Front	2
2	OBI	3
2.1	OBI	3
2.1.1	Images	3
2.1.2	Bias	3
2.1.3	Parameters	4
2.1.4	Events	4
2.2	Compared Parameters	5
2.3	Star Slots	6
2.4	FID Slots	6
A	Summary	7
A.1	Status	7
A.2	Comments	7

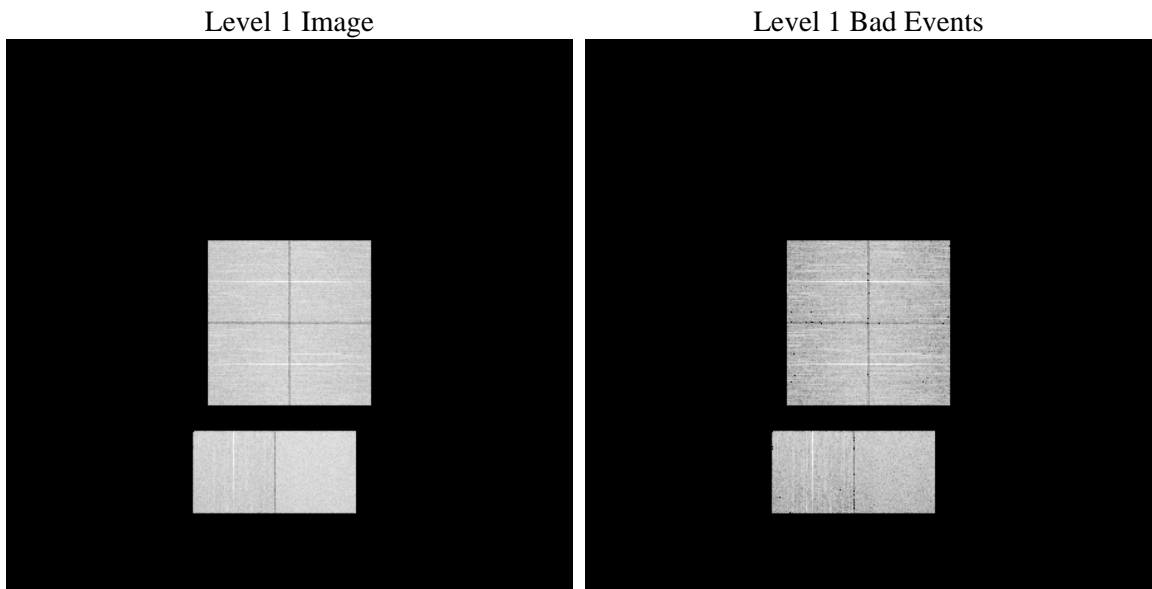
1 Front

seq_num	 	Sequence number
obs_id	55544	Observation id
title	ACIS-012367 diagnostics	Proposal title
observer	CHANDRA engineering request/realtime commanding	Principal investig
object	 	Source name
dtcycle	0	
cycle	P	events from which exps? Prim/Second/Both
ra_targ	0.0	Observer's specified target RA [deg]
dec_targ	0.0	Observer's specified target Dec [deg]
ra_nom	201.14216981361	Nominal RA [deg]
dec_nom	20.747031264855	Nominal Dec [deg]
roll_nom	158.01577301456	Nominal Roll [deg]
revision	2	Processing version of data
ontime	8286.6026190519	Sum of GTIs [s]
livetime	8181.6726670964	Livetime [s]
ontime0	8286.5615790486	Sum of GTIs [s]
ontime1	8286.5205390453	Sum of GTIs [s]
ontime2	8286.479499042	Sum of GTIs [s]
ontime3	8286.6436590552	Sum of GTIs [s]
ontime6	8286.4384590387	Sum of GTIs [s]
ontime7	8286.6026190519	Sum of GTIs [s]
l2events	317197	Number of level 2 events

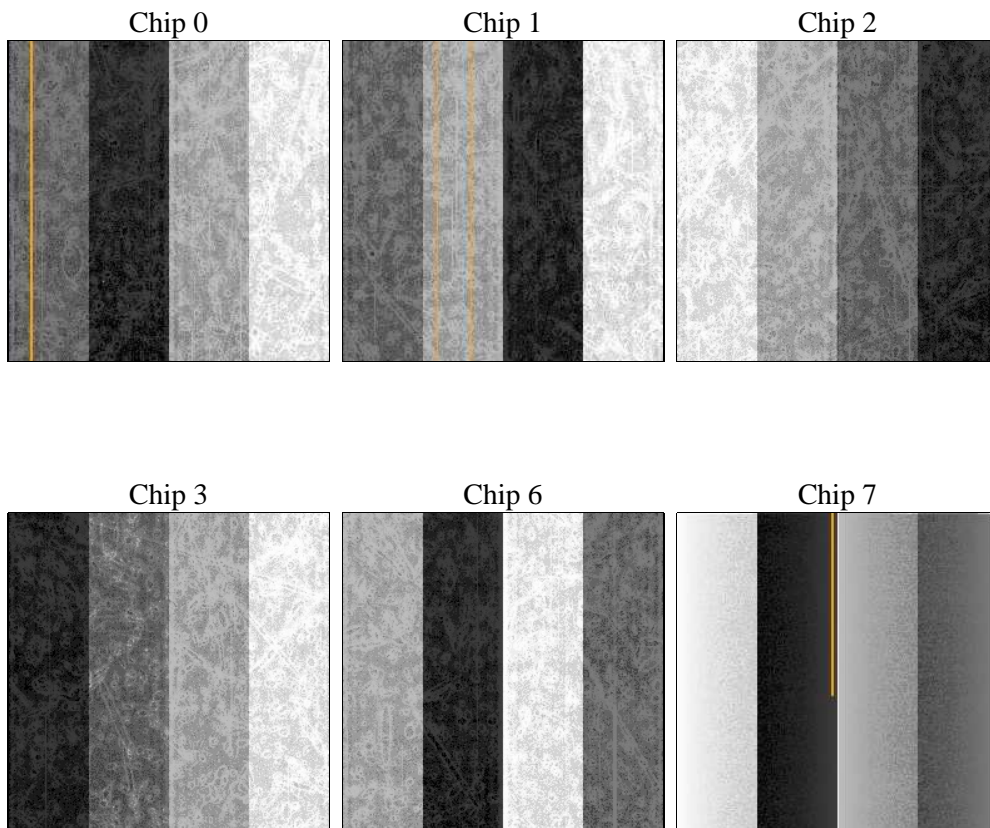
2 OBI

2.1 OBI

2.1.1 Images



2.1.2 Bias



2.1.3 Parameters

obi_num	0	Obi number	sched_exp_time	0.0	[s] Scheduled observation exposure time
ascdsver	8.4.3	Processing system revision	ontime	8286.6026190519	Sum of GTIs [s]
caldsver	4.4.7	 	ontime0	8286.5615790486	Sum of GTIs [s]
date	2012-02-07T14:00:41	Date and time of file creation	ontime1	8286.5205390453	Sum of GTIs [s]
revision	2	Processing version of data	ontime2	8286.479499042	Sum of GTIs [s]
			ontime3	8286.6436590552	Sum of GTIs [s]
			ontime6	8286.4384590387	Sum of GTIs [s]
			ontime7	8286.6026190519	Sum of GTIs [s]
			l1events	674926	Number of level 1 events

2.1.4 Events

	ccd 0	ccd 1	ccd 2	ccd 3	ccd 6	ccd 7		ccd 0	ccd 1	ccd 2	ccd 3	ccd 6	ccd 7
level 1 events	104786	105940	107053	109462	109787	137898	grade 0 events	26628	25831	27241	27778	26273	13166
rejected events	53789	54758	56521	58308	57496	58481		25%	24%	25%	25%	23%	9%
rejected %	51%	51%	52%	53%	52%	42%	grade 1 events	154	136	181	196	135	101
								0%	0%	0%	0%	0%	0%
							grade 2 events	9451	10432	8695	8831	10208	17476
								9%	9%	8%	8%	9%	12%
							grade 3 events	3445	3349	3505	3495	3354	6826
								3%	3%	3%	3%	3%	4%
							grade 4 events	3402	3267	3608	3542	3331	6894
								3%	3%	3%	3%	3%	4%
							grade 5 events	3372	3279	3150	3597	3468	8770
								3%	3%	2%	3%	3%	6%
							grade 6 events	8071	8303	7483	7508	9125	35055
								7%	7%	6%	6%	8%	25%
							grade 7 events	50263	51343	53190	54515	53893	49610
								47%	48%	49%	49%	49%	35%

2.2 Compared Parameters

Parameter	Planned	Actual	Parameter	Planned	Actual
Instrument	ACIS	ACIS	Obspar format version number	7	7
Detector	ACIS-012367	ACIS-012367	Obspar file type	PREDICTED	ACTUAL
Grating	NONE	NONE	Obspar update status	NONE	UPDATED
Data mode	FAINT	FAINT	Number of optional ACIS chips dropped	0	0
Observation mode	SECONDARY	SECONDARY	On-chip summing requested	N	N
[deg] Pointing RA	0	201.142169813606	Subarray requested	NONE	NONE
[deg] Pointing Dec	0	20.74703126485493	Alternating exposures requested	N	N
[deg] Pointing Roll	0.0	158.0157730145639	[s] Primary exposure time	3.2	3.2
[mm] SIM focus pos	-1.429586	-1.428180813131781			
[mm] SIM defocus	0.1037507710433287	0.1051558262725154			
[mm] SIM translation stage pos	250.455976	250.466033080201			
[mm] SIM translation stage offset	0	-0.01005468664627074			
[s] Observation start time (MET)	418124779.818788	418124778.79379			
Observation start date	2011-04-02T09:46:20	2011-04-02T09:46:18			
[s] Observation end time (MET)	418137864.969466	418137863.94447			
Observation end date	2011-04-02T13:24:25	2011-04-02T13:24:23			
Read mode	TIMED	TIMED			

2.3 Star Slots

2.4 FID Slots

A Summary

A.1 Status

V&V Scientist	Jen Lauer
V&V Date (YYYY-MM-DD)	2012.02.09
V&V Edition	1
V&V Disposition and Status	OK
V&V Charge Time	8.2866026190519

A.2 Comments