

V&V Reference Report

L2 ASCDS Version : 8.4.3

Observation 55525 - L2 Version 2
Chandra X-Ray Center

L2 Processing Date : Feb 7 2012

Contents

1	Front	2
2	OBI	3
2.1	OBI	3
2.1.1	Images	3
2.1.2	Bias	3
2.1.3	Parameters	4
2.1.4	Events	4
2.2	Compared Parameters	5
2.3	Star Slots	6
2.4	FID Slots	6
A	Summary	7
A.1	Status	7
A.2	Comments	7

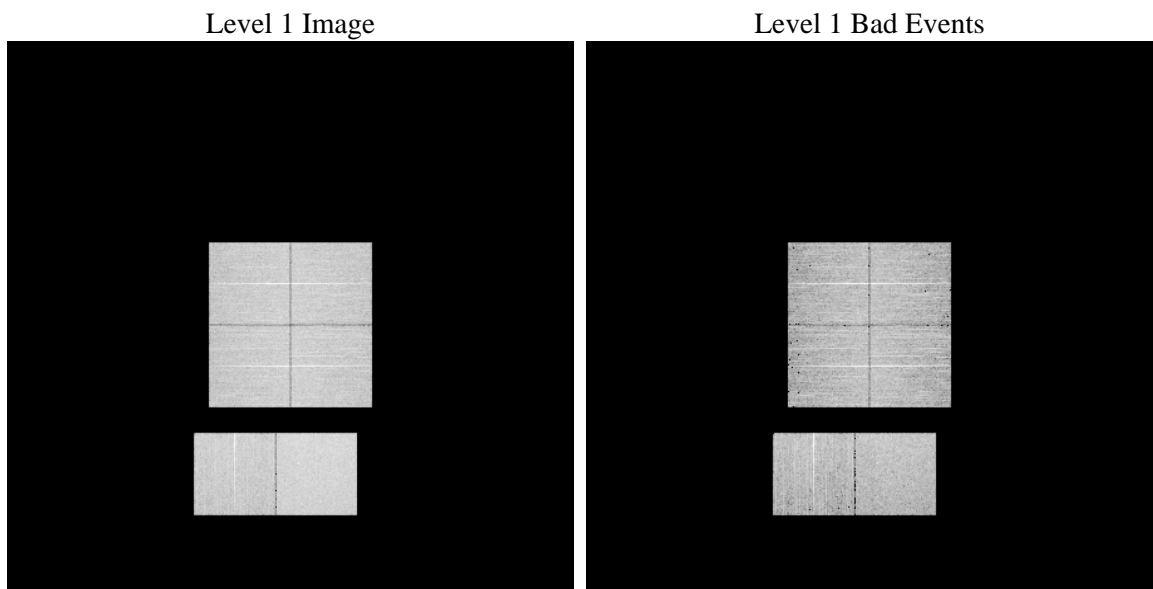
1 Front

seq_num	 	Sequence number
obs_id	55525	Observation id
title	ACIS-012367 diagnostics	Proposal title
observer	CHANDRA engineering request/realtime commanding	Principal investig
object	 	Source name
dtycle	0	
cycle	P	events from which exps? Prim/Second/Both
ra_targ	0.0	Observer's specified target RA [deg]
dec_targ	0.0	Observer's specified target Dec [deg]
ra_nom	200.02956523829	Nominal RA [deg]
dec_nom	-37.983112651889	Nominal Dec [deg]
roll_nom	3.1681742626309	Nominal Roll [deg]
revision	2	Processing version of data
ontime	8284.7999691963	Sum of GTIs [s]
livetime	8179.8928434787	Livetime [s]
ontime0	8284.7999691963	Sum of GTIs [s]
ontime1	8284.7999691963	Sum of GTIs [s]
ontime2	8284.7999691963	Sum of GTIs [s]
ontime3	8284.7999691963	Sum of GTIs [s]
ontime6	8284.7999691963	Sum of GTIs [s]
ontime7	8284.7999691963	Sum of GTIs [s]
l2events	318916	Number of level 2 events

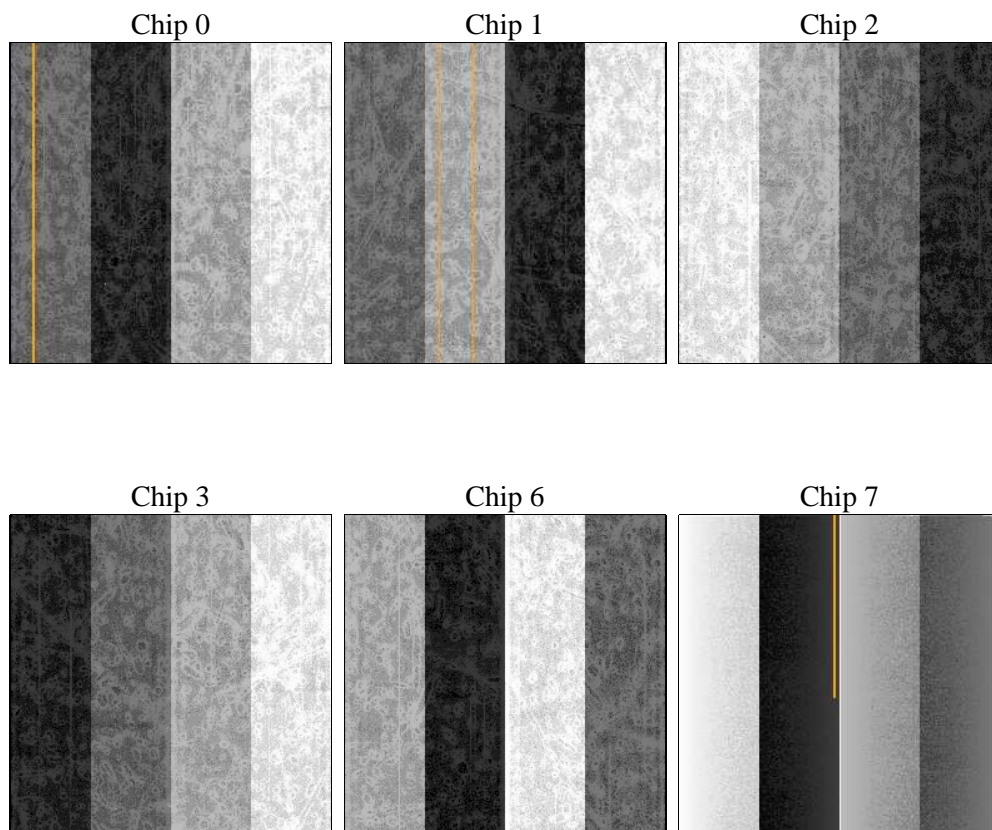
2 OBI

2.1 OBI

2.1.1 Images



2.1.2 Bias



2.1.3 Parameters

obi_num	1	Obi number	sched_exp_time	0.0	[s] Scheduled observation exposure time
ascdsver	8.4.3	Processing system revision	ontime	8284.7999691963	Sum of GTIs [s]
caldsver	4.4.7	 	ontime0	8284.7999691963	Sum of GTIs [s]
date	2012-02-07T17:06:37	Date and time of file creation	ontime1	8284.7999691963	Sum of GTIs [s]
revision	2	Processing version of data	ontime2	8284.7999691963	Sum of GTIs [s]
			ontime3	8284.7999691963	Sum of GTIs [s]
			ontime6	8284.7999691963	Sum of GTIs [s]
			ontime7	8284.7999691963	Sum of GTIs [s]
			l1events	670740	Number of level 1 events

2.1.4 Events

	ccd 0	ccd 1	ccd 2	ccd 3	ccd 6	ccd 7		ccd 0	ccd 1	ccd 2	ccd 3	ccd 6	ccd 7
level 1 events	104939	105098	104831	109048	108853	137971	grade 0 events	27300	26194	27640	27770	26959	13563
rejected events	52978	53897	53990	57731	56222	58127		26%	24%	26%	25%	24%	9%
rejected %	50%	51%	51%	52%	51%	42%	grade 1 events	162	128	191	185	146	123
								0%	0%	0%	0%	0%	0%
							grade 2 events	9670	10098	8800	8863	9829	17347
								9%	9%	8%	8%	9%	12%
							grade 3 events	3493	3425	3486	3619	3458	6960
								3%	3%	3%	3%	3%	5%
							grade 4 events	3416	3324	3488	3537	3421	7022
								3%	3%	3%	3%	3%	5%
							grade 5 events	3366	3388	3099	3502	3555	8890
								3%	3%	2%	3%	3%	6%
							grade 6 events	8082	8160	7427	7546	8964	34984
								7%	7%	7%	6%	8%	25%
							grade 7 events	49450	50381	50700	54026	52521	49082
								47%	47%	48%	49%	48%	35%

2.2 Compared Parameters

Parameter	Planned	Actual	Parameter	Planned	Actual
Instrument	ACIS	ACIS	Obspar format version number	7	7
Detector	ACIS-012367	ACIS-012367	Obspar file type	PREDICTED	ACTUAL
Grating	NONE	NONE	Obspar update status	NONE	UPDATED
Data mode	FAINT	FAINT	Number of optional ACIS chips dropped	0	0
Observation mode	SECONDARY	SECONDARY	On-chip summing requested	N	N
[deg] Pointing RA	0	200.0295652382888	Subarray requested	NONE	NONE
[deg] Pointing Dec	0	-37.98311265188881	Alternating exposures requested	N	N
[deg] Pointing Roll	0.0	3.168174262630928	[s] Primary exposure time	3.2	3.2
[mm] SIM focus pos	-1.429586	-1.428180813131781			
[mm] SIM defocus	0.1037507710433287	0.1051558262725154			
[mm] SIM translation stage pos	250.455976	250.466033080201			
[mm] SIM translation stage offset	0	-0.01005468664627074			
[s] Observation start time (MET)	418813147.304495	418813146.27949			
Observation start date	2011-04-10T08:59:07	2011-04-10T08:59:06			
[s] Observation end time (MET)	418823327.605024	418823326.58002			
Observation end date	2011-04-10T11:48:48	2011-04-10T11:48:46			
Read mode	TIMED	TIMED			

2.3 Star Slots

2.4 FID Slots

A Summary

A.1 Status

V&V Scientist	Jen Lauer
V&V Date (YYYY-MM-DD)	2012.02.09
V&V Edition	1
V&V Disposition and Status	OK
V&V Charge Time	8.2847999691963

A.2 Comments