

V&V Reference Report

L2 ASCDS Version : 8.4.3

Observation 55511 - L2 Version 2
Chandra X-Ray Center

L2 Processing Date : Feb 8 2012

Contents

1	Front	2
2	OBI	3
2.1	OBI	3
2.1.1	Images	3
2.1.2	Bias	3
2.1.3	Parameters	4
2.1.4	Events	4
2.2	Compared Parameters	5
2.3	Star Slots	6
2.4	FID Slots	6
A	Summary	7
A.1	Status	7
A.2	Comments	7

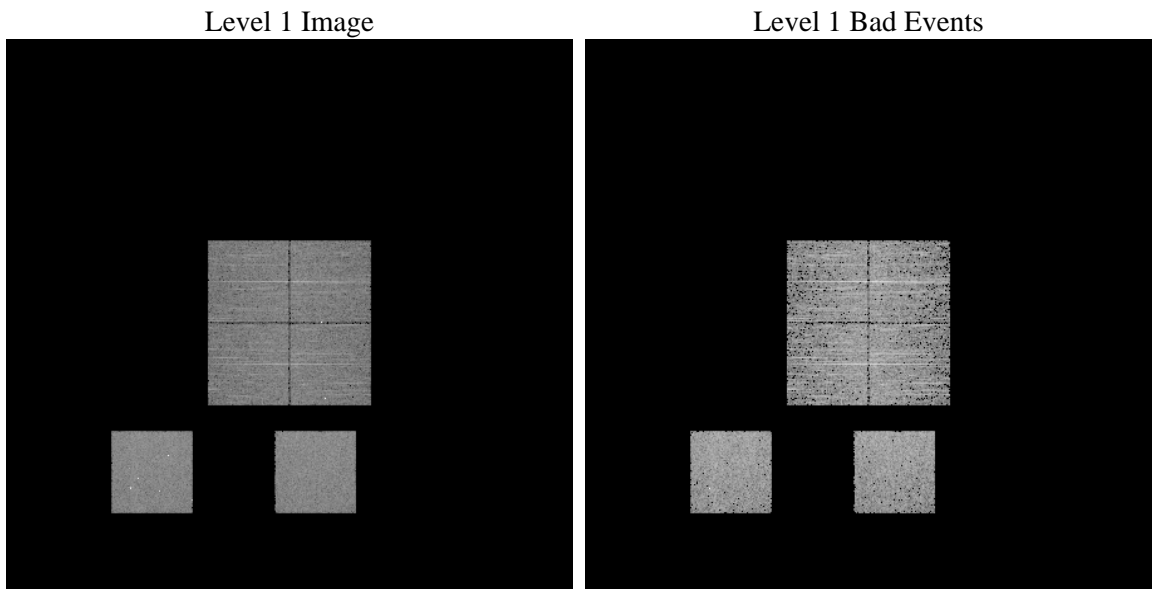
1 Front

seq_num	 	Sequence number
obs_id	55511	Observation id
title	ACIS-012357 diagnostics	Proposal title
observer	CHANDRA engineering request/realtime commanding	Principal investig
object	 	Source name
dtcycle	0	
cycle	P	events from which exps? Prim/Second/Both
ra_targ	0.0	Observer's specified target RA [deg]
dec_targ	0.0	Observer's specified target Dec [deg]
ra_nom	219.47062685193	Nominal RA [deg]
dec_nom	12.199640215611	Nominal Dec [deg]
roll_nom	147.95492518717	Nominal Roll [deg]
revision	2	Processing version of data
ontime	3283.1999878287	Sum of GTIs [s]
livetime	3241.6261326772	Livetime [s]
ontime0	3283.1999878287	Sum of GTIs [s]
ontime1	3283.1999878287	Sum of GTIs [s]
ontime2	3283.1999878287	Sum of GTIs [s]
ontime3	3283.1999878287	Sum of GTIs [s]
ontime5	3283.1999878287	Sum of GTIs [s]
ontime7	3283.1999878287	Sum of GTIs [s]
l2events	137839	Number of level 2 events

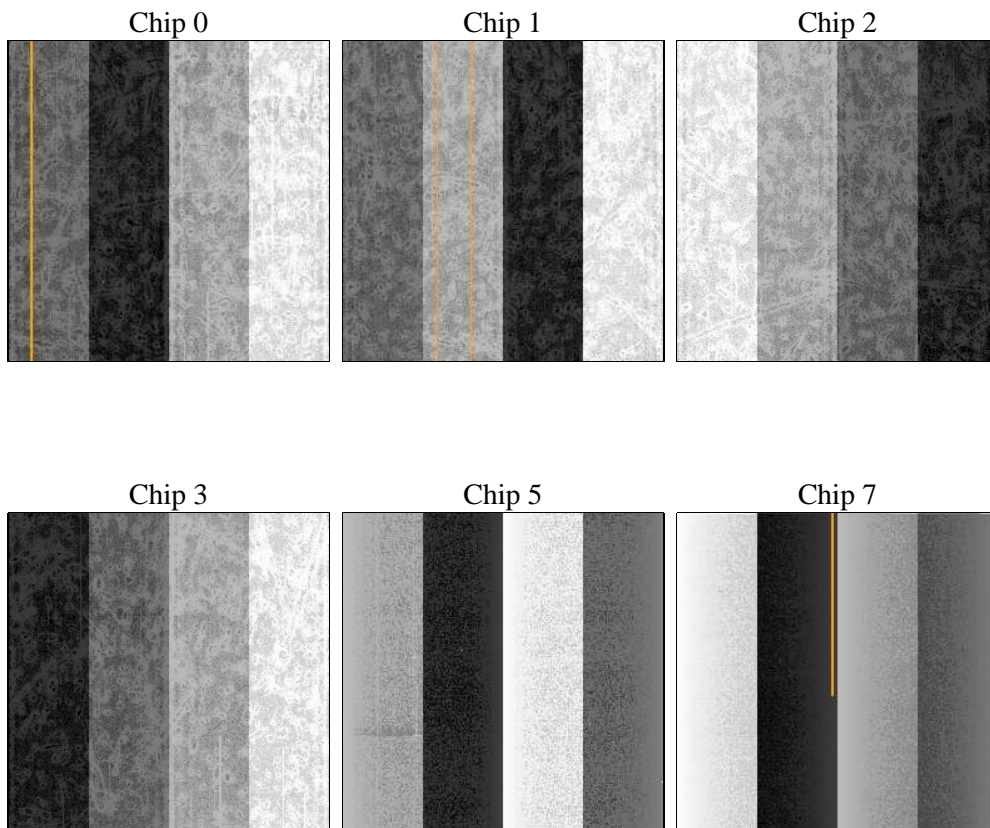
2 OBI

2.1 OBI

2.1.1 Images



2.1.2 Bias



2.1.3 Parameters

obi_num	0	Obi number	sched_exp_time	0.0	[s] Scheduled observation exposure time
ascdsver	8.4.3	Processing system revision	ontime	3283.1999878287	Sum of GTIs [s]
caldsver	4.4.7	 	ontime0	3283.1999878287	Sum of GTIs [s]
date	2012-02-08T07:21:16	Date and time of file creation	ontime1	3283.1999878287	Sum of GTIs [s]
revision	2	Processing version of data	ontime2	3283.1999878287	Sum of GTIs [s]
			ontime3	3283.1999878287	Sum of GTIs [s]
			ontime5	3283.1999878287	Sum of GTIs [s]
			ontime7	3283.1999878287	Sum of GTIs [s]
			l1events	288089	Number of level 1 events

2.1.4 Events

	ccd 0	ccd 1	ccd 2	ccd 3	ccd 5	ccd 7		ccd 0	ccd 1	ccd 2	ccd 3	ccd 5	ccd 7
level 1 events	42160	42934	43303	44413	59189	56090	grade 0 events	10587	11399	10779	11909	5719	5344
rejected events	22062	21582	23161	23356	24591	24308		25%	26%	24%	26%	9%	9%
rejected %	52%	50%	53%	52%	41%	43%	grade 1 events	56	55	72	89	294	59
								0%	0%	0%	0%	0%	0%
							grade 2 events	3721	4032	3518	3526	11960	6938
								8%	9%	8%	7%	20%	12%
							grade 3 events	1376	1304	1417	1415	1202	2839
								3%	3%	3%	3%	2%	5%
							grade 4 events	1293	1309	1453	1349	1170	2799
								3%	3%	3%	3%	1%	4%
							grade 5 events	1389	1337	1331	1540	2946	3627
								3%	3%	3%	3%	4%	6%
							grade 6 events	3141	3325	2985	2883	14589	13892
								7%	7%	6%	6%	24%	24%
							grade 7 events	20597	20173	21748	21702	21309	20592
								48%	46%	50%	48%	36%	36%

2.2 Compared Parameters

Parameter	Planned	Actual	Parameter	Planned	Actual
Instrument	ACIS	ACIS	Obspar format version number	7	7
Detector	ACIS-012357	ACIS-012357	Obspar file type	PREDICTED	ACTUAL
Grating	NONE	NONE	Obspar update status	NONE	UPDATED
Data mode	FAINT	FAINT	Number of optional ACIS chips dropped	0	0
Observation mode	SECONDARY	SECONDARY	On-chip summing requested	N	N
[deg] Pointing RA	0	219.4706268519326	Subarray requested	NONE	NONE
[deg] Pointing Dec	0	12.1996402156112	Alternating exposures requested	N	N
[deg] Pointing Roll	0.0	147.9549251871709	[s] Primary exposure time	3.2	3.2
[mm] SIM focus pos	-1.429586	-1.428180813131781			
[mm] SIM defocus	0.1037507710433287	0.1051558262725154			
[mm] SIM translation stage pos	250.455976	250.466033080201			
[mm] SIM translation stage offset	0	-0.01005468664627074			
[s] Observation start time (MET)	419467427.388424	419467426.36344			
Observation start date	2011-04-17T22:43:47	2011-04-17T22:43:46			
[s] Observation end time (MET)	419472367.88868	419472366.86369			
Observation end date	2011-04-18T00:06:08	2011-04-18T00:06:06			
Read mode	TIMED	TIMED			

2.3 Star Slots

2.4 FID Slots

A Summary

A.1 Status

V&V Scientist	Jen Lauer
V&V Date (YYYY-MM-DD)	2012.02.10
V&V Edition	1
V&V Disposition and Status	OK
V&V Charge Time	3.2831999878287

A.2 Comments