

V&V Reference Report

L2 ASCDS Version : 8.4.3

Observation 55504 - L2 Version 2
Chandra X-Ray Center

L2 Processing Date : Feb 8 2012

Contents

1	Front	2
2	OBI	3
2.1	OBI	3
2.1.1	Images	3
2.1.2	Bias	3
2.1.3	Parameters	4
2.1.4	Events	4
2.2	Compared Parameters	5
2.3	Star Slots	6
2.4	FID Slots	6
A	Summary	7
A.1	Status	7
A.2	Comments	7

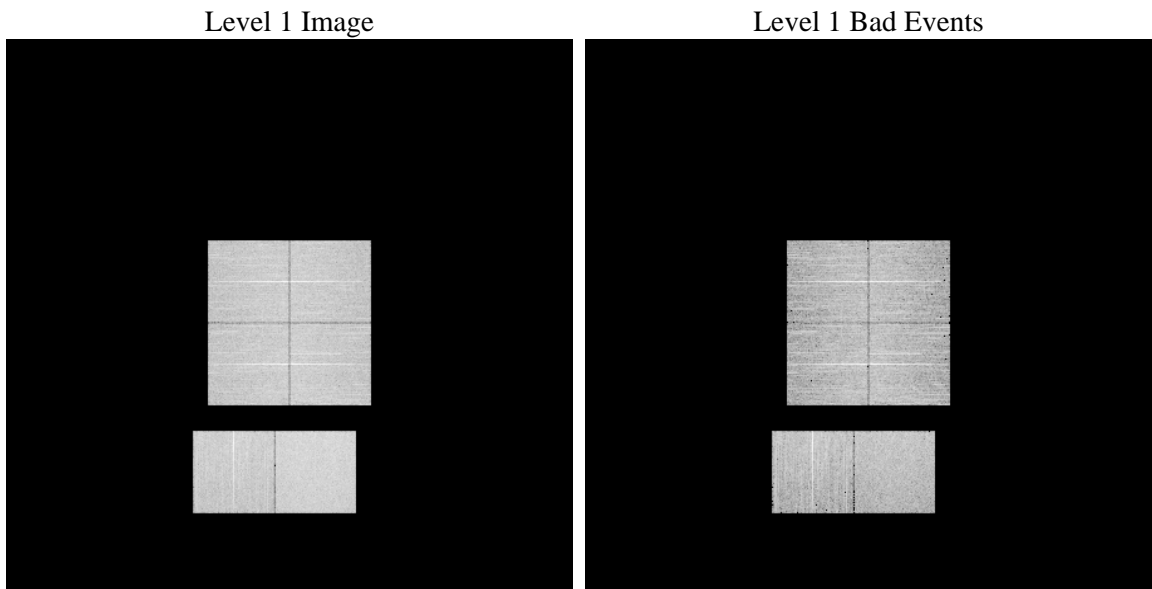
1 Front

seq_num	 	Sequence number
obs_id	55504	Observation id
title	ACIS-012367 diagnostics	Proposal title
observer	CHANDRA engineering request/realtime commanding	Principal investig
object	 	Source name
dtcycle	0	
cycle	P	events from which exps? Prim/Second/Both
ra_targ	0.0	Observer's specified target RA [deg]
dec_targ	0.0	Observer's specified target Dec [deg]
ra_nom	220.36526471316	Nominal RA [deg]
dec_nom	3.6216538713675	Nominal Dec [deg]
roll_nom	137.47139832663	Nominal Roll [deg]
revision	2	Processing version of data
ontime	8226.3048216701	Sum of GTIs [s]
livetime	8122.138396732	Livetime [s]
ontime0	8226.2637816668	Sum of GTIs [s]
ontime1	8226.2227416635	Sum of GTIs [s]
ontime2	8226.1817016602	Sum of GTIs [s]
ontime3	8226.3458616734	Sum of GTIs [s]
ontime6	8226.1406616569	Sum of GTIs [s]
ontime7	8226.3048216701	Sum of GTIs [s]
l2events	316473	Number of level 2 events

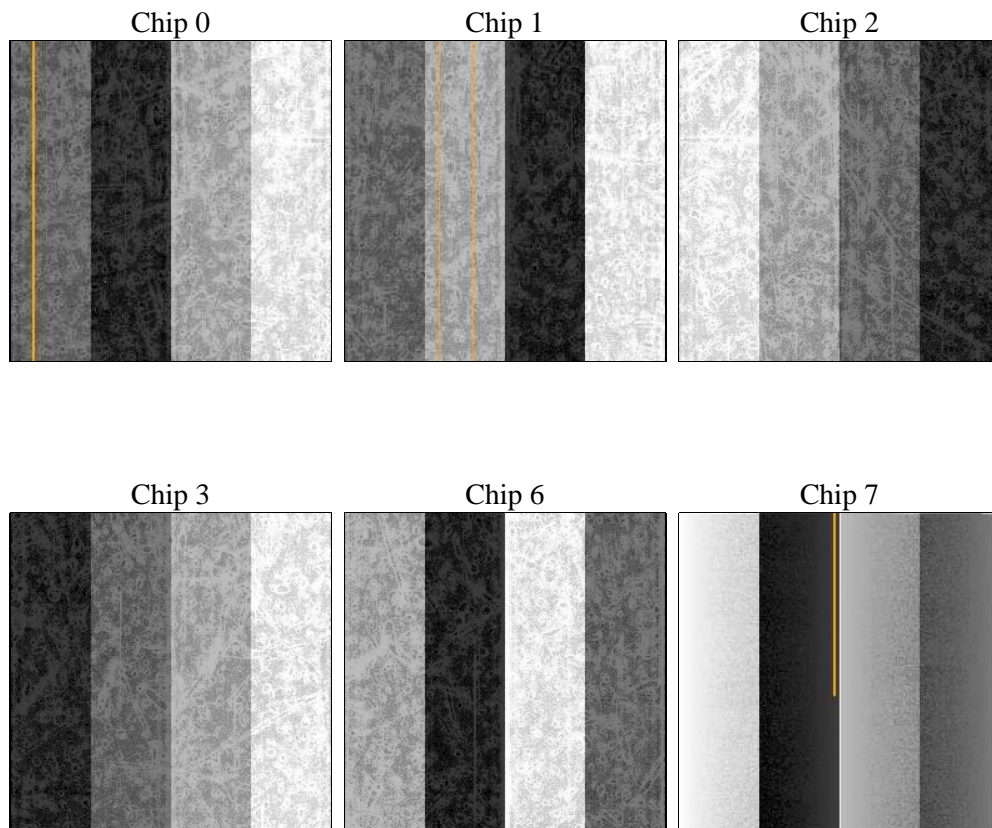
2 OBI

2.1 OBI

2.1.1 Images



2.1.2 Bias



2.1.3 Parameters

obi_num	0	Obi number	sched_exp_time	0.0	[s] Scheduled observation exposure time
ascdsver	8.4.3	Processing system revision	ontime	8226.3048216701	Sum of GTIs [s]
caldsver	4.4.7	 	ontime0	8226.2637816668	Sum of GTIs [s]
date	2012-02-08T07:22:40	Date and time of file creation	ontime1	8226.2227416635	Sum of GTIs [s]
revision	2	Processing version of data	ontime2	8226.1817016602	Sum of GTIs [s]
			ontime3	8226.3458616734	Sum of GTIs [s]
			ontime6	8226.1406616569	Sum of GTIs [s]
			ontime7	8226.3048216701	Sum of GTIs [s]
			l1events	685283	Number of level 1 events

2.1.4 Events

	ccd 0	ccd 1	ccd 2	ccd 3	ccd 6	ccd 7		ccd 0	ccd 1	ccd 2	ccd 3	ccd 6	ccd 7
level 1 events	105606	105090	107444	111682	114483	140978	grade 0 events	26751	25792	27401	28118	26890	13408
rejected events	55169	54558	57352	60540	61876	60831		25%	24%	25%	25%	23%	9%
rejected %	52%	51%	53%	54%	54%	43%	grade 1 events	151	147	176	181	133	118
								0%	0%	0%	0%	0%	0%
							grade 2 events	9454	10056	8632	8895	10254	17690
								8%	9%	8%	7%	8%	12%
							grade 3 events	3533	3321	3565	3428	3362	7214
								3%	3%	3%	3%	2%	5%
							grade 4 events	3369	3313	3444	3449	3308	6893
								3%	3%	3%	3%	2%	4%
							grade 5 events	3456	3423	3312	3743	3594	9125
								3%	3%	3%	3%	3%	6%
							grade 6 events	7693	8407	7441	7587	9154	35520
								7%	7%	6%	6%	7%	25%
							grade 7 events	51199	50631	53473	56281	57788	51010
								48%	48%	49%	50%	50%	36%

2.2 Compared Parameters

Parameter	Planned	Actual
Instrument	ACIS	ACIS
Detector	ACIS-012367	ACIS-012367
Grating	NONE	NONE
Data mode	FAINT	FAINT
Observation mode	SECONDARY	SECONDARY
[deg] Pointing RA	0	220.3652647131582
[deg] Pointing Dec	0	3.621653871367531
[deg] Pointing Roll	0.0	137.4713983266329
[mm] SIM focus pos	-1.4281808131	-1.4281808131
[mm] SIM defocus	0.1051557500557434	0.1051557500557434
[mm] SIM translation stage pos	250.4660330802	250.4660330802
[mm] SIM translation stage offset	-0.01005726120527584	-0.01005726120527584
[s] Observation start time (MET)	419498488.990035	419498488.990035
Observation start date	2011-04-18T07:21:29	2011-04-18T07:21:28
[s] Observation end time (MET)	419508308.365055	419508308.365055
Observation end date	2011-04-18T10:05:08	2011-04-18T10:05:08
Read mode	TIMED	TIMED

Parameter	Planned	Actual
Obspar format version number	7	7
Obspar file type	PREDICTED	ACTUAL
Obspar update status	OVERRIDE	OVERRIDE
Number of optional ACIS chips dropped	0	0
On-chip summing requested	N	N
Subarray requested	NONE	NONE
Alternating exposures requested	N	N
[s] Primary exposure time	3.2	3.2

2.3 Star Slots

2.4 FID Slots

A Summary

A.1 Status

V&V Scientist	Jen Lauer
V&V Date (YYYY-MM-DD)	2012.02.10
V&V Edition	1
V&V Disposition and Status	OK
V&V Charge Time	8.2263048216701

A.2 Comments