

# V&V Reference Report

## L2 ASCDS Version : 8.4.3

Observation 55493 - L2 Version 2  
Chandra X-Ray Center

L2 Processing Date : Feb 8 2012

## Contents

<b>1</b>	<b>Front</b>	<b>2</b>
<b>2</b>	<b>OBI</b>	<b>3</b>
2.1	OBI . . . . .	3
2.1.1	Images . . . . .	3
2.1.2	Bias . . . . .	3
2.1.3	Parameters . . . . .	4
2.1.4	Events . . . . .	4
2.2	Compared Parameters . . . . .	5
2.3	Star Slots . . . . .	6
2.4	FID Slots . . . . .	6
<b>A</b>	<b>Summary</b>	<b>7</b>
A.1	Status . . . . .	7
A.2	Comments . . . . .	7

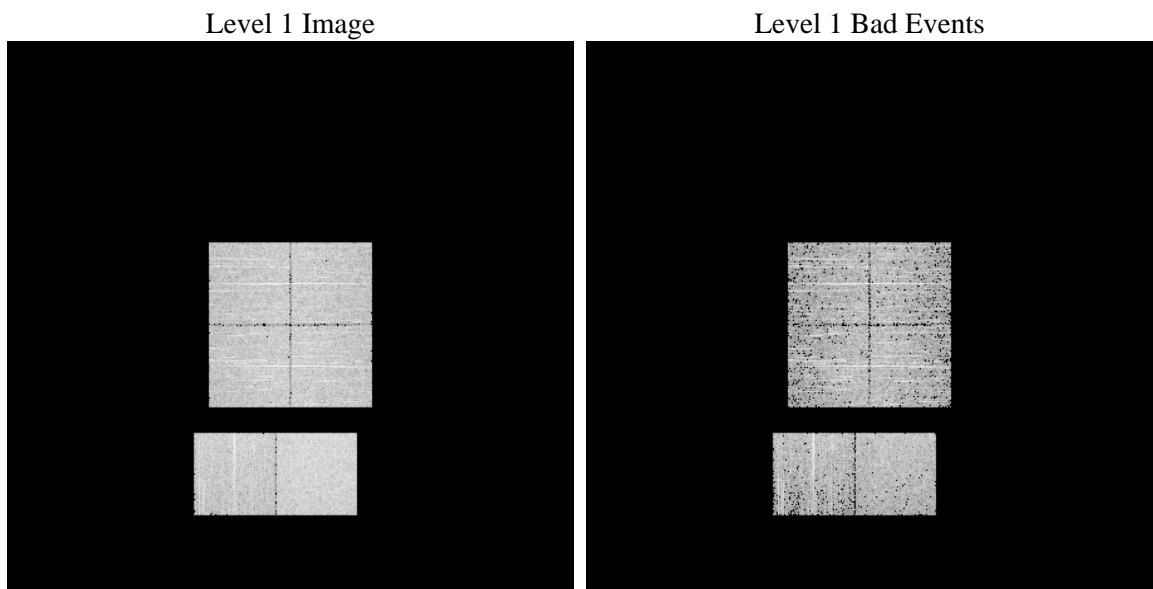
# 1 Front

seq_num	&#160	Sequence number
obs_id	55493	Observation id
title	ACIS-012367 diagnostics	Proposal title
observer	CHANDRA engineering request/realtime commanding	Principal investig
object	&#160	Source name
dtcycle	0	&#160
cycle	P	events from which exps? Prim/Second/Both
ra_targ	0.0	Observer's specified target RA [deg]
dec_targ	0.0	Observer's specified target Dec [deg]
ra_nom	211.93211734479	Nominal RA [deg]
dec_nom	12.322101631723	Nominal Dec [deg]
roll_nom	176.09161772608	Nominal Roll [deg]
revision	2	Processing version of data
ontime	3250.7783885598	Sum of GTIs [s]
livetime	3209.6150752201	Livetime [s]
ontime0	3250.7373485565	Sum of GTIs [s]
ontime1	3250.6963085532	Sum of GTIs [s]
ontime2	3250.6552685499	Sum of GTIs [s]
ontime3	3250.8194285631	Sum of GTIs [s]
ontime6	3250.6142285466	Sum of GTIs [s]
ontime7	3250.7783885598	Sum of GTIs [s]
l2events	125747	Number of level 2 events

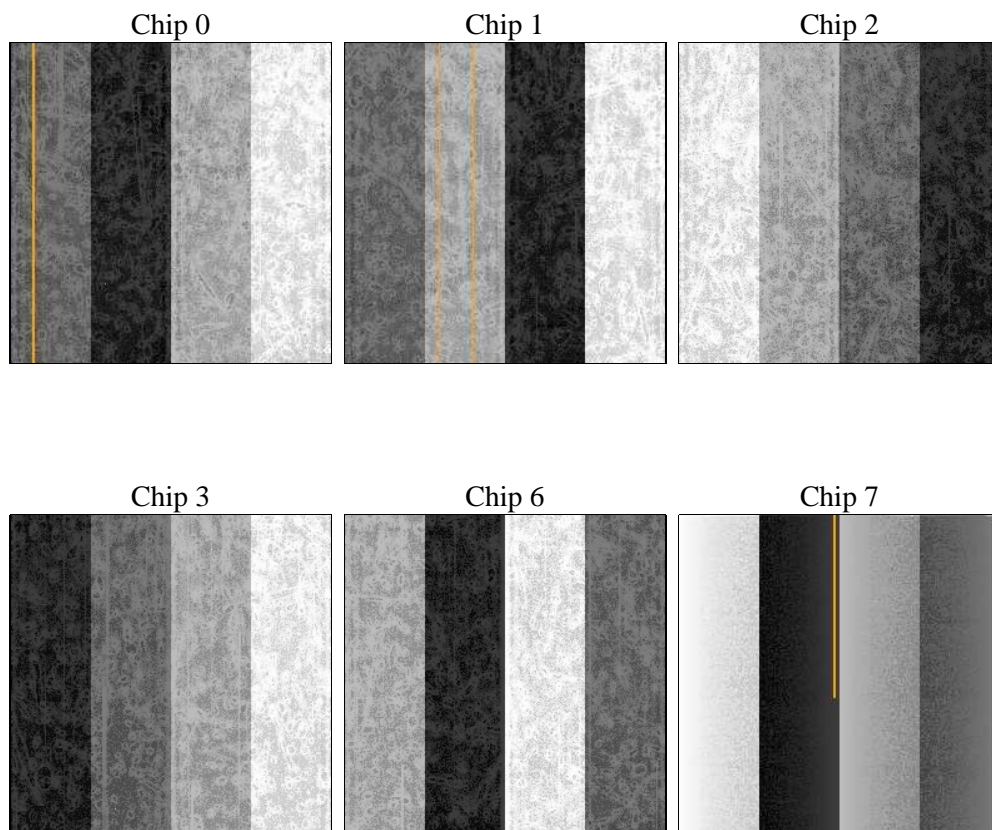
## 2 OBI

### 2.1 OBI

#### 2.1.1 Images



#### 2.1.2 Bias



### 2.1.3 Parameters

obi_num	0	Obi number	sched_exp_time	0.0	[s] Scheduled observation exposure time
ascdsver	8.4.3	Processing system revision	ontime	3250.7783885598	Sum of GTIs [s]
caldsver	4.4.7	&#160	ontime0	3250.7373485565	Sum of GTIs [s]
date	2012-02-08T23:25:53	Date and time of file creation	ontime1	3250.6963085532	Sum of GTIs [s]
revision	2	Processing version of data	ontime2	3250.6552685499	Sum of GTIs [s]
			ontime3	3250.8194285631	Sum of GTIs [s]
			ontime6	3250.6142285466	Sum of GTIs [s]
			ontime7	3250.7783885598	Sum of GTIs [s]
			l1events	268540	Number of level 1 events

### 2.1.4 Events

	ccd 0	ccd 1	ccd 2	ccd 3	ccd 6	ccd 7		ccd 0	ccd 1	ccd 2	ccd 3	ccd 6	ccd 7
level 1 events	40980	41331	42281	43847	43914	56187	grade 0 events	10644	10366	10770	10932	10920	5790
rejected events	20856	21332	22327	23699	23243	24013		25%	25%	25%	24%	24%	10%
rejected %	50%	51%	52%	54%	52%	42%	grade 1 events	67	40	57	65	73	42
								0%	0%	0%	0%	0%	0%
							grade 2 events	3790	3938	3522	3628	3711	6942
								9%	9%	8%	8%	8%	12%
							grade 3 events	1394	1362	1411	1431	1421	3017
								3%	3%	3%	3%	3%	5%
							grade 4 events	1353	1324	1429	1377	1335	2956
								3%	3%	3%	3%	3%	5%
							grade 5 events	1421	1386	1190	1558	1470	3867
								3%	3%	2%	3%	3%	6%
							grade 6 events	3147	3249	3054	2982	3545	13854
								7%	7%	7%	6%	8%	24%
							grade 7 events	19164	19666	20848	21874	21439	19719
								46%	47%	49%	49%	48%	35%

## 2.2 Compared Parameters

Parameter	Planned	Actual
Instrument	ACIS	ACIS
Detector	ACIS-012367	ACIS-012367
Grating	NONE	NONE
Data mode	FAINT	FAINT
Observation mode	SECONDARY	SECONDARY
[deg] Pointing RA	0	211.9321173447869
[deg] Pointing Dec	0	12.32210163172331
[deg] Pointing Roll	0.0	176.0916177260788
[mm] SIM focus pos	-1.4281808131	-1.4281808131
[mm] SIM defocus	0.1051557500557434	0.1051557500557434
[mm] SIM translation stage pos	250.4660330802	250.4660330802
[mm] SIM translation stage offset	-0.01005726120527584	-0.01005726120527584
[s] Observation start time (MET)	419924399.062151	419924399.062151
Observation start date	2011-04-23T05:39:59	2011-04-23T05:39:59
[s] Observation end time (MET)	419928941.899128	419928941.899128
Observation end date	2011-04-23T06:55:42	2011-04-23T06:55:41
Read mode	TIMED	TIMED

Parameter	Planned	Actual
Obspar format version number	7	7
Obspar file type	PREDICTED	ACTUAL
Obspar update status	OVERRIDE	OVERRIDE
Number of optional ACIS chips dropped	0	0
On-chip summing requested	N	N
Subarray requested	NONE	NONE
Alternating exposures requested	N	N
[s] Primary exposure time	3.2	3.2

## **2.3 Star Slots**

## **2.4 FID Slots**

## A Summary

### A.1 Status

V&V Scientist	Beth Sundheim
V&V Date (YYYY-MM-DD)	2012.02.10
V&V Edition	1
V&V Disposition and Status	OK
V&V Charge Time	3.2507783885598

### A.2 Comments