

# V&V Reference Report

## L2 ASCDS Version : 8.4.3

Observation 55451 - L2 Version 2  
Chandra X-Ray Center

L2 Processing Date : Feb 9 2012

## Contents

<b>1</b>	<b>Front</b>	<b>2</b>
<b>2</b>	<b>OBI</b>	<b>3</b>
2.1	OBI . . . . .	3
2.1.1	Images . . . . .	3
2.1.2	Bias . . . . .	3
2.1.3	Parameters . . . . .	4
2.1.4	Events . . . . .	4
2.2	Compared Parameters . . . . .	5
2.3	Star Slots . . . . .	6
2.4	FID Slots . . . . .	6
<b>A</b>	<b>Summary</b>	<b>7</b>
A.1	Status . . . . .	7
A.2	Comments . . . . .	7

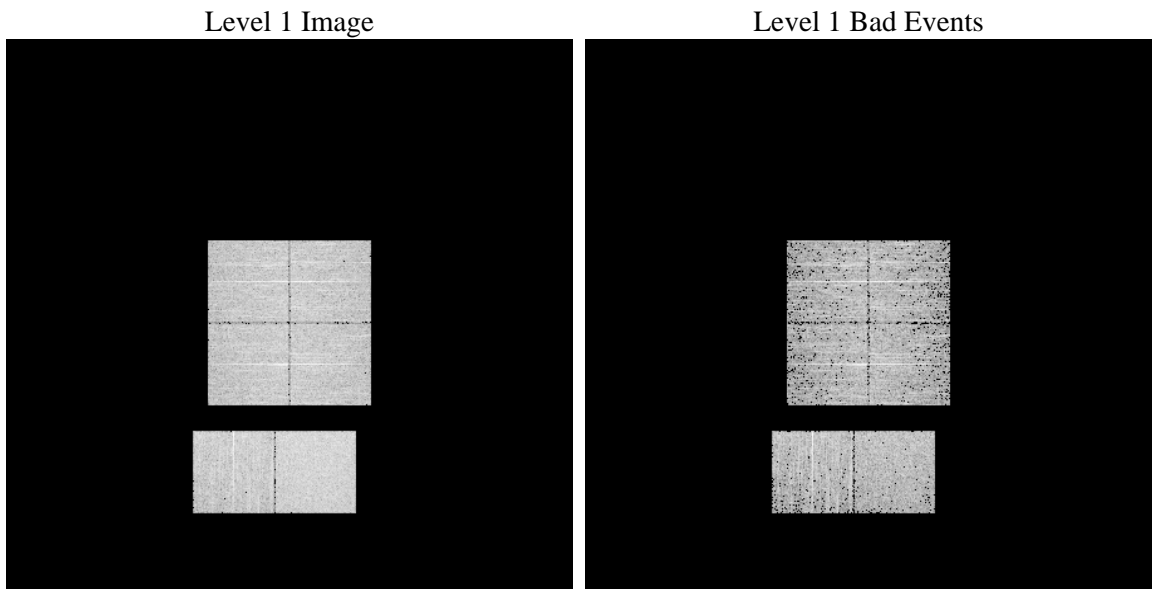
# 1 Front

seq_num	&#160	Sequence number
obs_id	55451	Observation id
title	ACIS-012367 diagnostics	Proposal title
observer	CHANDRA engineering request/realtime commanding	Principal investig
object	&#160	Source name
dtcycle	0	&#160
cycle	P	events from which exps? Prim/Second/Both
ra_targ	0.0	Observer's specified target RA [deg]
dec_targ	0.0	Observer's specified target Dec [deg]
ra_nom	209.00966338086	Nominal RA [deg]
dec_nom	12.94352086829	Nominal Dec [deg]
roll_nom	208.80340441807	Nominal Roll [deg]
revision	2	Processing version of data
ontime	3288.3948312998	Sum of GTIs [s]
livetime	3246.7551959122	Livetime [s]
ontime0	3288.3537912965	Sum of GTIs [s]
ontime1	3288.3127512932	Sum of GTIs [s]
ontime2	3288.2717112899	Sum of GTIs [s]
ontime3	3288.4358713031	Sum of GTIs [s]
ontime6	3288.2306712866	Sum of GTIs [s]
ontime7	3288.3948312998	Sum of GTIs [s]
l2events	126463	Number of level 2 events

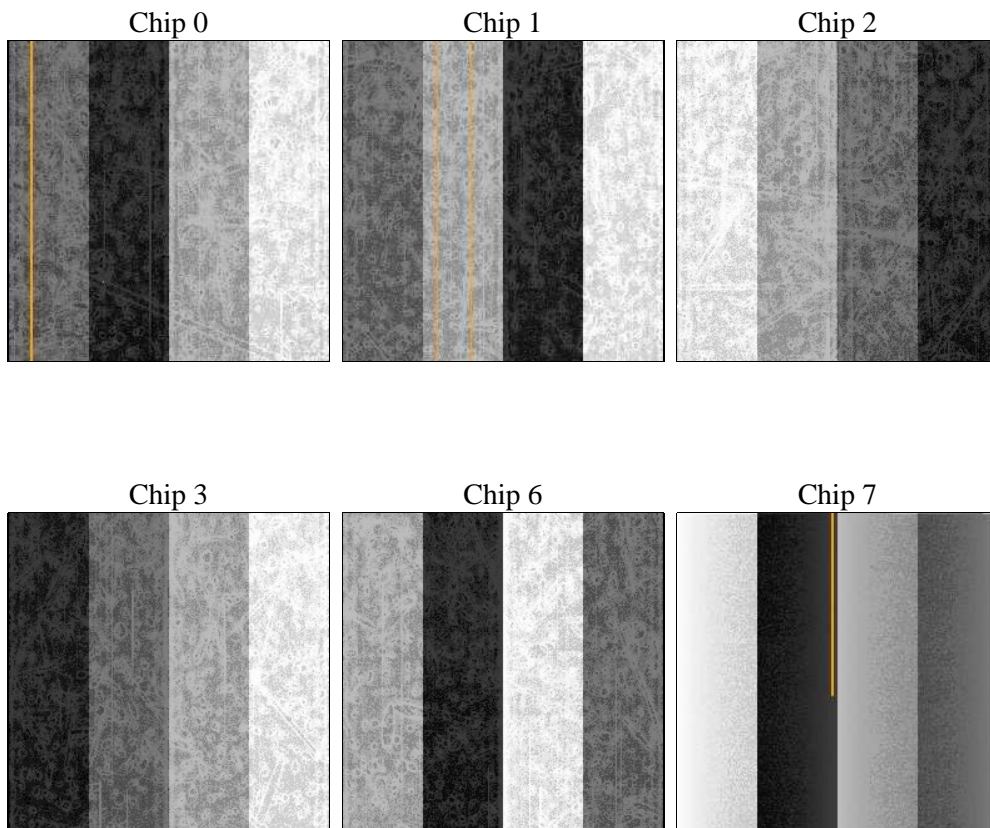
## 2 OBI

### 2.1 OBI

#### 2.1.1 Images



#### 2.1.2 Bias



### 2.1.3 Parameters

obi_num	0	Obi number	sched_exp_time	0.0	[s] Scheduled observation exposure time
ascdsver	8.4.3	Processing system revision	ontime	3288.3948312998	Sum of GTIs [s]
caldbver	4.4.7	&#160	ontime0	3288.3537912965	Sum of GTIs [s]
date	2012-02-09T16:54:53	Date and time of file creation	ontime1	3288.3127512932	Sum of GTIs [s]
revision	2	Processing version of data	ontime2	3288.2717112899	Sum of GTIs [s]
			ontime3	3288.4358713031	Sum of GTIs [s]
			ontime6	3288.2306712866	Sum of GTIs [s]
			ontime7	3288.3948312998	Sum of GTIs [s]
			l1events	270431	Number of level 1 events

### 2.1.4 Events

	ccd 0	ccd 1	ccd 2	ccd 3	ccd 6	ccd 7		ccd 0	ccd 1	ccd 2	ccd 3	ccd 6	ccd 7
level 1 events	42002	42145	41535	42662	45965	56122	grade 0 events	10647	10434	10903	10767	10779	5720
rejected events	21815	21863	21444	22675	25158	23603		25%	24%	26%	25%	23%	10%
rejected %	51%	51%	51%	53%	54%	42%	grade 1 events	73	50	92	65	51	40
								0%	0%	0%	0%	0%	0%
							grade 2 events	3728	3935	3580	3465	3800	7015
								8%	9%	8%	8%	8%	12%
							grade 3 events	1378	1338	1357	1450	1386	2942
								3%	3%	3%	3%	3%	5%
							grade 4 events	1337	1419	1366	1383	1386	3002
								3%	3%	3%	3%	3%	5%
							grade 5 events	1372	1430	1274	1549	1564	3683
								3%	3%	3%	3%	3%	6%
							grade 6 events	3097	3156	2885	2922	3456	13840
								7%	7%	6%	6%	7%	24%
							grade 7 events	20370	20383	20078	21061	23543	19880
								48%	48%	48%	49%	51%	35%

## 2.2 Compared Parameters

Parameter	Planned	Actual	Parameter	Planned	Actual
Instrument	ACIS	ACIS	Obspar format version number	7	7
Detector	ACIS-012367	ACIS-012367	Obspar file type	PREDICTED	ACTUAL
Grating	NONE	NONE	Obspar update status	NONE	UPDATED
Data mode	FAINT	FAINT	Number of optional ACIS chips dropped	0	0
Observation mode	SECONDARY	SECONDARY	On-chip summing requested	N	N
[deg] Pointing RA	0	209.0096633808636	Subarray requested	NONE	NONE
[deg] Pointing Dec	0	12.94352086829008	Alternating exposures requested	N	N
[deg] Pointing Roll	0.0	208.8034044180654	[s] Primary exposure time	3.2	3.2
[mm] SIM focus pos	-1.429586	-1.428180813131781			
[mm] SIM defocus	0.1037507710433287	0.1051558262725154			
[mm] SIM translation stage pos	250.455976	250.466033080201			
[mm] SIM translation stage offset	0	-0.01005468664627074			
[s] Observation start time (MET)	421295258.733352	421295257.70834			
Observation start date	2011-05-09T02:27:39	2011-05-09T02:27:37			
[s] Observation end time (MET)	421300088.533603	421300087.50859			
Observation end date	2011-05-09T03:48:09	2011-05-09T03:48:07			
Read mode	TIMED	TIMED			

## **2.3 Star Slots**

## **2.4 FID Slots**

## A Summary

### A.1 Status

V&V Scientist	Beth Sundheim
V&V Date (YYYY-MM-DD)	2012.02.12
V&V Edition	1
V&V Disposition and Status	OK
V&V Charge Time	3.2883948312998

### A.2 Comments