

V&V Reference Report

L2 ASCDS Version : 8.4.3.1

Observation 55435 - L2 Version 3
Chandra X-Ray Center

L2 Processing Date : Mar 9 2012

Contents

1	Front	2
2	OBI	3
2.1	OBI	3
2.1.1	Images	3
2.1.2	Bias	3
2.1.3	Parameters	4
2.1.4	Events	4
2.2	Compared Parameters	5
2.3	Star Slots	6
2.4	FID Slots	6
A	Summary	7
A.1	Status	7
A.2	Comments	7

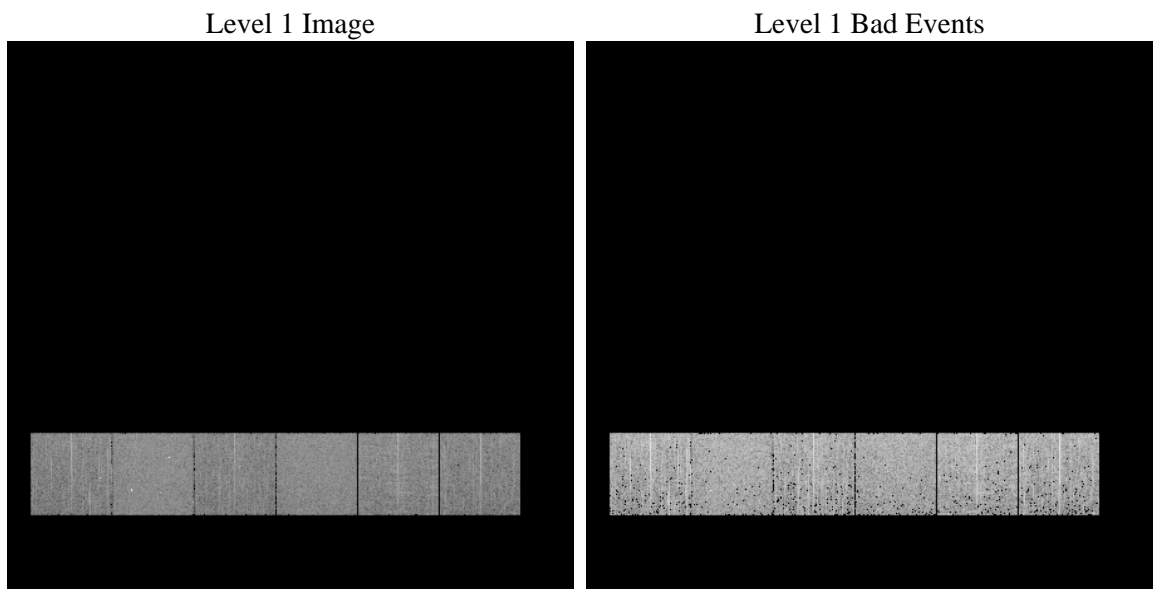
1 Front

seq_num	 	Sequence number
obs_id	55435	Observation id
title	ACIS-456789 diagnostics	Proposal title
observer	CHANDRA engineering request/realtime commanding	Principal investig
object	 	Source name
dtcycle	0	
cycle	P	events from which exps? Prim/Second/Both
ra_targ	0.0	Observer's specified target RA [deg]
dec_targ	0.0	Observer's specified target Dec [deg]
ra_nom	268.99755447377	Nominal RA [deg]
dec_nom	-47.96813575791	Nominal Dec [deg]
roll_nom	59.996960049325	Nominal Roll [deg]
revision	3	Processing version of data
ontime	3279.1594840288	Sum of GTIs [s]
livetime	3237.6367921693	Livetime [s]
ontime4	3279.2826040983	Sum of GTIs [s]
ontime5	3279.2005240321	Sum of GTIs [s]
ontime6	3279.2415640354	Sum of GTIs [s]
ontime7	3279.1594840288	Sum of GTIs [s]
ontime8	3279.9999878407	Sum of GTIs [s]
ontime9	3279.1184440851	Sum of GTIs [s]
l2events	137797	Number of level 2 events

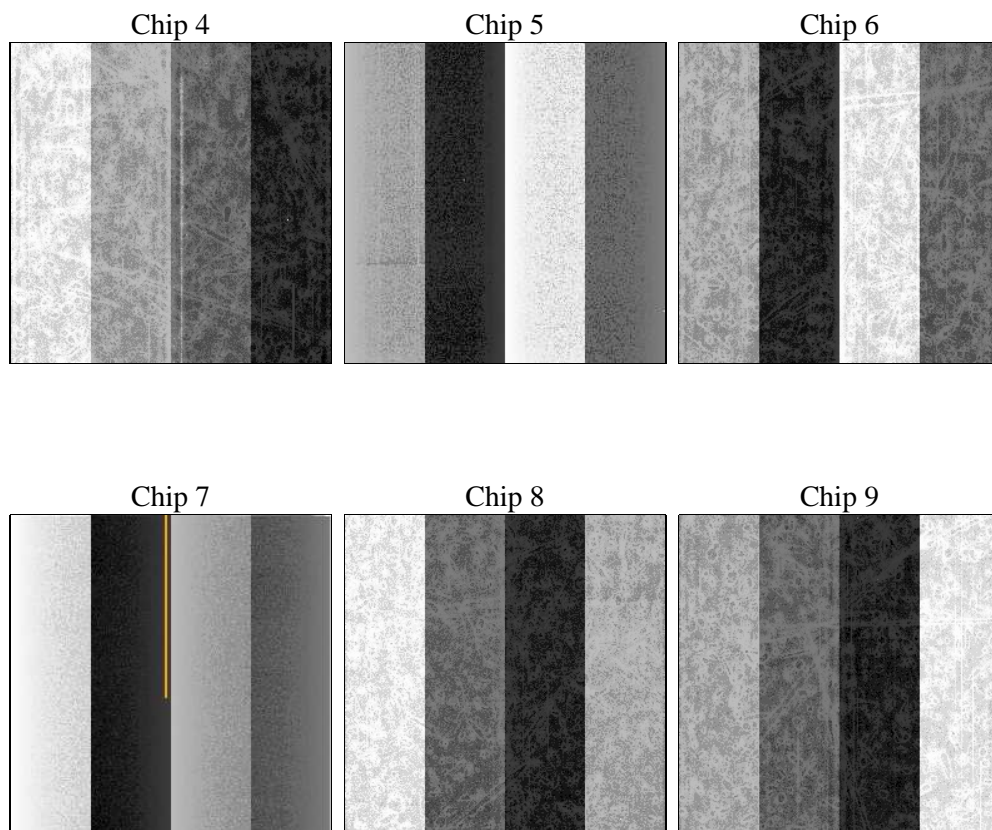
2 OBI

2.1 OBI

2.1.1 Images



2.1.2 Bias



2.1.3 Parameters

obi_num	0	Obi number	sched_exp_time	0.0	[s] Scheduled observation exposure time
ascdsver	8.4.3.1	Processing system revision	ontime	3279.1594840288	Sum of GTIs [s]
caldsver	4.4.8	 	ontime4	3279.2826040983	Sum of GTIs [s]
date	2012-03-09T20:59:04	Date and time of file creation	ontime5	3279.2005240321	Sum of GTIs [s]
revision	3	Processing version of data	ontime6	3279.2415640354	Sum of GTIs [s]
			ontime7	3279.1594840288	Sum of GTIs [s]
			ontime8	3279.9999878407	Sum of GTIs [s]
			ontime9	3279.1184440851	Sum of GTIs [s]
			l1events	306584	Number of level 1 events

2.1.4 Events

	ccd 4	ccd 5	ccd 6	ccd 7	ccd 8	ccd 9		ccd 4	ccd 5	ccd 6	ccd 7	ccd 8	ccd 9
level 1 events	47598	59545	45606	55544	52949	45342	grade 0 events	11787	4766	10677	5353	11896	10318
rejected events	27298	25220	24891	23519	27843	25752		24%	8%	23%	9%	22%	22%
rejected %	57%	42%	54%	42%	52%	56%	grade 1 events	97	187	53	44	63	70
								0%	0%	0%	0%	0%	0%
							grade 2 events	3046	12474	3776	6989	4967	3466
								6%	20%	8%	12%	9%	7%
							grade 3 events	1443	1286	1334	2844	1770	1313
								3%	2%	2%	5%	3%	2%
							grade 4 events	1398	1252	1339	2775	1790	1353
								2%	2%	2%	4%	3%	2%
							grade 5 events	1486	3176	1486	3624	1990	1639
								3%	5%	3%	6%	3%	3%
							grade 6 events	2626	14547	3589	14064	4703	3140
								5%	24%	7%	25%	8%	6%
							grade 7 events	25715	21857	23352	19851	25770	24043
								54%	36%	51%	35%	48%	53%

2.2 Compared Parameters

Parameter	Planned	Actual	Parameter	Planned	Actual
Instrument	ACIS	ACIS	Obspar format version number	7	7
Detector	ACIS-456789	ACIS-456789	Obspar file type	PREDICTED	ACTUAL
Grating	NONE	NONE	Obspar update status	NONE	UPDATED
Data mode	FAINT	FAINT	Number of optional ACIS chips dropped	0	0
Observation mode	SECONDARY	SECONDARY	On-chip summing requested	N	N
[deg] Pointing RA	0	268.9975544737651	Subarray requested	NONE	NONE
[deg] Pointing Dec	0	-47.9681357579097	Alternating exposures requested	N	N
[deg] Pointing Roll	0.0	59.99696004932458	[s] Primary exposure time	3.2	3.2
[mm] SIM focus pos	-1.429586	-1.428180813131781			
[mm] SIM defocus	0.1037507710433287	0.1051558262725154			
[mm] SIM translation stage pos	250.455976	250.466033080201			
[mm] SIM translation stage offset	0	-0.01005468664627074			
[s] Observation start time (MET)	421752074.607059	421752073.58206			
Observation start date	2011-05-14T09:21:15	2011-05-14T09:21:13			
[s] Observation end time (MET)	421759710.857455	421759709.83246			
Observation end date	2011-05-14T11:28:31	2011-05-14T11:28:29			
Read mode	TIMED	TIMED			

2.3 Star Slots

2.4 FID Slots

A Summary

A.1 Status

V&V Scientist	Jen Lauer
V&V Date (YYYY-MM-DD)	2012.03.12
V&V Edition	1
V&V Disposition and Status	OK
V&V Charge Time	3.2791594840288

A.2 Comments

A spatial region of the original bias map for CCD = 6 suffered from anomalously high data values. Pixels in the event data that were bias-corrected by one of the original affected bias pixels may have an apparent energy shift. While the change in energy is expected to be small (~ 20 eV), it depends on many parameters that have not yet been fully explored for this bias anomaly. The bias map for CCD = 6 has been reconstructed for this processing to remove this anomaly using scaled data from a comparable bias map from another observation. The pixels affected by the anomaly are bounded by chip coordinates:
(164,1),(195,1),(195,1024),(164,1024)