

V&V Reference Report

L2 ASCDS Version : 8.4.3

Observation 55419 - L2 Version 2
Chandra X-Ray Center

L2 Processing Date : Feb 10 2012

Contents

1	Front	2
2	OBI	3
2.1	OBI	3
2.1.1	Images	3
2.1.2	Bias	3
2.1.3	Parameters	4
2.1.4	Events	4
2.2	Compared Parameters	5
2.3	Star Slots	6
2.4	FID Slots	6
A	Summary	7
A.1	Status	7
A.2	Comments	7

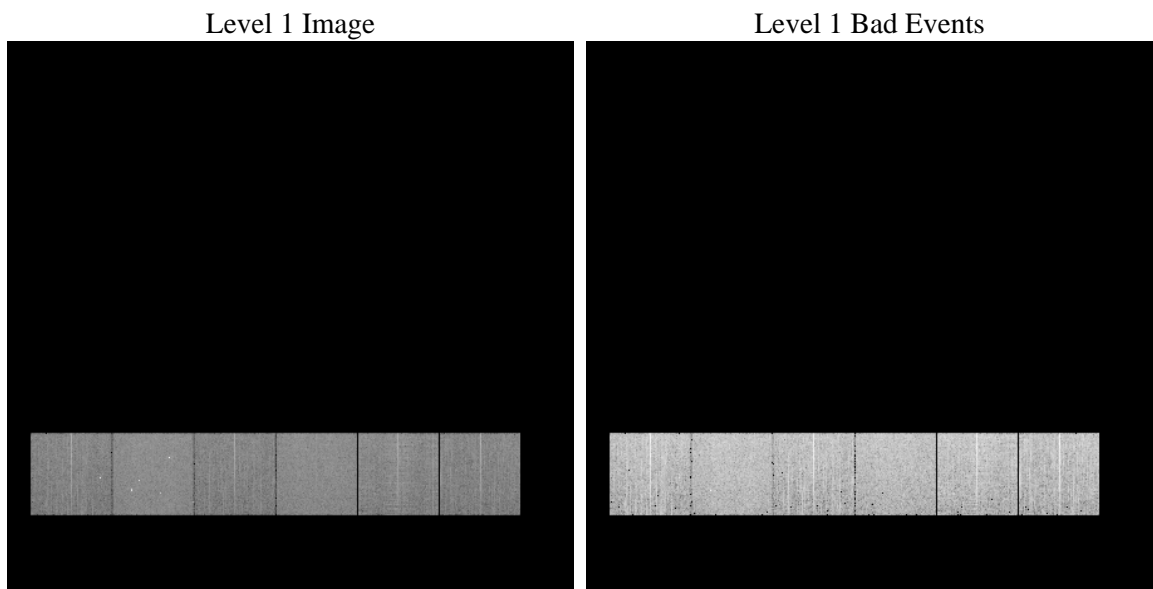
1 Front

seq_num	 	Sequence number
obs_id	55419	Observation id
title	ACIS-456789 diagnostics	Proposal title
observer	CHANDRA engineering request/realtime commanding	Principal investig
object	 	Source name
dtcycle	0	
cycle	P	events from which exps? Prim/Second/Both
ra_targ	0.0	Observer's specified target RA [deg]
dec_targ	0.0	Observer's specified target Dec [deg]
ra_nom	251.97131968452	Nominal RA [deg]
dec_nom	1.9985721628209	Nominal Dec [deg]
roll_nom	150.06960002638	Nominal Roll [deg]
revision	2	Processing version of data
ontime	6111.4662515521	Sum of GTIs [s]
livetime	6034.0791859918	Livetime [s]
ontime4	6111.3431315422	Sum of GTIs [s]
ontime5	6111.4252115488	Sum of GTIs [s]
ontime6	6111.3841715455	Sum of GTIs [s]
ontime7	6111.4662515521	Sum of GTIs [s]
ontime8	6111.3020915389	Sum of GTIs [s]
ontime9	6109.3757475615	Sum of GTIs [s]
l2events	254212	Number of level 2 events

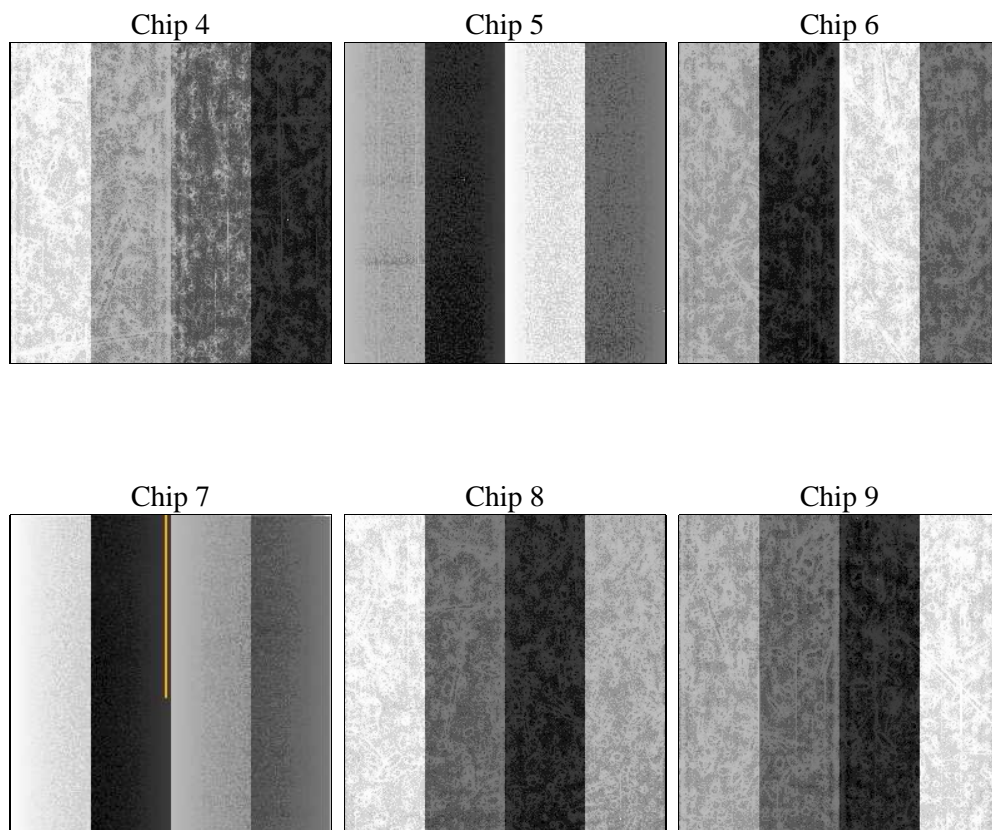
2 OBI

2.1 OBI

2.1.1 Images



2.1.2 Bias



2.1.3 Parameters

obi_num	0	Obi number	sched_exp_time	0.0	[s] Scheduled observation exposure time
ascdsver	8.4.3	Processing system revision	ontime	6111.4662515521	Sum of GTIs [s]
caldsver	4.4.7	 	ontime4	6111.3431315422	Sum of GTIs [s]
date	2012-02-11T00:40:34	Date and time of file creation	ontime5	6111.4252115488	Sum of GTIs [s]
revision	2	Processing version of data	ontime6	6111.3841715455	Sum of GTIs [s]
			ontime7	6111.4662515521	Sum of GTIs [s]
			ontime8	6111.3020915389	Sum of GTIs [s]
			ontime9	6109.3757475615	Sum of GTIs [s]
			l1events	562265	Number of level 1 events

2.1.4 Events

	ccd 4	ccd 5	ccd 6	ccd 7	ccd 8	ccd 9		ccd 4	ccd 5	ccd 6	ccd 7	ccd 8	ccd 9
level 1 events	83706	110264	82866	103874	96841	84714	grade 0 events	21550	9682	19621	9826	22447	19472
rejected events	46631	46759	44822	44695	49820	47783		25%	8%	23%	9%	23%	22%
rejected %	55%	42%	54%	43%	51%	56%	grade 1 events	164	201	108	80	141	133
								0%	0%	0%	0%	0%	0%
							grade 2 events	5582	22141	6954	12858	9107	6382
								6%	20%	8%	12%	9%	7%
							grade 3 events	2532	2349	2458	5288	3429	2626
								3%	2%	2%	5%	3%	3%
							grade 4 events	2598	2362	2519	5219	3391	2481
								3%	2%	3%	5%	3%	2%
							grade 5 events	2820	5624	2733	6891	3692	3076
								3%	5%	3%	6%	3%	3%
							grade 6 events	4813	26971	6492	25988	8647	5970
								5%	24%	7%	25%	8%	7%
							grade 7 events	43647	40934	41981	37724	45987	44574
								52%	37%	50%	36%	47%	52%

2.2 Compared Parameters

Parameter	Planned	Actual	Parameter	Planned	Actual
Instrument	ACIS	ACIS	Obspar format version number	7	7
Detector	ACIS-456789	ACIS-456789	Obspar file type	PREDICTED	ACTUAL
Grating	NONE	NONE	Obspar update status	NONE	UPDATED
Data mode	FAINT	FAINT	Number of optional ACIS chips dropped	0	0
Observation mode	SECONDARY	SECONDARY	On-chip summing requested	N	N
[deg] Pointing RA	0	251.9713196845174	Subarray requested	NONE	NONE
[deg] Pointing Dec	0	1.998572162820933	Alternating exposures requested	N	N
[deg] Pointing Roll	0.0	150.0696000263759	[s] Primary exposure time	3.2	3.2
[mm] SIM focus pos	-1.429586	-1.428180813131781			
[mm] SIM defocus	0.1037507710433287	0.1051558262725154			
[mm] SIM translation stage pos	250.455976	250.466033080201			
[mm] SIM translation stage offset	0	-0.01005468664627074			
[s] Observation start time (MET)	422434777.942533	422434776.91753			
Observation start date	2011-05-22T06:59:38	2011-05-22T06:59:36			
[s] Observation end time (MET)	422442666.342943	422442665.31793			
Observation end date	2011-05-22T09:11:06	2011-05-22T09:11:05			
Read mode	TIMED	TIMED			

2.3 Star Slots

2.4 FID Slots

A Summary

A.1 Status

V&V Scientist	Beth Sundheim
V&V Date (YYYY-MM-DD)	2012.02.13
V&V Edition	1
V&V Disposition and Status	OK
V&V Charge Time	6.1114662515521

A.2 Comments