

V&V Reference Report

L2 ASCDS Version : 8.4.3

Observation 55325 - L2 Version 2
Chandra X-Ray Center

L2 Processing Date : Feb 13 2012

Contents

1	Front	2
2	OBI	3
2.1	OBI	3
2.1.1	Images	3
2.1.2	Bias	3
2.1.3	Parameters	4
2.1.4	Events	4
2.2	Compared Parameters	5
2.3	Star Slots	6
2.4	FID Slots	6
A	Summary	7
A.1	Status	7
A.2	Comments	7

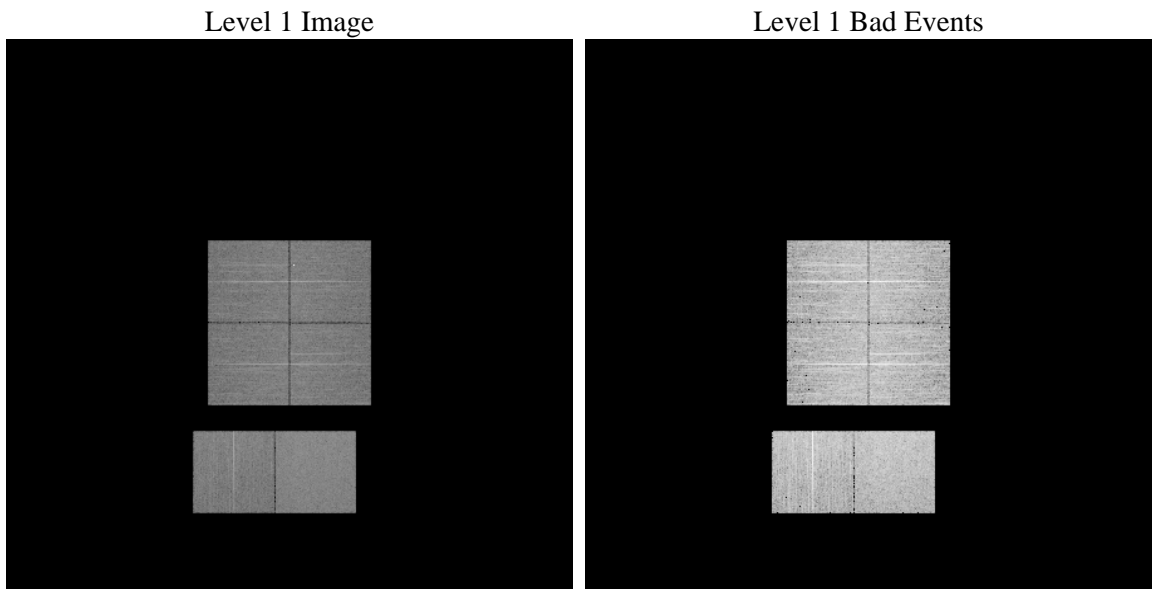
1 Front

seq_num	 	Sequence number
obs_id	55325	Observation id
title	ACIS-012367 diagnostics	Proposal title
observer	CHANDRA engineering request/realtime commanding	Principal investig
object	 	Source name
dtycle	0	
cycle	P	events from which exps? Prim/Second/Both
ra_targ	0.0	Observer's specified target RA [deg]
dec_targ	0.0	Observer's specified target Dec [deg]
ra_nom	312.99726456007	Nominal RA [deg]
dec_nom	-52.971336290023	Nominal Dec [deg]
roll_nom	60.380921320691	Nominal Roll [deg]
revision	2	Processing version of data
ontime	8287.6566488743	Sum of GTIs [s]
livetime	8182.7133501585	Livetime [s]
ontime0	8287.615608871	Sum of GTIs [s]
ontime1	8287.5745688677	Sum of GTIs [s]
ontime2	8287.5335288644	Sum of GTIs [s]
ontime3	8287.6976888776	Sum of GTIs [s]
ontime6	8287.4924888611	Sum of GTIs [s]
ontime7	8287.6566488743	Sum of GTIs [s]
l2events	302084	Number of level 2 events

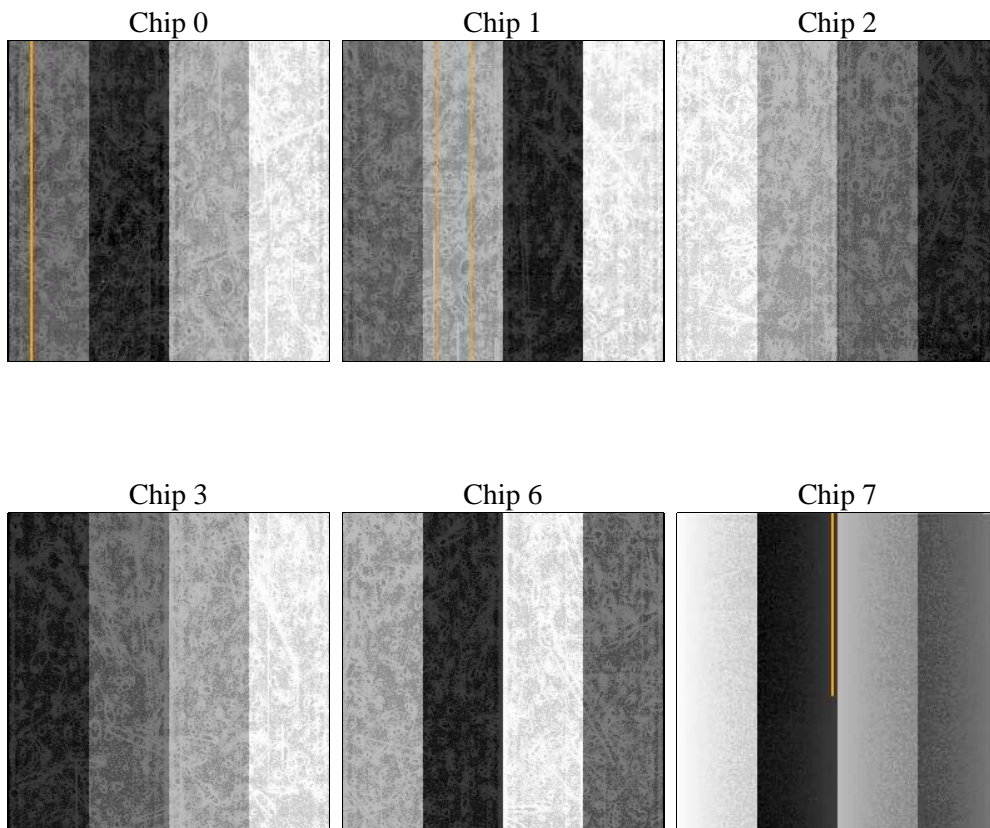
2 OBI

2.1 OBI

2.1.1 Images



2.1.2 Bias



2.1.3 Parameters

obi_num	0	Obi number	sched_exp_time	0.0	[s] Scheduled observation exposure time
ascdsver	8.4.3	Processing system revision	ontime	8287.6566488743	Sum of GTIs [s]
caldsver	4.4.7	 	ontime0	8287.615608871	Sum of GTIs [s]
date	2012-02-13T13:26:38	Date and time of file creation	ontime1	8287.5745688677	Sum of GTIs [s]
revision	2	Processing version of data	ontime2	8287.5335288644	Sum of GTIs [s]
			ontime3	8287.6976888776	Sum of GTIs [s]
			ontime6	8287.4924888611	Sum of GTIs [s]
			ontime7	8287.6566488743	Sum of GTIs [s]
			l1events	622482	Number of level 1 events

2.1.4 Events

	ccd 0	ccd 1	ccd 2	ccd 3	ccd 6	ccd 7		ccd 0	ccd 1	ccd 2	ccd 3	ccd 6	ccd 7
level 1 events	96070	98321	97320	99317	102574	128880	grade 0 events	25557	27473	25940	26170	26354	13358
rejected events	47825	47363	49274	50685	51839	53626		26%	27%	26%	26%	25%	10%
rejected %	49%	48%	50%	51%	50%	41%	grade 1 events	141	148	161	179	120	105
								0%	0%	0%	0%	0%	0%
							grade 2 events	8910	9282	8415	8656	9282	16148
								9%	9%	8%	8%	9%	12%
							grade 3 events	3324	3253	3301	3396	3318	6754
								3%	3%	3%	3%	3%	5%
							grade 4 events	3274	3251	3222	3393	3254	6843
								3%	3%	3%	3%	3%	5%
							grade 5 events	3166	3326	2978	3405	3404	8499
								3%	3%	3%	3%	3%	6%
							grade 6 events	7208	7721	7185	7040	8548	32185
								7%	7%	7%	7%	8%	24%
							grade 7 events	44490	43867	46118	47078	48294	44988
								46%	44%	47%	47%	47%	34%

2.2 Compared Parameters

Parameter	Planned	Actual	Parameter	Planned	Actual
Instrument	ACIS	ACIS	Obspar format version number	7	7
Detector	ACIS-012367	ACIS-012367	Obspar file type	PREDICTED	ACTUAL
Grating	NONE	NONE	Obspar update status	NONE	UPDATED
Data mode	FAINT	FAINT	Number of optional ACIS chips dropped	0	0
Observation mode	SECONDARY	SECONDARY	On-chip summing requested	N	N
[deg] Pointing RA	0	312.9972645600727	Subarray requested	NONE	NONE
[deg] Pointing Dec	0	-52.97133629002253	Alternating exposures requested	N	N
[deg] Pointing Roll	0.0	60.38092132069054	[s] Primary exposure time	3.2	3.2
[mm] SIM focus pos	-1.429586	-1.428180813131781			
[mm] SIM defocus	0.1037507710433287	0.1051558262725154			
[mm] SIM translation stage pos	250.455976	250.466033080201			
[mm] SIM translation stage offset	0	-0.01005468664627074			
[s] Observation start time (MET)	425403061.246859	425403060.22187			
Observation start date	2011-06-25T15:31:01	2011-06-25T15:31:00			
[s] Observation end time (MET)	425414588.397459	425414587.37247			
Observation end date	2011-06-25T18:43:08	2011-06-25T18:43:07			
Read mode	TIMED	TIMED			

2.3 Star Slots

2.4 FID Slots

A Summary

A.1 Status

V&V Scientist	Jen Lauer
V&V Date (YYYY-MM-DD)	2012.02.14
V&V Edition	1
V&V Disposition and Status	OK
V&V Charge Time	8.2876566488743

A.2 Comments