

V&V Reference Report

L2 ASCDS Version : 8.4.3

Observation 55285 - L2 Version 2
Chandra X-Ray Center

L2 Processing Date : Feb 18 2012

Contents

1	Front	2
2	OBI	3
2.1	OBI	3
2.1.1	Images	3
2.1.2	Bias	3
2.1.3	Parameters	4
2.1.4	Events	4
2.2	Compared Parameters	5
2.3	Star Slots	6
2.4	FID Slots	6
A	Summary	7
A.1	Status	7
A.2	Comments	7

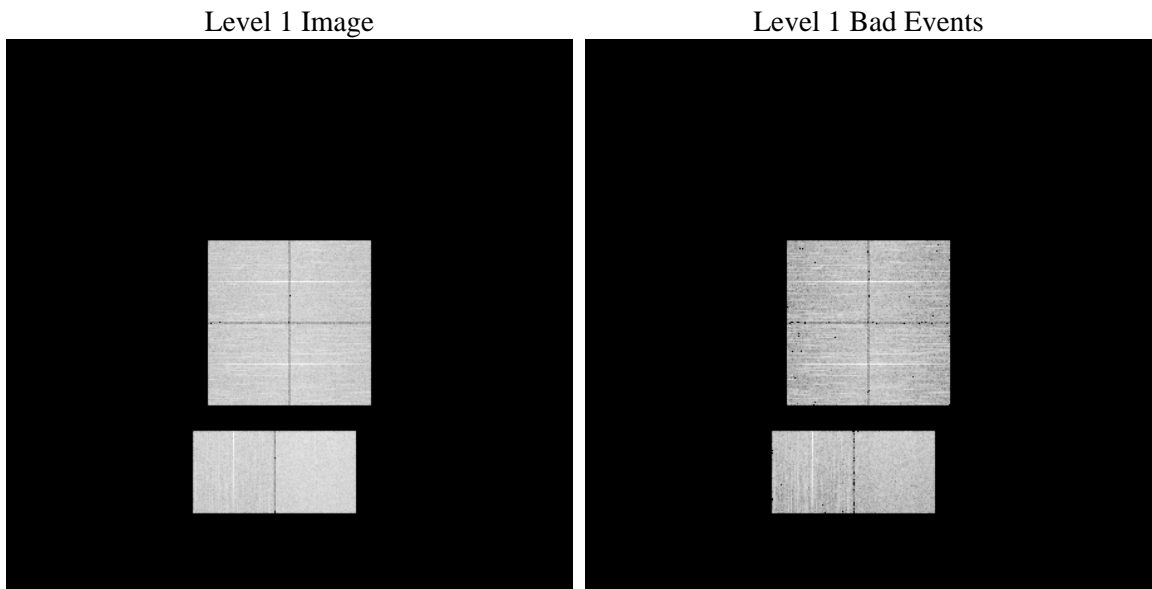
1 Front

seq_num	 	Sequence number
obs_id	55285	Observation id
title	ACIS-012367 diagnostics	Proposal title
observer	CHANDRA engineering request/realtime commanding	Principal investig
object	 	Source name
dtcycle	0	
cycle	P	events from which exps? Prim/Second/Both
ra_targ	0.0	Observer's specified target RA [deg]
dec_targ	0.0	Observer's specified target Dec [deg]
ra_nom	278.03567422164	Nominal RA [deg]
dec_nom	-40.009118960121	Nominal Dec [deg]
roll_nom	307.80976849369	Nominal Roll [deg]
revision	2	Processing version of data
ontime	8287.9999691844	Sum of GTIs [s]
livetime	8183.0523231401	Livetime [s]
ontime0	8287.9999691844	Sum of GTIs [s]
ontime1	8287.9999691844	Sum of GTIs [s]
ontime2	8287.9999691844	Sum of GTIs [s]
ontime3	8287.9999691844	Sum of GTIs [s]
ontime6	8287.9999691844	Sum of GTIs [s]
ontime7	8287.9999691844	Sum of GTIs [s]
l2events	301837	Number of level 2 events

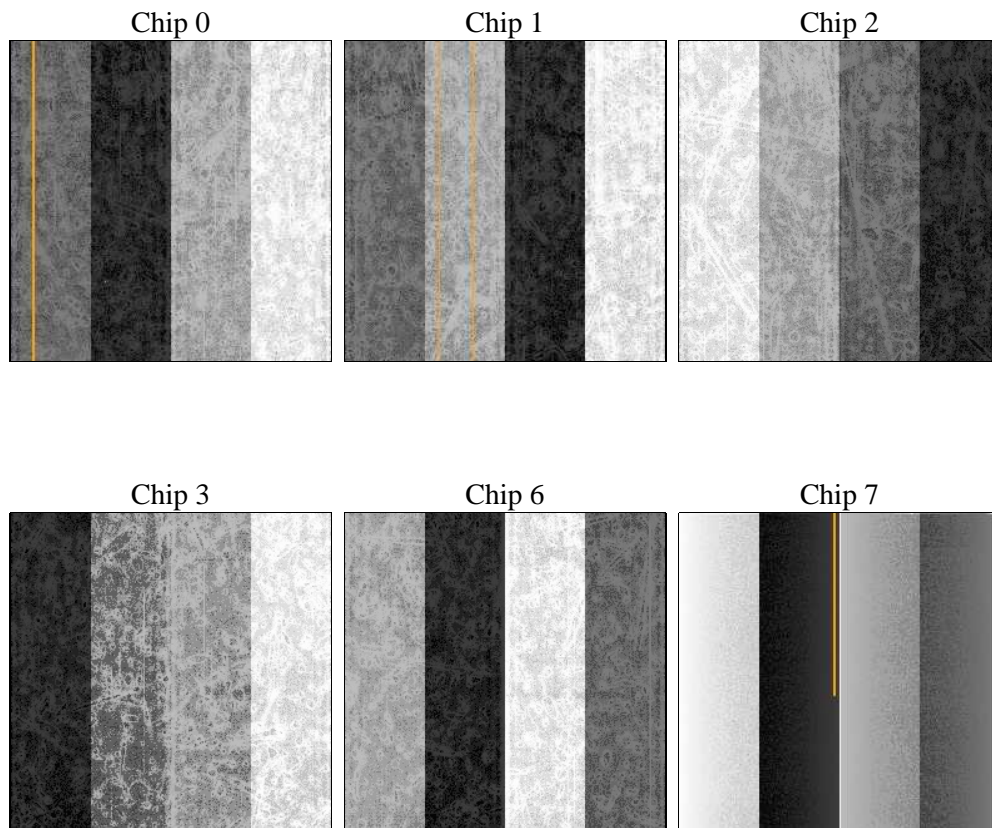
2 OBI

2.1 OBI

2.1.1 Images



2.1.2 Bias



2.1.3 Parameters

obi_num	0	Obi number	sched_exp_time	0.0	[s] Scheduled observation exposure time
ascdsver	8.4.3	Processing system revision	ontime	8287.9999691844	Sum of GTIs [s]
caldsver	4.4.8	 	ontime0	8287.9999691844	Sum of GTIs [s]
date	2012-02-18T07:19:12	Date and time of file creation	ontime1	8287.9999691844	Sum of GTIs [s]
revision	2	Processing version of data	ontime2	8287.9999691844	Sum of GTIs [s]
			ontime3	8287.9999691844	Sum of GTIs [s]
			ontime6	8287.9999691844	Sum of GTIs [s]
			ontime7	8287.9999691844	Sum of GTIs [s]
			l1events	639971	Number of level 1 events

2.1.4 Events

	ccd 0	ccd 1	ccd 2	ccd 3	ccd 6	ccd 7		ccd 0	ccd 1	ccd 2	ccd 3	ccd 6	ccd 7
level 1 events	97651	97205	101278	103919	106078	133840	grade 0 events	25061	24892	25776	25904	25861	13334
rejected events	49933	48745	53396	55887	55720	56995		25%	25%	25%	24%	24%	9%
rejected %	51%	50%	52%	53%	52%	42%	grade 1 events	150	130	172	148	139	128
								0%	0%	0%	0%	0%	0%
							grade 2 events	8767	9342	8468	8586	9239	16406
								8%	9%	8%	8%	8%	12%
							grade 3 events	3295	3248	3256	3238	3307	6791
								3%	3%	3%	3%	3%	5%
							grade 4 events	3203	3224	3349	3301	3273	6889
								3%	3%	3%	3%	3%	5%
							grade 5 events	3275	3461	3042	3712	3449	8912
								3%	3%	3%	3%	3%	6%
							grade 6 events	7412	7772	7049	7031	8692	33449
								7%	7%	6%	6%	8%	24%
							grade 7 events	46488	45136	50166	51999	52118	47931
								47%	46%	49%	50%	49%	35%

2.2 Compared Parameters

Parameter	Planned	Actual	Parameter	Planned	Actual
Instrument	ACIS	ACIS	Obspar format version number	7	7
Detector	ACIS-012367	ACIS-012367	Obspar file type	PREDICTED	ACTUAL
Grating	NONE	NONE	Obspar update status	NONE	UPDATED
Data mode	FAINT	FAINT	Number of optional ACIS chips dropped	0	0
Observation mode	SECONDARY	SECONDARY	On-chip summing requested	N	N
[deg] Pointing RA	0	278.0356742216435	Subarray requested	NONE	NONE
[deg] Pointing Dec	0	-40.00911896012058	Alternating exposures requested	N	N
[deg] Pointing Roll	0.0	307.8097684936874	[s] Primary exposure time	3.2	3.2
[mm] SIM focus pos	-1.429586	-1.428180813131781			
[mm] SIM defocus	0.1037507710433287	0.1051558262725154			
[mm] SIM translation stage pos	250.455976	250.466033080201			
[mm] SIM translation stage offset	0	-0.01005468664627074			
[s] Observation start time (MET)	427721967.695602	427721966.67064			
Observation start date	2011-07-22T11:39:28	2011-07-22T11:39:26			
[s] Observation end time (MET)	427730717.096058	427730716.0711			
Observation end date	2011-07-22T14:05:17	2011-07-22T14:05:16			
Read mode	TIMED	TIMED			

2.3 Star Slots

2.4 FID Slots

A Summary

A.1 Status

V&V Scientist	Jen Lauer
V&V Date (YYYY-MM-DD)	2012.02.21
V&V Edition	1
V&V Disposition and Status	OK
V&V Charge Time	8.2879999691844

A.2 Comments